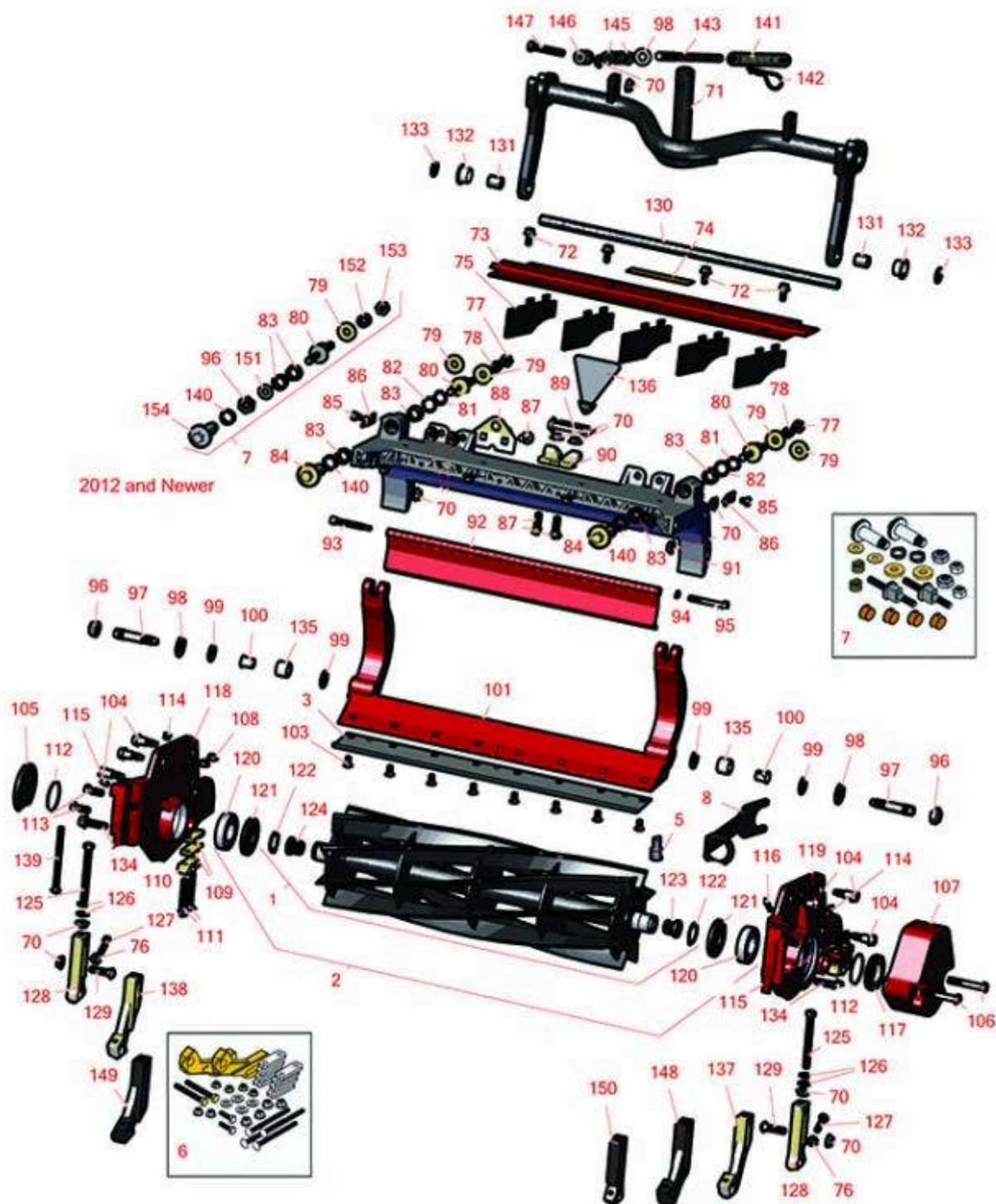




Replaces Toro Reelmaster 5510-D Parts

DPA Cutting Unit - Models 03681 & 03682

Reel & Bedknife



All original equipment manufacturers names and part numbers are used for identification purposes only, and we are in no way implying that our products are original equipment parts. Prices subject to change without notice.



Replaces Toro Reelmaster 5510-D Parts

DPA Cutting Unit - Models 03681 & 03682

Reel & Bedknife



Item No	R&R Part No.	OEM Part No.	Description	Qty Req	Order Quantity
---------	--------------	--------------	-------------	---------	----------------

R&R Reels, Lifetime Guaranteed

1	R127-2077	127-2077	Reel - 5 Blade Radial 22x7	1	
---	------------------	----------	----------------------------	---	--

Detail Description: R&R Reel blades are manufactured from high carbon-boron alloy steel and then hardened to RC46-49 to match the temper of our bedknives and original equipment bedknives. All R&R Reels are cylindrically ground on bearing surfaces and then relief ground. Reels are then precision computer balanced for extended bearing and reel life. R&R Products Reels are guaranteed against defects in material and workmanship for the life of the reel under normal use.:

1	R133-8209		Reel - 5 Blade Razor Series Radial Low Drag 22x7	1	
---	------------------	--	---	---	--

Detail Description: R&R Razor Reels are manufactured from a special high alloy steel and then hardened to RC48-51 to match the temper of our Razor bedknives and original equipment premium series bedknives. All R&R Reels are cylindrically ground on bearing surfaces, relief ground and precision computer balanced for extended bearing and reel life. R&R Products Reels are guaranteed against defects in material and workmanship for the life of the reel under normal use. You can expect up to double the life from Razor reels over standard reels.:

1	R107-3264	107-3264	Reel - 8 Blade 22x7	1	
---	------------------	----------	---------------------	---	--

Detail Description: R&R Reel blades are manufactured from high carbon-boron alloy steel and then hardened to RC46-49 to match the temper of our bedknives and original equipment bedknives. All R&R Reels are cylindrically ground on bearing surfaces and then relief ground. Reels are then precision computer balanced for extended bearing and reel life. R&R Products Reels are guaranteed against defects in material and workmanship for the life of the reel under normal use.:

1	R108-9073	108-9073	Reel - 8 Blade 22x7	1	
---	------------------	----------	---------------------	---	--

Detail Description: R&R Reel blades are manufactured from high carbon-boron alloy steel and then hardened to RC46-49 to match the temper of our bedknives and original equipment bedknives. All R&R Reels are cylindrically ground on bearing surfaces and then relief ground. Reels are then precision computer balanced for extended bearing and reel life. R&R Products Reels are guaranteed against defects in material and workmanship for the life of the reel under normal use.:

1	R127-2084	127-2084	Reel - 8 Blade Radial Low Drag 22x7	1	
---	------------------	----------	--	---	--

All original equipment manufacturers names and part numbers are used for identification purposes only, and we are in no way implying that our products are original equipment parts. Prices subject to change without notice.



Replaces Toro Reelmaster 5510-D Parts

DPA Cutting Unit - Models 03681 & 03682

Reel & Bedknife



Item No	R&R Part No.	OEM Part No.	Description	Qty Req	Order Quantity
---------	--------------	--------------	-------------	---------	----------------

Detail Description: R&R Reel blades are manufactured from high carbon-boron alloy steel and then hardened to RC46-49 to match the temper of our bedknives and original equipment bedknives. All R&R Reels are cylindrically ground on bearing surfaces and then relief ground. Reels are then precision computer balanced for extended bearing and reel life. R&R Products Reels are guaranteed against defects in material and workmanship for the life of the reel under normal use.:

1	R117-0980	117-0980	Reel - 11 Blade 22x7	1
---	------------------	----------	----------------------	---

Detail Description: R&R Reel blades are manufactured from high carbon-boron alloy steel and then hardened to RC46-49 to match the temper of our bedknives and original equipment bedknives. All R&R Reels are cylindrically ground on bearing surfaces and then relief ground. Reels are then precision computer balanced for extended bearing and reel life. R&R Products Reels are guaranteed against defects in material and workmanship for the life of the reel under normal use.:

1	R108-9074	108-9074	Reel - 11 Blade 22x7	1
---	------------------	----------	----------------------	---

Detail Description: R&R Reel blades are manufactured from high carbon-boron alloy steel and then hardened to RC46-49 to match the temper of our bedknives and original equipment bedknives. All R&R Reels are cylindrically ground on bearing surfaces and then relief ground. Reels are then precision computer balanced for extended bearing and reel life. R&R Products Reels are guaranteed against defects in material and workmanship for the life of the reel under normal use.:

1	R127-2085	127-2085	Reel - 11 Blade Radial Low Drag 22x7	1
---	------------------	----------	--------------------------------------	---

Detail Description: R&R Reel blades are manufactured from high carbon-boron alloy steel and then hardened to RC46-49 to match the temper of our bedknives and original equipment bedknives. All R&R Reels are cylindrically ground on bearing surfaces and then relief ground. Reels are then precision computer balanced for extended bearing and reel life. R&R Products Reels are guaranteed against defects in material and workmanship for the life of the reel under normal use.:

1	R127-0294	127-0294	Reel - 11 Blade Razor Series Forward Swept Low Drag 22x7	1
---	------------------	----------	--	---

Detail Description: R&R Razor Reels are manufactured from a special high alloy steel and then hardened to RC48-51 to match the temper of our Razor bedknives and original equipment premium series bedknives. All R&R Reels are cylindrically ground on bearing surfaces, relief ground and precision computer balanced for extended bearing and reel life. R&R Products Reels are guaranteed against defects in material and workmanship for the life of the reel under normal use. You can expect up to double the life from Razor reels over standard reels.:

All original equipment manufacturers names and part numbers are used for identification purposes only, and we are in no way implying that our products are original equipment parts. Prices subject to change without notice.



Replaces Toro Reelmaster 5510-D Parts

DPA Cutting Unit - Models 03681 & 03682
Reel & Bedknife



Item No	R&R Part No.	OEM Part No.	Description	Qty Req	Order Quantity
2	R137-8437	137-8437	Reel - 5 Blade Razor Series Radial Low Drag (RR) w/Bearings and Seals 22x7	1	
<i>Detail Description: R&R Razor Reels are manufactured from a special high alloy steel and then hardened to RC48-51 to match the temper of our Razor bedknives and original equipment premium series bedknives. All R&R Reels are cylindrically ground on bearing surfaces, relief ground and precision computer balanced for extended bearing and reel life. R&R Products Reels are guaranteed against defects in material and workmanship for the life of the reel under normal use. You can expect up to double the life from Razor reels over standard reels.:</i>					
2	R137-8432	137-8432	Reel - 8 Blade Radial w/Bearings and Seals 22x7	1	
<i>Detail Description: R&R Reel blades are expertly crafted from premium high carbon-boron alloy steel, heat-treated to perfectly complement both R&R and OEM bedknives. Each reel undergoes precision cylindrical grinding on bearing surfaces, followed by relief grinding for optimal performance. Advanced computer balancing ensures extended reel and bearing life. Backed by our lifetime guarantee against defects in materials and craftsmanship under normal use, R&R Reels deliver unmatched durability and cutting precision you can trust.:</i>					
2	R137-8438	137-8438	Reel - 8 Blade Razor Series Radial Low Drag (RR) w/Bearings and Seals 22x7	1	
<i>Detail Description: R&R Razor Reels are manufactured from a special high alloy steel and then hardened to RC48-51 to match the temper of our Razor bedknives and original equipment premium series bedknives. All R&R Reels are cylindrically ground on bearing surfaces, relief ground and precision computer balanced for extended bearing and reel life. R&R Products Reels are guaranteed against defects in material and workmanship for the life of the reel under normal use. You can expect up to double the life from Razor reels over standard reels.:</i>					
2	R133-8211	133-8211	Reel - 8 Blade Razor Series Radial w/Bearings and Seals 22x7	1	
<i>Detail Description: R&R Razor Reels are manufactured from a special high alloy steel and then hardened to RC48-51 to match the temper of our Razor bedknives and original equipment premium series bedknives. All R&R Reels are cylindrically ground on bearing surfaces, relief ground and precision computer balanced for extended bearing and reel life. R&R Products Reels are guaranteed against defects in material and workmanship for the life of the reel under normal use. You can expect up to double the life from Razor reels over standard reels.:</i>					
2	R137-8433	137-8433	Reel - 11 Blade Radial w/Bearings and Seals 22x7	1	

All original equipment manufacturers names and part numbers are used for identification purposes only, and we are in no way implying that our products are original equipment parts. Prices subject to change without notice.



Replaces Toro Reelmaster 5510-D Parts

DPA Cutting Unit - Models 03681 & 03682
Reel & Bedknife



Item No	R&R Part No.	OEM Part No.	Description	Qty Req	Order Quantity
---------	--------------	--------------	-------------	---------	----------------

Detail Description: R&R Reel blades are expertly crafted from premium high carbon-boron alloy steel, heat-treated to perfectly complement both R&R and OEM bedknives. Each reel undergoes precision cylindrical grinding on bearing surfaces, followed by relief grinding for optimal performance. Advanced computer balancing ensures extended reel and bearing life. Backed by our lifetime guarantee against defects in materials and craftsmanship under normal use, R&R Reels deliver unmatched durability and cutting precision you can trust.:

2	R137-8439	137-8439	Reel - 11 Blade Razor Series Forward Swept Low Drag (Fsr) w/Bearings and Seals 22x7	1	
---	------------------	----------	---	---	--

Detail Description: R&R Razor Reels are manufactured from a special high alloy steel and then hardened to RC48-51 to match the temper of our Razor bedknives and original equipment premium series bedknives. All R&R Reels are cylindrically ground on bearing surfaces, relief ground and precision computer balanced for extended bearing and reel life. R&R Products Reels are guaranteed against defects in material and workmanship for the life of the reel under normal use. You can expect up to double the life from Razor reels over standard reels.:

R&R Bedknives, Lifetime Guaranteed

3	R108-9096	108-9096	Bedknife - Standard	1	
---	------------------	----------	---------------------	---	--

Detail Description: R&R Bedknives are manufactured from high carbon-boron alloy steel and then hardened to RC46-49 to match the temper of our reel blades and original equipment reels. Bedknives are surface ground on the top and front edge and straightened three times before being packaged with oil for rust prevention. All R&R Bedknives now have an increased front edge grind for added life. All R&R Bedknives are guaranteed against defects in material and workmanship under normal use for the life of the part.:

3	R110-4084	110-4084	Bedknife - Low Cut	1	
---	------------------	----------	--------------------	---	--

Detail Description: R&R Bedknives are manufactured from high carbon-boron alloy steel and then hardened to RC46-49 to match the temper of our reel blades and original equipment reels. Bedknives are surface ground on the top and front edge and straightened three times before being packaged with oil for rust prevention. All R&R Bedknives now have an increased front edge grind for added life. All R&R Bedknives are guaranteed against defects in material and workmanship under normal use for the life of the part.:

3	R120-1640	120-1640	Bedknife - Low Cut Extended	1	
---	------------------	----------	-----------------------------	---	--

Detail Description: R&R Bedknives are manufactured from high carbon-boron alloy steel and then hardened to RC46-49 to match the temper of our reel blades and original equipment reels. Bedknives are surface ground on the top and front edge and straightened three times before being packaged with oil for rust prevention. All R&R Bedknives now have an increased front edge grind for added life. All R&R Bedknives are guaranteed against defects in material and workmanship under normal use for the life of the part.:

All original equipment manufacturers names and part numbers are used for identification purposes only, and we are in no way implying that our products are original equipment parts. Prices subject to change without notice.



Replaces Toro Reelmaster 5510-D Parts

DPA Cutting Unit - Models 03681 & 03682
Reel & Bedknife



Item No	R&R Part No.	OEM Part No.	Description	Qty Req	Order Quantity
---------	--------------	--------------	-------------	---------	----------------

3	R110-4074	110-4074	Bedknife - High Cut	1	
---	------------------	----------	---------------------	---	--

Detail Description: R&R Bedknives are manufactured from high carbon-boron alloy steel and then hardened to RC46-49 to match the temper of our reel blades and original equipment reels. Bedknives are surface ground on the top and front edge and straightened three times before being packaged with oil for rust prevention. All R&R Bedknives now have an increased front edge grind for added life. All R&R Bedknives are guaranteed against defects in material and workmanship under normal use for the life of the part.:

R&R Razor Tool Steel Bedknives, Lifetime Guaranteed

3	R108-9095	108-9095, 137-0833	Bedknife - Razor Tool Steel - 22 High Cut	1	
---	------------------	-----------------------	--	---	--

Detail Description: R&R Razor bedknives are manufactured from premium alloy tool steel steel and then hardened to RC48-51 to match the temper of our Razor reel blades and original equipment premium series reels. Bedknives are surface ground on the top and front edge and specially packaged for rust prevention. All R&R Bedknives now have an increased front edge grind for added life. All R&R Bedknives are guaranteed against defects in material and workmanship under normal use for the life of the part. You can expect up to double the life over standard bedknives.:

3	R137-0832	125-2771, 127-7132, 137-0832	Bedknife - Razor Tool Steel - 3/8 x 22 Lowcut	1	
---	------------------	------------------------------------	--	---	--

3	R119-4280	119-4280	Bedknife - Razor Tool Steel - 22 x 3/8 Extended	1	
---	------------------	----------	--	---	--

Detail Description: R&R Razor bedknives are manufactured from premium alloy tool steel steel and then hardened to RC48-51 to match the temper of our Razor reel blades and original equipment premium series reels. Bedknives are surface ground on the top and front edge and specially packaged for rust prevention. All R&R Bedknives now have an increased front edge grind for added life. All R&R Bedknives are guaranteed against defects in material and workmanship under normal use for the life of the part. You can expect up to double the life over standard bedknives.:

Overhaul Kits & Service Tools

5	R51-0880	51-0880	Bedknife Screw Driver Tool	0	
---	-----------------	---------	----------------------------	---	--

Detail Description: Easily install and remove bed knife screws with the help of a ratchet with 3/8" drive. Tool manufactured with hardened alloy steel.:

6	R110-9600	110-9600	High HOC Kit	1	
---	------------------	----------	--------------	---	--

All original equipment manufacturers names and part numbers are used for identification purposes only, and we are in no way implying that our products are original equipment parts. Prices subject to change without notice.



Replaces Toro Reelmaster 5510-D Parts

DPA Cutting Unit - Models 03681 & 03682

Reel & Bedknife



Item No	R&R Part No.	OEM Part No.	Description	Qty Req	Order Quantity
---------	--------------	--------------	-------------	---------	----------------

Detail Description: Includes 1 ea.: R120-0404, R120-0405 & 2 ea: R112-7451, R322-16, R445722 & 4 ea.: R106-9758, R104-8300, R453011, R104-8301 & 8 ea: R106-3925:

7	R120-7230	120-7230	Overhaul Kit - Fits DPA Units	1
---	------------------	----------	-------------------------------	---

Detail Description: Incl 2 ea.: R108-0015, R115-7039, R119-4155, R120-5116, R120-5118, R120-5120, R3296-33, R3296-48 & 4 ea: R106-5344:

8	R117-0975	117-0975	Tool- Reel Bearing Installation	1
---	------------------	----------	---------------------------------	---

Other Parts Available

70	R32128-43	30-8990, 32128-43, 3290-357	Nut - Flanged Whiz - 3/8-16	7
----	------------------	-----------------------------------	-----------------------------	---

70	R32128-40	32128-40	Nut- 3/8-16 Hx Flange	7
----	------------------	----------	-----------------------	---

71	R107-7433	107-7433	Carrier Frame Assy	1
----	------------------	----------	--------------------	---

72	R3234-5	3234-5, 62-3310	Bolt - 5/16-18x3/4 Hx Ser Was HD	4
----	----------------	--------------------	----------------------------------	---

73	R107-2996	107-2996	Grass Shield - Front	1
----	------------------	----------	----------------------	---

74	R93-6688	93-6688	Decal - Warning	1
----	-----------------	---------	-----------------	---

75	R110-1706	110-1706	Deflector	5
----	------------------	----------	-----------	---

76	R445722	30-8980, 32128-2, 32128-20, 32128-20	Nut - Serrated Washer	4
----	----------------	---	-----------------------	---

77	R33025-00	32025-00, 33025-00	Locknut - 10mm x 1.5 Jam	2
----	------------------	-----------------------	--------------------------	---

78	R99-3755	99-3755	Spring - Bed Bar Adjusting	2
----	-----------------	---------	----------------------------	---

79	R99-2098	99-2098	Washer - Bed Bar Adjuster	2
----	-----------------	---------	---------------------------	---

Tech Note: Up to 2012:

79	R119-4155	119-4155	Washer - Hardened	2
----	------------------	----------	-------------------	---

All original equipment manufacturers names and part numbers are used for identification purposes only, and we are in no way implying that our products are original equipment parts. Prices subject to change without notice.



Replaces Toro Reelmaster 5510-D Parts

DPA Cutting Unit - Models 03681 & 03682

Reel & Bedknife



Item No	R&R Part No.	OEM Part No.	Description	Qty Req	Order Quantity
<i>Tech Note: 2012 & Newer:</i>					
80	R99-2096	99-2096	Screw - Bed Bar Adjustment - M10 Thrd 1 End	2	
<i>Tech Note: Up to 2012:</i>					
80	R115-7039	115-7039	Screw - Adjuster - Bedbar	2	
<i>Tech Note: 2012 & Newer:</i>					
81	R32120-93	32120-93	Snap Ring - HD	2	
82	R106-5335	106-5335	Wave Washer - Reel Adjusting	2	
83	R106-5344	106-5344	Bushing - Flanged and Keyed	4	
84	R106-5363	106-5363	Shaft - Adjusting - Bed Bar - Stainless	2	
<i>Tech Note: Up to 2012:</i>					
85	R114-9396	114-9396, 119-4067	Bolt - Hex HD 5/16-18 x 3/8	2	
85	R322-26	322-26	Bolt - Hx HD 5/16-18 x 3/8	2	
86	R99-2097	99-2097	Detent - Bed Bar Adjuster	2	
87	R3231-25	01-173-0610, 30-9970, 3231-25, 3231-3, 900064P	Bolt - Carriage 3/8-16 x 1-1/4	4	
88	R110-4069	110-4069	Bracket	1	
89	R107-7400	107-7400	Pin - Lynch	1	
90	R110-4058	110-4058	Bracket - Chain	1	
91	R107-3258	107-3258	Frame	1	
92	R107-7779-01	107-7779-01	Grass Shield Assy - Rear	1	

All original equipment manufacturers names and part numbers are used for identification purposes only, and we are in no way implying that our products are original equipment parts. Prices subject to change without notice.



Replaces Toro Reelmaster 5510-D Parts

DPA Cutting Unit - Models 03681 & 03682

Reel & Bedknife



Item No	R&R Part No.	OEM Part No.	Description	Qty Req	Order Quantity
93	R107-7773	107-7773	Bolt - Soc HD Cap 5/16-18 x 2-1/2	1	
94	R3256-74	3256-74	Washer - Flat	1	
95	R322-14	01-150-0830, 01-178-0524, 30-8900, 322-14	Bolt - Hex HD 5/16-18 x 3 GR5	1	
96	R3296-33	3296-33	Locknut - 5/8-18 ESNA Jam	2	
97	R106-9623	106-9623	Bolt - Bedbar	2	
98	R453017	01-166-0050, 01-166-0240, 01-166-0800, 24-13-AD, 24-14-AD, 32-8110, 3256-26, 3256-6, 453017, 69-8980, 87-7270	Washer - Flat 1/2	2	
98	R455012	3256-26, 41-8440	Washer - Flat 1/2 x 3/4	1	
98	R87-7270-01	87-7270	Washer - Flat 1/2	1	
99	R61-1950	61-1950	Washer - Nylon - Bed Bar	4	
100	R56-9520	56-9520	Bushing - Nyliner	2	
101	R107-3273-01	107-3273-01	Bed Bar - Fits OEM Units Only	1	
101	R150904		Bed Bar - Fits R&R Units Only	1	
103	R150476	3-3816, 3-6462, 57-4910	Screw - Bedknife 5/16-18 x 5/8	8	
104	R107-2979	107-2979	Bolt - Shoulder	6	

All original equipment manufacturers names and part numbers are used for identification purposes only, and we are in no way implying that our products are original equipment parts. Prices subject to change without notice.



Replaces Toro Reelmaster 5510-D Parts

DPA Cutting Unit - Models 03681 & 03682

Reel & Bedknife



Item No	R&R Part No.	OEM Part No.	Description	Qty Req	Order Quantity
105	R94-2703	94-2703	Plug - Plastic Spindle Housing	1	
106	R101526	01-150-0970, 01-178-0620, 20-53-AGD, 321-11, 3224-8, 323-11, 323-12, 323-31, 323-4, 323-47	Bolt - Hex HD 3/8-16 x 2-1/2 GR5	2	
107	R108-4269-01	108-4269-01	Weight	1	
108	R104-8300	104-8300, 104-8300 , 119-4041	Locknut - 5/16-18 Flanged Y/Zinc	4	
109	R106-3925	106-3925	Shim - 1/4 - Rear Roller HOC	4	
110	R106-3924	106-3924	Bracket - Rear Roller	2	
111	RP17609-2	106-9758, 3230-7	Bolt - Carriage 5/16-18 x 1-1/2	4	
112	R112-6967	112-6967	O-Ring	2	
113	R323-6	01-150-0010, 01-178-0608, 20-47-AD, 20-47-AGD, 3224-2, 323-6, 49-3510, 908034P, 908332	Bolt - Hex HD 3/8-16 x 1 GR5 YZ	2	
114	R170714	302-34, 302-39, 62-3520	Fitting - Pressure Relief	2	

All original equipment manufacturers names and part numbers are used for identification purposes only, and we are in no way implying that our products are original equipment parts. Prices subject to change without notice.



Replaces Toro Reelmaster 5510-D Parts

DPA Cutting Unit - Models 03681 & 03682

Reel & Bedknife



Item No	R&R Part No.	OEM Part No.	Description	Qty Req	Order Quantity
115	R302-5	21-6010, 302-11, 302-37, 302-47, 302-5, 302-57, 302-58, 302-6, 31-0300, 32-9660, 60-0800, 62-3880, 92-4181	Fitting - Grease	2	
116	R107-7447	107-7447	Set Screw - 1/4 x 1-1/4 Sq HD	1	
117	R107-2954	107-2954	Nut - Bearing Adjuster	1	
118	R108-9083	108-9083	Side Plate - RH - Fits OEM Units Only	1	
118	R150903		Side Plate - RH - Fits R&R Units Only	1	
119	R108-9082	108-9082	Side Plate - LH - Fits OEM Units Only	1	
119	R150902		Side Plate - LH - Fits R&R Units Only	1	
120	R93-2489	93-2489	Bearing - Reel	2	
121	R107-4028	105-6757, 107-4028	Seal - Grease	2	
122	R92-2601	92-2601	Snap Ring	2	
123	R107-3276	107-3276	Insert - Threaded - LH - 9 Tooth	1	
124	R107-3275	107-3275	Insert - Threaded - RH - 9 Tooth	1	
125	R107-4026	107-4026	Bolt - Hex Tap 3/8-16 x 3-3/4	2	

All original equipment manufacturers names and part numbers are used for identification purposes only, and we are in no way implying that our products are original equipment parts. Prices subject to change without notice.



Replaces Toro Reelmaster 5510-D Parts

DPA Cutting Unit - Models 03681 & 03682

Reel & Bedknife



Item No	R&R Part No.	OEM Part No.	Description	Qty Req	Order Quantity
126	R453011	01-166-0100, 01-166-0120, 01-166-0270, 01-166-0500, 01-166-0600, 01-166-0620, 132-4593, 2356-3, 237-12, 24-10-AD, 24-11-AD, 24-11-BD, 24-12-AD, 24-12-BD, 30-9310, 32-8190, 3256-24, 3256-3, 3256-36, 3256-4, 453011, 47-9950, 48-9220, 513458, 7-0052	Washer - Flat 3/8 SAE Y/Zinc	4	
127	R322-16	322-16, Apr-00	Bolt - Hex HD 5/16-18 x 1-1/8	2	
128	R107-2952	107-2952	Bracket - Front Roller	2	
129	R3231-4	01-157-0440, 01-173-0612, 3231-4	Bolt - Carriage 3/8-16 x 1-1/2	2	
130	R108-4284	108-4284	Shaft - Support	1	
131	R108-4279	108-4279	Spacer - Frame	2	
132	R93-2877	93-2877	Bushing - Flanged	2	
133	R67-9410	67-9410	Washer - Clevis Pin	1	
134	R3234-19	3234-19	Bolt - Hex Washer 3/8-16x1-3/4	2	

All original equipment manufacturers names and part numbers are used for identification purposes only, and we are in no way implying that our products are original equipment parts. Prices subject to change without notice.



Replaces Toro Reelmaster 5510-D Parts

DPA Cutting Unit - Models 03681 & 03682
Reel & Bedknife



Item No	R&R Part No.	OEM Part No.	Description	Qty Req	Order Quantity
135	R106-9618	106-9618	Bushing - Rubber	2	
136	R110-4088-03	110-4088-03, 119-8010-03	Kickstand	1	
137	R108-4213	108-4213	Bracket- HOC - LH - Groomer	1	
138	R108-4214	108-4214	Bracket-HOC - RH - Groomer	1	
139	R106-9758		Bolt - Carriage 5/16x4	4	
140	R120-5116	120-5116	Washer - Wave	2	
<i>Tech Note: 2012 & Newer:</i>					
141	R110-4079	110-4079	Spring	1	
142	R92-2762	92-2762	Pin - Snap	1	
143	R115-2007	107-7437, 115-2007	Rod - Spring	1	
145	R443818	01-191-0813, 3218-18, 3218-5	Nut - 1/2-13 Hex Jam Zinc	3	
146	R99-8662	99-8662	Tube - Spring	1	
147	R104-3396	104-3396	Bolt - Hex HD 3/8-16 x 2-1/4	1	
148	R120-0404	120-0404	Bracket- High HOC - LH	1	
<i>Detail Description: Fits 2011 & Newer:</i>					
149	R120-0405	120-0405	Bracket - High HOC - RH	1	
<i>Detail Description: Fits 2011 & Newer:</i>					
150	R125-2796	125-2796	Bracket- Front HOC	2	
<i>Detail Description: Fits 2013 & Newer:</i>					
151	R108-0015	108-0015	Washer - Flat	2	

All original equipment manufacturers names and part numbers are used for identification purposes only, and we are in no way implying that our products are original equipment parts. Prices subject to change without notice.



Replaces Toro Reelmaster 5510-D Parts

DPA Cutting Unit - Models 03681 & 03682

Reel & Bedknife



Item No	R&R Part No.	OEM Part No.	Description	Qty Req	Order Quantity
152	R120-5120	120-5120	Spring - Compression	2	
153	R3296-48	119-4039, 32146-7, 3296-34, 3296-48	Locknut - 7/16-14 ESNA	2	
154	R120-5118	120-5118	Shaft - Adjuster	2	
<i>Detail Description: 2012 & Newer:</i>					

All original equipment manufacturers names and part numbers are used for identification purposes only, and we are in no way implying that our products are original equipment parts. Prices subject to change without notice.