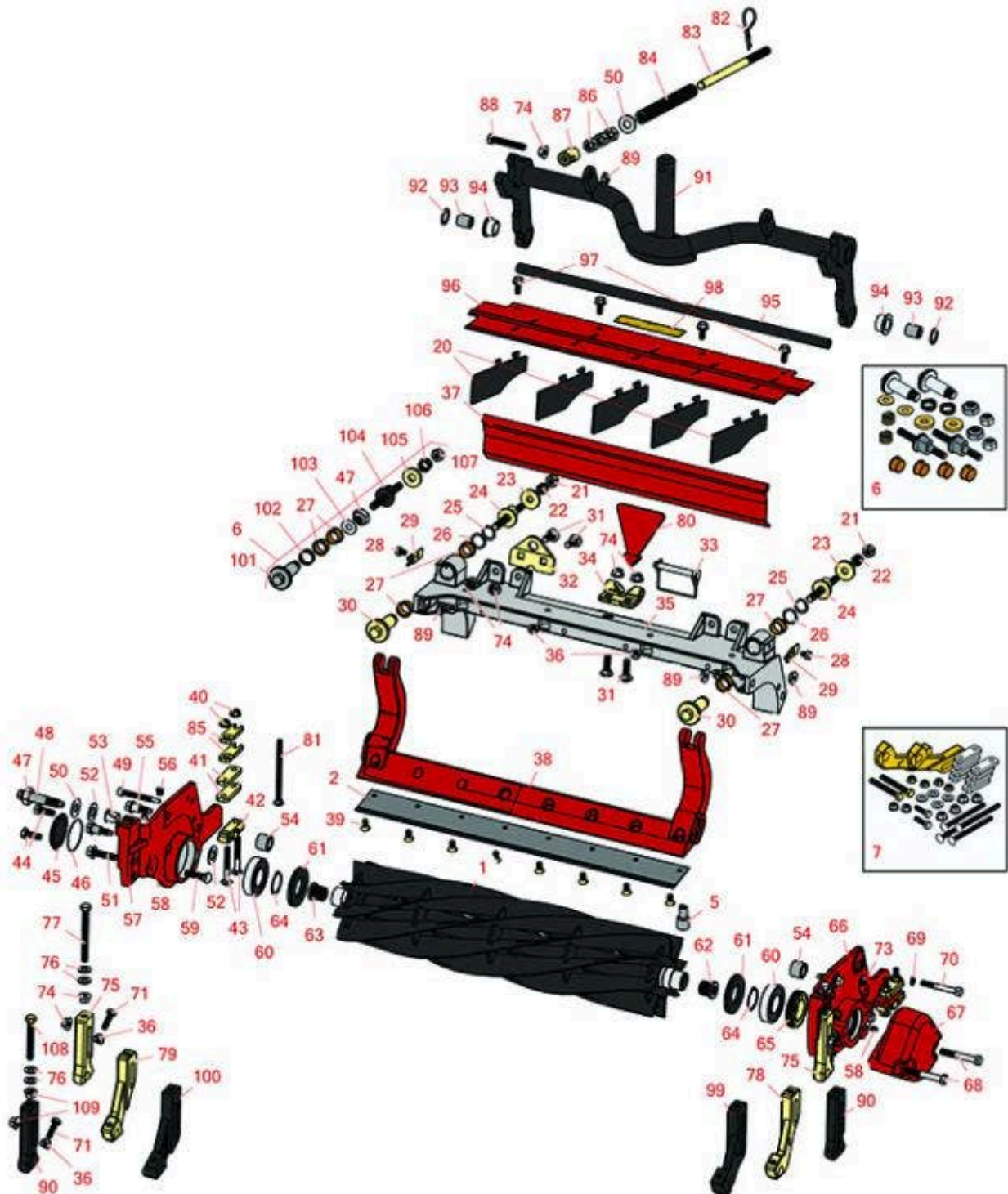




Replaces Toro Reelmaster 5410G Parts

DPA Cutting Unit with 5" Reel - Model 03694 & 03695
Reel & Bedknife



All original equipment manufacturers names and part numbers are used for identification purposes only, and we are in no way implying that our products are original equipment parts. Prices subject to change without notice.



Replaces Toro Reelmaster 5410G Parts

DPA Cutting Unit with 5" Reel - Model 03694 & 03695
Reel & Bedknife



Item No	R&R Part No.	OEM Part No.	Description	Qty Req	Order Quantity
R&R Reels, Lifetime Guaranteed					
1	R108-9070	108-9070	Reel - 5 Blade 22x5	1	
1	R127-2070	127-2070	Reel - 5 Blade Radial 22x5	1	
1	R137-8421	137-8421	Reel - 5 Blade Razor Series w/Bearings and Seals 22x5	1	
1	R108-9071	108-9071	Reel - 8 Blade 22x5	1	
1	R127-2065	127-2065	Reel - 8 Blade Radial 22x5	1	
1	R133-8201	133-8201	Reel - 8 Blade Razor Series Radial 22x5	1	
1	R137-8422	137-8422	Reel - 8 Blade Razor Series Radial w/Bearings and Seals 22x5	1	
1	R137-8417	137-8417	Reel - 11 Blade w/Bearings and Seals 22x5	1	
1	R127-2066	117-3793, 127-2066	Reel - 11 Blade Radial 22x5	1	
1	R133-8203	133-8203	Reel - 11 Blade Razor Series Forward Swept 22x5	1	
1	R137-8423	137-8423	Reel - 11 Blade Razor Series Forward Swept w/Bearings and Seals 22x5	1	
R&R Bedknives, Lifetime Guaranteed					
2	R110-4084	110-4084	Bedknife - Low Cut	1	
2	R108-9096	108-9096	Bedknife - Standard	1	
2	R110-4074	110-4074	Bedknife - High Cut	1	
2	R120-1640	120-1640	Bedknife - Low Cut Extended	1	
R&R Razor Tool Steel Bedknives, Lifetime Guaranteed					

All original equipment manufacturers names and part numbers are used for identification purposes only, and we are in no way implying that our products are original equipment parts. Prices subject to change without notice.



Replaces Toro Reelmaster 5410G Parts

DPA Cutting Unit with 5" Reel - Model 03694 & 03695
Reel & Bedknife



Item No	R&R Part No.	OEM Part No.	Description	Qty Req	Order Quantity
2	R108-9095	108-9095, 137-0833	Bedknife - Razor Tool Steel - 22 High Cut	1	
2	R119-4280	119-4280	Bedknife - Razor Tool Steel - 22 x 3/8 Extended	1	

Overhaul Kits and Service Tools

5	R51-0880	51-0880	Bedknife Screw Driver Tool	0	
6	R120-7230	120-7230	Overhaul Kit - Fits DPA Units	0	

Tech Note: Incl 2 ea.: R108-0015, R115-7039, R119-4155, R120-5116, R120-5118, R120-5120, R3296-33, R3296-48 & 4 ea: R106-5344:

7	R110-9600	110-9600	High HOC Kit	1	
---	------------------	----------	--------------	---	--

Tech Note: Includes 1 ea.: R120-0404, R120-0405 & 2 ea: R112-7451, R322-16, R445722 & 4 ea.: R106-9758, R104-8300, R453011, R104-8301 & 8 ea: R106-3925:

Other Parts Available

20	R110-1706	110-1706	Deflector	5	
21	R33025-00	32025-00, 33025-00	Locknut - 10mm x 1.5 Jam	2	
22	R99-3755	99-3755	Spring - Bed Bar Adjusting	2	
23	R99-2098	99-2098	Washer - Bed Bar Adjuster	2	
24	R99-2096	99-2096	Screw - Bed Bar Adjustment - M10 Thrd 1 End	2	
25	R32120-93	32120-93	Snap Ring - HD	2	
26	R106-5335	106-5335	Wave Washer - Reel Adjusting	2	
27	R106-5344	106-5344	Bushing - Flanged and Keyed	4	
28	R114-9396	114-9396, 119-4067	Bolt - Hex HD 5/16-18 x 3/8	2	
29	R99-2097	99-2097	Detent - Bed Bar Adjuster	2	

All original equipment manufacturers names and part numbers are used for identification purposes only, and we are in no way implying that our products are original equipment parts. Prices subject to change without notice.



Replaces Toro Reelmaster 5410G Parts

DPA Cutting Unit with 5" Reel - Model 03694 & 03695
Reel & Bedknife



Item No	R&R Part No.	OEM Part No.	Description	Qty Req	Order Quantity
30	R106-5363	106-5363	Shaft - Adjusting - Bed Bar - Stainless	2	
31	R3231-25	01-173-0610, 30-9970, 3231-25, 3231-3, 900064P	Bolt - Carriage 3/8-16 x 1-1/4	4	
32	R110-4069	110-4069	Bracket	1	
33	R107-7400	107-7400	Pin - Lynch	1	
34	R110-4058	110-4058	Bracket - Chain	1	
35	R107-2951	107-2951	Frame	1	
36	R445722	30-8980, 32128-2, 32128-20, 32128-20 , 445722	Nut - Serrated Washer	4	
37	R107-7777-01	107-7777-01	Grass Shield Assy - Rear	1	
38	R105-8095-01	105-8095-01	Bed Bar - Fits OEM Units Only	1	
38	R150905		Bed Bar - Fits R&R Units Only	1	
39	R150476	3-3816, 3-6462, 52-4910, 57-4910	Screw - Bedknife 5/16-18 x 5/8	8	
40	R104-8300	104-8300, 104-8300 , 119-4041	Locknut - 5/16-18 Flanged Y/Zinc	4	
41	R106-3925	106-3925	Shim - 1/4 - Rear Roller HOC	8	
42	R106-3924	106-3924	Bracket - Rear Roller	2	
43	RP17609-2	106-9758, 3230-7	Bolt - Carriage 5/16-18 x 1-1/2	4	

All original equipment manufacturers names and part numbers are used for identification purposes only, and we are in no way implying that our products are original equipment parts. Prices subject to change without notice.



Replaces Toro Reelmaster 5410G Parts

*DPA Cutting Unit with 5" Reel - Model 03694 & 03695
Reel & Bedknife*



Item No	R&R Part No.	OEM Part No.	Description	Qty Req	Order Quantity
44	R3234-11	3234-11	Bolt - Hex Washer HD	2	
45	R150485	2410-30, 2410-30OSS	Cap - Protective Bearing Housing	1	
46	R237-68	237-68	O-Ring	2	
47	R3296-33	3296-33	Locknut - 5/8-18 ESNA Jam	2	
48	R106-9623	106-9623	Bolt - Bedbar	2	
49	R107-7773	107-7773	Bolt - Soc HD Cap 5/16-18 x 2-1/2	1	
50	R453017	01-166-0050, 01-166-0240, 01-166-0800, 24-13-AD, 24-14-AD, 32-8110, 3256-26, 3256-6, 453017, 69-8980, 87-7270	Washer - Flat 1/2	2	
51	R3234-19	3234-19	Bolt - Hex Washer 3/8-16x1-3/4	2	
52	R61-1950	61-1950	Washer - Nylon - Bed Bar	4	
53	R56-9520	56-9520	Bushing - Nyliner	2	
54	R106-9618	106-9618	Bushing - Rubber	2	
55	R107-2979	107-2979	Bolt - Shoulder	4	
56	R170714	302-34, 302-39, 62-3520	Fitting - Pressure Relief	2	
57	R108-9081	108-9081	Side Plate - RH - Fits OEM Units Only	1	
57	R150901		Side Plate - RH - Fits R&R Units Only	1	

All original equipment manufacturers names and part numbers are used for identification purposes only, and we are in no way implying that our products are original equipment parts. Prices subject to change without notice.



Replaces Toro Reelmaster 5410G Parts

DPA Cutting Unit with 5" Reel - Model 03694 & 03695
Reel & Bedknife



Item No	R&R Part No.	OEM Part No.	Description	Qty Req	Order Quantity
58	R302-5	21-6010, 302-11, 302-37, 302-47, 302-5, 302-57, 302-58, 302-6, 31-0300, 32-9660, 60-0800, 62-3880, 92-4181	Fitting - Grease	2	
59	R3231-4	01-157-0440, 01-173-0612, 3231-4	Bolt - Carriage 3/8-16 x 1-1/2	2	
60	R93-2489	93-2489	Bearing - Reel	2	
61	R107-4028	105-6757, 107-4028	Seal - Grease	2	
62	R105-8075	105-8075	Insert - Threaded - RH - 8 Tooth	1	
63	R105-8076	105-8076	Insert - Threaded - LH - 8 Tooth	1	
64	R92-2601	92-2601	Snap Ring	2	
65	R107-2954	107-2954	Nut - Bearing Adjuster	1	
66	R108-9080	108-9080	Side Plate - LH - Fits OEM Units Only	1	
66	R150900		Side Plate - LH - Fits R&R Units Only	1	
67	R108-9090-01	108-9090-01	Weight	1	

All original equipment manufacturers names and part numbers are used for identification purposes only, and we are in no way implying that our products are original equipment parts. Prices subject to change without notice.



Replaces Toro Reelmaster 5410G Parts

DPA Cutting Unit with 5" Reel - Model 03694 & 03695
Reel & Bedknife



Item No	R&R Part No.	OEM Part No.	Description	Qty Req	Order Quantity
68	R101526	01-150-0970, 01-178-0620, 101526, 20-53-AGD, 321-11, 3224-8, 323-11, 323-12, 323-31, 323-4, 323-47	Bolt - Hex HD 3/8-16 x 2-1/2 GR5	2	
69	R3256-74	3256-74	Washer - Flat	1	
70	R322-14	01-150-0830, 01-178-0524, 30-8900, 322-14	Bolt - Hex HD 5/16-18 x 3 GR5	1	
71	R322-16	322-16, Apr-00	Bolt - Hex HD 5/16-18 x 1-1/8	2	
73	R106-4214	106-4214	Set Screw - 1/4-20 x 1/2 Cone Point	1	
74	R32128-19	104-8301, 104-9301, 32128-19	Locknut - 3/8-16 Flanged Top Lock	4	
75	R107-2952	107-2952	Bracket - Front Roller	2	

All original equipment manufacturers names and part numbers are used for identification purposes only, and we are in no way implying that our products are original equipment parts. Prices subject to change without notice.



Replaces Toro Reelmaster 5410G Parts

DPA Cutting Unit with 5" Reel - Model 03694 & 03695
Reel & Bedknife



Item No	R&R Part No.	OEM Part No.	Description	Qty Req	Order Quantity
76	R453011	01-166-0100, 01-166-0120, 01-166-0270, 01-166-0500, 01-166-0600, 01-166-0620, 132-4593, 2356-3, 237-12, 24-10-AD, 24-11-AD, 24-11-BD, 24-12-AD, 24-12-BD, 30-9310, 32-8190, 3256-24, 3256-3, 3256-36, 3256-4, 453011, 47-9950, 48-9220, 513458, 7-0052	Washer - Flat 3/8 SAE Y/Zinc	4	
77	R107-4026	107-4026	Bolt - Hex Tap 3/8-16 x 3-3/4	2	
78	R108-4213	108-4213	Bracket- HOC - LH - Groomer	1	
79	R108-4214	108-4214	Bracket-HOC - RH - Groomer	1	
80	R110-4088-03	110-4088-03, 119-8010-03	Kickstand	1	
81	R3230-30	3230-30	Bolt - Carriage 5/16x4 1/2	4	
82	R92-2762	92-2762	Pin - Snap	1	
83	R107-2970	107-2970	Rod - Spring	1	
84	R108-9084	108-9084	Spring	1	
85	R119-0626	119-0626	Shim - Roller - 1/4 in - Slotted	8	

All original equipment manufacturers names and part numbers are used for identification purposes only, and we are in no way implying that our products are original equipment parts. Prices subject to change without notice.



Replaces Toro Reelmaster 5410G Parts

DPA Cutting Unit with 5" Reel - Model 03694 & 03695
Reel & Bedknife



Item No	R&R Part No.	OEM Part No.	Description	Qty Req	Order Quantity
86	R443818	01-191-0813, 3218-18, 3218-5, 3248-18	Nut - 1/2-13 Hex Jam Zinc	3	
87	R99-8662	99-8662	Tube - Spring	1	
88	R104-3396	104-3396	Bolt - Hex HD 3/8-16 x 2-1/4	1	
89	R32128-43	30-8990, 32128-43, 3290-357	Nut - Flanged Whiz - 3/8-16	5	
90	R125-2796	125-2796	Bracket- Front HOC	2	
<i>Tech Note: Fits 2013 & Newer:</i>					
91	R106-3937	106-3937	Carrier Frame Assy	1	
92	R67-9410	67-9410	Washer - Clevis Pin	1	
93	R108-4279	108-4279	Spacer - Frame	2	
94	R93-2877	93-2877	Bushing - Flanged	2	
95	R108-4284	108-4284	Shaft - Support	1	
96	R107-2996	107-2996	Grass Shield - Front	1	
97	R3234-5	3234-5, 62-3310	Bolt - 5/16-18x3/4 Hx Ser Was HD	4	
98	R93-6688	93-6688	Decal - Warning	1	
99	R120-0404	120-0404	Bracket- High HOC - LH	1	
<i>Tech Note: Fits 2011 & Newer:</i>					
100	R120-0405	120-0405	Bracket - High HOC - RH	1	
<i>Tech Note: Fits 2011 & Newer:</i>					
101	R120-5118	120-5118	Shaft - Adjuster	2	

All original equipment manufacturers names and part numbers are used for identification purposes only, and we are in no way implying that our products are original equipment parts. Prices subject to change without notice.



Replaces Toro Reelmaster 5410G Parts

DPA Cutting Unit with 5" Reel - Model 03694 & 03695
Reel & Bedknife



Item No	R&R Part No.	OEM Part No.	Description	Qty Req	Order Quantity
<i>Tech Note: 2012 & Newer:</i>					
102	R120-5116	120-5116	Washer - Wave	2	
103	R108-0015	108-0015	Washer - Flat	2	
104	R115-7039	115-7039	Screw - Adjuster - Bedbar	2	
105	R119-4155	119-4155	Washer - Hardened	2	
106	R120-5120	120-5120	Spring - Compression	2	
107	R3296-48	119-4039, 32146-7, 3296-34, 3296-48	Locknut - 7/16-14 ESNA	2	
108	R112-7451	100-9429, 112-7451	Bolt - Hex Tap 3/8-16 x 2-3/4	2	
109	R104-8301	104-8301, 104-9301, 109-6658, 133-7570	Locknut - 3/8-16 Nylon Flanged	4	

All original equipment manufacturers names and part numbers are used for identification purposes only, and we are in no way implying that our products are original equipment parts. Prices subject to change without notice.