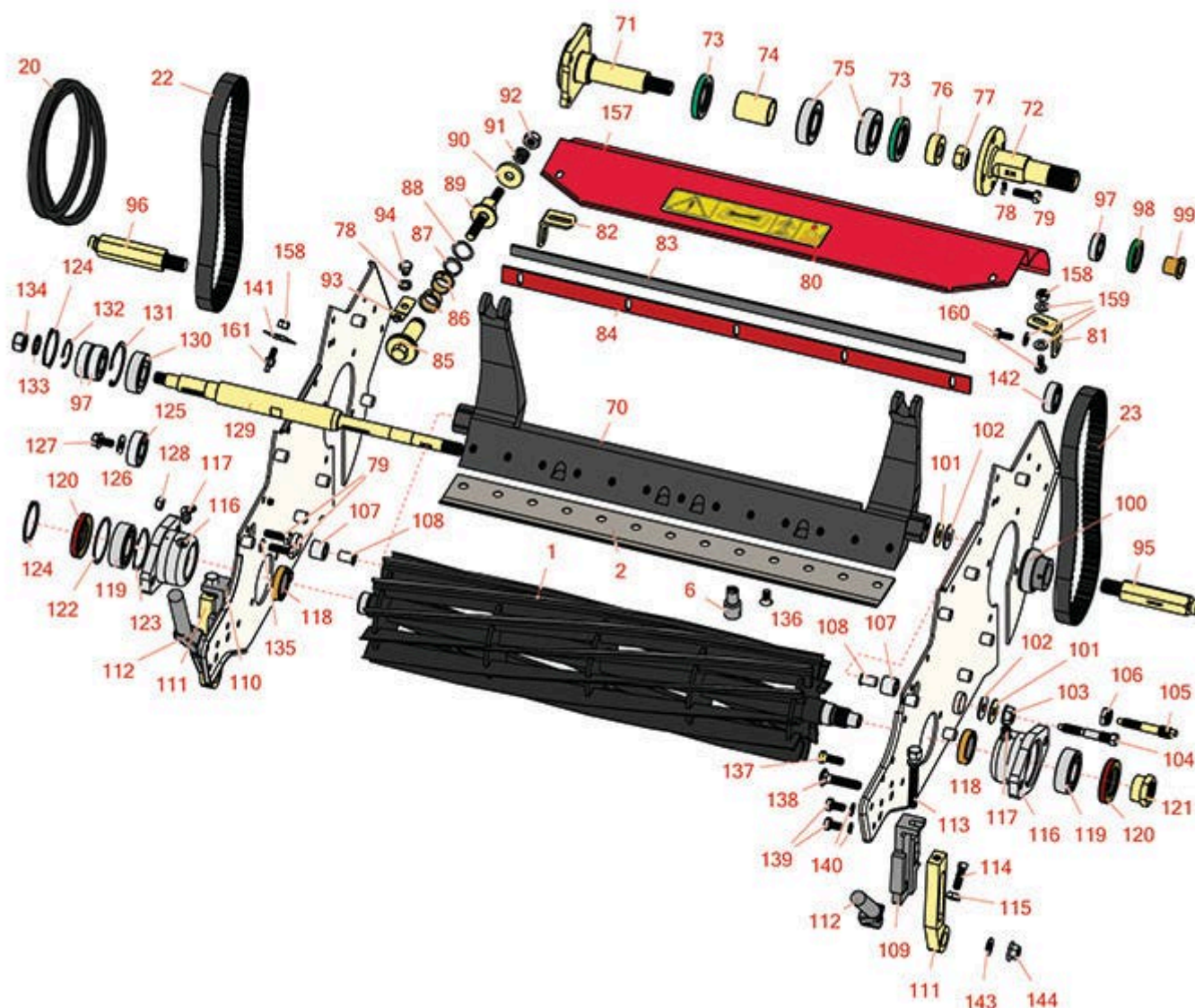




Replaces Toro Greensmaster 2000 Parts

Mower - Model 04036

Reel & Bedknife



All original equipment manufacturers names and part numbers are used for identification purposes only, and we are in no way implying that our products are original equipment parts. Prices subject to change without notice.



Replaces Toro Greensmaster 2000 Parts

Mower - Model 04036

Reel & Bedknife



Item No	R&R Part No.	OEM Part No.	Description	Qty Req	Order Quantity
---------	--------------	--------------	-------------	---------	----------------

R&R Reels, Lifetime Guaranteed

1	R13-8519	13-8519, 14-0839, 65-8200, 92-8653, 93-6097	Reel - 11 Blade	1	
---	-----------------	---	-----------------	---	--

Detail Description: R&R Reel blades are expertly crafted from premium high carbon-boron alloy steel, heat-treated to perfectly complement both R&R and OEM bedknives. Each reel undergoes precision cylindrical grinding on bearing surfaces, followed by relief grinding for optimal performance. Advanced computer balancing ensures extended reel and bearing life. Backed by our lifetime guarantee against defects in materials and craftsmanship under normal use, R&R Reels deliver unmatched durability and cutting precision you can trust.:

1	R150755	117-1449	Reel - 14 Blade	1	
---	----------------	----------	-----------------	---	--

Detail Description: R&R Reel blades are expertly crafted from premium high carbon-boron alloy steel, heat-treated to perfectly complement both R&R and OEM bedknives. Each reel undergoes precision cylindrical grinding on bearing surfaces, followed by relief grinding for optimal performance. Advanced computer balancing ensures extended reel and bearing life. Backed by our lifetime guarantee against defects in materials and craftsmanship under normal use, R&R Reels deliver unmatched durability and cutting precision you can trust.:

1	R92-9672	92-9672, 93-6087	Reel - 8 Blade	1	
---	-----------------	---------------------	----------------	---	--

Detail Description: R&R Reel blades are expertly crafted from premium high carbon-boron alloy steel, heat-treated to perfectly complement both R&R and OEM bedknives. Each reel undergoes precision cylindrical grinding on bearing surfaces, followed by relief grinding for optimal performance. Advanced computer balancing ensures extended reel and bearing life. Backed by our lifetime guarantee against defects in materials and craftsmanship under normal use, R&R Reels deliver unmatched durability and cutting precision you can trust.:

R&R Bedknives, Lifetime Guaranteed

2	R93-4264	57-4960, 63-8470, 93-4264	Bedknife - Low Cut .187 - 1.00 HOC	1	
---	-----------------	---------------------------------	---------------------------------------	---	--

Detail Description: R&R Bedknives are manufactured from high carbon-boron alloy steel and then hardened to RC46-49 to match the temper of our reel blades and original equipment reels. Bedknives are surface ground on the top and front edge and straightened three times before being packaged with oil for rust prevention. All R&R Bedknives now have an increased front edge grind for added life. All R&R Bedknives are guaranteed against defects in material and workmanship under normal use for the life of the part.:

All original equipment manufacturers names and part numbers are used for identification purposes only, and we are in no way implying that our products are original equipment parts. Prices subject to change without notice.



Replaces Toro Greensmaster 2000 Parts

Mower - Model 04036

Reel & Bedknife



Item No	R&R Part No.	OEM Part No.	Description	Qty Req	Order Quantity
---------	--------------	--------------	-------------	---------	----------------

2	R94-6392	62-2500, 94-6392	Bedknife - High Cut .312 - 1.00 HOC	1	
---	-----------------	---------------------	--	---	--

Detail Description: R&R Bedknives are manufactured from high carbon-boron alloy steel and then hardened to RC46-49 to match the temper of our reel blades and original equipment reels. Bedknives are surface ground on the top and front edge and straightened three times before being packaged with oil for rust prevention. All R&R Bedknives now have an increased front edge grind for added life. All R&R Bedknives are guaranteed against defects in material and workmanship under normal use for the life of the part.:

2	R93-4263	63-8560, 66-9320, 93-4263, 93-6039	Bedknife - Tournament Cut .125 - .500 HOC	1	
---	-----------------	---	--	---	--

Detail Description: R&R Bedknives are manufactured from high carbon-boron alloy steel and then hardened to RC46-49 to match the temper of our reel blades and original equipment reels. Bedknives are surface ground on the top and front edge and straightened three times before being packaged with oil for rust prevention. All R&R Bedknives now have an increased front edge grind for added life. All R&R Bedknives are guaranteed against defects in material and workmanship under normal use for the life of the part.:

2	R93-4262	65-8250, 93-4262, 93-4263	Bedknife - Micro Cut .062 - .187 HOC	1	
---	-----------------	---------------------------------	---	---	--

Detail Description: R&R Bedknives are manufactured from high carbon-boron alloy steel and then hardened to RC46-49 to match the temper of our reel blades and original equipment reels. Bedknives are surface ground on the top and front edge and straightened three times before being packaged with oil for rust prevention. All R&R Bedknives now have an increased front edge grind for added life. All R&R Bedknives are guaranteed against defects in material and workmanship under normal use for the life of the part.:

R&R Razor Tool Steel Bedknives, Lifetime Guaranteed

2	R115-1881	115-1881	Bedknife - Razor Tool Steel - 21 Tournament Cut .125 - .500 HOC	1	
---	------------------	----------	---	---	--

Detail Description: R&R Razor bedknives are manufactured from premium alloy tool steel steel and then hardened to RC48-51 to match the temper of our Razor reel blades and original equipment premium series reels. Bedknives are surface ground on the top and front edge and specially packaged for rust prevention. All R&R Bedknives now have an increased front edge grind for added life. All R&R Bedknives are guaranteed against defects in material and workmanship under normal use for the life of the part. You can expect up to double the life over standard bedknives.:

All original equipment manufacturers names and part numbers are used for identification purposes only, and we are in no way implying that our products are original equipment parts. Prices subject to change without notice.



Replaces Toro Greensmaster 2000 Parts

Mower - Model 04036

Reel & Bedknife



Item No	R&R Part No.	OEM Part No.	Description	Qty Req	Order Quantity
---------	--------------	--------------	-------------	---------	----------------

2	R115-1880	115-1880	Bedknife - Razor Tool Steel - 21 Micro Cut .062 - .187 HOC	1	
---	------------------	----------	--	---	--

Detail Description: R&R Razor bedknives are manufactured from premium alloy tool steel steel and then hardened to RC48-51 to match the temper of our Razor reel blades and original equipment premium series reels. Bedknives are surface ground on the top and front edge and specially packaged for rust prevention. All R&R Bedknives now have an increased front edge grind for added life. All R&R Bedknives are guaranteed against defects in material and workmanship under normal use for the life of the part. You can expect up to double the life over standard bedknives.:

2	R112-7475	112-7475	Bedknife - Razor Tool Steel - 22 x 3/8 Fairway	1	
---	------------------	----------	--	---	--

Detail Description: R&R Razor bedknives are manufactured from premium alloy tool steel steel and then hardened to RC48-51 to match the temper of our Razor reel blades and original equipment premium series reels. Bedknives are surface ground on the top and front edge and specially packaged for rust prevention. All R&R Bedknives now have an increased front edge grind for added life. All R&R Bedknives are guaranteed against defects in material and workmanship under normal use for the life of the part. You can expect up to double the life over standard bedknives.:

6	R51-0880	51-0880	Bedknife Screw Driver Tool	0	
---	-----------------	---------	----------------------------	---	--

Detail Description: Easily install and remove bed knife screws with the help of a ratchet with 3/8" drive. Tool manufactured with hardened alloy steel.:

Belts

20	R92-9218	92-9218	Belt - Engine Set of 2	1	
----	-----------------	---------	------------------------	---	--

22	R150525	65-6200	Belt - Reel Drive	1	
----	----------------	---------	-------------------	---	--

23	R150527	65-6210	Belt - Drum Drive	2	
----	----------------	---------	-------------------	---	--

Other Parts Available

70	R112-9279-03	112-9279-03	Bedbar - Aggressive	1	
----	---------------------	-------------	---------------------	---	--

70	R93-6053-01	65-6240, 93-6053, 93-6053-01	Bed Bar	1	
----	--------------------	------------------------------------	---------	---	--

71	R94-5850	94-5850	Spindle - Rear Roller Drum	1	
----	-----------------	---------	----------------------------	---	--

All original equipment manufacturers names and part numbers are used for identification purposes only, and we are in no way implying that our products are original equipment parts. Prices subject to change without notice.



Replaces Toro Greensmaster 2000 Parts

Mower - Model 04036

Reel & Bedknife



Item No	R&R Part No.	OEM Part No.	Description	Qty Req	Order Quantity
72	R88-7510	88-7510	Shaft - Extension RH Drum	1	
72	R88-7520	88-7520	Shaft - Extension LH Drum	1	
73	R253-159	253-159	Seal - Drum	2	
74	R65-6520	65-6520	Spacer	1	
75	RA203605	251-82, 6610	Bearing	2	
76	R65-6530	65-6530	Spacer - Seal	1	
77	R3296-33	3296-33	Locknut - 5/8-18 ESNA Jam	1	
78	R3253-4	01-166-0110, 01-166-0510, 23-10-GD, 24-7170, 30-8520, 3253-4, 48-9350, 48-9360, 48-9570, 68-9420, 99-7577	Washer - Lock 5/16 Zinc	10	
79	R322-5	01-178-0508, 20-26-AD, 20-26-AGD, 30-9000, 322-5, 513341, 519755, 908019P, N/A	Bolt - Hex HD 5/16-18 x 1	9	
80	R93-8064	93-8064	Decal - Warning	1	
81	R65-6450	65-6450	Bracket - LH	1	
82	R65-6460	65-6460	Bracket - RH	1	
83	R106-2619	106-2619	Seal - Strip	1	

All original equipment manufacturers names and part numbers are used for identification purposes only, and we are in no way implying that our products are original equipment parts. Prices subject to change without notice.



Replaces Toro Greensmaster 2000 Parts

Mower - Model 04036

Reel & Bedknife



Item No	R&R Part No.	OEM Part No.	Description	Qty Req	Order Quantity
84	R36-7260	36-7260	Bar - Cut Off Grass Shield	1	
85	R106-5363	106-5363	Shaft - Adjusting - Bed Bar - Stainless	2	
86	R106-5344	106-5344	Bushing - Flanged and Keyed	4	
87	R32120-93	32120-93	Snap Ring - HD	1	
88	R106-5335	106-5335	Wave Washer - Reel Adjusting	2	
89	R99-2096	99-2096	Screw - Bed Bar Adjustment - M10 Thrd 1 End	2	
90	R99-2098	99-2098	Washer - Bed Bar Adjuster	2	
91	R99-3755	99-3755	Spring - Bed Bar Adjusting	2	
92	R33025-00	32025-00, 33025-00	Locknut - 10mm x 1.5 Jam	2	
93	R99-2097	99-2097	Detent - Bed Bar Adjuster	2	
94	R322-26	322-26	Bolt - Hx HD 5/16-18 x 3/8	2	
95	R88-7580	88-7580	Shaft - Transport Wheel LH	1	
96	R88-7590	88-7590	Shaft - Transport Wheel RH	1	
97	R251-336	251-336	Bearing	2	
98	R364170	253-118, 62-3400	Seal	1	
99	R65-8770	65-8770	Bushing	2	
100	R71-1360	251-219, 251-253, 251-254, 251-320, 71-1360, 88-7880, 94-3405	Bearing	2	

All original equipment manufacturers names and part numbers are used for identification purposes only, and we are in no way implying that our products are original equipment parts. Prices subject to change without notice.



Replaces Toro Greensmaster 2000 Parts

Mower - Model 04036

Reel & Bedknife



Item No	R&R Part No.	OEM Part No.	Description	Qty Req	Order Quantity
101	R52-2860	119-4150, 52-2860	Washer - Bed Bar Pivot	4	
102	R52-2900	52-2900	Washer - Nylon	4	
103	R32128-48	32128-48	Locknut - 7/16-20 Flanged	2	
<i>Tech Note: Fits 2008 & 2009 Only:</i>					
104	R65-6270	119-4050, 65-6270	Bolt - Bed Bar	2	
<i>Tech Note: Fits 2008 & 2009:</i>					
105	R117-9493	117-9493	Bolt - Bed Bar - Hardened	2	
<i>Tech Note: Fits 2011 Only:</i>					
106	R3296-28	119-4154, 140-9234, 32127-34, 32128-7, 32128-8, 32136-7, 3296-28	Nut - 1/2-20 ESNA Jam	2	
<i>Tech Note: Fits 2011 Only:</i>					
107	R63-9510	63-9480, 63-9510	Bushing - Rubber For Bed Bar	2	
108	R52-2890	52-2890	Bushing - Flanged	2	
109	R93-6049	93-6049	Bracket - HOC LH	1	
110	R93-6048	93-6048	Bracket - HOC RH	1	
111	R93-6090	93-6090	Arm - Roller HOC	2	
112	R65-8570	65-7250, 65-8570	Rod - Mounting Grass Basket	2	
113	R93-6051	93-6051	Bolt - HOC	2	

All original equipment manufacturers names and part numbers are used for identification purposes only, and we are in no way implying that our products are original equipment parts. Prices subject to change without notice.



Replaces Toro Greensmaster 2000 Parts

Mower - Model 04036

Reel & Bedknife



Item No	R&R Part No.	OEM Part No.	Description	Qty Req	Order Quantity
114	R3242-4	3242-4	Screw - Set Sq HD 5/16-18 x 1	2	
115	R443106	01-188-0518, 22-12-AJD, 32111-4, 3217-4, 3217-6, 3218-2, 513295, 513412, 915112P, 915978, 915979	Nut - 5/16-18 Y/Zinc Plated	2	
116	R65-8640	65-6090, 65-8640	Housing - Bearing	2	
117	R700414	302-11, 302-19, 302-4, 32-8170	Zerk - Grease 1/4-28 45 Deg	2	
118	R253-96	253-96	Seal - Oil Single Lip Reel	2	
119	R251-342	251-342	Bearing - Reel	2	
120	R253-163	253-163	Seal - Reel	2	
121	R92-7302	65-8240, 86-7160, 92-7302	Locknut - Reel	1	
122	R32151-92	32151-92	Retaining Ring	1	
123	R3290-485	3290-485	Washer - Wave	1	
124	R32151-95	32151-90, 32151-95	Retaining Ring	2	
125	R38-7820	100-1048, 251-277, 251-5, 38-7820	Bearing - Ball	1	
126	R88-7200	88-7200	Washer - Flat	1	

All original equipment manufacturers names and part numbers are used for identification purposes only, and we are in no way implying that our products are original equipment parts. Prices subject to change without notice.



Replaces Toro Greensmaster 2000 Parts

Mower - Model 04036

Reel & Bedknife



Item No	R&R Part No.	OEM Part No.	Description	Qty Req	Order Quantity
127	R3234-14	3234-14, 3234-23	Bolt - Hex Serrated Washer HD	1	
128	R3296-29	1-804256, 3290-357, 3296-29, 915662P	Locknut - 5/16-18 ESNA	4	
129	R93-6056	93-6056	Shaft - Power	1	
130	R251-318	251-11, 251-204, 251-318, 251-38, 251-89	Bearing - Ball	1	
131	R32151-75	100-6594, 19-4590, 32120-11, 32120-75, 32151-75	Retaining Ring	1	
132	R32151-89	32151-89	Retaining Ring - Bowed	1	
133	R3254-4	21-3890, 26-8050, 3254-4	Washer - Lock 1/2 Z Int Star	1	
134	R3219-5	01-188-0820, 22-15-BJD, 22-15-BJKD, 3219-5	Nut - 1/2-20	1	
135	R3254-2	3254-2	Washer-Lock, 5/16 Int Star	2	
136	R150476	3-3816, 3-6462, 57-4910	Screw - Bedknife 5/16-18 x 5/8	13	
136	R150477	57-4910	Screw - Bedknife 5/16-18 x 1/2	13	
137	R92-8914	3231-5, 65-8530, 92-8914	Bolt - Tapered Face 5/16-18 x 7/8	4	

All original equipment manufacturers names and part numbers are used for identification purposes only, and we are in no way implying that our products are original equipment parts. Prices subject to change without notice.



Replaces Toro Greensmaster 2000 Parts

Mower - Model 04036

Reel & Bedknife



Item No	R&R Part No.	OEM Part No.	Description	Qty Req	Order Quantity
138	R3231-5	3231-5	Bolt - Carriage 3/8-16 x 1-3/4	2	
139	R322-2	322-2, 513338P	Bolt - Hex HD 5/16-18 x 5/8	4	
140	R3255-8	3255-8	Washer - Lock 5/16 Ext	4	
141	R65-6290	65-6259, 65-6290	Spring-Detent	1	
142	R251-338	251-338	Bearing - Ball	1	
143	R453011	01-166-0100, 01-166-0120, 01-166-0270, 01-166-0500, 01-166-0600, 01-166-0620, 132-4593, 2356-3, 237-12, 24-10-AD, 24-11-AD, 24-11-BD, 24-12-AD, 24-12-BD, 30-9310, 32-8190, 3256-24, 3256-3, 3256-36, 3256-4, 453011, 47-9950, 48-9220, 513458, 7-0052	Washer - Flat 3/8 SAE Y/Zinc	2	
144	R32128-21	32128-21	Locknut - Flanged 3/8-16 Whiz Top Lock	2	
157	R112-9471	112-9471	Grass Shield	1	

All original equipment manufacturers names and part numbers are used for identification purposes only, and we are in no way implying that our products are original equipment parts. Prices subject to change without notice.



Replaces Toro Greensmaster 2000 Parts

Mower - Model 04036

Reel & Bedknife



Item No	R&R Part No.	OEM Part No.	Description	Qty Req	Order Quantity
158	R301504	2296-42, 301504, 32127-24, 32128-33, 32146-17, 3296-16, 3296-42, 3296-42 , 915661P	Locknut - ESNA 1/4-20	4	
159	R3256-22	24-9-BD, 3-1032, 3256-1, 3256-22, 93-0954, 93-0989	Washer - Flat 1/4 Yellow	6	
160	R400106	321-3, 513315, 908002P	Bolt - Hex HD 1/4-20 x 5/8	4	
161	R93-9014	65-7020, 92-7676, 93-9014	Pin-Clutch, Actuat	1	

All original equipment manufacturers names and part numbers are used for identification purposes only, and we are in no way implying that our products are original equipment parts. Prices subject to change without notice.