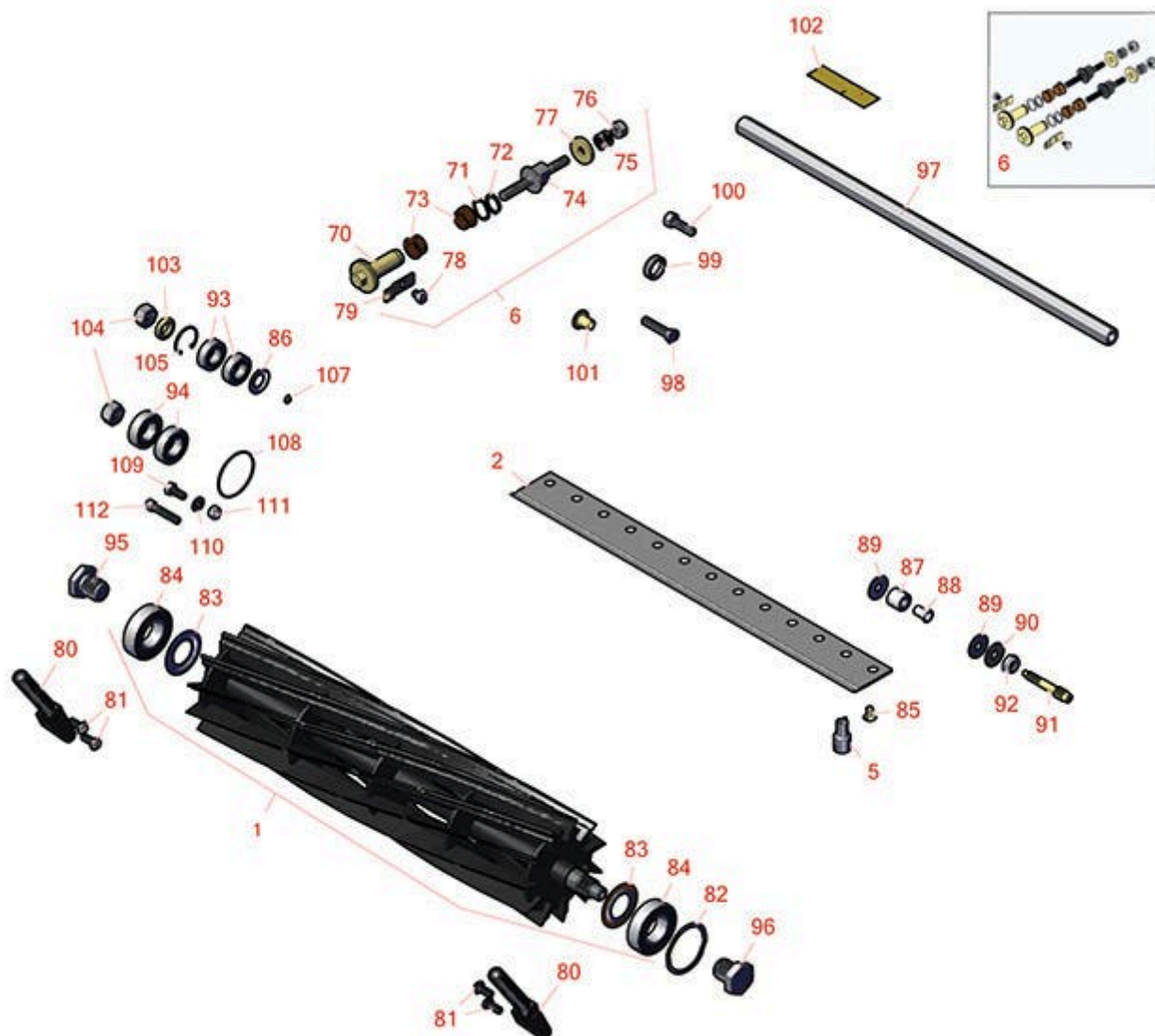




# Replaces Toro Greensmaster 1021 Parts

Cutting Unit - Models 04832, 04833, 04834

Reel & Bedknife



All original equipment manufacturers names and part numbers are used for identification purposes only, and we are in no way implying that our products are original equipment parts. Prices subject to change without notice.



# Replaces Toro Greensmaster 1021 Parts

Cutting Unit - Models 04832, 04833, 04834  
Reel & Bedknife



Item No	R&R Part No.	OEM Part No.	Description	Qty Req	Order Quantity
---------	--------------	--------------	-------------	---------	----------------

## R&R Reels, Lifetime Guaranteed

1	<b>R137-8513</b>	137-8513	Reel - 14 Blade Razor Series w/Bearings and Seals 21x5	1	
---	------------------	----------	--	---	--

*Detail Description: R&R Razor Reels are manufactured from a special high alloy steel and then hardened to RC48-51 to match the temper of our Razor bedknives and original equipment premium series bedknives. All R&R Reels are cylindrically ground on bearing surfaces, relief ground and precision computer balanced for extended bearing and reel life. R&R Products Reels are guaranteed against defects in material and workmanship for the life of the reel under normal use. You can expect up to double the life from Razor reels over standard reels.:*

1	<b>R137-8512</b>	137-8512	Reel - 11 Blade Razor Series w/Bearings and Seals 21x5	1	
---	------------------	----------	--	---	--

*Detail Description: R&R Razor Reels are manufactured from a special high alloy steel and then hardened to RC48-51 to match the temper of our Razor bedknives and original equipment premium series bedknives. All R&R Reels are cylindrically ground on bearing surfaces, relief ground and precision computer balanced for extended bearing and reel life. R&R Products Reels are guaranteed against defects in material and workmanship for the life of the reel under normal use. You can expect up to double the life from Razor reels over standard reels.:*

1	<b>R137-8511</b>	137-8511	Reel - 8 Blade Razor Series w/Bearings and Seals 21x5	1	
---	------------------	----------	---	---	--

*Detail Description: R&R Razor Reels are manufactured from a special high alloy steel and then hardened to RC48-51 to match the temper of our Razor bedknives and original equipment premium series bedknives. All R&R Reels are cylindrically ground on bearing surfaces, relief ground and precision computer balanced for extended bearing and reel life. R&R Products Reels are guaranteed against defects in material and workmanship for the life of the reel under normal use. You can expect up to double the life from Razor reels over standard reels.:*

## R&R Bedknives, Lifetime Guaranteed

2	<b>R93-4262</b>	65-8250, 93-4262, 93-4263	Bedknife - Micro Cut .062 - .187 HOC	1	
---	-----------------	---------------------------------	--------------------------------------	---	--

*Detail Description: R&R Bedknives are manufactured from high carbon-boron alloy steel and then hardened to RC46-49 to match the temper of our reel blades and original equipment reels. Bedknives are surface ground on the top and front edge and straightened three times before being packaged with oil for rust prevention. All R&R Bedknives now have an increased front edge grind for added life. All R&R Bedknives are guaranteed against defects in material and workmanship under normal use for the life of the part.:*

All original equipment manufacturers names and part numbers are used for identification purposes only, and we are in no way implying that our products are original equipment parts. Prices subject to change without notice.



## Replaces Toro Greensmaster 1021 Parts

Cutting Unit - Models 04832, 04833, 04834  
Reel & Bedknife



Item No	R&R Part No.	OEM Part No.	Description	Qty Req	Order Quantity
2	<b>R108-4303</b>	104-7720, 108-4303	Bedknife - Micro Cut Extended .062 - .187 HOC	1	
<i>Detail Description: R&amp;R Bedknives are manufactured from high carbon-boron alloy steel and then hardened to RC46-49 to match the temper of our reel blades and original equipment reels. Bedknives are surface ground on the top and front edge and straightened three times before being packaged with oil for rust prevention. All R&amp;R Bedknives now have an increased front edge grind for added life. All R&amp;R Bedknives are guaranteed against defects in material and workmanship under normal use for the life of the part.:</i>					
2	<b>R108-4302</b>	108-4301, 108-4302	Bedknife - Tournament Cut Extended .125 - .500 HOC	1	
<i>Detail Description: R&amp;R Bedknives are manufactured from high carbon-boron alloy steel and then hardened to RC46-49 to match the temper of our reel blades and original equipment reels. Bedknives are surface ground on the top and front edge and straightened three times before being packaged with oil for rust prevention. All R&amp;R Bedknives now have an increased front edge grind for added life. All R&amp;R Bedknives are guaranteed against defects in material and workmanship under normal use for the life of the part.:</i>					
2	<b>R93-4263</b>	63-8560, 66-9320, 93-4263, 93-6039	Bedknife - Tournament Cut .125 - .500 HOC	1	
<i>Detail Description: R&amp;R Bedknives are manufactured from high carbon-boron alloy steel and then hardened to RC46-49 to match the temper of our reel blades and original equipment reels. Bedknives are surface ground on the top and front edge and straightened three times before being packaged with oil for rust prevention. All R&amp;R Bedknives now have an increased front edge grind for added life. All R&amp;R Bedknives are guaranteed against defects in material and workmanship under normal use for the life of the part.:</i>					
2	<b>R93-4264</b>	57-4960, 63-8470, 93-4264	Bedknife - Low Cut .187 - 1.00 HOC	1	
<i>Detail Description: R&amp;R Bedknives are manufactured from high carbon-boron alloy steel and then hardened to RC46-49 to match the temper of our reel blades and original equipment reels. Bedknives are surface ground on the top and front edge and straightened three times before being packaged with oil for rust prevention. All R&amp;R Bedknives now have an increased front edge grind for added life. All R&amp;R Bedknives are guaranteed against defects in material and workmanship under normal use for the life of the part.:</i>					
2	<b>R94-6392</b>	62-2500, 94-6392	Bedknife - High Cut .312 - 1.00 HOC	1	

All original equipment manufacturers names and part numbers are used for identification purposes only, and we are in no way implying that our products are original equipment parts. Prices subject to change without notice.



## Replaces Toro Greensmaster 1021 Parts

Cutting Unit - Models 04832, 04833, 04834  
Reel & Bedknife



Item No	R&R Part No.	OEM Part No.	Description	Qty Req	Order Quantity
---------	--------------	--------------	-------------	---------	----------------

*Detail Description:* R&R Bedknives are manufactured from high carbon-boron alloy steel and then hardened to RC46-49 to match the temper of our reel blades and original equipment reels. Bedknives are surface ground on the top and front edge and straightened three times before being packaged with oil for rust prevention. All R&R Bedknives now have an increased front edge grind for added life. All R&R Bedknives are guaranteed against defects in material and workmanship under normal use for the life of the part.:

2	<b>R63-8610</b>	63-8610	Bedknife - Fairway Cut .375 - 1.00 HOC	1	
---	-----------------	---------	--	---	--

*Detail Description:* R&R Bedknives are manufactured from high carbon-boron alloy steel and then hardened to RC46-49 to match the temper of our reel blades and original equipment reels. Bedknives are surface ground on the top and front edge and straightened three times before being packaged with oil for rust prevention. All R&R Bedknives now have an increased front edge grind for added life. All R&R Bedknives are guaranteed against defects in material and workmanship under normal use for the life of the part.:

2	<b>R150462</b>	63-8610, 94-6396	Bedknife - 7 Hole Thick 5/16	1	
---	----------------	---------------------	------------------------------	---	--

*Detail Description:* R&R Bedknives are manufactured from high carbon-boron alloy steel and then hardened to RC46-49 to match the temper of our reel blades and original equipment reels. Bedknives are surface ground on the top and front edge and straightened three times before being packaged with oil for rust prevention. All R&R Bedknives now have an increased front edge grind for added life. All R&R Bedknives are guaranteed against defects in material and workmanship under normal use for the life of the part.:

2	<b>R94-6396</b>	10-4900, 54-9150, 94-6396, Oct-00	Bedknife - High Cut 5/16"-1" HOC	1	
---	-----------------	--	----------------------------------	---	--

*Detail Description:* R&R Bedknives are manufactured from high carbon-boron alloy steel and then hardened to RC46-49 to match the temper of our reel blades and original equipment reels. Bedknives are surface ground on the top and front edge and straightened three times before being packaged with oil for rust prevention. All R&R Bedknives now have an increased front edge grind for added life. All R&R Bedknives are guaranteed against defects in material and workmanship under normal use for the life of the part.:

### R&R Razor Tool Steel, Lifetime Guaranteed

2	<b>R115-1880</b>	115-1880	Bedknife - Razor Tool Steel - 21 Micro Cut .062 - .187 HOC	1	
---	------------------	----------	--	---	--

All original equipment manufacturers names and part numbers are used for identification purposes only, and we are in no way implying that our products are original equipment parts. Prices subject to change without notice.



# Replaces Toro Greensmaster 1021 Parts

Cutting Unit - Models 04832, 04833, 04834

Reel & Bedknife



Item No	R&R Part No.	OEM Part No.	Description	Qty Req	Order Quantity
---------	--------------	--------------	-------------	---------	----------------

*Detail Description: R&R Razor bedknives are manufactured from premium alloy tool steel steel and then hardened to RC48-51 to match the temper of our Razor reel blades and original equipment premium series reels. Bedknives are surface ground on the top and front edge and specially packaged for rust prevention. All R&R Bedknives now have an increased front edge grind for added life. All R&R Bedknives are guaranteed against defects in material and workmanship under normal use for the life of the part. You can expect up to double the life over standard bedknives.:*

2	<b>R115-1881</b>	115-1881	Bedknife - Razor Tool Steel - 21 Tournament Cut .125 - .500 HOC	1	
---	------------------	----------	---	---	--

*Detail Description: R&R Razor bedknives are manufactured from premium alloy tool steel steel and then hardened to RC48-51 to match the temper of our Razor reel blades and original equipment premium series reels. Bedknives are surface ground on the top and front edge and specially packaged for rust prevention. All R&R Bedknives now have an increased front edge grind for added life. All R&R Bedknives are guaranteed against defects in material and workmanship under normal use for the life of the part. You can expect up to double the life over standard bedknives.:*

2	<b>R139-4320</b>	139-4320	Bedknife - Razor Tool Steel - Tournament Short	1	
---	------------------	----------	---	---	--

2	<b>R139-4321</b>	139-4321	Bedknife - Razor Tool Steel - Tournament Short	1	
---	------------------	----------	---	---	--

## Overhaul Kits and Service Tools

5	<b>R51-0880</b>	51-0880	Bedknife Screw Driver Tool	1	
---	-----------------	---------	----------------------------	---	--

*Detail Description: Easily install and remove bed knife screws with the help of a ratchet with 3/8" drive. Tool manufactured with hardened alloy steel.:*

6	<b>R121-2637</b>	121-2637	Overhaul Kit - DPA Adjusters	1	
---	------------------	----------	------------------------------	---	--

## Other Parts Available

70	<b>R106-5363</b>	106-5363	Shaft - Adjusting - Bed Bar - Stainless	2	
----	------------------	----------	--	---	--

71	<b>R119-4164</b>	119-4164	Washer - Wave	2	
----	------------------	----------	---------------	---	--

72	<b>R32120-93</b>	32120-93	Snap Ring - HD	2	
----	------------------	----------	----------------	---	--

73	<b>R106-5344</b>	106-5344	Bushing - Flanged and Keyed	4	
----	------------------	----------	-----------------------------	---	--

All original equipment manufacturers names and part numbers are used for identification purposes only, and we are in no way implying that our products are original equipment parts. Prices subject to change without notice.



## Replaces Toro Greensmaster 1021 Parts

Cutting Unit - Models 04832, 04833, 04834

Reel & Bedknife



Item No	R&R Part No.	OEM Part No.	Description	Qty Req	Order Quantity
74	<b>R115-7039</b>	115-7039	Screw - Adjuster - Bedbar	2	
74	<b>R137-6130</b>	137-6130	Screw - Adjuster - Hardened - Bedbar	2	
75	<b>R119-4156</b>	119-4156	Spring - Compression	2	
76	<b>R3296-48</b>	119-4039, 32146-7, 3296-34, 3296-48	Locknut - 7/16-14 ESNA	2	
77	<b>R119-4155</b>	119-4155	Washer - Hardened	2	
78	<b>R114-9396</b>	114-9396, 119-4067	Bolt - Hex HD 5/16-18 x 3/8	2	
79	<b>R99-2097</b>	99-2097	Detent - Bed Bar Adjuster	2	
80	<b>R65-8570</b>	65-7250, 65-8570	Rod - Mounting Grass Basket	2	
81	<b>R3274-55</b>	3274-55	Bolt - 5/16-18 x 3/4 Button HD Soc	4	
82	<b>R105-5700</b>	105-5700, 115-5258	Wave Washer - Bearing	1	
83	<b>R115-3299</b>	115-3299	Seal- Flocked	2	
84	<b>R115-3296</b>	115-3296	Bearing	2	
84	<b>R140-5510</b>	140-5510	Bearing - Sealed Stainless	2	
85	<b>R119-4151</b>	119-4151	Screw - Bedknife 5/16-18 x 17/32	13	
86	<b>R115-6923</b>	115-6923	Shield - Bearing - Flocked	1	
87	<b>R119-4153</b>	119-4153	Bushing - Rubber	2	
88	<b>R52-2890</b>	52-2890	Bushing - Flanged	2	
89	<b>R52-2900</b>	52-2900	Washer - Nylon	4	

All original equipment manufacturers names and part numbers are used for identification purposes only, and we are in no way implying that our products are original equipment parts. Prices subject to change without notice.



## Replaces Toro Greensmaster 1021 Parts

Cutting Unit - Models 04832, 04833, 04834

Reel & Bedknife



Item No	R&R Part No.	OEM Part No.	Description	Qty Req	Order Quantity
90	<b>R52-2860</b>	119-4150, 52-2860	Washer - Bed Bar Pivot	2	
91	<b>R117-9493</b>	117-9493	Bolt - Bed Bar - Hardened	2	
92	<b>R3296-28</b>	119-4154, 140-9234, 32127-34, 32128-7, 32128-8, 32136-7, 3296-28	Nut - 1/2-20 ESNA Jam	2	
93	<b>R115-6869</b>	115-6869	Bearing - Ball -Stainless	2	
94	<b>R117-6831</b>	117-6831	Bearing - Stainless	2	
95	<b>R133-9168</b>	133-9168	Nut - Reel - RH Thread	1	
96	<b>R137-0326</b>	137-0326	Nut - Reel - LH Thread	1	
97	<b>R133-9127</b>	133-9127	Support Rod - Frame	1	
98	<b>R99-3773</b>	99-3773	Bolt- Plow 3/8-16 x 1 3/4	2	
99	<b>R138-1549</b>	138-1549	Seal	1	
100	<b>R3274-1</b>	3274-1	Bolt - 3/8-16 x 1 1/4 Soc HD Cap	2	
101	<b>R71-4411</b>	71-4411	Spacer - Coupling	2	
102	<b>R137-9706</b>	137-9706	Decal- Warning	1	
103	<b>R133-9155</b>	133-9155	Spacer - Pulley - Reel	2	
104	<b>R3296-25</b>	30-3380, 32127-21, 32127-31, 3290-160, 3290-33, 3296-13, 3296-25, 3296-45, 329645	Locknut - 1/2-13 Heavy ESNA	2	

All original equipment manufacturers names and part numbers are used for identification purposes only, and we are in no way implying that our products are original equipment parts. Prices subject to change without notice.



## Replaces Toro Greensmaster 1021 Parts

Cutting Unit - Models 04832, 04833, 04834

Reel & Bedknife



Item No	R&R Part No.	OEM Part No.	Description	Qty Req	Order Quantity
105	R458461	32151-34	Snap Ring	1	
107	R237-21	237-21, 327-21	O-Ring	1	
108	R360-0398	360-0398	O-Ring	1	
109	R322-3	01-150-1420, 01-178-0506, 20-24-AD, 20-24-AGD, 322-3, 48-9270, 513339, 908017P	Bolt - Hex HD 5/16-18 x 3/4	1	
109	R400184	322-2, 322-3	Screw - 5/16-18 x 3/4 Hex	1	
109	R322-2	322-2, 513338P	Bolt - Hex HD 5/16-18 x 5/8	1	
110	R310266	3256-23, 3256-3, 3556-3	Washer - Flat 5/16 USS	2	
110	R453009	01-166-0400, 24-10-BD, 24-9-AD, 32-9650, 3256-2, 3256-23, 3256-3, 3256-67, 3290-217, 3556-3, 4-2390, 7-0152	Washer - Flat 5/16 SAE	0	

All original equipment manufacturers names and part numbers are used for identification purposes only, and we are in no way implying that our products are original equipment parts. Prices subject to change without notice.





## Replaces Toro Greensmaster 1021 Parts

Cutting Unit - Models 04832, 04833, 04834

Reel & Bedknife



Item No	R&R Part No.	OEM Part No.	Description	Qty Req	Order Quantity
110	R453011	01-166-0100, 01-166-0120, 01-166-0270, 01-166-0500, 01-166-0600, 01-166-0620, 132-4593, 2356-3, 237-12, 24-10-AD, 24-11-AD, 24-11-BD, 24-12-AD, 24-12-BD, 30-9310, 32-8190, 3256-24, 3256-3, 3256-36, 3256-4, 453011, 47-9950, 48-9220, 513458, 7-0052	Washer - Flat 3/8 SAE Y/Zinc	2	
111	R3296-47	3296-47	Locknut - 5/16-18 Jam Nyloc	2	
112	R330748	3274-22, 330748	Screw - 5/16-18x1 Socket HD	1	

All original equipment manufacturers names and part numbers are used for identification purposes only, and we are in no way implying that our products are original equipment parts. Prices subject to change without notice.