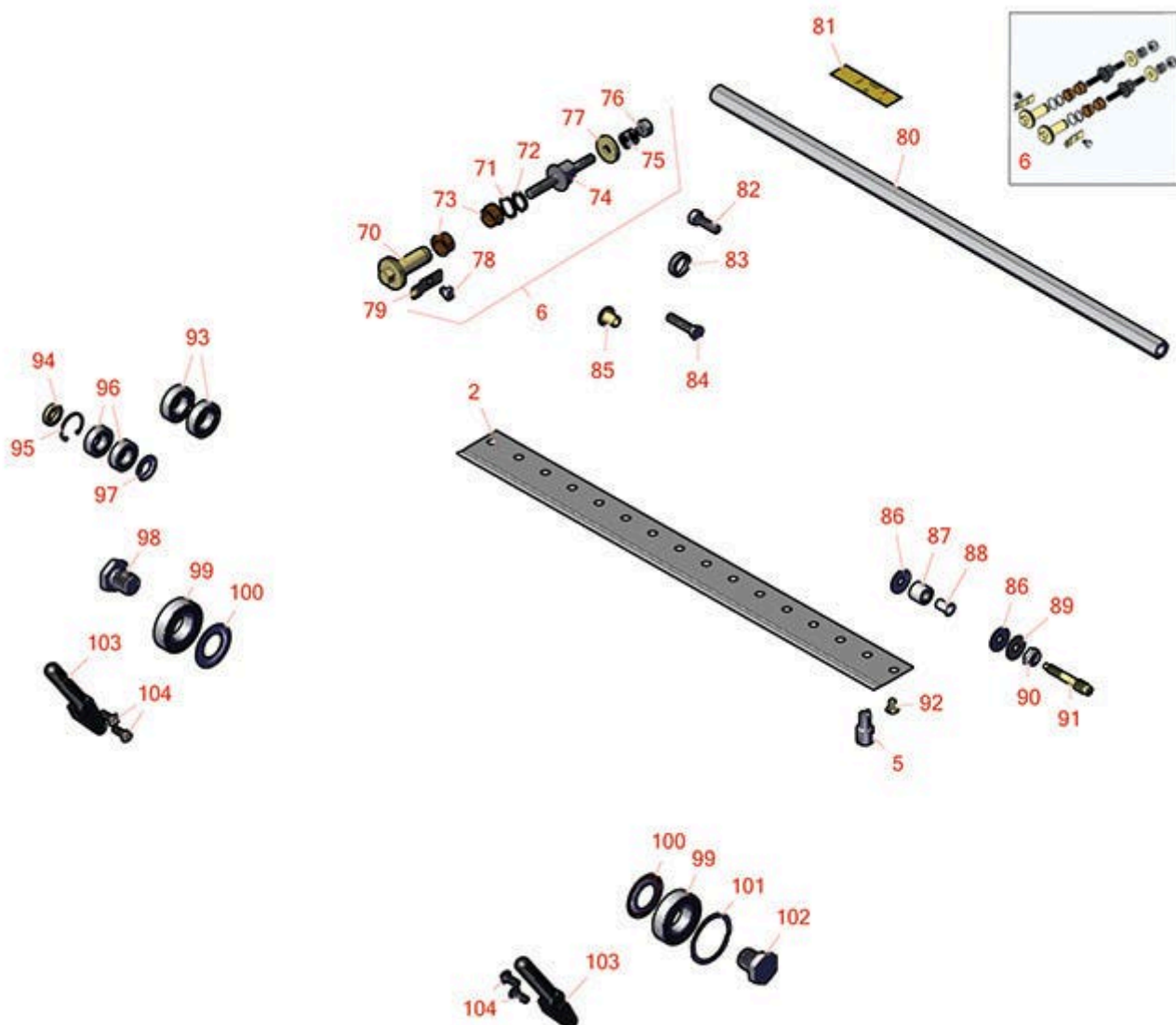




# Replaces Toro Greensmaster 1026 Parts

Cutting Unit - Model 04842 & 04843

Reel & Bedknife



All original equipment manufacturers names and part numbers are used for identification purposes only, and we are in no way implying that our products are original equipment parts. Prices subject to change without notice.



## Replaces Toro Greensmaster 1026 Parts

Cutting Unit - Model 04842 & 04843  
Reel & Bedknife



Item R&R No Part No.	OEM Part No.	Description	Qty Req	Order Quantity
-------------------------	-----------------	-------------	------------	-------------------

### **R&R Bedknives, Lifetime Guaranteed**

2	<b>R112-9275</b>	112-9275	Bedknife - Micro Cut	1
---	------------------	----------	----------------------	---

*Detail Description: R&R Bedknives are manufactured from high carbon-boron alloy steel and then hardened to RC46-49 to match the temper of our reel blades and original equipment reels. Bedknives are surface ground on the top and front edge and straightened three times before being packaged with oil for rust prevention. All R&R Bedknives now have an increased front edge grind for added life. All R&R Bedknives are guaranteed against defects in material and workmanship under normal use for the life of the part.:*

2	<b>R94-5885</b>	94-5885	Bedknife - Tournament	1
---	-----------------	---------	-----------------------	---

*Detail Description: R&R Bedknives are manufactured from high carbon-boron alloy steel and then hardened to RC46-49 to match the temper of our reel blades and original equipment reels. Bedknives are surface ground on the top and front edge and straightened three times before being packaged with oil for rust prevention. All R&R Bedknives now have an increased front edge grind for added life. All R&R Bedknives are guaranteed against defects in material and workmanship under normal use for the life of the part.:*

2	<b>R93-9015</b>	93-9015	Bedknife - Thin	1
---	-----------------	---------	-----------------	---

*Detail Description: R&R Bedknives are manufactured from high carbon-boron alloy steel and then hardened to RC46-49 to match the temper of our reel blades and original equipment reels. Bedknives are surface ground on the top and front edge and straightened three times before being packaged with oil for rust prevention. All R&R Bedknives now have an increased front edge grind for added life. All R&R Bedknives are guaranteed against defects in material and workmanship under normal use for the life of the part.:*

2	<b>R107-8181</b>	107-8181	Bedknife - Super Thick Cut	1
---	------------------	----------	----------------------------	---

*Detail Description: R&R Bedknives are manufactured from high carbon-boron alloy steel and then hardened to RC46-49 to match the temper of our reel blades and original equipment reels. Bedknives are surface ground on the top and front edge and straightened three times before being packaged with oil for rust prevention. All R&R Bedknives now have an increased front edge grind for added life. All R&R Bedknives are guaranteed against defects in material and workmanship under normal use for the life of the part.:*

2	<b>R104-2646</b>	104-2646	Bedknife - High Cut 5/16-1 in	1
---	------------------	----------	-------------------------------	---

*Detail Description: R&R Bedknives are manufactured from high carbon-boron alloy steel and then hardened to RC46-49 to match the temper of our reel blades and original equipment reels. Bedknives are surface ground on the top and front edge and straightened three times before being packaged with oil for rust prevention. All R&R Bedknives now have an increased front edge grind for added life. All R&R Bedknives are guaranteed against defects in material and workmanship under normal use for the life of the part.:*

All original equipment manufacturers names and part numbers are used for identification purposes only, and we are in no way implying that our products are original equipment parts. Prices subject to change without notice.



# Replaces Toro Greensmaster 1026 Parts

Cutting Unit - Model 04842 & 04843  
Reel & Bedknife



Item No	R&R Part No.	OEM Part No.	Description	Qty Req	Order Quantity
---------	--------------	--------------	-------------	---------	----------------

## ***R&R Razor Toll Steel Bedknives, Lifetime Guaranteed***

2	<b>R139-4322</b>	139-4322	Bedknife - Razor, 26" Microcut Short	1	
2	<b>R139-4323</b>	139-4323	Bedknife - Razor, 26" Tournament Short	1	

## ***Overhaul Kits and Tools***

5	<b>R51-0880</b>	51-0880	Bedknife Screw Driver Tool	1	
<i>Detail Description: Easily install and remove bed knife screws with the help of a ratchet with 3/8" drive. Tool manufactured with hardened alloy steel.:</i>					
6	<b>R121-2637</b>	121-2637	Overhaul Kit - DPA Adjusters	1	

## ***Other Parts Available***

70	<b>R106-5363</b>	106-5363	Shaft - Adjusting - Bed Bar - Stainless	2	
71	<b>R119-4164</b>	119-4164	Washer - Wave	2	
72	<b>R32120-93</b>	32120-93	Snap Ring - HD	2	
73	<b>R106-5344</b>	106-5344	Bushing - Flanged and Keyed	4	
74	<b>R115-7039</b>	115-7039	Screw - Adjuster - Bedbar	2	
74	<b>R137-6130</b>	137-6130	Screw - Adjuster - Hardened - Bedbar	2	
75	<b>R119-4156</b>	119-4156	Spring - Compression	2	
76	<b>R3296-48</b>	119-4039, 32146-7, 3296-34, 3296-48	Locknut - 7/16-14 ESNA	2	
77	<b>R119-4155</b>	119-4155	Washer - Hardened	2	
78	<b>R114-9396</b>	114-9396, 119-4067	Bolt - Hex HD 5/16-18 x 3/8	2	

All original equipment manufacturers names and part numbers are used for identification purposes only, and we are in no way implying that our products are original equipment parts. Prices subject to change without notice.



## Replaces Toro Greensmaster 1026 Parts

Cutting Unit - Model 04842 & 04843  
Reel & Bedknife



Item No	R&R Part No.	OEM Part No.	Description	Qty Req	Order Quantity
79	<b>R99-2097</b>	99-2097	Detent - Bed Bar Adjuster	2	
80	<b>R138-1551</b>	138-1551	Rod - Frame	1	
81	<b>R137-9706</b>	137-9706	Decal- Warning	1	
82	<b>R3274-1</b>	3274-1	Bolt - 3/8-16 x 1 1/4 Soc HD Cap	2	
83	<b>R138-1549</b>	138-1549	Seal	1	
84	<b>R99-3773</b>	99-3773	Bolt- Plow 3/8-16 x 1 3/4	2	
85	<b>R71-4411</b>	71-4411	Spacer - Coupling	2	
86	<b>R52-2900</b>	52-2900	Washer - Nylon	4	
87	<b>R119-4153</b>	119-4153	Bushing - Rubber	2	
88	<b>R52-2890</b>	52-2890	Bushing - Flanged	2	
89	<b>R52-2860</b>	119-4150, 52-2860	Washer - Bed Bar Pivot	2	
90	<b>R3296-28</b>	119-4154, 140-9234, 32127-34, 32128-7, 32128-8, 32136-7, 3296-28	Nut - 1/2-20 ESNA Jam	2	
91	<b>R117-9493</b>	117-9493	Bolt - Bed Bar - Hardened	2	
92	<b>R119-4151</b>	119-4151	Screw - Bedknife 5/16-18 x 17/32	13	
93	<b>R117-6831</b>	117-6831	Bearing - Stainless	2	
94	<b>R133-9155</b>	133-9155	Spacer - Pulley - Reel	1	
95	<b>R458461</b>	32151-34	Snap Ring	0	
96	<b>R115-6869</b>	115-6869	Bearing - Ball -Stainless	2	

All original equipment manufacturers names and part numbers are used for identification purposes only, and we are in no way implying that our products are original equipment parts. Prices subject to change without notice.



## Replaces Toro Greensmaster 1026 Parts

Cutting Unit - Model 04842 & 04843

Reel & Bedknife



Item No	R&R Part No.	OEM Part No.	Description	Qty Req	Order Quantity
97	<b>R115-6923</b>	115-6923	Shield - Bearing - Flocked	1	
98	<b>R133-9168</b>	133-9168	Nut - Reel - RH Thread	1	
99	<b>R115-3296</b>	115-3296	Bearing	2	
99	<b>R140-5510</b>	140-5510	Bearing - Sealed Stainless	2	
100	<b>R115-3299</b>	115-3299	Seal- Flocked	2	
101	<b>R105-5700</b>	105-5700, 115-5258	Wave Washer - Bearing	1	
102	<b>R137-0326</b>	137-0326	Nut - Reel - LH Thread	1	
103	<b>R65-8570</b>	65-7250, 65-8570	Rod - Mounting Grass Basket	2	
104	<b>R3274-55</b>	3274-55	Bolt - 5/16-18 x 3/4 Button HD Soc	4	

All original equipment manufacturers names and part numbers are used for identification purposes only, and we are in no way implying that our products are original equipment parts. Prices subject to change without notice.