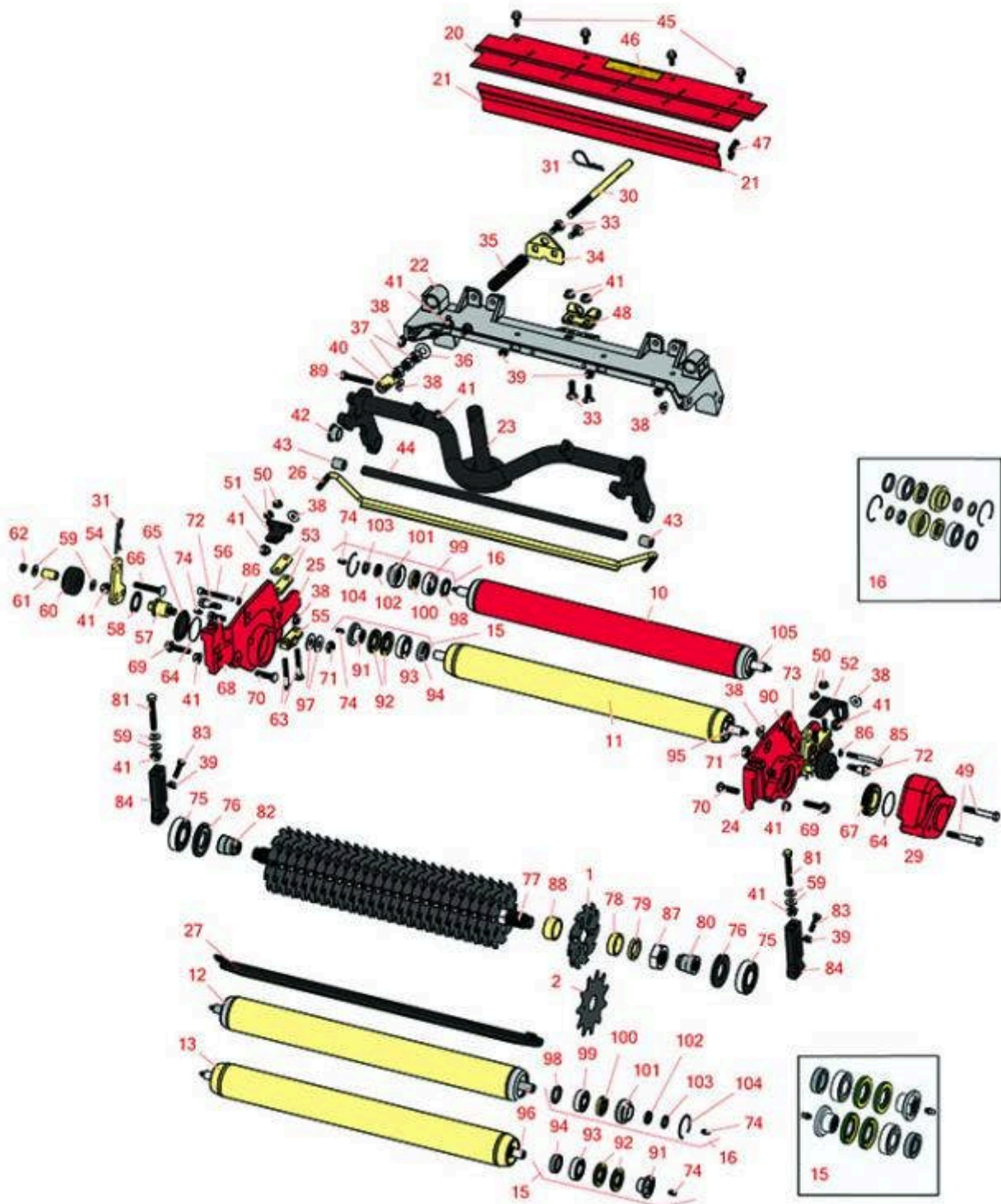




# Replaces Toro Reelmaster 5410G Parts

Verti-Cut Unit - Model 03664

Verti-Cut Reel & Frame



All original equipment manufacturers names and part numbers are used for identification purposes only, and we are in no way implying that our products are original equipment parts. Prices subject to change without notice.



# Replaces Toro Reelmaster 5410G Parts

Verti-Cut Unit - Model 03664

Verti-Cut Reel & Frame



| Item No   | R&R Part No.        | OEM Part No.          | Description                          | Qty Req | Order Quantity |
|---|---------------------|-----------------------|--------------------------------------|---------|----------------|
| <b>Blades</b>   |                     |                       |                                      |         |                |
| 1   | <b>R150209C</b>     | 106-6355              | Verti-Cut Blade - Carbide Tipped 2mm | 25      |                |
| 2   | <b>R17-1590</b>     | 17-1590               | Verti-Cut Blade                      | 25      |                |
| <b>Rollers</b>  |                     |                       |                                      |         |                |
| 10  | <b>R107-4040</b>    | 107-4040              | Roller - Smooth Tubular Steel        | 1       |                |
| <i>Tech Note: Constructed with a through shaft, this heavy-duty roller uses greasable ball bearings. (2006 - 2007):</i>                                       |                     |                       |                                      |         |                |
| 11  | <b>R114-5404</b>    | 114-5404,<br>137-6107 | Roller - Smooth Tubular Steel - Long | 1       |                |
| <i>Tech Note: Constructed with a through shaft, this heavy-duty roller uses greasable stainless ball bearings. (2006 - 2007):</i>                             |                     |                       |                                      |         |                |
| 12  | <b>R110-9614</b>    | 110-9614              | Roller Assy - 2.5 Solid Front        | 1       |                |
| <i>Tech Note: Constructed with a through shaft, this heavy duty roller uses greasable ball bearings.:</i>   |                     |                       |                                      |         |                |
| 13  | <b>R114-5419</b>    | 114-5419,<br>137-6109 | Roller - Smooth Tubular Steel        | 1       |                |
| <b>Overhaul kits</b>  |                     |                       |                                      |         |                |
| 15  | <b>R114-5430</b>    | 114-5430              | Overhaul Kit - Roller                | 1       |                |
| <i>Tech Note: Includes 4 ea.: R112-7494 Seals; 2 ea.: R302-5 Grease Zerks, R114-3717 Seals, R112-5290 Bearings &amp; R114-3745 Locknuts:</i>                  |                     |                       |                                      |         |                |
| 16  | <b>R106-9606</b>    | 106-9606              | Overhaul Kit - Roller                | 1       |                |
| <i>Tech Note: Include 2 ea: R343667 Bearings, R253-70 Seals, R32120-62 Retaining Rings, R93-1251 Seals, R93-1252 Seals, R93-2931 Washers, R93-3007 Seals:</i> |                     |                       |                                      |         |                |
| <b>Other Parts Available</b>  |                     |                       |                                      |         |                |
| 20  | <b>R107-2996</b>    | 107-2996              | Grass Shield - Front                 | 1       |                |
| 21  | <b>R107-7777-01</b> | 107-7777-01           | Grass Shield Assy - Rear             | 1       |                |

All original equipment manufacturers names and part numbers are used for identification purposes only, and we are in no way implying that our products are original equipment parts. Prices subject to change without notice.



# Replaces Toro Reelmaster 5410G Parts

Verti-Cut Unit - Model 03664

Verti-Cut Reel & Frame



| Item No | R&R Part No.        | OEM Part No.  | Description                    | Qty Req | Order Quantity |
|---------|---------------------|---|--------------------------------|---------|----------------|
| 22      | <b>R107-2951</b>    | 107-2951  | Frame                          | 1       |                |
| 23      | <b>R106-3937</b>    | 106-3937  | Carrier Frame Assy             | 1       |                |
| 24      | <b>R110-9628</b>    | 110-9628  | LH Side Plate Assy             | 1       |                |
| 25      | <b>R110-9629</b>    | 110-9629  | RH Side Plate Assy             | 1       |                |
| 26      | <b>R107-2999</b>    | 107-2999  | Scraper - Rear Roller          | 1       |                |
| 27      | <b>R108-4475-03</b> | 108-4475-03   | Scraper - Full Front 2.5 in    | 1       |                |
| 29      | <b>R108-9090-01</b> | 108-9090-01   | Weight                         | 1       |                |
| 30      | <b>R108-4959</b>    | 108-4959  | Rod - Turf Tension             | 1       |                |
| 31      | <b>R92-2762</b>     | 92-2762   | Pin - Snap                     | 1       |                |
| 33      | <b>R3231-25</b>     | 01-173-0610,<br>30-9970,<br>3231-25,<br>3231-3,<br>900064P  | Bolt - Carriage 3/8-16 x 1-1/4 | 4       |                |
| 34      | <b>R110-4069</b>    | 110-4069  | Bracket                        | 1       |                |
| 35      | <b>R108-4960</b>    | 108-4960  | Spring - Turf Tension          | 1       |                |
| 36      | <b>R453017</b>      | 01-166-0050,<br>01-166-0240,<br>01-166-0800,<br>24-13-AD,<br>24-14-AD,<br>32-8110,<br>3256-26,<br>3256-6,<br>453017,<br>69-8980,<br>87-7270 | Washer - Flat 1/2              | 1       |                |
| 37      | <b>R443818</b>      | 01-191-0813,<br>3218-18,<br>3218-5,<br>3248-18  | Nut - 1/2-13 Hex Jam Zinc      | 3       |                |

All original equipment manufacturers names and part numbers are used for identification purposes only, and we are in no way implying that our products are original equipment parts. Prices subject to change without notice.



# Replaces Toro Reelmaster 5410G Parts

Verti-Cut Unit - Model 03664

Verti-Cut Reel & Frame



| Item No | R&R Part No.     | OEM Part No.   | Description                      | Qty Req | Order Quantity |
|---------|------------------|--|----------------------------------|---------|----------------|
| 38      | <b>R32128-43</b> | 30-8990,<br>32128-43,<br>3290-357  | Nut - Flanged Whiz - 3/8-16      | 7       |                |
| 39      | <b>R445722</b>   | 30-8980,<br>32128-2,<br>32128-20,<br>32128-20,<br>445722   | Nut - Serrated Washer            | 6       |                |
| 40      | <b>R99-8662</b>  | 99-8662  | Tube - Spring                    | 1       |                |
| 41      | <b>R104-8301</b> | 104-8301,<br>104-9301,<br>109-6658,<br>133-7570  | Locknut - 3/8-16 Nylon Flanged   | 13      |                |
| 42      | <b>R93-2877</b>  | 93-2877  | Bushing - Flanged                | 2       |                |
| 43      | <b>R108-4279</b> | 108-4279   | Spacer - Frame                   | 2       |                |
| 44      | <b>R108-4284</b> | 108-4284   | Shaft - Support                  | 1       |                |
| 45      | <b>R3234-5</b>   | 3234-5,<br>62-3310   | Bolt - 5/16-18x3/4 Hx Ser Was HD | 4       |                |
| 46      | <b>R93-6688</b>  | 93-6688  | Decal - Warning                  | 1       |                |
| 47      | <b>R108-4961</b> | 108-4961   | Tab - Stop - Shield              | 1       |                |
| 48      | <b>R110-4058</b> | 110-4058   | Bracket - Chain                  | 1       |                |
| 49      | <b>R101526</b>   | 01-150-0970,<br>01-178-0620,<br>101526,<br>20-53-AGD,<br>321-11,<br>3224-8,<br>323-11,<br>323-12,<br>323-31,<br>323-4,<br>323-47 | Bolt - Hex HD 3/8-16 x 2-1/2 GR5 | 2       |                |

All original equipment manufacturers names and part numbers are used for identification purposes only, and we are in no way implying that our products are original equipment parts. Prices subject to change without notice.



# Replaces Toro Reelmaster 5410G Parts

Verti-Cut Unit - Model 03664

Verti-Cut Reel & Frame



| Item No | R&R Part No.     | OEM Part No.   | Description                          | Qty Req | Order Quantity |
|---------|------------------|--|--------------------------------------|---------|----------------|
| 50      | <b>R104-8300</b> | 104-8300,<br>104-8300 ,<br>119-4041  | Locknut - 5/16-18 Flanged Y/Zinc     | 4       |                |
| 51      | <b>R107-3281</b> | 107-3281   | Bracket - Scraper - RH               | 1       |                |
| 52      | <b>R107-3279</b> | 107-3279   | Bracket - Scraper - LH               | 1       |                |
| 53      | <b>R106-3925</b> | 106-3925   | Shim - 1/4 - Rear Roller HOC         | 4       |                |
| 54      | <b>R108-4286</b> | 108-4286   | Bracket - Adj                        | 2       |                |
| 55      | <b>R106-3924</b> | 106-3924   | Bracket - Rear Roller                | 2       |                |
| 56      | <b>R107-7773</b> | 107-7773   | Bolt - Soc HD Cap 5/16-18 x<br>2-1/2 | 1       |                |
| 57      | <b>R108-4289</b> | 108-4289   | Pin - Roller Mounting                | 2       |                |
| 58      | <b>R3254-21</b>  | 3254-21  | Washer - 1 in Interal Star           | 2       |                |
| 59      | <b>R453011</b>   | 01-166-0100,<br>01-166-0120,<br>01-166-0270,<br>01-166-0500,<br>01-166-0600,<br>01-166-0620,<br>132-4593,<br>2356-3,<br>237-12,<br>24-10-AD,<br>24-11-AD,<br>24-11-BD,<br>24-12-AD,<br>24-12-BD,<br>30-9310,<br>32-8190,<br>3256-24,<br>3256-3,<br>3256-36,<br>3256-4,<br>453011,<br>47-9950,<br>48-9220,<br>513458,<br>7-0052 | Washer - Flat 3/8 SAE Y/Zinc         | 0       |                |

All original equipment manufacturers names and part numbers are used for identification purposes only, and we are in no way implying that our products are original equipment parts. Prices subject to change without notice.



# Replaces Toro Reelmaster 5410G Parts

Verti-Cut Unit - Model 03664

Verti-Cut Reel & Frame



| Item No | R&R Part No.     | OEM Part No.   | Description                      | Qty Req | Order Quantity |
|---------|------------------|--|----------------------------------|---------|----------------|
| 60      | <b>R108-4293</b> | 108-4293   | Roller - Verti-Cut               | 2       |                |
| 61      | <b>R59-2580</b>  | 59-2580  | Spacer - Wheel                   | 2       |                |
| 62      | <b>R3296-59</b>  | 3296-59  | Locknut - 3/8-16 Nylon Jam       | 2       |                |
| 63      | <b>RP17609-2</b> | 106-9758,<br>3230-7  | Bolt - Carriage 5/16-18 x 1-1/2  | 4       |                |
| 64      | <b>R237-68</b>   | 237-68   | O-Ring                           | 2       |                |
| 65      | <b>R150485</b>   | 2410-30,<br>2410-30OSS   | Cap - Protective Bearing Housing | 1       |                |
| 66      | <b>R3231-7</b>   | 3231-33,<br>3231-7   | Bolt - Carriage 3/8-16 x 2-1/4   | 2       |                |
| 67      | <b>R107-2954</b> | 107-2954   | Nut - Bearing Adjuster           | 1       |                |
| 68      | <b>R3234-11</b>  | 3234-11  | Bolt - Hex Washer HD             | 2       |                |
| 69      | <b>R3234-19</b>  | 3234-19  | Bolt - Hex Washer 3/8-16x1-3/4   | 2       |                |
| 70      | <b>R3231-4</b>   | 01-157-0440,<br>01-173-0612,<br>3231-4   | Bolt - Carriage 3/8-16 x 1-1/2   | 2       |                |
| 71      | <b>R3296-28</b>  | 119-4154,<br>140-9234,<br>32127-34,<br>32128-7,<br>32128-8,<br>32136-7,<br>3296-28 | Nut - 1/2-20 ESNA Jam            | 2       |                |
| 72      | <b>R107-2979</b> | 107-2979   | Bolt - Shoulder                  | 4       |                |
| 73      | <b>R170714</b>   | 302-34,<br>302-39,<br>62-3520  | Fitting - Pressure Relief        | 2       |                |

All original equipment manufacturers names and part numbers are used for identification purposes only, and we are in no way implying that our products are original equipment parts. Prices subject to change without notice.



# Replaces Toro Reelmaster 5410G Parts

Verti-Cut Unit - Model 03664

Verti-Cut Reel & Frame



| Item No | R&R Part No.     | OEM Part No.   | Description                   | Qty Req | Order Quantity |
|---------|------------------|--|-------------------------------|---------|----------------|
| 74      | <b>R302-5</b>    | 21-6010,<br>302-11,<br>302-37,<br>302-47,<br>302-5,<br>302-57,<br>302-58,<br>302-6,<br>31-0300,<br>32-9660,<br>60-0800,<br>62-3880,<br>92-4181 | Fitting - Grease              | 6       |                |
| 75      | <b>R93-2489</b>  | 93-2489  | Bearing - Reel                | 2       |                |
| 76      | <b>R107-4028</b> | 105-6757,<br>107-4028  | Seal - Grease                 | 2       |                |
| 77      | <b>R108-4955</b> | 108-4955   | Shaft Assy - V-Cut            | 1       |                |
| 78      | <b>R17-1580</b>  | 17-1580  | Spacer - V-Cut Reel 1/2       | 1       |                |
| 79      | <b>R108-4994</b> | 108-4994   | Spacer - 1/4 in - V-Cut Shaft | 1       |                |
| 80      | <b>R108-4957</b> | 108-4957   | Insert-LH - Verticut          | 1       |                |
| 81      | <b>R112-7451</b> | 100-9429,<br>112-7451  | Bolt - Hex Tap 3/8-16 x 2-3/4 | 2       |                |
| 82      | <b>R108-4958</b> | 108-4958   | Insert- RH - Verticut         | 1       |                |
| 83      | <b>R322-16</b>   | 322-16,<br>Apr-00  | Bolt - Hex HD 5/16-18 x 1-1/8 | 2       |                |
| 84      | <b>R107-2952</b> | 107-2952   | Bracket - Front Roller        | 2       |                |
| 85      | <b>R322-14</b>   | 01-150-0830,<br>01-178-0524,<br>30-8900,<br>322-14   | Bolt - Hex HD 5/16-18 x 3 GR5 | 1       |                |
| 86      | <b>R3256-74</b>  | 3256-74  | Washer - Flat                 | 1       |                |

All original equipment manufacturers names and part numbers are used for identification purposes only, and we are in no way implying that our products are original equipment parts. Prices subject to change without notice.



# Replaces Toro Reelmaster 5410G Parts

Verti-Cut Unit - Model 03664

Verti-Cut Reel & Frame



| Item No | R&R Part No.     | OEM Part No.                                       | Description                         | Qty Req | Order Quantity |
|---------|------------------|--|-------------------------------------|---------|----------------|
| 87      | <b>R3220-18</b>  | 3220-18,<br>67-5840                                | Nut - Jam V-Cut Shaft               | 1       |                |
| 88      | <b>R82-6600</b>  | 82-6600  | Spacer - V-Cut                      | 24      |                |
| 89      | <b>R104-3396</b> | 104-3396   | Bolt - Hex HD 3/8-16 x 2-1/4        | 1       |                |
| 90      | <b>R106-4214</b> | 106-4214   | Set Screw - 1/4-20 x 1/2 Cone Point | 1       |                |
| 91      | <b>R114-3745</b> | 114-3745,<br>114-5411                              | Locknut - Bearing - Stainless       | 3       |                |
| 92      | <b>R112-7494</b> | 112-7494   | Seal                                | 6       |                |
| 93      | <b>R112-5290</b> | 112-5290,<br>251--346,<br>251-346,<br>72-5430      | Bearing - Stainless                 | 3       |                |
| 94      | <b>R114-3717</b> | 114-3717   | Seal                                | 3       |                |
| 95      | <b>R114-5407</b> | 114-5407   | Shaft - Long Rear Roller            | 1       |                |
| 96      | <b>R110-4053</b> | 110-4053   | Shaft - Front Roller                | 1       |                |
| 97      | <b>R453013</b>   | 01-166-0140,<br>01-166-0700,<br>3256-5,<br>80-4850 | Washer - Flat 7/16                  | 4       |                |
| 98      | <b>R93-3007</b>  | 93-3007  | Seal                                | 1       |                |
| 99      | <b>R343667</b>   | 109966,<br>251-6,<br>38-7820                       | Bearing - Ball                      | 1       |                |
| 100     | <b>R93-1251</b>  | 93-1251  | Seal                                | 1       |                |
| 101     | <b>R93-1252</b>  | 93-1252  | Seal - Outer                        | 1       |                |
| 102     | <b>R253-70</b>   | 253-70   | Seal                                | 1       |                |
| 103     | <b>R93-2931</b>  | 93-2931  | Washer - Roller Seal                | 1       |                |

All original equipment manufacturers names and part numbers are used for identification purposes only, and we are in no way implying that our products are original equipment parts. Prices subject to change without notice.





# Replaces Toro Reelmaster 5410G Parts

*Verti-Cut Unit - Model 03664*

*Verti-Cut Reel & Frame*



| Item No | R&R Part No.     | OEM Part No.         | Description              | Qty Req | Order Quantity |
|---------|------------------|----------------------|--------------------------|---------|----------------|
| 104     | <b>R32120-62</b> | 32120-62             | Ring - Retaining         | 1       |                |
| 105     | <b>R107-3296</b> | 107-3296,<br>99-5717 | Shaft - Rear Long Roller | 1       |                |

All original equipment manufacturers names and part numbers are used for identification purposes only, and we are in no way implying that our products are original equipment parts. Prices subject to change without notice.