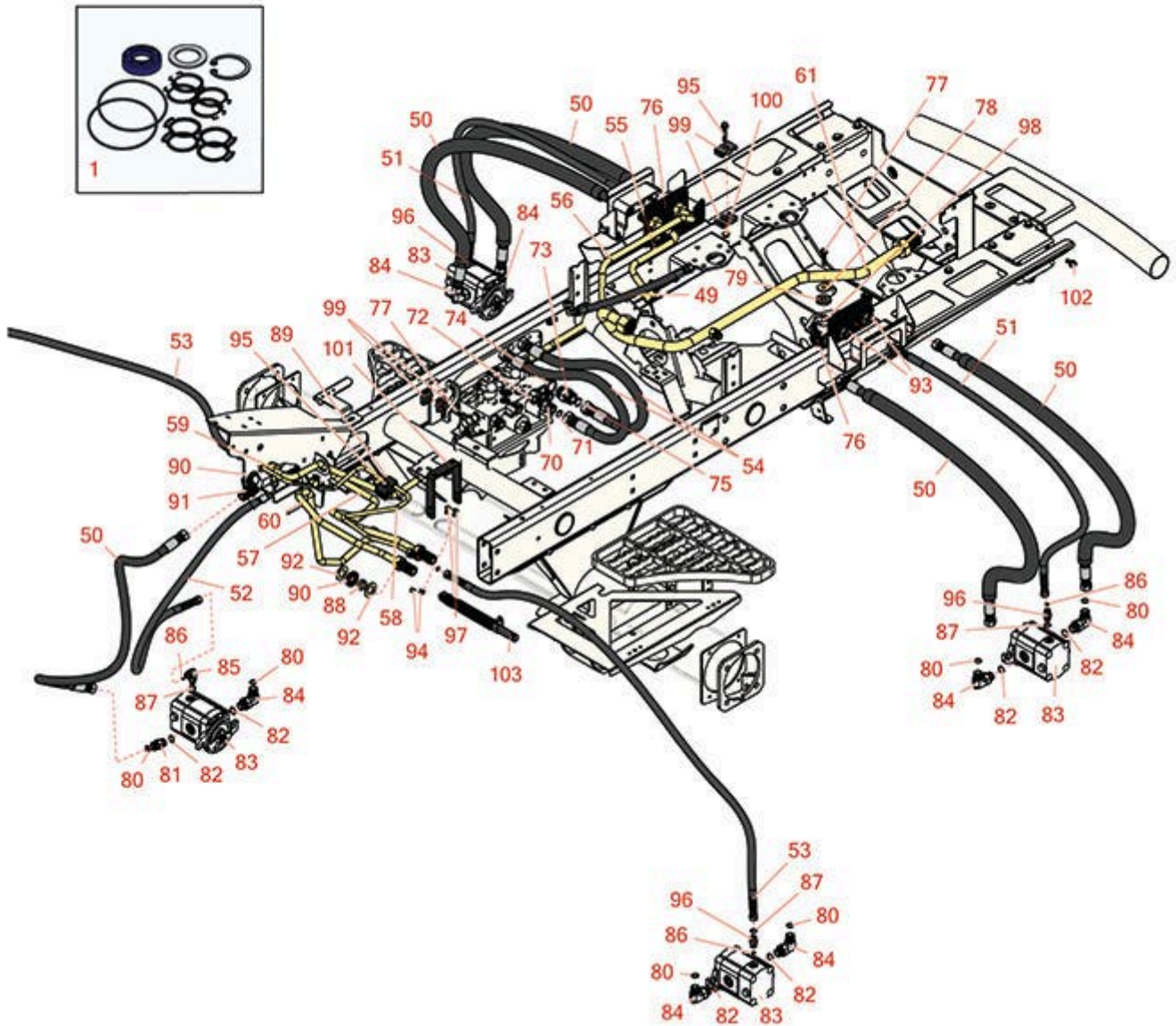




# Replaces Toro Reelmaster 5410G Parts

*Traction Unit - Models 03608 & 03673*

*Reel Hydraulics*



All original equipment manufacturers names and part numbers are used for identification purposes only, and we are in no way implying that our products are original equipment parts. Prices subject to change without notice.



# Replaces Toro Reelmaster 5410G Parts

*Traction Unit - Models 03608 & 03673*

*Reel Hydraulics*



Item No	R&R Part No.	OEM Part No.	Description	Qty Req	Order Quantity
---------	--------------	--------------	-------------	---------	----------------

## Overhaul Kits and Service Tools

1	<b>R112-9184</b>	112-9184	Seal Kit - Fits Toro and Turolla R112-9200 Motor	1	
---	------------------	----------	--	---	--

## Hoses

49	<b>R66-8490</b>	66-8490	Hydraulic Hose Assy	1	
50	<b>R114-0633</b>	114-0633	Hydraulic Hose Assy	1	
52	<b>R106-3671</b>	106-3671	Hydraulic Hose Assy	1	
51	<b>R117-5190</b>	117-5190	Hydraulic Hose Assy	1	
53	<b>R106-3680</b>	106-3680	Hose	1	
54	<b>R108-1686</b>	108-1686	Hydraulic Hose Assy	2	
55	<b>R117-0140</b>	117-0140	Tube Assy	1	
56	<b>R117-0141</b>	117-0141	Tube Assy	1	
57	<b>R117-0137</b>	117-0137	Tube Assy	1	
58	<b>R110-5286</b>	110-5286	Tube Assy	1	
59	<b>R117-0139</b>	117-0139	Tube Assy - Hyd	1	
60	<b>R117-0138</b>	117-0138	Tube Assy	1	
61	<b>R108-1699</b>	108-1699	Tube Assy	1	

## Other Parts Available

70	<b>R340-7</b>	340-7	Adapter	2	
71	<b>R237-65</b>	237-65, 237.65	O-Ring	1	
72	<b>R237-80</b>	237-80, 327-80	O-Ring	1	
73	<b>R340-9</b>	340-9	Fitting - Straight Connector	1	

All original equipment manufacturers names and part numbers are used for identification purposes only, and we are in no way implying that our products are original equipment parts. Prices subject to change without notice.



# Replaces Toro Reelmaster 5410G Parts

*Traction Unit - Models 03608 & 03673*

*Reel Hydraulics*



Item No	R&R Part No.	OEM Part No.	Description	Qty Req	Order Quantity
74	<b>R237-81</b>	237-81, 237.81, 327-81	O-Ring	1	
75	<b>R237-58</b>	237-58	O-Ring	1	
76	<b>R117-0174-03</b>	117-0174-03	Bracket-Bulkhead	2	
77	<b>R32144-57</b>	32144-57	Bolt - Hex Washer 5/16-18 x 1-1/2	4	
78	<b>R105-3048</b>	105-3048	Washer - Flat	4	
79	<b>R240-11</b>	240-11	Bushing - Rubber - Flanged	8	
80	<b>R237-30</b>	23-6320, 237-30	O-Ring - Seal	4	
81	<b>R340-4</b>	340-4	Hydraulic Fitting - Male Connector	1	
82	<b>R237-79</b>	237-79	O-Ring	10	
83	<b>R120-2072</b>	100-6426, 108-6487, 112-9200, 120-2072, 93-1375	Hydraulic Gear Motor	3	
84	<b>R340-98</b>	340-98	Hydraulic Fitting	9	
85	<b>R340-132</b>	340-132	Hydraulic Fitting - 90 Deg	1	
86	<b>R237-21</b>	237-21, 327-21	O-Ring	1	
87	<b>R237-22</b>	107-8844, 237-22, 237-78	O-Ring	5	
88	<b>R69-8960</b>	69-8960	Spacer	5	
<i>Tech Note: Fits 2006-2009:</i>					
89	<b>R56-7970</b>	56-7970	Plastic Clamp	2	

All original equipment manufacturers names and part numbers are used for identification purposes only, and we are in no way implying that our products are original equipment parts. Prices subject to change without notice.



# Replaces Toro Reelmaster 5410G Parts

Traction Unit - Models 03608 & 03673

Reel Hydraulics



Item No	R&R Part No.	OEM Part No.	Description	Qty Req	Order Quantity
<i>Tech Note: Fits 2010 &amp; Up:</i>					
90	<b>R240-3</b>	240-3	Grommet- Rubber	5	
<i>Tech Note: Fits 2010 &amp; Up:</i>					
91	<b>R340-72</b>	340-72, 96-0865	Fitting-Bulkhead,	1	
<i>Tech Note: Fits 2010 &amp; Up:</i>					
92	<b>R69-9010</b>	69-9010, 9-9010	Washer	6	
<i>Tech Note: Fits 2006-2009:</i>					
93	<b>R340-74</b>	340-74	Locknut - Bulkhead	4	
<i>Tech Note: Fits 2006-2009:</i>					
94	<b>R104-7201</b>	104-7201	Locknut - 1/4-20 ESNA Flanged	4	
95	<b>R115-1794</b>	115-1794	Bolt - Hx HD Fl 5/16-18 x 1 1/2	1	
96	<b>R340-92</b>	340-92	Hydraulic Fitting - Striaight	1	
97	<b>R3229-1</b>	01-173-0406, 01-178-0408, 3229-1, 3229-25, 900015P	Bolt - 1/4-20 x 3/4 - Carriage	4	
98	<b>R99-8611</b>	99-8611	Spacer	4	
99	<b>R56-7971</b>	56-7971	Clamp - Tube	2	
100	<b>R104-8300</b>	104-8300, 104-8300 , 119-4041	Locknut - 5/16-18 Flanged Y/Zinc	2	
101	<b>R108-1799-03</b>	108-1799-03	Hoop-Guard	1	
102	<b>R3234-5</b>	3234-5, 62-3310	Bolt - 5/16-18x3/4 Hx Ser Was HD	2	

All original equipment manufacturers names and part numbers are used for identification purposes only, and we are in no way implying that our products are original equipment parts. Prices subject to change without notice.



# Replaces Toro Reelmaster 5410G Parts

*Traction Unit - Models 03608 & 03673*

*Reel Hydraulics*



Item No	R&R Part No.	OEM Part No.	Description	Qty Req	Order Quantity
103	<b>R76-8870</b>	105-7280, 76-8870	Lever Damper Assy	1	

All original equipment manufacturers names and part numbers are used for identification purposes only, and we are in no way implying that our products are original equipment parts. Prices subject to change without notice.