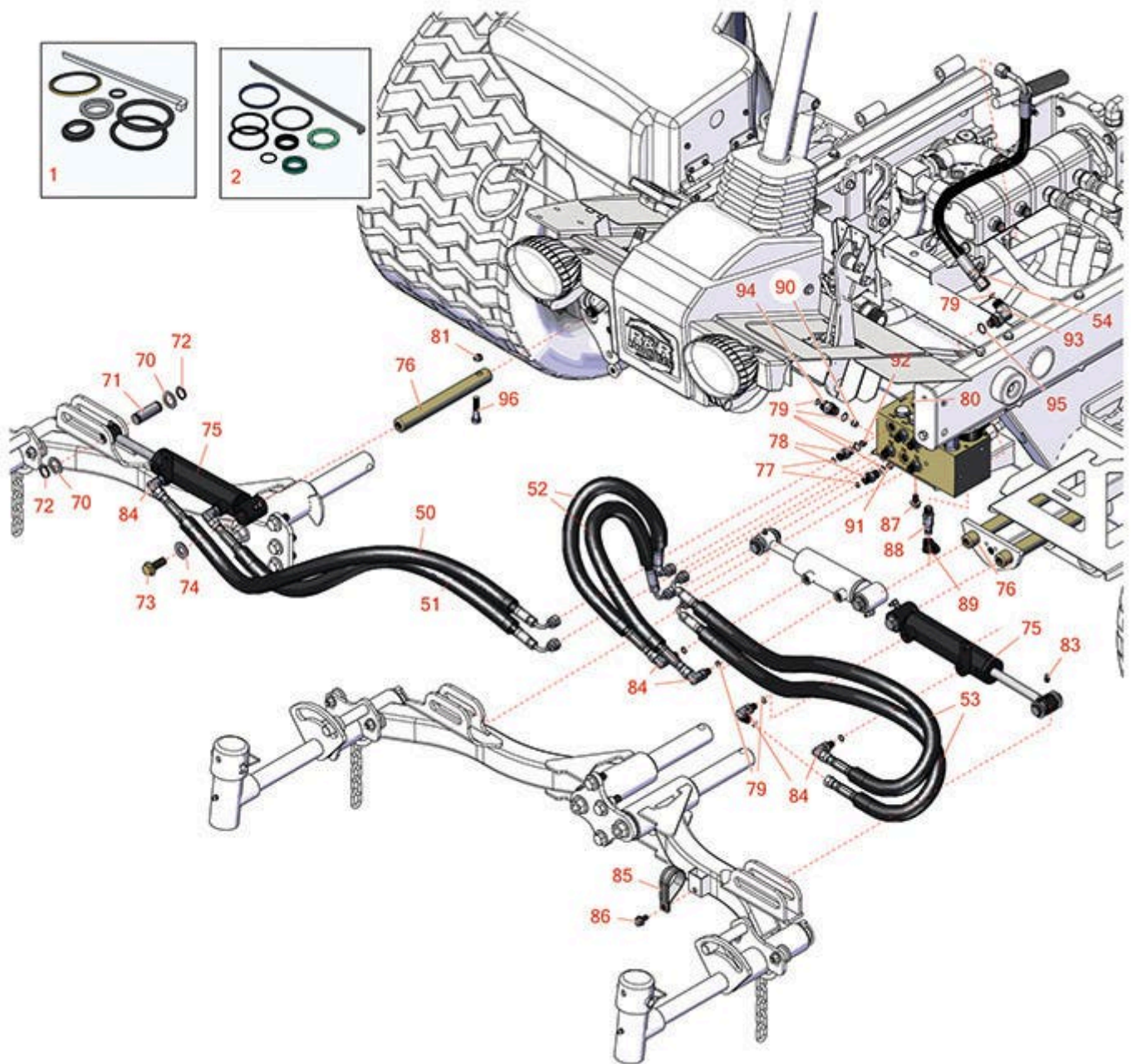




Replaces Toro Reelmaster 5410G Parts

Traction Unit - Models 03608 & 03673

Front Lift Cylinder & Plumbing



All original equipment manufacturers names and part numbers are used for identification purposes only, and we are in no way implying that our products are original equipment parts. Prices subject to change without notice.



Replaces Toro Reelmaster 5410G Parts

Traction Unit - Models 03608 & 03673

Front Lift Cylinder & Plumbing



Item No	R&R Part No.	OEM Part No.	Description	Qty Req	Order Quantity
Overhaul Kits					
1	R110-6460	110-6460	Seal Kit	1	
2	R119-6992	119-6992	Seal Kit - Fits R119-6987 & R119-6988 Cylinder	1	
Hoses					
50	R106-3692	106-3692	Hydraulic Hose Assy	1	
51	R106-3693	106-3693	Hydraulic Hose Assy	1	
52	R93-6887	93-6887	Hydraulic Hose Assy	2	
53	R85-4940	85-4940	Hydraulic Hose Assy	2	
54	R92-5694	92-5694	Hydraulic Hose Assy	1	
Other Parts Available					
70	R3-6498	3--6498, 3-6498, 47-8270	Washer - Thrust	6	
71	R104-0046	104-0046	Pin - Slide - Cylinder	3	
72	R32120-93	32120-93	Snap Ring - HD	6	
73	R3234-32	3234-32, 3434-32	Bolt - 1/2-13 x 1 1/4 Hex Flange Bolt	6	
<i>Tech Note: 2006-2007:</i>					
73	R3234-38	3234-38	Bolt - Flanged Hex 1/2-13 x 1-1/4	6	
<i>Tech Note: 2008 & Up:</i>					

All original equipment manufacturers names and part numbers are used for identification purposes only, and we are in no way implying that our products are original equipment parts. Prices subject to change without notice.



Replaces Toro Reelmaster 5410G Parts

Traction Unit - Models 03608 & 03673

Front Lift Cylinder & Plumbing



Item No	R&R Part No.	OEM Part No.	Description	Qty Req	Order Quantity
74	R453017	01-166-0050, 01-166-0240, 01-166-0800, 24-13-AD, 24-14-AD, 32-8110, 3256-26, 3256-6, 453017, 69-8980, 87-7270	Washer - Flat 1/2	3	
75	R107-2033	107-2033, 110-9033	Hydraulic Cylinder	2	
76	R107-2077	107-2077	Pin - Cylinder	3	
76	R117-0148	117-0148	Pin - Hyd Cyl	3	
77	R237-21	237-21, 327-21	O-Ring	12	
78	R340-92	340-92	Hydraulic Fitting - Striaight	6	
79	R237-22	107-8844, 237-22, 237-78	O-Ring	13	
80	R105-7577	105-7577	Manifold Assy - Lift Blocks	1	
81	R3296-59	3296-59	Locknut - 3/8-16 Nylon Jam	3	
83	R302-5	21-6010, 302-11, 302-37, 302-47, 302-5, 302-57, 302-58, 302-6, 31-0300, 32-9660, 60-0800, 62-3880, 92-4181	Fitting - Grease	3	

All original equipment manufacturers names and part numbers are used for identification purposes only, and we are in no way implying that our products are original equipment parts. Prices subject to change without notice.



Replaces Toro Reelmaster 5410G Parts

Traction Unit - Models 03608 & 03673

Front Lift Cylinder & Plumbing



Item No	R&R Part No.	OEM Part No.	Description	Qty Req	Order Quantity
84	R340-132	340-132	Hydraulic Fitting - 90 Deg	6	
85	R2412-137	2412-137	Clamp-R, Double	1	
86	R32144-14	32104-32, 32104-49, 32144-14	Bolt - Hex Washer 5/16-18 x 5/8	1	
87	R3234-14	3234-14, 3234-23	Bolt - Hex Serrated Washer HD	2	
88	R59-7410	59-7410	Tip-Nipple	1	
89	R354-79	354-79	Cap-Dust	1	
90	R110-8902	110-8902	Orifice-Control, F	2	
91	R110-8903	110-8903	Orifice-Control, F	3	
92	R110-8904	110-8904	Orifice-Control, F	3	
93	R340-18	340-18	Hydraulic Fitting	1	
94	R340-88	340-88	Connector - Male	2	
95	R237-79	237-79	O-Ring	1	
96	R323-9	01-150-0190, 01-150-1540, 01-178-0614, 107229, 20-50-AD, 20-50-AGD, 30-9430, 32105-4, 3224-5, 323-9, 513363, 513364, 5377, 908037P	Bolt - Hex HD 3/8-16 x 1-3/4	3	

All original equipment manufacturers names and part numbers are used for identification purposes only, and we are in no way implying that our products are original equipment parts. Prices subject to change without notice.