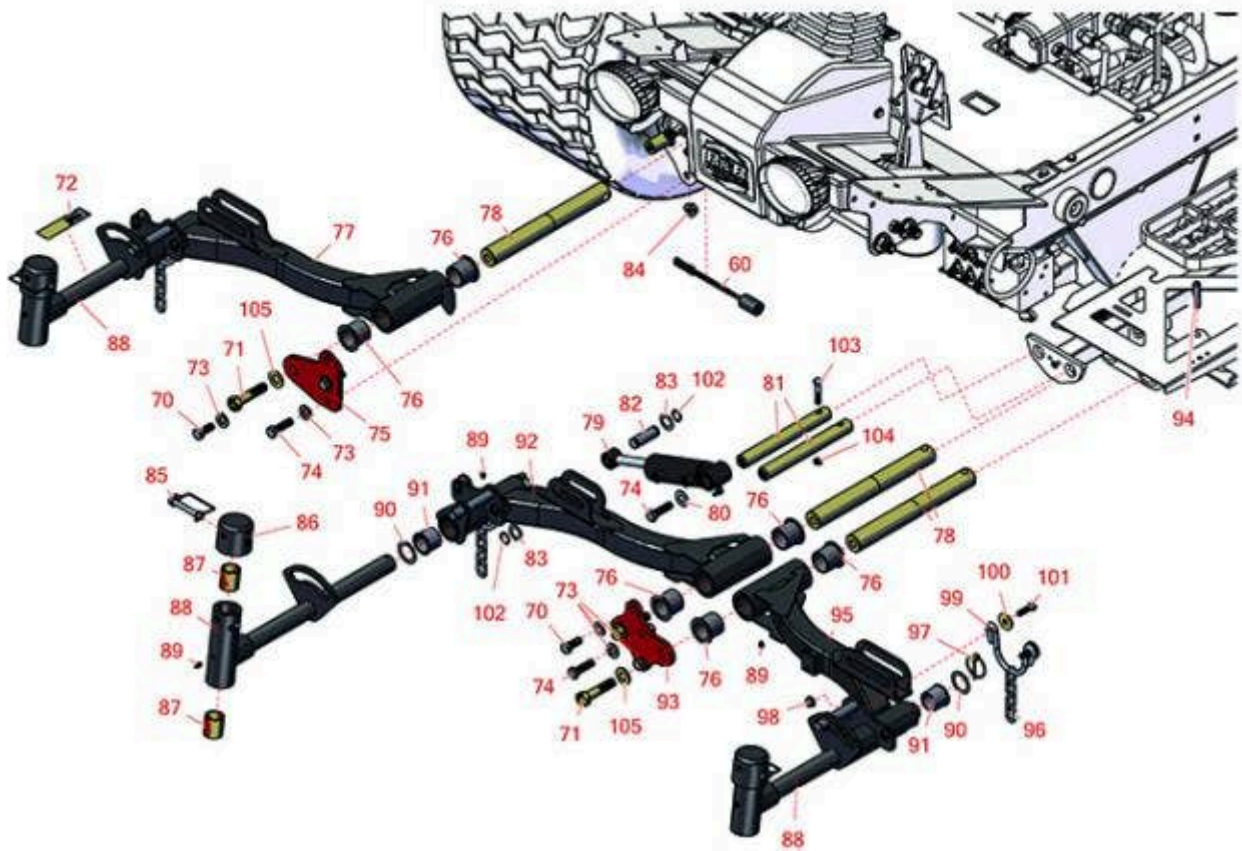
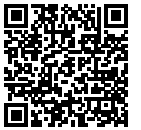




Replaces Toro Reelmaster 5410G Parts

Traction Unit - Models 03608 & 03673

Front Lift Arm



All original equipment manufacturers names and part numbers are used for identification purposes only, and we are in no way implying that our products are original equipment parts. Prices subject to change without notice.



Replaces Toro Reelmaster 5410G Parts

Traction Unit - Models 03608 & 03673

Front Lift Arm



Item No	R&R Part No.	OEM Part No.	Description	Qty Req	Order Quantity
---------	--------------	--------------	-------------	---------	----------------

Gauges and Controls

60	R105-0023	105-0023	Sensor - Proximity	1	
----	------------------	----------	--------------------	---	--

Tech Note: 2006-2009:

Other Parts Available

70	R325-5	01-150-0250, 01-178-0810, 19-8000, 20-86-AGD, 3226-1, 325-5, 513375	Bolt - Hex HD 1/2-13 x 1-1/4	2	
----	---------------	---	------------------------------	---	--

Tech Note: 2010 & Up:

71	R327-7	01-150-0700, 01-150-0710, 01-178-1020, 20-125-AGD, 20-126-AGD, 327-7	Bolt - Hx HD	3	
----	---------------	---	--------------	---	--

72	R110-9642	110-9642	Decal	1	
----	------------------	----------	-------	---	--

73	R87-7270-01	87-7270, 87-7270-01	Washer - Flat 1/2	6	
----	--------------------	------------------------	-------------------	---	--

74	R325-7	01-150-0380, 01-178-0814, 3226-3, 325-7, 48-9490	Bolt - 1/2-13 x 1 3/4 Hex HD Gr 5	4	
----	---------------	--	-----------------------------------	---	--

Tech Note: 2010 & Up:

74	R3234-38	3234-38	Bolt - Flanged Hex 1/2-13 x 1-1/4	7	
----	-----------------	---------	-----------------------------------	---	--

Tech Note: 2006-2009:

75	R117-5153-01	117-5153-01	Plate-Bridge 5	1	
----	---------------------	-------------	----------------	---	--

75	R110-0939-01	110-0939-01	Plate - Bridge - 5	1	
----	---------------------	-------------	--------------------	---	--

All original equipment manufacturers names and part numbers are used for identification purposes only, and we are in no way implying that our products are original equipment parts. Prices subject to change without notice.



Replaces Toro Reelmaster 5410G Parts

Traction Unit - Models 03608 & 03673

Front Lift Arm



Item No	R&R Part No.	OEM Part No.	Description	Qty Req	Order Quantity
76	R69-6470	69-6470	Bushing - Flanged	6	
77	R110-0995	110-0995	Lift Arm - No. 5	1	
78	R117-0208	117-0208	Shaft- Pivot - Lift Arm	3	
78	R95-8531	95-8531	Pivot Shaft	3	
<i>Tech Note: 2006-2009:</i>					
79	R119-6988	119-6988	Hydraulic Cylinder	1	
80	R453017	01-166-0050, 01-166-0240, 01-166-0800, 24-13-AD, 24-14-AD, 32-8110, 3256-26, 3256-6, 453017, 69-8980, 87-7270	Washer - Flat 1/2	3	
81	R117-0148	117-0148	Pin - Hyd Cyl	3	
82	R104-0046	104-0046	Pin - Slide - Cylinder	3	
83	R3-6498	3--6498, 3-6498, 47-8270	Washer - Thrust	6	
84	R301504	2296-42, 301504, 32127-24, 32128-33, 32146-17, 3296-16, 3296-42, 3296-42 , 915661P	Locknut - ESNA 1/4-20	4	
85	R107-7400	107-7400	Pin - Lynch	3	
86	R107-4027	107-4027	Cap - Pivot Yoke	3	

All original equipment manufacturers names and part numbers are used for identification purposes only, and we are in no way implying that our products are original equipment parts. Prices subject to change without notice.



Replaces Toro Reelmaster 5410G Parts

Traction Unit - Models 03608 & 03673

Front Lift Arm



Item No	R&R Part No.	OEM Part No.	Description	Qty Req	Order Quantity
87	R256-254	256-254	Bushing 1-1/8 x 1.375 x 1.5	6	
88	R107-2052	107-2052, 138-1248	Pivot Yoke Assy	3	
89	R302-5	21-6010, 302-11, 302-37, 302-47, 302-5, 302-57, 302-58, 302-6, 31-0300, 32-9660, 60-0800, 62-3880, 92-4181	Fitting - Grease	9	
90	R76-2980	76-2980	Washer - Thrust	6	
91	R104-0015	104-0015, 104-8339	Bushing - Flanged	6	
92	R110-0991	110-0991	Lift Arm - No. 1	1	
93	R117-5154-01	117-5154-01	Plate-Bridge 1 and 4	1	
94	R32121-122	01-153-0140, 32121-122	Pin - Roll 1/2 x 2	3	
95	R114-8874	114-8874	Lift Arm - No. 4	1	
96	R84-2450	84-2450	Chain - Straight 4	3	
97	R92-1298	92-1298	Pin - Klik	3	
98	R104-8301	104-8301, 104-9301, 109-6658, 133-7570	Locknut - 3/8-16 Nylon Flanged	6	
99	R110-0922	110-0922	Hoop - Chain	3	

All original equipment manufacturers names and part numbers are used for identification purposes only, and we are in no way implying that our products are original equipment parts. Prices subject to change without notice.



Replaces Toro Reelmaster 5410G Parts

Traction Unit - Models 03608 & 03673

Front Lift Arm



Item No	R&R Part No.	OEM Part No.	Description	Qty Req	Order Quantity
100	R63-8410	53-6380, 63-4810, 63-8410	Washer - Isolator Bushing	6	
101	R400264	01-150-0180, 01-178-0610, 20-48-AD, 20-48-AGD, 32-9160, 3224-3, 323-29, 323-7, 400264, 908035P	Bolt - Hex HD 3/8-16 x 1-1/4	6	
102	R32120-93	32120-93	Snap Ring - HD	6	
103	R323-9	01-150-0190, 01-150-1540, 01-178-0614, 107229, 20-50-AD, 20-50-AGD, 30-9430, 32105-4, 3224-5, 323-9, 513363, 513364, 5377, 908037P	Bolt - Hex HD 3/8-16 x 1-3/4	3	
104	R3296-59	3296-59	Locknut - 3/8-16 Nylon Jam	3	
105	R99-7667	99-7667	Washer - Flat 5/8	3	

All original equipment manufacturers names and part numbers are used for identification purposes only, and we are in no way implying that our products are original equipment parts. Prices subject to change without notice.