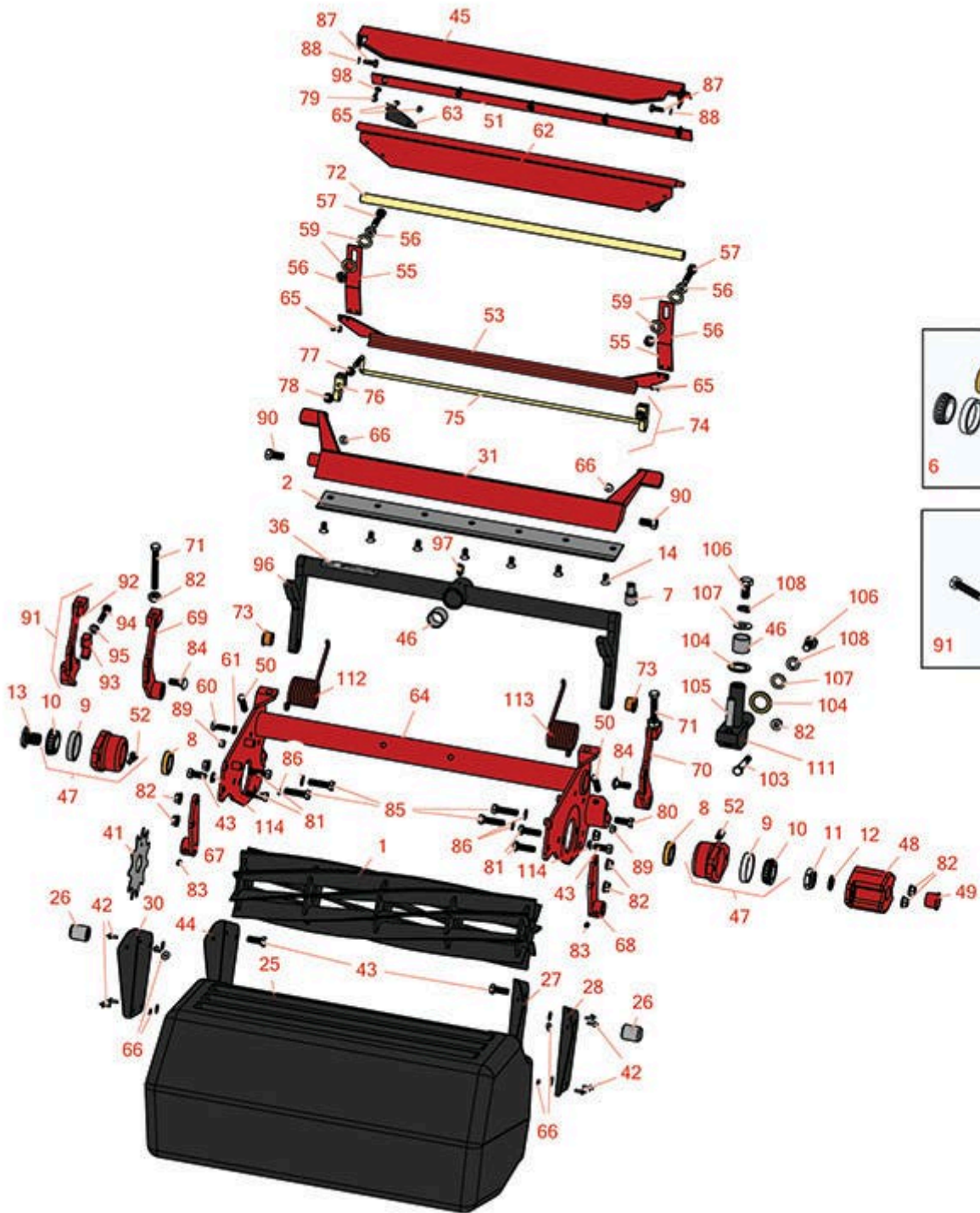




Replaces Toro Reelmaster 5300-D Parts

Cutting Unit - Models 03506 & 03509
Reel & Bedknife



All original equipment manufacturers names and part numbers are used for identification purposes only, and we are in no way implying that our products are original equipment parts. Prices subject to change without notice.



Replaces Toro Reelmaster 5300-D Parts

Cutting Unit - Models 03506 & 03509

Reel & Bedknife



| Item No | R&R Part No. | OEM Part No. | Description | Qty Req | Order Quantity |
|---------|--------------|--------------|-------------|---------|----------------|
|---------|--------------|--------------|-------------|---------|----------------|

R&R Reels, Lifetime Guaranteed

| | | | | | |
|---|------------------|---------------------|---|---|--|
| 1 | R14-0659 | 14-0659, 57-5300 | Reel - 5 Blade Heavy Duty | 1 | |
| 1 | R14-0649 | 14-0649 | Reel - 8 Blade Heavy Duty | 1 | |
| 2 | R63-8610 | 63-8610 | Bedknife - Fairway Cut .375 - 1.00 HOC | 1 | |
| 2 | R150462 | 63-8610, 94-6396 | Bedknife - 7 Hole Thick 5/16 | 1 | |
| 2 | R150464 | | Bedknife - Super Thick 7/16 | 1 | |
| 2 | R100-3350 | 100-3350 | Bedknife - High Cut | 1 | |

Overhaul Kits & Service Tools

| | | | | | |
|---|-----------------|----------|-----------------------------|---|--|
| 6 | R255-300 | 107-1590 | Overhaul Kit - Cutting Unit | 0 | |
| <i>Tech Note: Includes 2 ea: R253-96 Seals, R254-72 Cups, R254-94 Bearings; 1ea: R253-61 Seal, R32127-46 Locknut:</i> | | | | | |
| 7 | R51-0880 | 51-0880 | Bedknife Screw Driver Tool | 0 | |

Other Parts Available

| | | | | | |
|---|----------------|--|----------------------------|---|--|
| 8 | R253-96 | 253-96 | Seal - Oil Single Lip Reel | 2 | |
| 9 | R254-72 | 01-103-0050, 01-103-0120, 01-103-0140, 1-543508, 254-71, 254-72, 40439, 62-3340, 99-4511 | Cup - Bearing | 2 | |

All original equipment manufacturers names and part numbers are used for identification purposes only, and we are in no way implying that our products are original equipment parts. Prices subject to change without notice.



Replaces Toro Reelmaster 5300-D Parts

Cutting Unit - Models 03506 & 03509

Reel & Bedknife



| Item No | R&R Part No. | OEM Part No. | Description | Qty Req | Order Quantity |
|---------|------------------|---|--------------------------------|---------|----------------|
| 10 | R254-94 | 1-543509, 254-94, 32-8090, 32-8240, 32-9640, 40440, 62-3330 | Tapered Bearing Cone | 2 | |
| 11 | R32127-46 | 32127-46, 3296-60 | Locknut | 1 | |
| 12 | R253-61 | 253-61 | Seal - Oil Reel | 1 | |
| 13 | R10-5100 | 10-5100 | Nut - Splined 1-1/8 Long | 1 | |
| 14 | R150476 | 3-3816, 3-6462, 52-4910, 57-4910 | Screw - Bedknife 5/16-18 x 5/8 | 7 | |
| 25 | R75-4010 | 104-8219, 75-4010 | Grass Basket | 1 | |
| 26 | R75-3930 | 75-3930 | Pin - Grass Basket | 1 | |
| 27 | R75-4040 | 75-4040 | Support - Outer LH | 1 | |
| 28 | R75-4030 | 75-4030 | Support - Inner LH | 1 | |
| 30 | R75-4020 | 75-4020 | Support - RH Inner | 1 | |
| 31 | R10-4930 | 10-4930, 10-4930-01 | Bed Bar | 1 | |
| 36 | R67-7960 | 27-2890, 62-5070, 67-7960 | Decal - Warning | 1 | |
| 41 | R17-1590 | 17-1590 | Verti-Cut Blade | 37 | |
| 42 | R3269-28 | 3269-28 | Rivet - Pop Grass Basket | 10 | |

All original equipment manufacturers names and part numbers are used for identification purposes only, and we are in no way implying that our products are original equipment parts. Prices subject to change without notice.



Replaces Toro Reelmaster 5300-D Parts

Cutting Unit - Models 03506 & 03509

Reel & Bedknife



| Item No | R&R Part No. | OEM Part No. | Description | Qty Req | Order Quantity |
|---|-----------------|--|---------------------------------------|---------|----------------|
| 43 | R323-6 | 01-150-0010, 01-178-0608, 20-47-AD, 20-47-AGD, 3224-2, 323-6, 49-3510, 908034P, 908332 | Bolt - Hex HD 3/8-16 x 1 GR5 YZ | 2 | |
| 44 | R75-4050 | 75-4050 | Support - RH Outer | 1 | |
| 45 | R75-1840 | 75-1840 | Shield - Grass | 1 | |
| 46 | R67-1751 | 67-1751 | Bushing - 1-1/2 Long | 2 | |
| 46 | R67-1750 | 67-1750 | Bushing - 1 Long | 2 | |
| 47 | R10-5120 | 10-5120 | Housing - Bearing Reel | 2 | |
| <i>Tech Note: Includes R253-96 & R254-72:</i> | | | | | |
| 48 | R10-5080 | 10-5080, 10-5080-01 | End - Cap Reel Brg Housing | 1 | |
| 48 | R92-4080 | 92-4080 | Roller End - Cap Reel Bearing Housing | 1 | |
| <i>Tech Note: Includes sensor hole:</i> | | | | | |
| 49 | R12-0460 | 12-0460 | Caplug - End Cap | 1 | |
| 50 | R3243-13 | 3243-13 | Screw - Bed Bar Adjusting | 4 | |
| 51 | R36-7260 | 36-7260 | Bar - Cut Off Grass Shield | 1 | |
| 52 | R302-40 | 302-13, 302-40 | Fitting - Grease | 2 | |
| 53 | R03512 | 03512 | Scraper - Rear Roller | 1 | |
| 53 | R75-1750 | 75-1750 | Scraper - Rear Roller | 1 | |
| 55 | R75-1740 | 75-1740 | Spring - Scraper | 2 | |

All original equipment manufacturers names and part numbers are used for identification purposes only, and we are in no way implying that our products are original equipment parts. Prices subject to change without notice.



Replaces Toro Reelmaster 5300-D Parts

Cutting Unit - Models 03506 & 03509

Reel & Bedknife



| Item No | R&R Part No. | OEM Part No. | Description | Qty Req | Order Quantity |
|---------|----------------|--|------------------------------|---------|----------------|
| 56 | R3218-3 | 01-191-0616, 22-13-AJKD, 3218-3, 915236P | Nut - 3/8-16 Jam | 4 | |
| 57 | R323-50 | 323-50 | Bolt - 3/8-16 x 1-1/2 | 2 | |
| 59 | R453011 | 01-166-0100, 01-166-0120, 01-166-0270, 01-166-0500, 01-166-0600, 01-166-0620, 132-4593, 2356-3, 237-12, 24-10-AD, 24-11-AD, 24-11-BD, 24-12-AD, 24-12-BD, 30-9310, 32-8190, 3256-24, 3256-3, 3256-36, 3256-4, 453011, 47-9950, 48-9220, 513458, 7-0052 | Washer - Flat 3/8 SAE Y/Zinc | 4 | |
| 60 | R322-5 | 01-178-0508, 20-26-AD, 20-26-AGD, 30-9000, 322-5, 513341, 519755, 908019P, N/A | Bolt - Hex HD 5/16-18 x 1 | 1 | |

All original equipment manufacturers names and part numbers are used for identification purposes only, and we are in no way implying that our products are original equipment parts. Prices subject to change without notice.



Replaces Toro Reelmaster 5300-D Parts

Cutting Unit - Models 03506 & 03509

Reel & Bedknife



| Item No | R&R Part No. | OEM Part No. | Description | Qty Req | Order Quantity |
|---------|-----------------|---|------------------------------|---------|----------------|
| 61 | R3253-4 | 01-166-0110, 01-166-0510, 23-10-GD, 24-7170, 30-8520, 3253-4, 42-9850, 48-9350, 48-9360, 48-9570, 68-9420, 99-7577 | Washer - Lock 5/16 Zinc | 1 | |
| 62 | R75-1560 | 75-1560 | Deflector - Rear | 1 | |
| 63 | R75-1720 | 75-1720 | Flap - Rubber Rear Deflector | 2 | |
| 64 | R75-6660 | 75-6660 | Frame | 1 | |
| 65 | R3269-4 | 3269-3, 3269-4 | Rivet - Rear Deflector | 4 | |
| 66 | R3256-49 | 3256-49 | Washer - Flat 3/16x9/16x18GA | 14 | |
| 67 | R75-1960 | 75-1960 | Bracket - RH Front Roller | 1 | |
| 68 | R75-1980 | 75-1980 | Bracket - LH Front Roller | 1 | |
| 69 | R75-1610 | 75-1610 | Bracket - Rear HOC RH | 1 | |
| 70 | R75-1620 | 75-1620 | Bracket - Rear HOC LH | 1 | |
| 71 | R323-49 | 323-49 | Bolt - HOC 3/8-16 x 3 1/2 | 2 | |
| 72 | R75-1710 | 75-1710 | Rod - Support Cutting Unit | 1 | |
| 73 | R3-1506 | 3-1506, 75-2160, Apr-50 | Bushing - Bronze | 2 | |
| 74 | R92-3085 | 92-3085 | Scraper Assy - Roller | 1 | |
| 75 | R92-3086 | 92-3086 | Rod - Scraper | 1 | |

All original equipment manufacturers names and part numbers are used for identification purposes only, and we are in no way implying that our products are original equipment parts. Prices subject to change without notice.



Replaces Toro Reelmaster 5300-D Parts

Cutting Unit - Models 03506 & 03509

Reel & Bedknife



| Item No | R&R Part No. | OEM Part No. | Description | Qty Req | Order Quantity |
|---------|------------------|---|---------------------------------|---------|----------------|
| 76 | R92-3087 | 92-3087 | Bracket - Scraper | 2 | |
| 77 | R32128-33 | 32128-33 | Nut - 1/4-20 Flanged Serr | 2 | |
| 78 | R32128-32 | 32128-32 | Locknut - 1/4-20 Flanged | 2 | |
| 79 | R32144-73 | 104-2065, 32144-73 | Screw - Machine Hex Washer Head | 5 | |
| 80 | R323-2 | 01-178-0604, 323-2 | Bolt - Hex HD 3/8-16 x 1 | 1 | |
| 81 | R400264 | 01-150-0180, 01-178-0610, 20-48-AD, 20-48-AGD, 32-9160, 3224-3, 323-29, 323-7, 400264, 908035P | Bolt - Hex HD 3/8-16 x 1-1/4 | 4 | |
| 82 | R3296-39 | 32127-25, 32128-36, 3290-357, 3296-17, 3296-22, 3296-39, 915663P, 99-7443 | Locknut - 3/8-16 Nylon | 4 | |
| 82 | R321397 | 01-158-0480, 01-189-0616, 22-13-AJF, 22-13-AJFD, 32127-19, 32127-32, 32146-2, 32146-3, 32152-7, 32153-2, 32153-8, 3296-11, Aug-80 | Nut - 3/8-16 ESNA | 4 | |

All original equipment manufacturers names and part numbers are used for identification purposes only, and we are in no way implying that our products are original equipment parts. Prices subject to change without notice.



Replaces Toro Reelmaster 5300-D Parts

Cutting Unit - Models 03506 & 03509

Reel & Bedknife



| Item No | R&R Part No. | OEM Part No. | Description | Qty Req | Order Quantity |
|---------|--------------|---|-------------------------------|---------|----------------|
| 83 | R415521 | 32-113-AHNC, 32137-1, 3246-2, 909862P | Screw - Set - 5/16-18 x 3/8 | 4 | |
| 84 | R3231-2 | 01-157-0170, 01-173-0608, 3231-2, 3231-22, 3231-28, 900063P | Bolt - Carriage 3/8-16 x 1 | 2 | |
| 85 | R3290-316 | 3290-316, 57-3210 | Bolt - Hex Tap 3/8-16 x 1-1/2 | 2 | |
| 86 | R3255-9 | 3255-9 | Washer - Lock 3/8 Ext. Star | 6 | |
| 87 | R321-4 | 01-150-1030, 01-178-0406, 20-3-AGD, 321-4, 3222-1 | Bolt - Hex HD 1/4-20 x 3/4 | 2 | |
| 88 | R3253-3 | 01-166-0070, 01-166-0410, 23-9-GD, 24-7150, 3253-3, 3256-1, 352-167 | Washer - Lock 1/4 | 2 | |
| 89 | R301504 | 2296-42, 301504, 32127-24, 32128-33, 32146-17, 3296-16, 3296-42, 3296-42, 915661P | Locknut - ESNA 1/4-20 | 2 | |
| 90 | R315298 | 217-74, 31-1070 | Bolt - Bed Bar | 2 | |
| 91 | R150430 | | Bracket - Assy Quick Release | 1 | |

All original equipment manufacturers names and part numbers are used for identification purposes only, and we are in no way implying that our products are original equipment parts. Prices subject to change without notice.



Replaces Toro Reelmaster 5300-D Parts

Cutting Unit - Models 03506 & 03509

Reel & Bedknife



| Item No | R&R Part No. | OEM Part No. | Description | Qty Req | Order Quantity |
|---|-------------------|--|----------------------------------|---------|----------------|
| <i>Tech Note: Exclusively from R&R! This R&R bracket allows quick removal and replacement of rear rollers without removing brackets from the frame and having to reset the height of cut! Replace only L.H. bracket to use the system.:</i> | | | | | |
| 92 | R150431 | | Bracket - Only Quick Release | 1 | |
| 93 | R150432 | | Clamp - Quick Release Bkt | 1 | |
| 94 | R322-7 | 01-150-0750, 01-150-0760, 01-178-0512, 20-28-AD, 20-28-AGD, 322-7, 3223-4 | Bolt - Hex HD 5/16-18 x 1-1/2 | 1 | |
| 95 | R446136 | | Washer - Lock 5/16 Zinc | 1 | |
| 96 | R75-1600 | 75-1600 | Frame - Carrier Cutting Unit | 1 | |
| 97 | R302-60 | 302-60 | Zerk - Grease 90 Deg. | 1 | |
| 98 | R3256-14 | 24-7-BD, 32125-2, 3256-14, 3256-51, 51-2170 | Washer - 10 Flat | 5 | |
| 103 | R101526 | 01-150-0970, 01-178-0620, 101526, 20-53-AGD, 321-11, 3224-8, 323-11, 323-12, 323-31, 323-4, 323-47 | Bolt - Hex HD 3/8-16 x 2-1/2 GR5 | 2 | |
| 104 | R256-115 | 256-115 | Washer - Thrust Bronze | 11 | |
| 105 | R32121-122 | 01-153-0140, 32121-122 | Pin - Roll 1/2 x 2 | 3 | |

All original equipment manufacturers names and part numbers are used for identification purposes only, and we are in no way implying that our products are original equipment parts. Prices subject to change without notice.



Replaces Toro Reelmaster 5300-D Parts

Cutting Unit - Models 03506 & 03509

Reel & Bedknife



| Item No | R&R Part No. | OEM Part No. | Description | Qty Req | Order Quantity |
|---------|--------------|---|--------------------------|---------|----------------|
| 106 | R325-4 | 01-150-0280, 01-178-0806, 01-178-0808, 20-85-AD, 20-85-AGD, 325-1, 325-2, 325-4 | Bolt - Hex HD 1/2-13 x 1 | 6 | |
| 107 | R453017 | 01-166-0050, 01-166-0240, 01-166-0800, 24-13-AD, 24-14-AD, 32-8110, 3256-26, 3256-6, 453017, 69-8980, 87-7270 | Washer - Flat 1/2 | 6 | |
| 108 | R3253-7 | 01-166-0030, 01-166-0080, 01-166-0290, 01-166-0810, 23-13-GD, 3253-7, 48-9380 | Washer - Lock 1/2 | 6 | |
| 111 | R75-3010-03 | 75-3010-03 | Arm - Joint | 3 | |
| 112 | R83-4720-01 | 83-4720-01 | Torsion Spring - RH | 1 | |
| 113 | R83-4730-01 | 83-4730-01 | Torsion Spring - LH | 1 | |
| 114 | R3253-21 | 215-51, 30-8470, 3253-21, Jul-12 | Washer - Lock 3/8 | 2 | |

All original equipment manufacturers names and part numbers are used for identification purposes only, and we are in no way implying that our products are original equipment parts. Prices subject to change without notice.