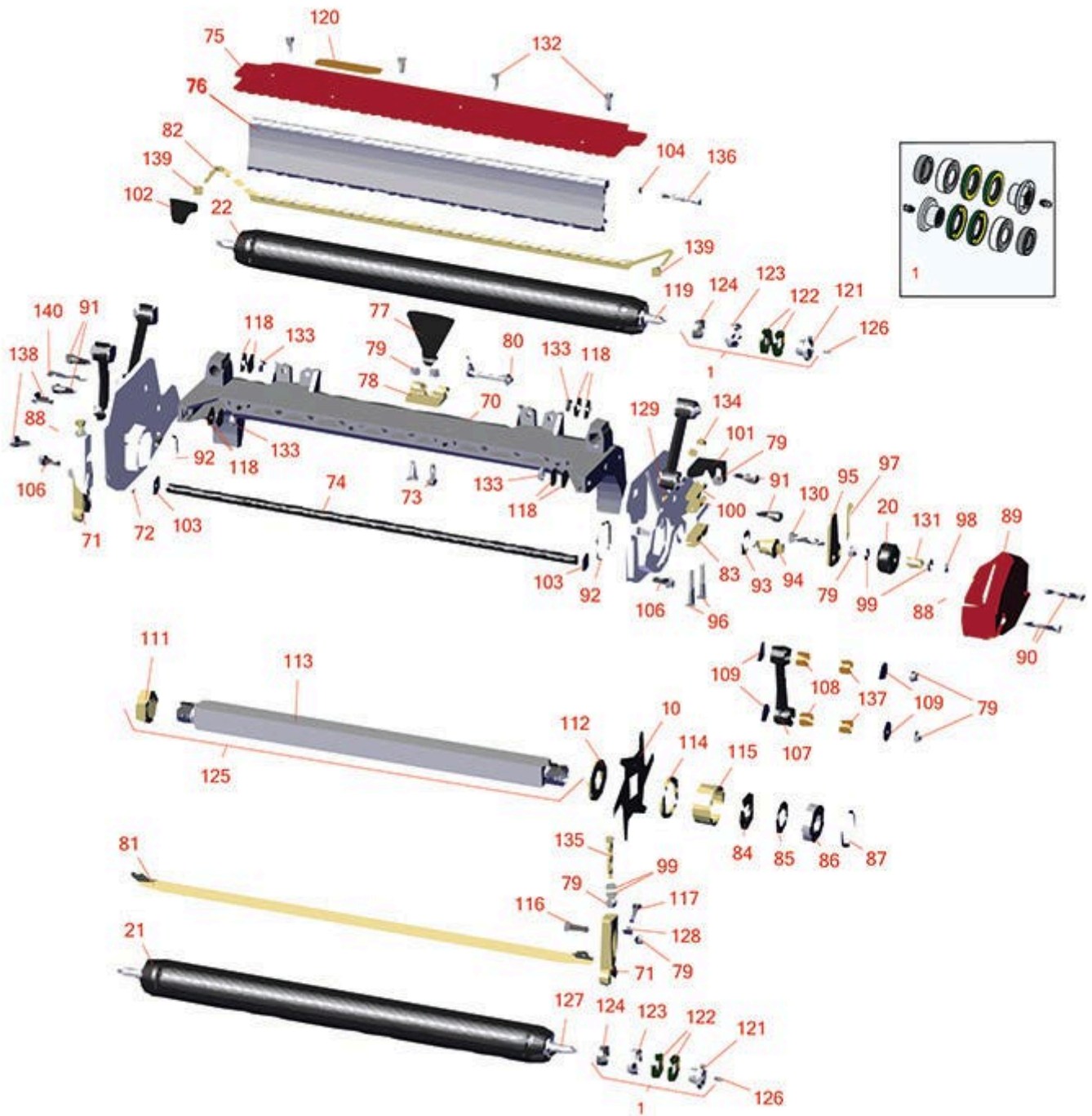




Replaces Toro Reelmaster 3100-D Parts

27in DPA Verti-Cut Unit - Model 03203

Verti-Cut Reel & Frame



All original equipment manufacturers names and part numbers are used for identification purposes only, and we are in no way implying that our products are original equipment parts. Prices subject to change without notice.



Replaces Toro Reelmaster 3100-D Parts

27in DPA Verti-Cut Unit - Model 03203

Verti-Cut Reel & Frame



| Item No | R&R Part No. | OEM Part No. | Description | Qty Req | Order Quantity |
|---------|--------------|--------------|-------------|---------|----------------|
|---------|--------------|--------------|-------------|---------|----------------|

Overhaul Kits and Service Tools

| | | | | | |
|---|------------------|----------|-----------------------|---|--|
| 1 | R114-5430 | 114-5430 | Overhaul Kit - Roller | 1 | |
|---|------------------|----------|-----------------------|---|--|

Tech Note: Includes 4 ea.: R112-7494 Seals; 2 ea.: R302-5 Grease Zerks, R114-3717 Seals, R112-5290 Bearings & R114-3745 Locknuts:

Verti-Cut Blades

| | | | | | |
|----|--------------------|------------------------|----------------------------------|----|--|
| 10 | R93-3038-03 | 93-3038, 93-3038-03 | Blade - Vertical Mower 1/16x7.25 | 19 | |
|----|--------------------|------------------------|----------------------------------|----|--|

| | | | | | |
|----|------------------|----------|---------------------|----|--|
| 10 | R106-8625 | 106-8625 | Blade - Carbide Tip | 19 | |
|----|------------------|----------|---------------------|----|--|

R&R Rollers

| | | | | | |
|----|------------------|----------|--------------------|---|--|
| 20 | R108-4293 | 108-4293 | Roller - Verti-Cut | 2 | |
|----|------------------|----------|--------------------|---|--|

| | | | | | |
|----|------------------|-----------------------|-------------------------------------|---|--|
| 21 | R117-3759 | 117-3759, 137-6124 | Roller Assy - 27" Front Solid 2 1/2 | 1 | |
|----|------------------|-----------------------|-------------------------------------|---|--|

| | | | | | |
|----|------------------|-----------------------|------------------------------------|---|--|
| 22 | R117-3756 | 117-3756, 137-6123 | Roller Assy - 27" Rear Solid 2 1/2 | 1 | |
|----|------------------|-----------------------|------------------------------------|---|--|

Other Parts Available

| | | | | | |
|----|------------------|----------|-----------------------------|---|--|
| 70 | R112-8935 | 112-8935 | Frame - Center - 27 in Unit | 1 | |
|----|------------------|----------|-----------------------------|---|--|

| | | | | | |
|----|------------------|----------|--------------------|---|--|
| 71 | R125-2796 | 125-2796 | Bracket- Front HOC | 2 | |
|----|------------------|----------|--------------------|---|--|

Tech Note: Fits 2013 & Newer:

| | | | | | |
|----|-----------------|---------|--------------------------|---|--|
| 72 | R3245-35 | 3245-35 | Screw - Set 1/4-28 x 1/4 | 1 | |
|----|-----------------|---------|--------------------------|---|--|

| | | | | | |
|----|-----------------|--|--------------------------------|---|--|
| 73 | R3231-25 | 01-173-0610, 30-9970, 3231-25, 3231-3, 900064P | Bolt - Carriage 3/8-16 x 1-1/4 | 2 | |
|----|-----------------|--|--------------------------------|---|--|

| | | | | | |
|----|------------------|----------|-----------------------------|---|--|
| 74 | R112-8936 | 112-8936 | Tube- Support - 27 in Units | 1 | |
|----|------------------|----------|-----------------------------|---|--|

| | | | | | |
|----|------------------|----------|---------------------------------------|---|--|
| 75 | R112-8942 | 112-8942 | Front Grass Shield Assy - 27 in Units | 1 | |
|----|------------------|----------|---------------------------------------|---|--|

All original equipment manufacturers names and part numbers are used for identification purposes only, and we are in no way implying that our products are original equipment parts. Prices subject to change without notice.



Replaces Toro Reelmaster 3100-D Parts

27in DPA Verti-Cut Unit - Model 03203

Verti-Cut Reel & Frame



| Item No | R&R Part No. | OEM Part No. | Description | Qty Req | Order Quantity |
|---------|---------------------|--|------------------------------------|---------|----------------|
| 76 | R125-1997 | 125-1997 | Grass Shield - Rear 27 in Unit | 1 | |
| 77 | R110-4088-03 | 110-4088-03, 119-8010-03 | Kickstand | 1 | |
| 78 | R110-4058 | 110-4058 | Bracket - Chain | 1 | |
| 79 | R104-8301 | 104-8301, 104-9301, 109-6658, 133-7570 | Locknut - 3/8-16 Nylon Flanged | 18 | |
| 80 | R107-7400 | 107-7400 | Pin - Lynch | 1 | |
| 81 | R117-3753-03 | 117-3753-03 | Scraper-Full Front Roller 2 1/2 in | 1 | |
| 82 | R117-0993 | 117-0993 | Scraper Rod Assy - 27 in | 1 | |
| 83 | R106-3924 | 106-3924 | Bracket - Rear Roller | 2 | |
| 84 | R127-4284 | 127-4284 | Washer - Special | 2 | |
| 85 | R115-3299 | 115-3299 | Seal- Flocked | 2 | |
| 86 | R115-3296 | 115-3296 | Bearing | 2 | |
| 87 | R105-5700 | 105-5700, 115-5258 | Wave Washer - Bearing | 1 | |
| 88 | R112-6967 | 112-6967 | O-Ring | 2 | |
| 89 | R119-0614-01 | 119-0614-01 | Weight | 1 | |
| 90 | R101526 | 01-150-0970, 01-178-0620, 101526, 20-53-AGD, 321-11, 3224-8, 323-11, 323-12, 323-31, 323-4, 323-47 | Bolt - Hex HD 3/8-16 x 2-1/2 GR5 | 2 | |

All original equipment manufacturers names and part numbers are used for identification purposes only, and we are in no way implying that our products are original equipment parts. Prices subject to change without notice.



Replaces Toro Reelmaster 3100-D Parts

27in DPA Verti-Cut Unit - Model 03203

Verti-Cut Reel & Frame



| Item No | R&R Part No. | OEM Part No. | Description | Qty Req | Order Quantity |
|---------|------------------|--|----------------------------------|---------|----------------|
| 91 | R107-2979 | 107-2979 | Bolt - Shoulder | 4 | |
| 92 | R117-8177 | 117-8177 | O-Ring | 2 | |
| 93 | R3254-21 | 3254-21 | Washer - 1 in Interal Star | 2 | |
| 94 | R108-4289 | 108-4289 | Pin - Roller Mounting | 2 | |
| 95 | R108-4286 | 108-4286 | Bracket - Adj | 2 | |
| 96 | R3230-7 | 25-33-AGD, 3230-9 | Bolt - Carriage 5/16-18 x 2 1/2 | 2 | |
| 97 | R3290-355 | 01-159-0050, 3290-355, 58-5370 | Pin - Bridge - Snap | 2 | |
| 98 | R3296-59 | 3296-59 | Locknut - 3/8-16 Nylon Jam | 2 | |
| 99 | R453011 | 01-166-0100, 01-166-0120, 01-166-0270, 01-166-0500, 01-166-0600, 01-166-0620, 132-4593, 2356-3, 237-12, 24-10-AD, 24-11-AD, 24-11-BD, 24-12-AD, 24-12-BD, 30-9310, 32-8190, 3256-24, 3256-3, 3256-36, 3256-4, 453011, 47-9950, 48-9220, 513458, 7-0052 | Washer - Flat 3/8 SAE Y/Zinc | 8 | |
| 100 | R119-0626 | 119-0626 | Shim - Roller - 1/4 in - Slotted | 4 | |

All original equipment manufacturers names and part numbers are used for identification purposes only, and we are in no way implying that our products are original equipment parts. Prices subject to change without notice.



Replaces Toro Reelmaster 3100-D Parts

27in DPA Verti-Cut Unit - Model 03203

Verti-Cut Reel & Frame



| Item No | R&R Part No. | OEM Part No. | Description | Qty Req | Order Quantity |
|---------|------------------|--|--|---------|----------------|
| 101 | R107-3279 | 107-3279 | Bracket - Scraper - LH | 1 | |
| 102 | R107-3281 | 107-3281 | Bracket - Scraper - RH | 1 | |
| 103 | R130-8094 | 130-8094 | Washer | 2 | |
| 104 | R3256-74 | 3256-74 | Washer - Flat | 2 | |
| 106 | R3234-11 | 3234-11 | Bolt - Hex Washer HD | 2 | |
| 107 | R16-9759 | 16-9759 | Link Assy | 4 | |
| 108 | R93-6981 | 93-6981 | Spacer | 8 | |
| 109 | R93-8806 | 93-8806 | Washer-Hardened | 16 | |
| 111 | R3220-25 | 3220-25 | Nut - Jam 1-3/8-12 | 1 | |
| 112 | R105-0173 | 105-0173 | Washer - Verticut Shaft 1/4 in | 1 | |
| 113 | R117-3760 | 117-3760 | Shaft Only - V-Cut | 1 | |
| 114 | R105-0177 | 105-0177 | Spacer - Verticut Shaft 1/4 in | 1 | |
| 115 | R105-0172 | 105-0172 | Spacer - Verticut Shaft 1.2 in | 18 | |
| 116 | R3231-4 | 01-157-0440, 01-173-0612, 3231-4 | Bolt - Carriage 3/8-16 x 1-1/2 | 2 | |
| 117 | R322-16 | 322-16, Apr-00 | Bolt - Hex HD 5/16-18 x 1-1/8 | 2 | |
| 118 | R453013 | 01-166-0140, 01-166-0700, 3256-5, 80-4850 | Washer - Flat 7/16 | 8 | |
| 119 | R112-8918 | 112-8918 | Shaft - Long - Rear Roller - 27" Units | 1 | |
| 120 | R93-6688 | 93-6688 | Decal - Warning | 1 | |

All original equipment manufacturers names and part numbers are used for identification purposes only, and we are in no way implying that our products are original equipment parts. Prices subject to change without notice.



Replaces Toro Reelmaster 3100-D Parts

27in DPA Verti-Cut Unit - Model 03203

Verti-Cut Reel & Frame



| Item No | R&R Part No. | OEM Part No. | Description | Qty Req | Order Quantity |
|---------|------------------|--|----------------------------------|---------|----------------|
| 121 | R114-3745 | 114-3745, 114-5411 | Locknut - Bearing - Stainless | 2 | |
| 122 | R112-7494 | 112-7494 | Seal | 4 | |
| 123 | R112-5290 | 112-5290, 251--346, 251-346, 72-5430 | Bearing - Stainless | 2 | |
| 124 | R114-3717 | 114-3717 | Seal | 2 | |
| 125 | R119-0625 | 119-0625 | Shaft Assy - V-Cut | 1 | |
| 126 | R302-5 | 21-6010, 302-11, 302-37, 302-47, 302-5, 302-57, 302-58, 302-6, 31-0300, 32-9660, 60-0800, 62-3880, 92-4181 | Fitting - Grease | 2 | |
| 127 | R117-0957 | 117-0957 | Shaft - Front Roller - 27" Units | 1 | |
| 128 | R445722 | 30-8980, 32128-2, 32128-20, 32128-20, 445722 | Nut - Serrated Washer | 2 | |
| 129 | R170714 | 302-34, 302-39, 62-3520 | Fitting - Pressure Relief | 2 | |
| 130 | R3231-7 | 3231-33, 3231-7 | Bolt - Carriage 3/8-16 x 2-1/4 | 2 | |
| 131 | R59-2580 | 59-2580 | Spacer - Wheel | 2 | |

All original equipment manufacturers names and part numbers are used for identification purposes only, and we are in no way implying that our products are original equipment parts. Prices subject to change without notice.



Replaces Toro Reelmaster 3100-D Parts

27in DPA Verti-Cut Unit - Model 03203

Verti-Cut Reel & Frame



| Item No | R&R Part No. | OEM Part No. | Description | Qty Req | Order Quantity |
|---------|------------------|--|------------------------------------|---------|----------------|
| 132 | R3234-7 | 3234-7 | Bolt - Hex Washer HD 5/16-18 x 5/8 | 4 | |
| 133 | R3296-28 | 119-4154, 140-9234, 32127-34, 32128-7, 32128-8, 32136-7, 3296-28 | Nut - 1/2-20 ESNA Jam | 4 | |
| 134 | R104-8300 | 104-8300, 104-8300 , 119-4041 | Locknut - 5/16-18 Flanged Y/Zinc | 4 | |
| 135 | R112-7451 | 100-9429, 112-7451 | Bolt - Hex Tap 3/8-16 x 2-3/4 | 2 | |
| 136 | R322-14 | 01-150-0830, 01-178-0524, 30-8900, 322-14 | Bolt - Hex HD 5/16-18 x 3 GR5 | 1 | |
| 137 | R94-8945 | 94-8945 | Bushing - Bronze - Link Bar | 8 | |
| 138 | R323-6 | 01-150-0010, 01-178-0608, 20-47-AD, 20-47-AGD, 3224-2, 323-6, 49-3510, 908034P, 908332 | Bolt - Hex HD 3/8-16 x 1 GR5 YZ | 2 | |
| 139 | R32128-43 | 30-8990, 32128-43, 3290-357 | Nut - Flanged Whiz - 3/8-16 | 2 | |
| 140 | R107-7773 | 107-7773 | Bolt - Soc HD Cap 5/16-18 x 2-1/2 | 2 | |

All original equipment manufacturers names and part numbers are used for identification purposes only, and we are in no way implying that our products are original equipment parts. Prices subject to change without notice.