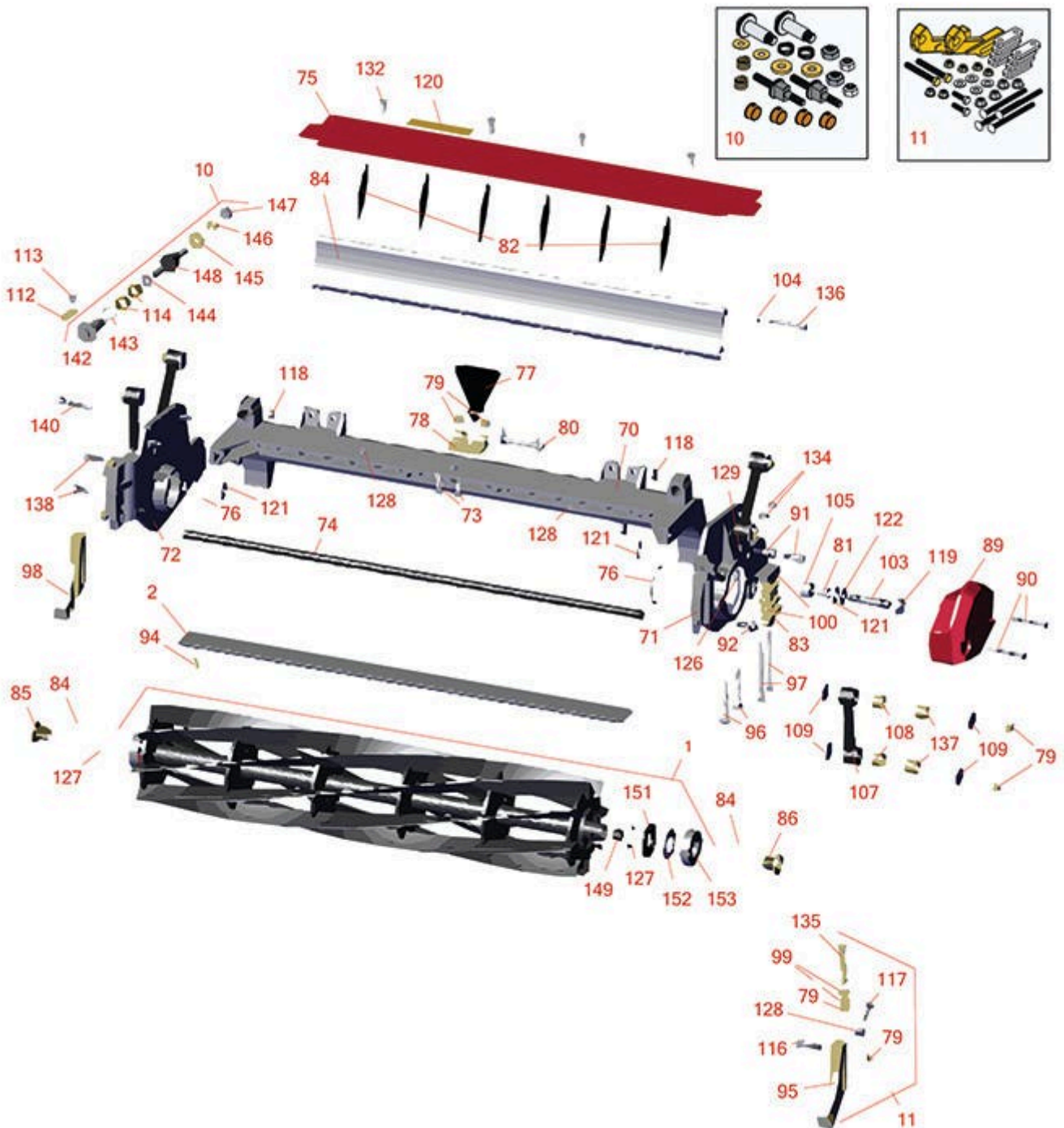




Replaces Toro Reelmaster 3100-D Parts

32in DPA Cutting Unit - Model 03191
Reel & Bedknife



All original equipment manufacturers names and part numbers are used for identification purposes only, and we are in no way implying that our products are original equipment parts. Prices subject to change without notice.



Replaces Toro Reelmaster 3100-D Parts

32in DPA Cutting Unit - Model 03191
Reel & Bedknife



Item No	R&R Part No.	OEM Part No.	Description	Qty Req	Order Quantity
R&R Reels, Lifetime Guaranteed					
1	R137-8483	137-8483	Reel - 8 Blade Razor Series Radial w/Bearings and Seals 32x7	1	
1	R137-8482	137-8482	Reel - 5 Blade Razor Series Radial w/Bearings and Seals 32x7	1	
R&R Bedknives, Lifetime Guaranteed					
2	R114-9389	114-9389	Bedknife - 32 in Unit - Standard	1	
2	R114-9391	114-9391	Bedknife - 32 in Unit - Heavy Duty	1	
R&R Razor Tool Steel Bedknives, Lifetime Guaranteed					
2	R112-8956	112-8956	Bedknife - Razor Tool Steel - 32 x 3/8 Fairway	1	
Overhaul Kits					
10	R120-7230	120-7230	Overhaul Kit - Fits DPA Units	1	
<i>Tech Note: Incl 2 ea.: R108-0015, R115-7039, R119-4155, R120-5116, R120-5118, R120-5120, R3296-33, R3296-48 & 4 ea: R106-5344:</i>					
11	R110-9600	110-9600	High HOC Kit	1	
<i>Tech Note: Includes 1 ea.: R120-0404, R120-0405 & 2 ea: R112-7451, R322-16, R445722 & 4 ea.: R106-9758, R104-8300, R453011, R104-8301 & 8 ea: R106-3925:</i>					
Other Parts Available					
70	R112-8978	112-8978	Frame - Center 32 in Unit	1	
71	R137-5976	137-5976	Side Plate Assy - 7 in LH Aluminum	1	
72	R137-5979	137-5979	Side Plate Assy - 7 in RH Aluminum	1	
73	R3231-25	01-173-0610, 30-9970, 3231-25, 3231-3, 900064P	Bolt - Carriage 3/8-16 x 1-1/4	2	

All original equipment manufacturers names and part numbers are used for identification purposes only, and we are in no way implying that our products are original equipment parts. Prices subject to change without notice.



Replaces Toro Reelmaster 3100-D Parts

32in DPA Cutting Unit - Model 03191

Reel & Bedknife



Item No	R&R Part No.	OEM Part No.	Description	Qty Req	Order Quantity
74	R112-8979	112-8979	Tube - Support - 32 in Units	1	
75	R112-8983	112-8983	Front Grass Shield Assy - 32 in Units	1	
76	R117-8177	117-8177	O-Ring	2	
77	R110-4088-03	110-4088-03, 119-8010-03	Kickstand	1	
78	R110-4058	110-4058	Bracket - Chain	1	
79	R104-8301	104-8301, 104-9301, 109-6658, 133-7570	Locknut - 3/8-16 Nylon Flanged	10	
80	R107-7400	107-7400	Pin - Lynch	1	
81	R56-9520	56-9520	Bushing - Nyliner	2	
82	R110-1706	110-1706	Deflector	6	
83	R106-3924	106-3924	Bracket - Rear Roller	2	
84	R125-1998	125-1998	Grass Shield - Rear	1	
85	R127-7109	127-7109	Insert-Threaded - 7 in Reel (RH)	1	
86	R127-7111	127-7111	Insert-Threaded - 7 in Reel (LH)	1	
88	R112-6967	112-6967	O-Ring	2	
89	R119-0614-01	119-0614-01	Weight	1	

All original equipment manufacturers names and part numbers are used for identification purposes only, and we are in no way implying that our products are original equipment parts. Prices subject to change without notice.



Replaces Toro Reelmaster 3100-D Parts

32in DPA Cutting Unit - Model 03191

Reel & Bedknife



Item No	R&R Part No.	OEM Part No.	Description	Qty Req	Order Quantity
90	R101526	01-150-0970, 01-178-0620, 101526, 20-53-AGD, 321-11, 3224-8, 323-11, 323-12, 323-31, 323-4, 323-47	Bolt - Hex HD 3/8-16 x 2-1/2 GR5	2	
91	R107-2979	107-2979	Bolt - Shoulder	6	
92	R3234-11	3234-11	Bolt - Hex Washer HD	2	
94	R119-4151	119-4151	Screw - Bedknife 5/16-18 x 17/32	10	
94	R150476	3-3816, 3-6462, 52-4910, 57-4910	Screw - Bedknife 5/16-18 x 5/8	10	
95	R120-0404	120-0404	Bracket- High HOC - LH	1	
<i>Tech Note: Fits 2011 & Newer:</i>					
96	R3230-26	3230-26	Screw - Carriage 5/16-18 x 3	4	
97	R106-9758		Bolt - Carriage 5/16x4	4	
97	R3230-30	3230-30	Bolt - Carriage 5/16x4 1/2	4	
98	R120-0405	120-0405	Bracket - High HOC - RH	1	
<i>Tech Note: Fits 2011 & Newer:</i>					

All original equipment manufacturers names and part numbers are used for identification purposes only, and we are in no way implying that our products are original equipment parts. Prices subject to change without notice.



Replaces Toro Reelmaster 3100-D Parts

32in DPA Cutting Unit - Model 03191

Reel & Bedknife



Item No	R&R Part No.	OEM Part No.	Description	Qty Req	Order Quantity
99	R453011	01-166-0100, 01-166-0120, 01-166-0270, 01-166-0500, 01-166-0600, 01-166-0620, 132-4593, 2356-3, 237-12, 24-10-AD, 24-11-AD, 24-11-BD, 24-12-AD, 24-12-BD, 30-9310, 32-8190, 3256-24, 3256-3, 3256-36, 3256-4, 453011, 47-9950, 48-9220, 513458, 7-0052	Washer - Flat 3/8 SAE Y/Zinc	4	
100	R119-0626	119-0626	Shim - Roller - 1/4 in - Slotted	8	
103	R106-9623	106-9623	Bolt - Bedbar	2	
104	R3256-74	3256-74	Washer - Flat	1	
105	R106-9618	106-9618	Bushing - Rubber	2	
107	R16-9759	16-9759	Link Assy	4	
108	R93-6981	93-6981	Spacer	8	
109	R93-8806	93-8806	Washer-Hardened	16	
112	R99-2097	99-2097	Detent - Bed Bar Adjuster	2	
113	R114-9396	114-9396, 119-4067	Bolt - Hex HD 5/16-18 x 3/8	2	

All original equipment manufacturers names and part numbers are used for identification purposes only, and we are in no way implying that our products are original equipment parts. Prices subject to change without notice.



Replaces Toro Reelmaster 3100-D Parts

32in DPA Cutting Unit - Model 03191

Reel & Bedknife



Item No	R&R Part No.	OEM Part No.	Description	Qty Req	Order Quantity
114	R106-5344	106-5344	Bushing - Flanged and Keyed	4	
116	R3231-4	01-157-0440, 01-173-0612, 3231-4	Bolt - Carriage 3/8-16 x 1-1/2	2	
117	R322-16	322-16, Apr-00	Bolt - Hex HD 5/16-18 x 1-1/8	2	
118	R32128-43	30-8990, 32128-43, 3290-357	Nut - Flanged Whiz - 3/8-16	6	
119	R3296-33	3296-33	Locknut - 5/8-18 ESNA Jam	2	
120	R93-6688	93-6688	Decal - Warning	1	
121	R61-1950	61-1950	Washer - Nylon - Bed Bar	4	
122	R453017	01-166-0050, 01-166-0240, 01-166-0800, 24-13-AD, 24-14-AD, 32-8110, 3256-26, 3256-6, 453017, 69-8980, 87-7270	Washer - Flat 1/2	2	
126	R302-5	21-6010, 302-11, 302-37, 302-47, 302-5, 302-57, 302-58, 302-6, 31-0300, 32-9660, 60-0800, 62-3880, 92-4181	Fitting - Grease	2	
127	R92-2601	92-2601	Snap Ring	2	

All original equipment manufacturers names and part numbers are used for identification purposes only, and we are in no way implying that our products are original equipment parts. Prices subject to change without notice.



Replaces Toro Reelmaster 3100-D Parts

32in DPA Cutting Unit - Model 03191

Reel & Bedknife



Item No	R&R Part No.	OEM Part No.	Description	Qty Req	Order Quantity
128	R445722	30-8980, 32128-2, 32128-20, 32128-20 , 445722	Nut - Serrated Washer	6	
129	R170714	302-34, 302-39, 62-3520	Fitting - Pressure Relief	2	
132	R3234-7	3234-7	Bolt - Hex Washer HD 5/16-18 x 5/8	4	
134	R104-8300	104-8300, 104-8300 , 119-4041	Locknut - 5/16-18 Flanged Y/Zinc	6	
135	R112-7451	100-9429, 112-7451	Bolt - Hex Tap 3/8-16 x 2-3/4	2	
136	R322-14	01-150-0830, 01-178-0524, 30-8900, 322-14	Bolt - Hex HD 5/16-18 x 3 GR5	1	
137	R94-8945	94-8945	Bushing - Bronze - Link Bar	8	
138	R323-6	01-150-0010, 01-178-0608, 20-47-AD, 20-47-AGD, 3224-2, 323-6, 49-3510, 908034P, 908332	Bolt - Hex HD 3/8-16 x 1 GR5 YZ	2	
140	R107-7773	107-7773	Bolt - Soc HD Cap 5/16-18 x 2-1/2	1	
142	R120-5118	120-5118	Shaft - Adjuster	2	
<i>Tech Note: 2012 & Newer:</i>					
143	R120-5116	120-5116	Washer - Wave	2	
144	R108-0015	108-0015	Washer - Flat	2	

All original equipment manufacturers names and part numbers are used for identification purposes only, and we are in no way implying that our products are original equipment parts. Prices subject to change without notice.



Replaces Toro Reelmaster 3100-D Parts

32in DPA Cutting Unit - Model 03191

Reel & Bedknife



Item No	R&R Part No.	OEM Part No.	Description	Qty Req	Order Quantity
145	R119-4155	119-4155	Washer - Hardened	2	
146	R120-5120	120-5120	Spring - Compression	2	
147	R3296-48	119-4039, 32146-7, 3296-34, 3296-48	Locknut - 7/16-14 ESNA	2	
148	R115-7039	115-7039	Screw - Adjuster - Bedbar	2	
149	R151064		Plug - Rubber - Fits R&R Reel Shaft Only	2	
151	R127-4284	127-4284	Washer - Special	2	
152	R115-3299	115-3299	Seal- Flocked	2	
153	R115-3296	115-3296	Bearing	2	

All original equipment manufacturers names and part numbers are used for identification purposes only, and we are in no way implying that our products are original equipment parts. Prices subject to change without notice.