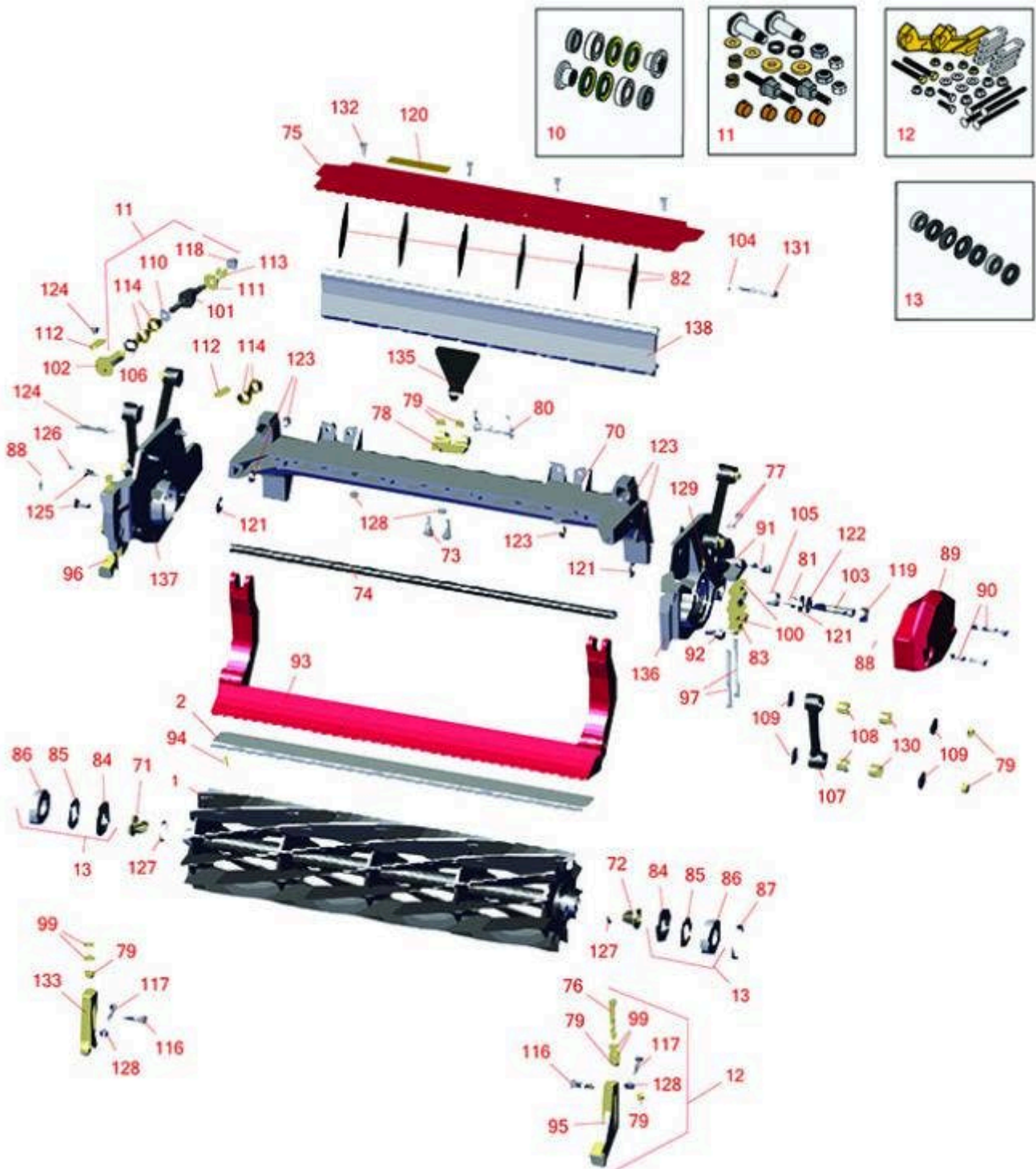




Replaces Toro Reelmaster 3100-D Parts

27in DPA Cutting Unit - Models 03188, 03189 & 03190
Reel & Bedknife



All original equipment manufacturers names and part numbers are used for identification purposes only, and we are in no way implying that our products are original equipment parts. Prices subject to change without notice.



Replaces Toro Reelmaster 3100-D Parts

27in DPA Cutting Unit - Models 03188, 03189 & 03190
Reel & Bedknife



| Item No | R&R Part No. | OEM Part No. | Description | Qty Req | Order Quantity |
|--|------------------|--------------|---|---------|----------------|
| R&R Reels, Lifetime Guaranteed | | | | | |
| 1 | R133-0182 | 133-0182 | Reel - 5 Blade Razor Series Radial 27x7 | 1 | |
| 1 | R137-8469 | 137-8469 | Reel - 5 Blade Razor Series Radial Low Drag w/Bearings and Seals 27x7 | 1 | |
| 1 | R133-0184 | 133-0184 | Reel - 8 Blade Razor Series Radial 27x7 | 1 | |
| 1 | R137-8470 | 137-8470 | Reel - 8 Blade Razor Series Radial w/Bearings and Seals 27x7 | 1 | |
| 1 | R133-8278 | 133-8278 | Reel - 11 Blade Razor Series Radial 27x7 | 1 | |
| 1 | R137-8471 | 137-8471 | Reel - 11 Blade Razor Series Radial w/Bearings and Seals 27x7 | 1 | |
| R&R Bedknives, Lifetime Guaranteed | | | | | |
| 2 | R114-9388 | 114-9388 | Bedknife - 27 in Unit - Standard | 1 | |
| 2 | R114-9390 | 114-9390 | Bedknife - 27 in Unit - Heavy Duty | 1 | |
| R&R Razor Tool Steel Bedknives, Lifetime Guaranteed | | | | | |
| 2 | R112-8910 | 112-8910 | Bedknife - Razor Tool Steel - 27 High Cut | 1 | |
| Overhaul Kits | | | | | |
| 10 | R114-5430 | 114-5430 | Overhaul Kit - Roller | 1 | |
| <i>Tech Note: Includes 4 ea.: R112-7494 Seals; 2 ea.: R302-5 Grease Zerks, R114-3717 Seals, R112-5290 Bearings & R114-3745 Locknuts:</i> | | | | | |
| 11 | R120-7230 | 120-7230 | Overhaul Kit - Fits DPA Units | 1 | |
| <i>Tech Note: Incl 2 ea.: R108-0015, R115-7039, R119-4155, R120-5116, R120-5118, R120-5120, R3296-33, R3296-48 & 4 ea: R106-5344:</i> | | | | | |
| 12 | R110-9600 | 110-9600 | High HOC Kit | 1 | |

All original equipment manufacturers names and part numbers are used for identification purposes only, and we are in no way implying that our products are original equipment parts. Prices subject to change without notice.



Replaces Toro Reelmaster 3100-D Parts

27in DPA Cutting Unit - Models 03188, 03189 & 03190
Reel & Bedknife



| Item No | R&R Part No. | OEM Part No. | Description | Qty Req | Order Quantity |
|---|------------------|--|---------------------------------------|---------|----------------|
| <i>Tech Note: Includes 1 ea.: R120-0404, R120-0405 & 2 ea: R112-7451, R322-16, R445722 & 4 ea.: R106-9758, R104-8300, R453011, R104-8301 & 8 ea: R106-3925:</i> | | | | | |
| 13 | R131-3233 | 131-3233 | Groomer/Rrb Seal Kit | 1 | |
| Other Parts Available | | | | | |
| 70 | R112-8935 | 112-8935 | Frame - Center - 27 in Unit | 1 | |
| 71 | R127-7109 | 127-7109 | Insert-Threaded - 7 in Reel (RH) | 1 | |
| 72 | R127-7111 | 127-7111 | Insert-Threaded - 7 in Reel (LH) | 1 | |
| 73 | R3231-25 | 01-173-0610, 30-9970, 3231-25, 3231-3, 900064P | Bolt - Carriage 3/8-16 x 1-1/4 | 2 | |
| 74 | R112-8936 | 112-8936 | Tube- Support - 27 in Units | 1 | |
| 75 | R112-8942 | 112-8942 | Front Grass Shield Assy - 27 in Units | 1 | |
| 76 | R112-7451 | 100-9429, 112-7451 | Bolt - Hex Tap 3/8-16 x 2-3/4 | 2 | |
| 76 | R107-4026 | 107-4026 | Bolt - Hex Tap 3/8-16 x 3-3/4 | 2 | |
| 77 | R104-8300 | 104-8300, 104-8300, 119-4041 | Locknut - 5/16-18 Flanged Y/Zinc | 6 | |
| 78 | R110-4058 | 110-4058 | Bracket - Chain | 1 | |
| 79 | R104-8301 | 104-8301, 104-9301, 109-6658, 133-7570 | Locknut - 3/8-16 Nylon Flanged | 2 | |
| 80 | R107-7400 | 107-7400 | Pin - Lynch | 1 | |
| 81 | R56-9520 | 56-9520 | Bushing - Nyliner | 2 | |
| 82 | R110-1706 | 110-1706 | Deflector | 6 | |

All original equipment manufacturers names and part numbers are used for identification purposes only, and we are in no way implying that our products are original equipment parts. Prices subject to change without notice.



Replaces Toro Reelmaster 3100-D Parts

27in DPA Cutting Unit - Models 03188, 03189 & 03190
Reel & Bedknife



| Item No | R&R Part No. | OEM Part No. | Description | Qty Req | Order Quantity |
|--|---------------------|--|--------------------------------------|---------|----------------|
| 83 | R106-3924 | 106-3924 | Bracket - Rear Roller | 2 | |
| 84 | R127-4284 | 127-4284 | Washer - Special | 2 | |
| 85 | R115-3299 | 115-3299 | Seal- Flocked | 2 | |
| 86 | R115-3296 | 115-3296 | Bearing | 2 | |
| 87 | R105-5700 | 105-5700, 115-5258 | Wave Washer - Bearing | 1 | |
| 88 | R112-6967 | 112-6967 | O-Ring | 2 | |
| 89 | R119-0614-01 | 119-0614-01 | Weight | 1 | |
| 90 | R101526 | 01-150-0970, 01-178-0620, 101526, 20-53-AGD, 321-11, 3224-8, 323-11, 323-12, 323-31, 323-4, 323-47 | Bolt - Hex HD 3/8-16 x 2-1/2 GR5 | 2 | |
| 91 | R107-2979 | 107-2979 | Bolt - Shoulder | 6 | |
| 92 | R3234-11 | 3234-11 | Bolt - Hex Washer HD | 2 | |
| 93 | R112-8908-01 | 112-8908-01 | Bedbar - 27 in - Fits OEM Units Only | 1 | |
| 94 | R119-4151 | 119-4151 | Screw - Bedknife 5/16-18 x 17/32 | 10 | |
| 95 | R120-0404 | 120-0404 | Bracket- High HOC - LH | 1 | |
| <i>Tech Note: Fits 2011 & Newer:</i> | | | | | |
| 96 | R120-0405 | 120-0405 | Bracket - High HOC - RH | 1 | |
| <i>Tech Note: Fits 2011 & Newer:</i> | | | | | |
| 97 | R3230-30 | 3230-30 | Bolt - Carriage 5/16x4 1/2 | 4 | |

All original equipment manufacturers names and part numbers are used for identification purposes only, and we are in no way implying that our products are original equipment parts. Prices subject to change without notice.



Replaces Toro Reelmaster 3100-D Parts

27in DPA Cutting Unit - Models 03188, 03189 & 03190
Reel & Bedknife



| Item No | R&R Part No. | OEM Part No. | Description | Qty Req | Order Quantity |
|-------------------------------------|------------------|--|----------------------------------|---------|----------------|
| 97 | R106-9758 | | Bolt - Carriage 5/16x4 | 4 | |
| 97 | R3230-26 | 3230-26 | Screw - Carriage 5/16-18 x 3 | 4 | |
| 99 | R453011 | 01-166-0100, 01-166-0120, 01-166-0270, 01-166-0500, 01-166-0600, 01-166-0620, 132-4593, 2356-3, 237-12, 24-10-AD, 24-11-AD, 24-11-BD, 24-12-AD, 24-12-BD, 30-9310, 32-8190, 3256-24, 3256-3, 3256-36, 3256-4, 453011, 47-9950, 48-9220, 513458, 7-0052 | Washer - Flat 3/8 SAE Y/Zinc | 4 | |
| 100 | R119-0626 | 119-0626 | Shim - Roller - 1/4 in - Slotted | 8 | |
| <i>Tech Note: 2011 & Newer:</i> | | | | | |
| 101 | R115-7039 | 115-7039 | Screw - Adjuster - Bedbar | 2 | |
| 102 | R120-5118 | 120-5118 | Shaft - Adjuster | 2 | |
| <i>Tech Note: 2012 & Newer:</i> | | | | | |
| 103 | R106-9623 | 106-9623 | Bolt - Bedbar | 2 | |
| 104 | R3256-74 | 3256-74 | Washer - Flat | 1 | |
| 105 | R106-9618 | 106-9618 | Bushing - Rubber | 2 | |

All original equipment manufacturers names and part numbers are used for identification purposes only, and we are in no way implying that our products are original equipment parts. Prices subject to change without notice.



Replaces Toro Reelmaster 3100-D Parts

27in DPA Cutting Unit - Models 03188, 03189 & 03190
Reel & Bedknife



| Item No | R&R Part No. | OEM Part No. | Description | Qty Req | Order Quantity |
|---------|------------------|--|--------------------------------|---------|----------------|
| 106 | R120-5116 | 120-5116 | Washer - Wave | 2 | |
| 107 | R16-9759 | 16-9759 | Link Assy | 4 | |
| 108 | R93-6981 | 93-6981 | Spacer | 8 | |
| 109 | R93-8806 | 93-8806 | Washer-Hardened | 16 | |
| 110 | R108-0015 | 108-0015 | Washer - Flat | 2 | |
| 111 | R119-4155 | 119-4155 | Washer - Hardened | 2 | |
| 112 | R99-2097 | 99-2097 | Detent - Bed Bar Adjuster | 2 | |
| 113 | R120-5120 | 120-5120 | Spring - Compression | 2 | |
| 114 | R106-5344 | 106-5344 | Bushing - Flanged and Keyed | 4 | |
| 116 | R3231-4 | 01-157-0440, 01-173-0612, 3231-4 | Bolt - Carriage 3/8-16 x 1-1/2 | 2 | |
| 117 | R322-16 | 322-16, Apr-00 | Bolt - Hex HD 5/16-18 x 1-1/8 | 2 | |
| 118 | R3296-48 | 119-4039, 32146-7, 3296-34, 3296-48 | Locknut - 7/16-14 ESNA | 2 | |
| 119 | R3296-33 | 3296-33 | Locknut - 5/8-18 ESNA Jam | 12 | |
| 120 | R93-6688 | 93-6688 | Decal - Warning | 1 | |
| 121 | R61-1950 | 61-1950 | Washer - Nylon - Bed Bar | 4 | |

All original equipment manufacturers names and part numbers are used for identification purposes only, and we are in no way implying that our products are original equipment parts. Prices subject to change without notice.



Replaces Toro Reelmaster 3100-D Parts

27in DPA Cutting Unit - Models 03188, 03189 & 03190
Reel & Bedknife



| Item No | R&R Part No. | OEM Part No. | Description | Qty Req | Order Quantity |
|---------|------------------|--|-----------------------------------|---------|----------------|
| 122 | R453017 | 01-166-0050, 01-166-0240, 01-166-0800, 24-13-AD, 24-14-AD, 32-8110, 3256-26, 3256-6, 453017, 69-8980, 87-7270 | Washer - Flat 1/2 | 2 | |
| 123 | R32128-43 | 30-8990, 32128-43, 3290-357 | Nut - Flanged Whiz - 3/8-16 | 6 | |
| 124 | R107-7773 | 107-7773 | Bolt - Soc HD Cap 5/16-18 x 2-1/2 | 1 | |
| 125 | R323-6 | 01-150-0010, 01-178-0608, 20-47-AD, 20-47-AGD, 3224-2, 323-6, 49-3510, 908034P, 908332 | Bolt - Hex HD 3/8-16 x 1 GR5 YZ | 2 | |
| 126 | R302-5 | 21-6010, 302-11, 302-37, 302-47, 302-5, 302-57, 302-58, 302-6, 31-0300, 32-9660, 60-0800, 62-3880, 92-4181 | Fitting - Grease | 2 | |
| 127 | R92-2601 | 92-2601 | Snap Ring | 2 | |

All original equipment manufacturers names and part numbers are used for identification purposes only, and we are in no way implying that our products are original equipment parts. Prices subject to change without notice.



Replaces Toro Reelmaster 3100-D Parts

27in DPA Cutting Unit - Models 03188, 03189 & 03190
Reel & Bedknife



| Item No | R&R Part No. | OEM Part No. | Description | Qty Req | Order Quantity |
|--|---------------------|--|------------------------------------|---------|----------------|
| 128 | R445722 | 30-8980, 32128-2, 32128-20, 32128-20, 445722 | Nut - Serrated Washer | 2 | |
| 129 | R170714 | 302-34, 302-39, 62-3520 | Fitting - Pressure Relief | 2 | |
| 130 | R94-8945 | 94-8945 | Bushing - Bronze - Link Bar | 8 | |
| 131 | R322-14 | 01-150-0830, 01-178-0524, 30-8900, 322-14 | Bolt - Hex HD 5/16-18 x 3 GR5 | 1 | |
| 132 | R3234-7 | 3234-7 | Bolt - Hex Washer HD 5/16-18 x 5/8 | 4 | |
| 133 | R125-2796 | 125-2796 | Bracket- Front HOC | 2 | |
| <i>Tech Note: Fits 2013 & Newer:</i> | | | | | |
| 135 | R110-4088-03 | 110-4088-03, 119-8010-03 | Kickstand | 1 | |
| 136 | R137-5976 | 137-5976 | Side Plate Assy - 7 in LH Aluminum | 1 | |
| 137 | R137-5979 | 137-5979 | Side Plate Assy - 7 in RH Aluminum | 1 | |
| 138 | R125-1997 | 125-1997 | Grass Shield - Rear 27 in Unit | 1 | |

All original equipment manufacturers names and part numbers are used for identification purposes only, and we are in no way implying that our products are original equipment parts. Prices subject to change without notice.