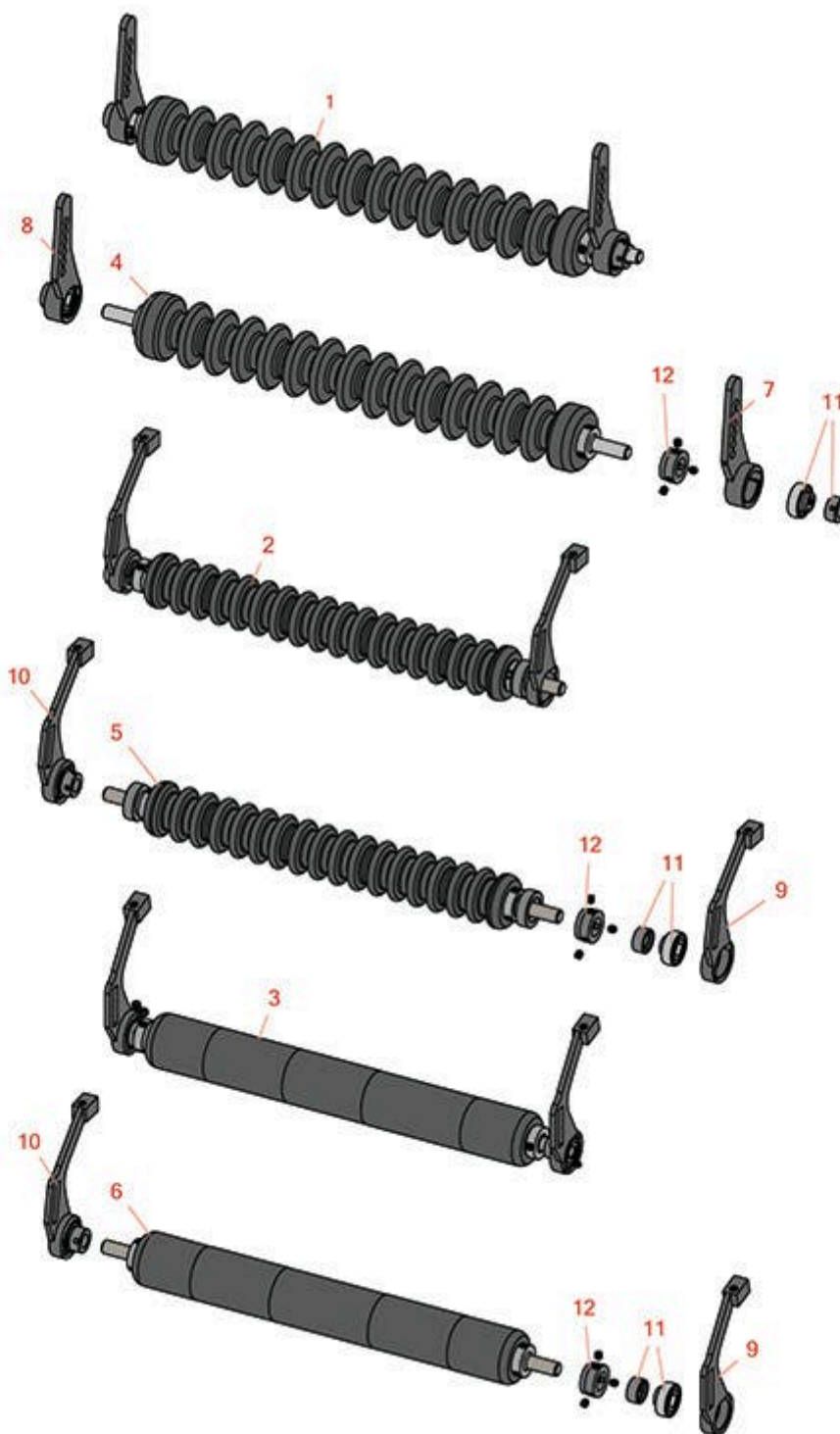




Replaces Toro Reelmaster 223D Parts

Cutting Unit

Minuteman Roller System



All original equipment manufacturers names and part numbers are used for identification purposes only, and we are in no way implying that our products are original equipment parts. Prices subject to change without notice.



Replaces Toro Reelmaster 223D Parts

Cutting Unit

Minuteman Roller System



Item R&R

No Part No.

OEM

Part No.

Description

Qty

Req

Order

Quantity

Complete Minuteman Roller Systems

1	RMT1001	Minuteman Front Grooved Roller System	0
---	----------------	---------------------------------------	---

Detail Description: Complete roller systems include roller and two brackets with bearings.:

2	RMT1002	Minuteman Rear Grooved Roller System	0
---	----------------	--------------------------------------	---

Detail Description: Complete roller systems include roller and two brackets with bearings.:

3	RMT1003	Minuteman Rear Smooth Roller System	0
---	----------------	-------------------------------------	---

Detail Description: Complete roller systems include roller and two brackets with bearings.:

Minuteman Rollers Only

4	RM528	Minuteman Grooved Roller Only	0
---	--------------	-------------------------------	---

Detail Description: Use with Minuteman Roller Bracket System Only:

5	RM519	Minuteman Grooved Roller Only	0
---	--------------	-------------------------------	---

Detail Description: Use with Minuteman Roller Bracket System Only:

6	RM520	Minuteman Smooth Roller Only	0
---	--------------	------------------------------	---

Detail Description: Use with Minuteman Roller Bracket System Only:

Other Parts Available

7	RT121	Bracket - Front LH	0
---	--------------	--------------------	---

8	RT122	Bracket - Front RH	0
---	--------------	--------------------	---

9	RT131	Bracket - Rear LH	0
---	--------------	-------------------	---

10	RTM132	Bracket - Rear RH	0
----	---------------	-------------------	---

11	RMMB157	Bearing w/Locking Collar	0
----	----------------	--------------------------	---

12	RMM3	End Hub - 7/8 ID	0
----	-------------	------------------	---

All original equipment manufacturers names and part numbers are used for identification purposes only, and we are in no way implying that our products are original equipment parts. Prices subject to change without notice.