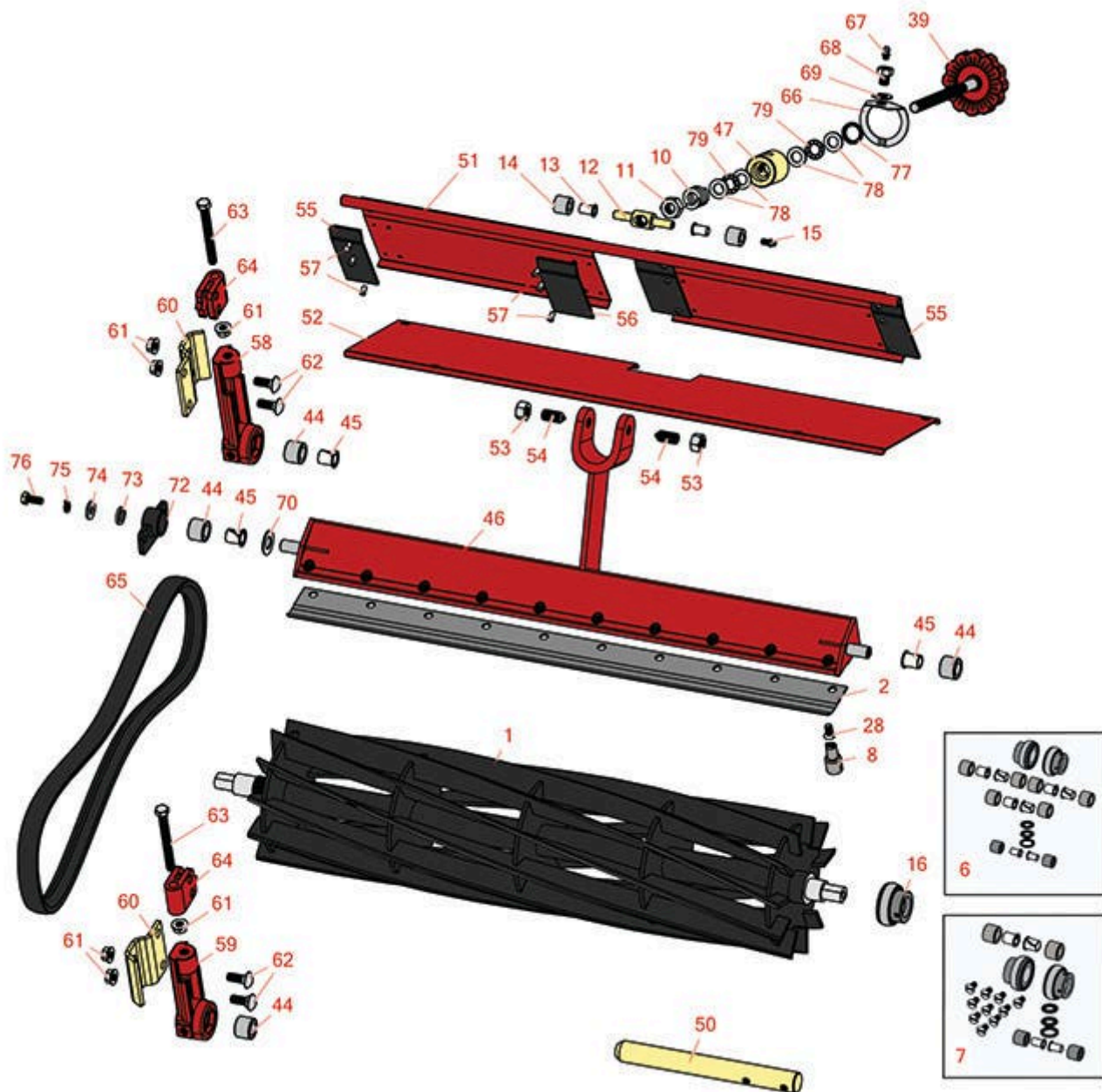




# Replaces Toro Reelmaster 216 Parts

Cutting Unit  
Reel & Bedknife



All original equipment manufacturers names and part numbers are used for identification purposes only, and we are in no way implying that our products are original equipment parts. Prices subject to change without notice.



# Replaces Toro Reelmaster 216 Parts

Cutting Unit  
Reel & Bedknife



Item No	R&R Part No.	OEM Part No.	Description	Qty Req	Order Quantity
---------	--------------	--------------	-------------	---------	----------------

## R&R Reels, Lifetime Guaranteed

1	<b>R12-7059</b>	12-7059, 61-0260	Reel - 5 Blade RH/Rear	2	
---	-----------------	---------------------	------------------------	---	--

*Detail Description:* R&R Reel blades are manufactured from high carbon-boron alloy steel and then hardened to RC46-49 to match the temper of our bedknives and original equipment bedknives. All R&R Reels are cylindrically ground on bearing surfaces and then relief ground. Reels are then precision computer balanced for extended bearing and reel life. R&R Products Reels are guaranteed against defects in material and workmanship for the life of the reel under normal use.:

1	<b>R12-7079</b>	12-7079, 61-0270	Reel - 5 Blade LH	1	
---	-----------------	---------------------	-------------------	---	--

*Detail Description:* R&R Reel blades are manufactured from high carbon-boron alloy steel and then hardened to RC46-49 to match the temper of our bedknives and original equipment bedknives. All R&R Reels are cylindrically ground on bearing surfaces and then relief ground. Reels are then precision computer balanced for extended bearing and reel life. R&R Products Reels are guaranteed against defects in material and workmanship for the life of the reel under normal use.:

1	<b>R12-7089</b>	12-7089, 61-0261	Reel - 8 Blade RH/Center	2	
---	-----------------	---------------------	--------------------------	---	--

*Detail Description:* R&R Reel blades are manufactured from high carbon-boron alloy steel and then hardened to RC46-49 to match the temper of our bedknives and original equipment bedknives. All R&R Reels are cylindrically ground on bearing surfaces and then relief ground. Reels are then precision computer balanced for extended bearing and reel life. R&R Products Reels are guaranteed against defects in material and workmanship for the life of the reel under normal use.:

1	<b>R12-7099</b>	12-7099, 61-0271	Reel - 8 Blade LH	1	
---	-----------------	---------------------	-------------------	---	--

*Detail Description:* R&R Reel blades are manufactured from high carbon-boron alloy steel and then hardened to RC46-49 to match the temper of our bedknives and original equipment bedknives. All R&R Reels are cylindrically ground on bearing surfaces and then relief ground. Reels are then precision computer balanced for extended bearing and reel life. R&R Products Reels are guaranteed against defects in material and workmanship for the life of the reel under normal use.:

1	<b>R13-1699</b>	13-1699	Reel - 11 Blade RH/Rear	2	
---	-----------------	---------	-------------------------	---	--

All original equipment manufacturers names and part numbers are used for identification purposes only, and we are in no way implying that our products are original equipment parts. Prices subject to change without notice.



# Replaces Toro Reelmaster 216 Parts

Cutting Unit  
Reel & Bedknife



Item No	R&R Part No.	OEM Part No.	Description	Qty Req	Order Quantity
---------	--------------	--------------	-------------	---------	----------------

*Detail Description: R&R Reel blades are manufactured from high carbon-boron alloy steel and then hardened to RC46-49 to match the temper of our bedknives and original equipment bedknives. All R&R Reels are cylindrically ground on bearing surfaces and then relief ground. Reels are then precision computer balanced for extended bearing and reel life. R&R Products Reels are guaranteed against defects in material and workmanship for the life of the reel under normal use.:*

1	<b>R13-1709</b>	13-1709	Reel - 11 Blade LH	1
---	-----------------	---------	--------------------	---

*Detail Description: R&R Reel blades are manufactured from high carbon-boron alloy steel and then hardened to RC46-49 to match the temper of our bedknives and original equipment bedknives. All R&R Reels are cylindrically ground on bearing surfaces and then relief ground. Reels are then precision computer balanced for extended bearing and reel life. R&R Products Reels are guaranteed against defects in material and workmanship for the life of the reel under normal use.:*

## R&R Bedknives, Lifetime Guaranteed

2	<b>R62-5180</b>	105-6785, 61-0800, 62-5180	Bedknife - Lowcut - 27 in Unit	1
---	-----------------	----------------------------------	--------------------------------	---

*Detail Description: R&R Bedknives are manufactured from high carbon-boron alloy steel and then hardened to RC46-49 to match the temper of our reel blades and original equipment reels. Bedknives are surface ground on the top and front edge and straightened three times before being packaged with oil for rust prevention. All R&R Bedknives now have an increased front edge grind for added life. All R&R Bedknives are guaranteed against defects in material and workmanship under normal use for the life of the part.:*

## R&R Razor Tool Steel Bedknives, Lifetime Guaranteed

2	<b>R112-8910</b>	112-8910	Bedknife - Razor Tool Steel - 27 High Cut	1
---	------------------	----------	---	---

*Detail Description: R&R Razor bedknives are manufactured from premium alloy tool steel steel and then hardened to RC48-51 to match the temper of our Razor reel blades and original equipment premium series reels. Bedknives are surface ground on the top and front edge and specially packaged for rust prevention. All R&R Bedknives now have an increased front edge grind for added life. All R&R Bedknives are guaranteed against defects in material and workmanship under normal use for the life of the part. You can expect up to double the life over standard bedknives.:*

## Overhaul Kits & Service Tools

6	<b>R150545</b>		Overhaul Kit - Cutting Unit	0
---	----------------	--	-----------------------------	---

All original equipment manufacturers names and part numbers are used for identification purposes only, and we are in no way implying that our products are original equipment parts. Prices subject to change without notice.



# Replaces Toro Reelmaster 216 Parts

Cutting Unit  
Reel & Bedknife



Item No	R&R Part No.	OEM Part No.	Description	Qty Req	Order Quantity
---------	--------------	--------------	-------------	---------	----------------

*Detail Description: Includes 6 ea.: R56-9510 Rubber Bushings, R56-9520 Nyliner Bushings; 2 ea.: R52-2890 Bushings, R71-1360 Reel Bearings, R62-5510 Bushings, R257-6 Thrust Bearings; 1 ea.: R253-84 Seal:*

7	<b>R13-3649</b>		Overhaul Kit - Cutting Unit	0	
---	-----------------	--	-----------------------------	---	--

*Detail Description: Includes 10 ea.: R150476 Screws; 2 ea.: R257-6 Bearings, R52-2890 Bushings, R56-9510 Bushings, R56-9520 Bushings, R62-5510 Bushings, R71-1360 Bearings & 1ea: R253-84 Seal:*

8	<b>R51-0880</b>	51-0880	Bedknife Screw Driver Tool	0	
---	-----------------	---------	----------------------------	---	--

*Detail Description: Easily install and remove bed knife screws with the help of a ratchet with 3/8" drive. Tool manufactured with hardened alloy steel.:*

## Other Parts Available

10	<b>R57-5270</b>	57-5270	Spring - Adjusting Handle	1	
----	-----------------	---------	---------------------------	---	--

11	<b>R3296-62</b>	3296-62	Locknut - 1/2-20 LH Jam	1	
----	-----------------	---------	-------------------------	---	--

12	<b>R57-5260</b>	107-7409, 57-5260	Pivot - 1/2-20 - Bed Bar	1	
----	-----------------	----------------------	--------------------------	---	--

13	<b>R52-2890</b>	52-2890	Bushing - Flanged	2	
----	-----------------	---------	-------------------	---	--

14	<b>R62-5510</b>	52-2870, 62-5510	Bushing	2	
----	-----------------	---------------------	---------	---	--

15	<b>R302-18</b>	302-18	Zerk - Grease Press Style	1	
----	----------------	--------	---------------------------	---	--

16	<b>R71-1360</b>	251-219, 251-253, 251-254, 251-320, 71-1360, 88-7880, 94-3405	Bearing	2	
----	-----------------	---	---------	---	--

28	<b>R150475</b>	3-6462	Screw - Bedknife Stainless 5/16-18 x 5/8	10	
----	----------------	--------	---	----	--

*Detail Description: Pre-Packaged in bags of 50:*

All original equipment manufacturers names and part numbers are used for identification purposes only, and we are in no way implying that our products are original equipment parts. Prices subject to change without notice.



# Replaces Toro Reelmaster 216 Parts

Cutting Unit  
Reel & Bedknife



Item No	R&R Part No.	OEM Part No.	Description	Qty Req	Order Quantity
28	<b>R150476</b>	3-3816, 3-6462, 57-4910	Screw - Bedknife 5/16-18 x 5/8	10	
39	<b>R61-1070</b>	61-1070	Handle - Bed Bar Adjustment	1	
44	<b>R56-9510</b>	56-9510	Bushing - Rubber For Bed Bar / RI	6	
45	<b>R56-9520</b>	56-9520	Bushing - Nyliner	6	
46	<b>R61-1210</b>	61-1210, 61-1210-01	Backing Bar - Bed Knife	1	
47	<b>R52-2980</b>	52-2980	Housing - Pivot Spa	1	
50	<b>R61-3000</b>	61-3000	Shaft - Pivot Cutting Unit	3	
51	<b>R93-8849</b>	61-1130, 93-8817, 93-8849	Shield - Rear Grass Fits 27 in Units	1	
52	<b>R61-0560</b>	61-0560	Shield - Top	1	
53	<b>R443818</b>	01-191-0813, 3218-18, 3218-5	Nut - 1/2-13 Hex Jam Zinc	2	
54	<b>R57-5190</b>	32110-19, 57-5190	Screw - Adjusting	2	
55	<b>R61-3280</b>	61-3280	Cover - Rubber Side	2	
56	<b>R61-3290</b>	61-3290	Cover - Rubber Center	2	
57	<b>R3295-48</b>	3295-48	Rivet - 3/16 x 3/8 Tub	8	
58	<b>R61-0430</b>	61-0430, 61-0430-01	Bracket - Long - Rear Roller	2	
59	<b>R61-0440</b>	61-0440	Bracket - Short - Front Roller	2	
60	<b>R61-0910</b>	61-0910	Bracket	4	

All original equipment manufacturers names and part numbers are used for identification purposes only, and we are in no way implying that our products are original equipment parts. Prices subject to change without notice.



# Replaces Toro Reelmaster 216 Parts

Cutting Unit  
Reel & Bedknife



Item No	R&R Part No.	OEM Part No.	Description	Qty Req	Order Quantity
61	R3296-39	32127-25, 32128-36, 3290-357, 3296-17, 3296-22, 3296-39, 915663P, 99-7443	Locknut - 3/8-16 Nylon	16	
62	R3231-2	01-157-0170, 01-173-0608, 3231-2, 3231-22, 3231-28, 900063P	Bolt - Carriage 3/8-16 x 1	4	
63	R61-0790	323-57, 61-0790	Bolt - Roller Adjustment	4	
64	R61-0420	61-0420, 61-0420-01	Support - HOC	4	
65	R61-3380	61-3380	Belt - V Reel	3	
66	R52-3000	52-3000	Arm - Spring	1	
67	R302-5	21-6010, 302-11, 302-37, 302-47, 302-5, 302-57, 302-58, 302-6, 31-0300, 32-9660, 60-0800, 62-3880, 92-4181	Fitting - Grease	1	
68	R52-2990	324-25, 52-2990	Bolt - Spring Retainer	1	
69	R187-0	3256-25, 7-0032	Washer - Flat 7/16 SAE	1	
70	R61-1950	61-1950	Washer - Nylon - Bed Bar	1	

All original equipment manufacturers names and part numbers are used for identification purposes only, and we are in no way implying that our products are original equipment parts. Prices subject to change without notice.



## Replaces Toro Reelmaster 216 Parts

Cutting Unit  
Reel & Bedknife



Item No	R&R Part No.	OEM Part No.	Description	Qty Req	Order Quantity
72	<b>R61-1010</b>	61-1010	Housing - Bed Bar	1	
72	<b>R14-4459</b>	14-4459	Housing - w/Bushing For Bed Bar	1	
73	<b>R62-7120</b>	62-7120	Washer	1	
74	<b>R3256-56</b>	3256-56, 60-4750	Washer	1	
75	<b>R3253-4</b>	01-166-0110, 01-166-0510, 23-10-GD, 24-7170, 30-8520, 3253-4, 48-9350, 48-9360, 48-9570, 68-9420, 99-7577	Washer - Lock 5/16 Zinc	1	
76	<b>R322-3</b>	01-150-1420, 01-178-0506, 20-24-AD, 20-24-AGD, 322-3, 48-9270, 513339, 908017P	Bolt - Hex HD 5/16-18 x 3/4	1	
77	<b>R253-84</b>	253-84, 7-0044	Seal - Micro Adj.	1	
78	<b>R257-5</b>	257-5	Washer - Thrust	4	
79	<b>R257-6</b>	257-6	Bearing - Thrust	2	

All original equipment manufacturers names and part numbers are used for identification purposes only, and we are in no way implying that our products are original equipment parts. Prices subject to change without notice.