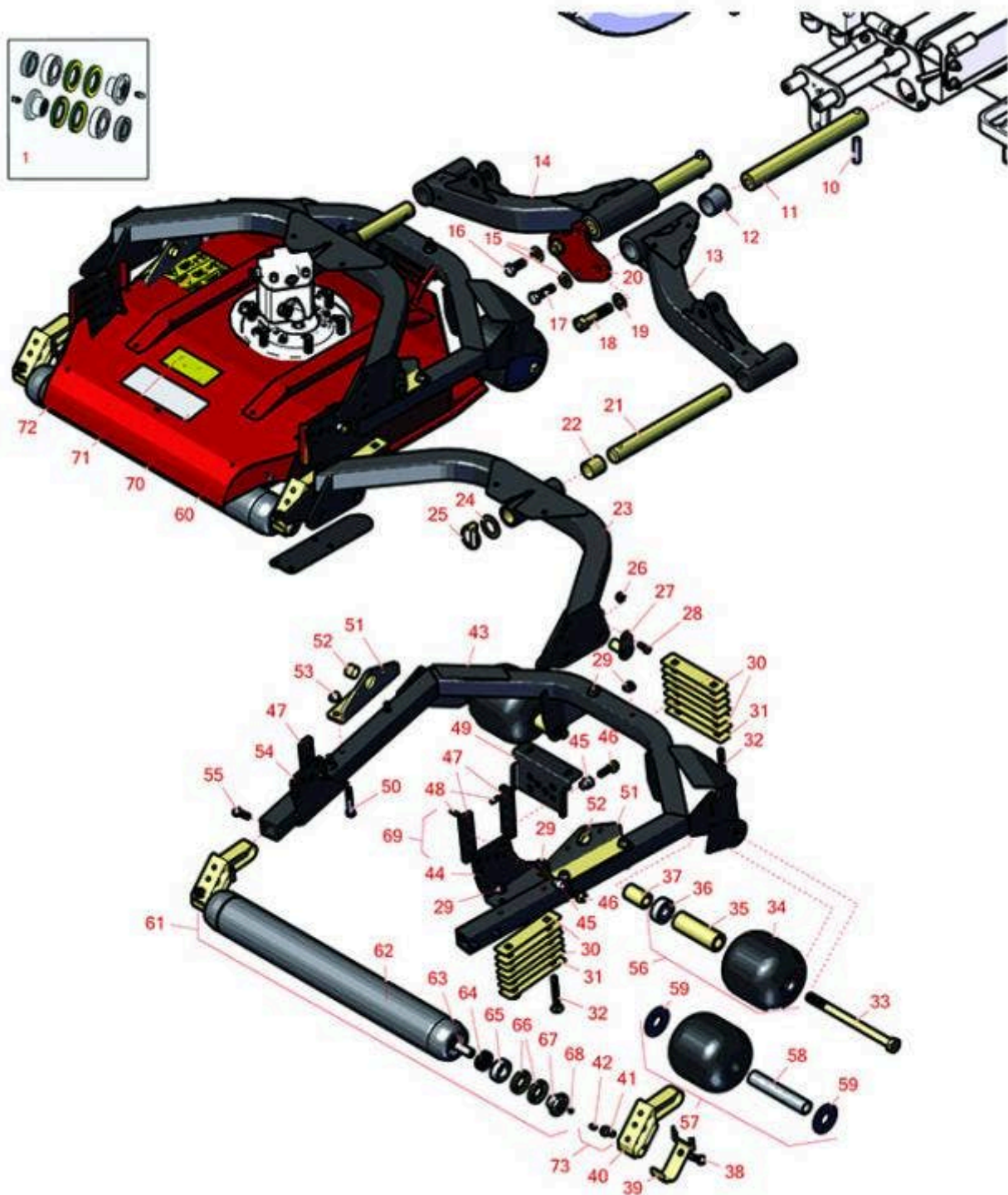




# Replaces Toro Groundsmaster 4300-D

## Parts

Traction Unit  
Rear Lift Arm



All original equipment manufacturers names and part numbers are used for identification purposes only, and we are in no way implying that our products are original equipment parts. Prices subject to change without notice.



# Replaces Toro Groundsmaster 4300-D

## Parts

Traction Unit

Rear Lift Arm



Item No	R&R Part No.	OEM Part No.	Description	Qty Req	Order Quantity
---------	--------------	--------------	-------------	---------	----------------

### Overhaul Kits

1	<b>R114-5430</b>	114-5430	Overhaul Kit - Roller	1	
---	------------------	----------	-----------------------	---	--

*Detail Description: Includes 4 ea.: R112-7494 Seals; 2 ea.: R302-5 Grease Zerks, R114-3717 Seals, R112-5290 Bearings & R114-3745 Locknuts:*

### Other Parts Available

10	<b>R32121-122</b>	01-153-0140, 32121-122	Pin - Roll 1/2 x 2	2	
----	-------------------	---------------------------	--------------------	---	--

11	<b>R117-0208</b>	117-0208	Shaft- Pivot - Lift Arm	2	
----	------------------	----------	-------------------------	---	--

12	<b>R69-6470</b>	69-6470	Bushing - Flanged	4	
----	-----------------	---------	-------------------	---	--

13	<b>R114-0383-03</b>	114-0383-03	Arm 3 Assy	1	
----	---------------------	-------------	------------	---	--

14	<b>R114-0382-03</b>	114-0382-03	Arm Assy	1	
----	---------------------	-------------	----------	---	--

15	<b>R87-7270-01</b>	87-7270	Washer - Flat 1/2	2	
----	--------------------	---------	-------------------	---	--

16	<b>R325-5</b>	01-150-0250, 01-178-0810, 19-8000, 20-86-AGD, 3226-1, 325-5, 513375	Bolt - Hex HD 1/2-13 x 1-1/4	1	
----	---------------	---------------------------------------------------------------------------------------	------------------------------	---	--

17	<b>R325-7</b>	01-150-0380, 01-178-0814, 3226-3, 325-7, 48-9490	Bolt - 1/2-13 x 1 3/4 Hex HD Gr 5	1	
----	---------------	--------------------------------------------------------------	-----------------------------------	---	--

17	<b>R100-6116</b>	100-6116	Bolt - 1/2-13 x 1 1/2 Flanged Hx HD Gr 8	1	
----	------------------	----------	------------------------------------------	---	--

*Tech Note: Models 30859, 30861 Only:*

All original equipment manufacturers names and part numbers are used for identification purposes only, and we are in no way implying that our products are original equipment parts. Prices subject to change without notice.



# Replaces Toro Groundsmaster 4300-D

## Parts

*Traction Unit*

*Rear Lift Arm*



Item No	R&R Part No.	OEM Part No.	Description	Qty Req	Order Quantity
18	<b>R327-7</b>	01-150-0700, 01-150-0710, 01-178-1020, 20-125-AGD, 20-126-AGD, 327-7	Bolt - Hx HD	2	
19	<b>R99-7667</b>	99-7667	Washer - Flat 5/8	2	
20	<b>R114-0352-01</b>	114-0352-01	Plate - Bridge	1	
21	<b>R95-8979</b>	95-8979	Shaft - Pivot - 11.687 in Hardened	2	
22	<b>R108-4000</b>	108-4000	Bushing	4	
23	<b>R108-7384-03</b>	108-7384-03	Carrier Frame Assy	2	
24	<b>R3-6781</b>	3-6781	Washer - Thrust - Castor Wheel	2	
25	<b>R283-71</b>	283-71	Pin - Lynch Heavy Duty	2	
26	<b>R104-8300</b>	104-8300, 104-8300 , 119-4041	Locknut - 5/16-18 Flanged Y/Zinc	4	
27	<b>R117-0132</b>	117-0132	Pin Assy	4	
28	<b>R322-3</b>	01-150-1420, 01-178-0506, 20-24-AD, 20-24-AGD, 322-3, 48-9270, 513339, 908017P	Bolt - Hex HD 5/16-18 x 3/4	4	
29	<b>R32128-43</b>	30-8990, 32128-43, 3290-357	Nut - Flanged Whiz - 3/8-16	12	
30	<b>R100-5799</b>	100-5799	Shim - HOC .060	36	
31	<b>R104-4641</b>	104-4641	Shim - HOC - .030	6	

All original equipment manufacturers names and part numbers are used for identification purposes only, and we are in no way implying that our products are original equipment parts. Prices subject to change without notice.



# Replaces Toro Groundsmaster 4300-D

## Parts

*Traction Unit  
Rear Lift Arm*



Item No	R&R Part No.	OEM Part No.	Description	Qty Req	Order Quantity
32	<b>R3231-9</b>	3231-9	Bolt - Carriage 3/8-16 x 2 3/4"	12	
33	<b>R117-0172</b>	117-0172	Bolt - Hex HD 5/8-11 x 8 1/2	4	
34	<b>R104-1093</b>	104-1093	Roller - Cast Iron	4	
35	<b>R100-5762</b>	100-5762	Spacer - Bearing Roller	4	
36	<b>R108-9017</b>	108-9017, 120-3366	Bearing-Stainless	8	
37	<b>R114-0430</b>	114-0430	Tube - Roller	4	
38	<b>R400264</b>	01-150-0180, 01-178-0610, 20-48-AD, 20-48-AGD, 32-9160, 3224-3, 323-29, 323-7, 400264, 908035P	Bolt - Hex HD 3/8-16 x 1-1/4	4	
39	<b>R107-7816</b>	107-7816	Bracket-Skid	4	
40	<b>R112-5268</b>	100-5768, 100-5768-01, 104-9487, 105-3991, 112-5268	Mount - Roller - Rotary Deck	4	
41	<b>R112-5270</b>	112-5270	Screw Assy - Roller Shaft	4	

All original equipment manufacturers names and part numbers are used for identification purposes only, and we are in no way implying that our products are original equipment parts. Prices subject to change without notice.



# Replaces Toro Groundsmaster 4300-D

## Parts

*Traction Unit*

*Rear Lift Arm*



Item No	R&R Part No.	OEM Part No.	Description	Qty Req	Order Quantity
42	<b>R302-5</b>	21-6010, 302-11, 302-37, 302-47, 302-5, 302-57, 302-58, 302-6, 31-0300, 32-9660, 60-0800, 62-3880, 92-4181	Fitting - Grease	6	
43	<b>R114-0440-03</b>	114-0440-03	Support - Deck	2	
44	<b>R108-7391-03</b>	108-7391-01, 108-7391-03	Bracket- HOC - RH	2	
45	<b>R105-9226</b>	100-5728, 105-9226	Spacer-HOC	6	
46	<b>R3234-24</b>	3234-24, 3234-8, 3234.24, 66-9301	Bolt - Hex Ser Was HD 3/8-16 x 1-1/4	6	
47	<b>R105-9225</b>	105-9225	Plate Assy - HOC	6	
48	<b>R158</b>	32121-3	Pin - Roll 3/16 x 3/4	6	
49	<b>R104-1052-03</b>	104-1052-01, 104-1052-03	Bracket- HOC - Front	2	
50	<b>R323-11</b>	01-150-1440, 01-178-0618, 20-52-AD, 3224-7, 323-11	Bolt - 3/8-16 x 2 1/4 GR5	8	
51	<b>R117-0118</b>	117-0118	Pivot Assy	4	
52	<b>R108-8482</b>	108-8482	Bushing - Sleeve 3/4 x 7/8 x 5/8	4	

All original equipment manufacturers names and part numbers are used for identification purposes only, and we are in no way implying that our products are original equipment parts. Prices subject to change without notice.



# Replaces Toro Groundsmaster 4300-D

## Parts

*Traction Unit*

*Rear Lift Arm*



Item No	R&R Part No.	OEM Part No.	Description	Qty Req	Order Quantity
53	<b>R104-8301</b>	104-8301, 104-9301, 109-6658, 133-7570	Locknut - 3/8-16 Nylon Flanged	8	
54	<b>R108-7392-03</b>	108-7392-01, 108-7392-03	Bracket- HOC - LH	2	
55	<b>R3234-11</b>	3234-11	Bolt - Hex Washer HD	8	
56	<b>R136-2908</b>	104-1092, 115-3418, 136-2908	Roller Assy - Cast Iron	2	
57	<b>R150495</b>		Roller - Smooth UHMW Polyethelyne Front 5 in Dia	2	
58	<b>R150496</b>		Wear Sleeve - Fits R150495 Only	2	
59	<b>R150497</b>		Washer - Fits R150495 Only	4	
60	<b>R108-7373</b>	108-7373	Deck Assy	1	
61	<b>R137-6143</b>	108-7387	Roller - Smooth Tubular Steel	1	
62	<b>R108-7389-03</b>	108-7389-03	Roller Tube Assy	1	
63	<b>R108-7388</b>	108-7388	Shaft-Roller	1	
64	<b>R114-3717</b>	114-3717	Seal	2	
65	<b>R112-5290</b>	112-5290, 251--346, 251-346, 72-5430	Bearing - Stainless	2	
66	<b>R112-7494</b>	112-7494	Seal	4	
67	<b>R114-3745</b>	106-6939, 108-3151, 114-3745, 114-5411	Locknut - Bearing - Stainless	2	
68	<b>R150690</b>	108-0989	Screw - Set 1/4-20 x 1/4	2	

All original equipment manufacturers names and part numbers are used for identification purposes only, and we are in no way implying that our products are original equipment parts. Prices subject to change without notice.

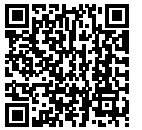


# Replaces Toro Groundsmaster 4300-D

## Parts

*Traction Unit*

*Rear Lift Arm*



Item No	R&R Part No.	OEM Part No.	Description	Qty Req	Order Quantity
69	<b>R136-2921</b>	136-2921	HOC Plate Assy	3	
70	<b>R121-3627</b>	104-1086, 121-3627	Decal - HOC	1	
71	<b>R93-7818</b>	93-7818	Decal - Blade Torque	1	
72	<b>R117-4764</b>	117-4764, 43-8480	Decal - Danger	2	
73	<b>R127-6422</b>	127-6422	Screw - Grease, Roller	2	

All original equipment manufacturers names and part numbers are used for identification purposes only, and we are in no way implying that our products are original equipment parts. Prices subject to change without notice.