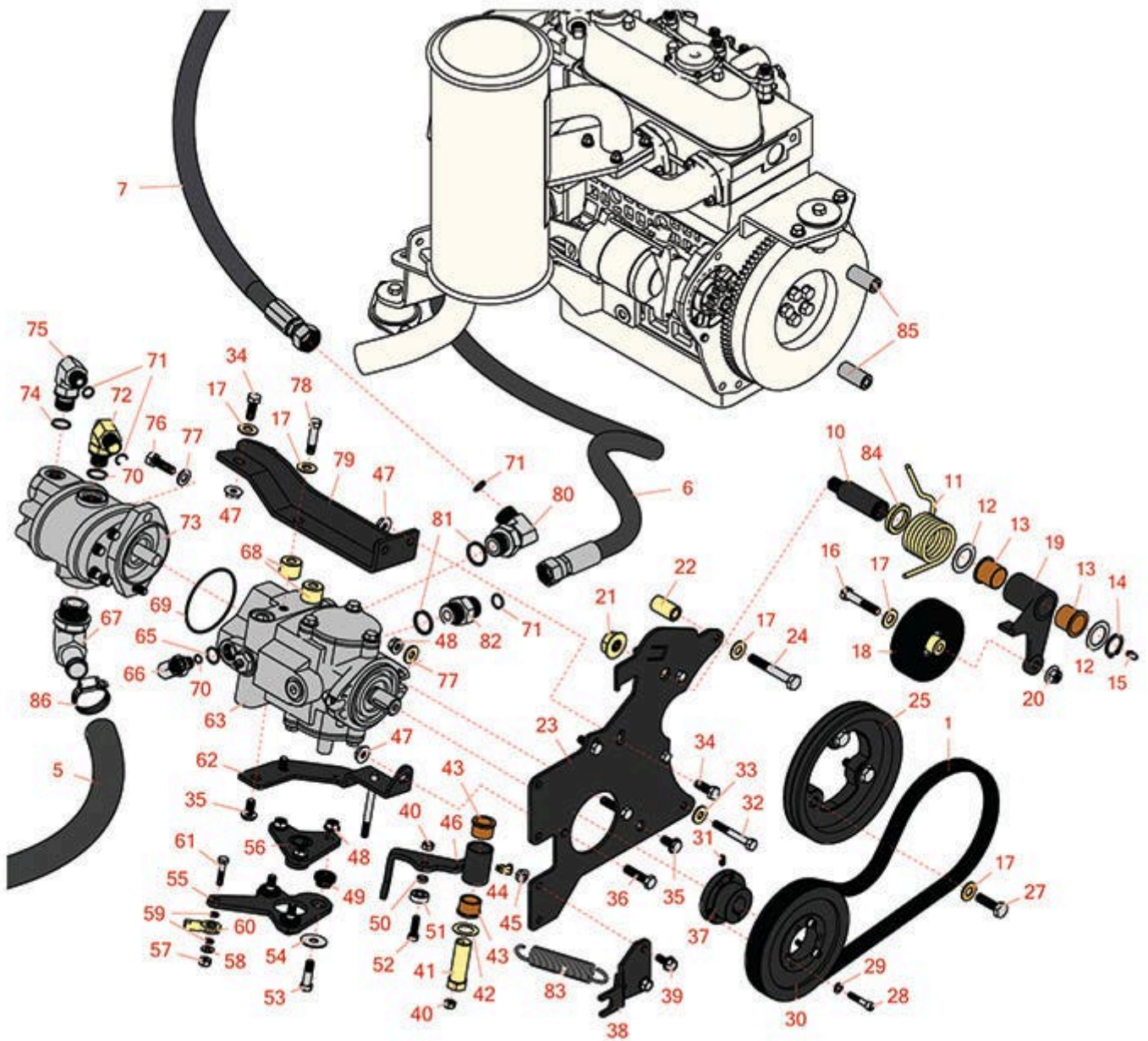




Replaces Toro Groundsmaster 3505-D Parts

*Traction Unit - Model 30826 & 30849
Hydrostat Neutral Arm*



All original equipment manufacturers names and part numbers are used for identification purposes only, and we are in no way implying that our products are original equipment parts. Prices subject to change without notice.



Replaces Toro Groundsmaster 3505-D Parts

Traction Unit - Model 30826 & 30849
Hydrostat Neutral Arm



Item No	R&R Part No.	OEM Part No.	Description	Qty Req	Order Quantity
Belts					
1	R120-3351	120-3351	Belt - 3V	1	
<i>Tech Note: Fits Model 30807/30849:</i>					
1	R99-3619	99-3619	Belt - 3V	1	
<i>Tech Note: Fits Models 30826/30839/30843:</i>					
Hoses					
5	R104-5486	104-5486	Hose	1	
6	R105-1214	105-1214, 95-8834	Hydraulic Hose Assy	1	
7	R108-9008	108-9008	Hydraulic Hose Assy	1	
Other Parts Available					
10	R99-3624	99-3624	Shaft- Pivot - Idler	1	
11	R115-3488	115-3488	Spring - Torsion	1	
12	R74-1810	74-1810	Washer	2	
13	R99-3631	99-3631	Bushing - Flanged	2	
14	R458039	32151-36	Ring - Retaining	1	
15	R302-5	21-6010, 302-11, 302-37, 302-47, 302-5, 302-57, 302-58, 302-6, 31-0300, 32-9660, 60-0800, 62-3880, 92-4181	Fitting - Grease	1	

All original equipment manufacturers names and part numbers are used for identification purposes only, and we are in no way implying that our products are original equipment parts. Prices subject to change without notice.



Replaces Toro Groundsmaster 3505-D Parts

*Traction Unit - Model 30826 & 30849
Hydrostat Neutral Arm*



Item No	R&R Part No.	OEM Part No.	Description	Qty Req	Order Quantity
16	R323-10	01-150-0680, 01-178-0616, 100-6663, 100-8320, 1489, 20-51-AD, 20-51-AGD, 3224-6, 323-10, 323-35, 908336	Bolt - Hex HD 3/8-16 x 2	1	
17	R80-6990	80-6990	Washer - Hardened	9	
18	R107-7834	107-7834	Pulley - Idler - 4 in x 3/8 Mt	1	
19	R99-3623-03	99-3623-03	Arm - Idler	1	
20	R32128-21	32128-21	Locknut - Flanged 3/8-16 Whiz Top Lock	1	
21	R32128-54	32128-54	Nut - 5/8-18 Hex Serr Flanged	1	
22	R95-8736	95-8736	Spacer	1	
23	R95-8933-03	95-8933, 95-8933-03	Plate - Mount - Pump	1	
24	R42-9370	42-9370	Bolt - Hex HD 10mm x 70mm	1	
25	R99-3626-03	99-3626-03	Pulley	1	
27	R56-2140	56-2140	Bolt	3	
28	R316797	321-13	Bolt - 1/4-20 x 1-1/4	3	
29	R3253-3	01-166-0070, 01-166-0410, 23-9-GD, 24-7150, 3253-3, 3256-1, 352-167	Washer - Lock 1/4	3	
30	R99-3620	99-3620	PULLEY-3V - Pump	1	

All original equipment manufacturers names and part numbers are used for identification purposes only, and we are in no way implying that our products are original equipment parts. Prices subject to change without notice.



Replaces Toro Groundsmaster 3505-D Parts

*Traction Unit - Model 30826 & 30849
Hydrostat Neutral Arm*



Item No	R&R Part No.	OEM Part No.	Description	Qty Req	Order Quantity
30	R120-3350	120-3350	PULLEY-3V	1	
31	R3241-5	3241-5, 3245-7, 352-103, Jul-93	Screw - Set 1/4-20 x 3/8	1	
32	R151379	33114-060, 42-9510	Bolt - Hx HD 8-1.25 x 65mm	1	
33	R87-8640	87-7510, 87-8640	Washer - Flat	1	
34	R3234-11	3234-11	Bolt - Hex Washer HD	4	
35	R3234-1	321-11, 3234-1	Bolt - Flanged Serrated Hex HD 3/8-16 x 3/4	3	
36	R323-8	01-150-0060, 01-178-0612, 20-49-AD, 20-49-AGD, 323-8, 3273-41, 908036P	Bolt - Hex HD 3/8-16 x 1-1/2 GR8	2	
37	R93-6842	93-6842	Bushing - Taper Lock 7/8	1	
<i>Tech Note: Fits Model 30826/30849:</i>					
37	R100-4813	100-4813	Bushing - Taper Lock	1	
38	R104-0464-03	104-0464-03, 99-3553, 99-3553-03	Bracket - Support	1	
39	R3234-5	3234-5, 62-3310	Bolt - 5/16-18x3/4 Hx Ser Was HD	2	
40	R3296-29	1-804256, 3290-357, 3296-29, 915662P	Locknut - 5/16-18 ESNA	2	
41	R76-8640	76-8640	Stud - Traction	1	

All original equipment manufacturers names and part numbers are used for identification purposes only, and we are in no way implying that our products are original equipment parts. Prices subject to change without notice.



Replaces Toro Groundsmaster 3505-D Parts

*Traction Unit - Model 30826 & 30849
Hydrostat Neutral Arm*



Item No	R&R Part No.	OEM Part No.	Description	Qty Req	Order Quantity
42	R3-6498	3--6498, 3-6498, 47-8270	Washer - Thrust	1	
43	R256-113	256-113	Bushing - 3/4 ID x 1 1/8 Flange	2	
44	R302-60	302-60	Zerk - Grease 90 Deg.	1	
45	R32128-44	32128-44	Nut	2	
46	R104-0422	104-0422	Neutral Arm Assy	1	
47	R32128-43	30-8990, 32128-43, 3290-357	Nut - Flanged Whiz - 3/8-16	5	
48	R3296-39	32127-25, 32128-36, 3290-357, 3296-17, 3296-22, 3296-39, 915663P, 99-7443	Locknut - 3/8-16 Nylon	5	
49	R63-9750	63-9750, 64-9750	Mount - Rubber	3	
50	R100-4817	100-4817	Spacer - Bearing	1	
51	R251-259	251-259, 251-307	Bearing - Ball	1	
52	R3274-104	3274-104	Bolt - Hx Soc Button HD	1	
53	R150776	95-3857	Bolt - Button HD Soc CS 3/8-16 x 1-1/2	3	
54	R2844	2844	Washer	3	
55	R99-3594-03	99-3594-03	Lever - Pump	1	
56	R99-3598-03	120-5566, 99-3598-03	Hub Assy	1	

All original equipment manufacturers names and part numbers are used for identification purposes only, and we are in no way implying that our products are original equipment parts. Prices subject to change without notice.



Replaces Toro Groundsmaster 3505-D Parts



*Traction Unit - Model 30826 & 30849
Hydrostat Neutral Arm*

Item No	R&R Part No.	OEM Part No.	Description	Qty Req	Order Quantity
57	R301504	2296-42, 301504, 32127-24, 32128-33, 32146-17, 3296-16, 3296-42, 3296-42 , 915661P	Locknut - ESNA 1/4-20	1	
58	R3256-22	24-9-BD, 3-1032, 3256-1, 3256-22, 93-0954, 93-0989	Washer - Flat 1/4 Yellow	1	
59	R6050-103	48-8010, 48-8030	Washer - Flat	2	
60	R2411-41	2411-41	Rod End - Ball Joint	1	
61	R400112	321-8	Bolt - Hex HD 1/4-20 x 1-1/4	1	
62	R95-8960-03	95-8960, 95-8960-03	Bracket- Neutral	1	
63	R104-4890	104-4832, 104-4890	Pump - Piston	1	
65	R237-79	237-79	O-Ring	1	
66	R340-18	340-18	Hydraulic Fitting	1	
67	R95-3502	95-3502	Fitting - Elbow	1	
68	R99-3440	99-3440	Spacer	2	
69	R353-949	353-949, 60-3520	O-Ring	1	
70	R237-80	237-80, 327-80	O-Ring	1	

All original equipment manufacturers names and part numbers are used for identification purposes only, and we are in no way implying that our products are original equipment parts. Prices subject to change without notice.



Replaces Toro Groundsmaster 3505-D Parts

*Traction Unit - Model 30826 & 30849
Hydrostat Neutral Arm*



Item No	R&R Part No.	OEM Part No.	Description	Qty Req	Order Quantity
71	R237-65	237-65, 237.65	O-Ring	2	
72	R340-17	340-17	No 10 Male Orfs x No 10 Male Orb	1	
73	R108-9036	100-1646, 108-9036	Hydraulic Gear Pump	1	
74	R237-42	237-42, 31-4160	O-Ring	2	
75	R340-77	340-100, 340-77, 95-7889	Hydraulic Fitting	1	
76	R400264	01-150-0180, 01-178-0610, 20-48-AD, 20-48-AGD, 32-9160, 3224-3, 323-29, 323-7, 400264, 908035P	Bolt - Hex HD 3/8-16 x 1-1/4	2	

All original equipment manufacturers names and part numbers are used for identification purposes only, and we are in no way implying that our products are original equipment parts. Prices subject to change without notice.



Replaces Toro Groundsmaster 3505-D Parts



*Traction Unit - Model 30826 & 30849
Hydrostat Neutral Arm*

Item No	R&R Part No.	OEM Part No.	Description	Qty Req	Order Quantity
77	R453011	01-166-0100, 01-166-0120, 01-166-0270, 01-166-0500, 01-166-0600, 01-166-0620, 132-4593, 2356-3, 237-12, 24-10-AD, 24-11-AD, 24-11-BD, 24-12-AD, 24-12-BD, 30-9310, 32-8190, 3256-24, 3256-3, 3256-36, 3256-4, 453011, 47-9950, 48-9220, 513458, 7-0052	Washer - Flat 3/8 SAE Y/Zinc	7	
78	R323-19	323-19	Bolt - Hx HD 3/8-16 x 1 5/8	2	
79	R99-3436-03	99-3436, 99-3436-03	Support- Pump	1	
80	R340-139	340-139	Hydraulic Fitting - 90 Deg	1	
81	R237-81	237-81, 237.81, 327-81	O-Ring	2	
82	R340-8	340-8	Adapter	1	
83	R94-1369	94-1369	Spring - Extension	1	
84	R99-3625	99-3625	Spacer - Ar - Idler	1	
85	R95-8941	95-8941	Spacer - Pump Mount	4	

All original equipment manufacturers names and part numbers are used for identification purposes only, and we are in no way implying that our products are original equipment parts. Prices subject to change without notice.



Replaces Toro Groundsmaster 3505-D Parts



*Traction Unit - Model 30826 & 30849
Hydrostat Neutral Arm*

Item No	R&R Part No.	OEM Part No.	Description	Qty Req	Order Quantity
86	R2412-34	2412-34, 31-0120	Clamp - Hose .75-1.5	1	

All original equipment manufacturers names and part numbers are used for identification purposes only, and we are in no way implying that our products are original equipment parts. Prices subject to change without notice.