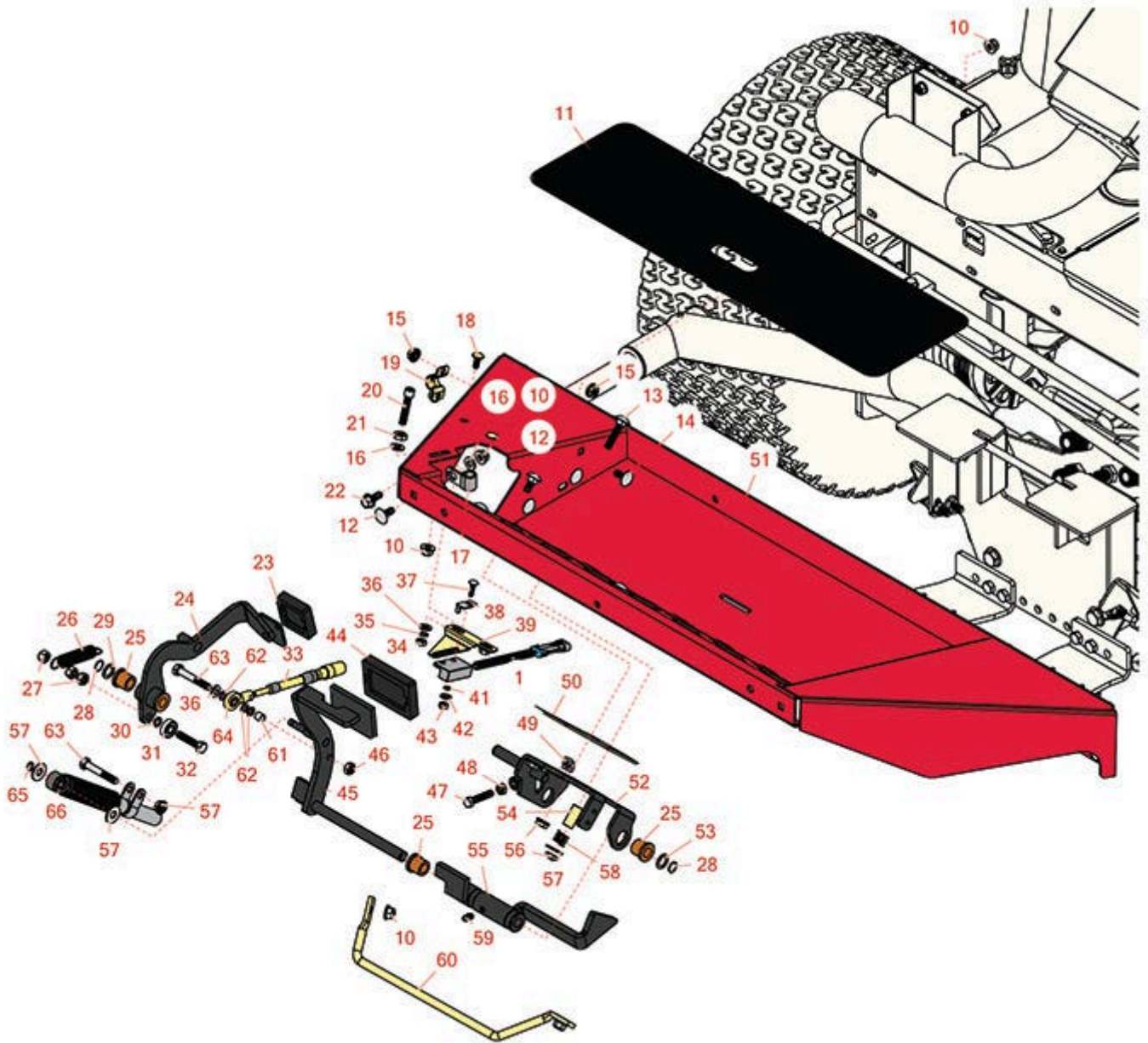




Replaces Toro Groundsmaster 3505-D Parts

*Traction Unit - Model 30826 & 30849
Front Platform & Traction Control*

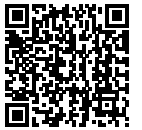


All original equipment manufacturers names and part numbers are used for identification purposes only, and we are in no way implying that our products are original equipment parts. Prices subject to change without notice.



Replaces Toro Groundsmaster 3505-D Parts

*Traction Unit - Model 30826 & 30849
Front Platform & Traction Control*



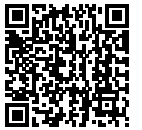
Item No	R&R Part No.	OEM Part No.	Description	Qty Req	Order Quantity
Gauges and Controls					
1	R100-1270	100-1270	Sensor - Proximity	1	
Other Parts Available					
10	R445722	30-8980, 32128-2, 32128-20, 32128-20, 445722	Nut - Serrated Washer	22	
11	R99-3478	99-3478	Pad - Anti Skid	1	
12	R3230-23	3230-23, Mar-61	Bolt - 5/16-18x3/4 - Carriage	5	
13	R3230-6	3230-6	Bolt - Carriage	1	
14	R112-6950	112-6950, 3230-27	Bolt - Carriage 5/16-18 x 1-1/2	3	
16	R453009	01-166-0400, 24-10-BD, 24-9-AD, 32-9650, 3256-2, 3256-23, 3256-3, 3256-67, 3290-217, 3556-3, 4-2390, 7-0152	Washer - Flat 5/16 SAE	3	
17	R2412-103	2412-103	Clamp	1	
18	R3229-1	01-173-0406, 01-178-0408, 3229-1, 3229-25, 900015P	Bolt - 1/4-20 x 3/4 - Carriage	2	
19	R93-2092	93-2092	Clamp - Cable	1	

All original equipment manufacturers names and part numbers are used for identification purposes only, and we are in no way implying that our products are original equipment parts. Prices subject to change without notice.



Replaces Toro Groundsmaster 3505-D Parts

*Traction Unit - Model 30826 & 30849
Front Platform & Traction Control*



Item No	R&R Part No.	OEM Part No.	Description	Qty Req	Order Quantity
20	R330748	3274-22, 330748	Screw - 5/16-18x1 Socket HD	1	
21	R443106	01-188-0518, 22-12-AJD, 32111-4, 3217-4, 3217-6, 3218-2, 513295, 513412, 915112P, 915978, 915979	Nut - 5/16-18 Y/Zinc Plated	1	
22	R3234-5	3234-5, 62-3310	Bolt - 5/16-18x3/4 Hx Ser Was HD	10	
23	R74-9110	74-9110	Rubber Foot Pad - Reverse	1	
24	R99-3379	99-3379	Pedal - Reverse	1	
25	R256-243	256-243	Bearing - Flange	4	
26	R99-3476	99-3476	Spring - Extension	1	
27	R3296-47	3296-47	Locknut - 5/16-18 Jam Nyloc	3	
28	R32151-84	32120-3, 32120-80, 32151-84	Ring - Shaft - Ext	2	
29	R455012	3256-26, 41-8440	Washer - Flat 1/2 x 3/4	1	
30	R75-5470	75-5470	Spacer - Bearing	1	
31	R251-259	251-259, 251-307	Bearing - Ball	1	

All original equipment manufacturers names and part numbers are used for identification purposes only, and we are in no way implying that our products are original equipment parts. Prices subject to change without notice.



Replaces Toro Groundsmaster 3505-D Parts

*Traction Unit - Model 30826 & 30849
Front Platform & Traction Control*



Item No	R&R Part No.	OEM Part No.	Description	Qty Req	Order Quantity
32	R322-7	01-150-0750, 01-150-0760, 01-178-0512, 20-28-AD, 20-28-AGD, 322-7, 3223-4	Bolt - Hex HD 5/16-18 x 1-1/2	1	
33	R100-4815	100-4815	Cable - Traction Control	1	
34	R443102	01-188-0420, 22-11-AJD, 3217-5, 33024-00	Nut - 1/4-20 Yellow Zinc	2	
35	R3255-7	3255-7, 76-5310	Washer - Lock 1/4 Ext Star Z	2	
36	R3256-22	24-9-BD, 3-1032, 3256-1, 3256-22, 93-0954, 93-0989	Washer - Flat 1/4 Yellow	3	
37	R3229-20	3229-20	Screw - 3/16-24 x 3/4 Carr	1	
38	R100-4872	100-4872, 104-7702	Plate-Switch - Neutral	1	
39	R100-4871	100-4871	Bracket - Neutral Switch	1	
41	R3256-14	24-7-BD, 32125-2, 3256-14, 3256-51, 51-2170	Washer - 10 Flat	1	
42	R3255-17	3255-17	Washer - Lock - Ext	1	
43	R3296-2	32127-10, 3296-2, 9157404	Nut - #10 Lock	1	
44	R74-9100	74-9100	Rubber Foot Pad - Forward	1	

All original equipment manufacturers names and part numbers are used for identification purposes only, and we are in no way implying that our products are original equipment parts. Prices subject to change without notice.



Replaces Toro Groundsmaster 3505-D Parts

*Traction Unit - Model 30826 & 30849
Front Platform & Traction Control*



Item No	R&R Part No.	OEM Part No.	Description	Qty Req	Order Quantity
45	R104-4852-03	104-4852-03, 99-3564	Traction Pedal Assy	1	
46	R301504	2296-42, 301504, 32127-24, 32128-33, 32146-17, 3296-16, 3296-42, 3296-42 , 915661P	Locknut - ESNA 1/4-20	1	
47	R322-41	322-41	Bolt - Hx HD	1	
48	RP457-2	01-191-0518, 22-12-AJK, 3218-2, 513299, P457-2	Nut - Jam 5/16-18 Zinc	1	
49	R99-3565	99-3565	Nut - Square	1	
50	R106-2661-01	106-2661-01	Plate - Support	1	
51	R106-4154	106-4154	Floorplate Assy	1	
52	R95-8869-03	95-8869, 95-8869-03	Bracket - Traction Pedal	1	
53	R73-0040	73-0040	Washer - Thrust	1	
54	R95-8866	95-8866	Tube- Rocker Arm	1	
55	R95-8861	95-8861	Slide	1	
56	R3296-29	1-804256, 3290-357, 3296-29, 915662P	Locknut - 5/16-18 ESNA	1	

All original equipment manufacturers names and part numbers are used for identification purposes only, and we are in no way implying that our products are original equipment parts. Prices subject to change without notice.



Replaces Toro Groundsmaster 3505-D Parts



*Traction Unit - Model 30826 & 30849
Front Platform & Traction Control*

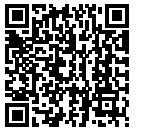
Item No	R&R Part No.	OEM Part No.	Description	Qty Req	Order Quantity
57	R453011	01-166-0100, 01-166-0120, 01-166-0270, 01-166-0500, 01-166-0600, 01-166-0620, 132-4593, 2356-3, 237-12, 24-10-AD, 24-11-AD, 24-11-BD, 24-12-AD, 24-12-BD, 30-9310, 32-8190, 3256-24, 3256-3, 3256-36, 3256-4, 453011, 47-9950, 48-9220, 513458, 7-0052	Washer - Flat 3/8 SAE Y/Zinc	3	
58	R65-9940	65-9940	Spring	1	
59	R302-5	21-6010, 302-11, 302-37, 302-47, 302-5, 302-57, 302-58, 302-6, 31-0300, 32-9660, 60-0800, 62-3880, 92-4181	Fitting - Grease	1	
60	R95-8893	95-8893	Bar - Deflector	1	
61	R99-3545	99-3545	Spacer	1	

All original equipment manufacturers names and part numbers are used for identification purposes only, and we are in no way implying that our products are original equipment parts. Prices subject to change without notice.



Replaces Toro Groundsmaster 3505-D Parts

*Traction Unit - Model 30826 & 30849
Front Platform & Traction Control*



Item No	R&R Part No.	OEM Part No.	Description	Qty Req	Order Quantity
62	R6050-103	48-8010, 48-8030	Washer - Flat	3	
63	R322-10	20-30-AD, 24-7180, 322-10, 322-10 , 3223-6, 513347	Bolt - Hex HD 5/16-18 x 2	2	
64	R2411-41	2411-41	Rod End - Ball Joint	1	
65	R32151-3	32151-3	Ring - Grip	1	
66	R76-8870	105-7280, 76-8870	Lever Damper Assy	1	

All original equipment manufacturers names and part numbers are used for identification purposes only, and we are in no way implying that our products are original equipment parts. Prices subject to change without notice.