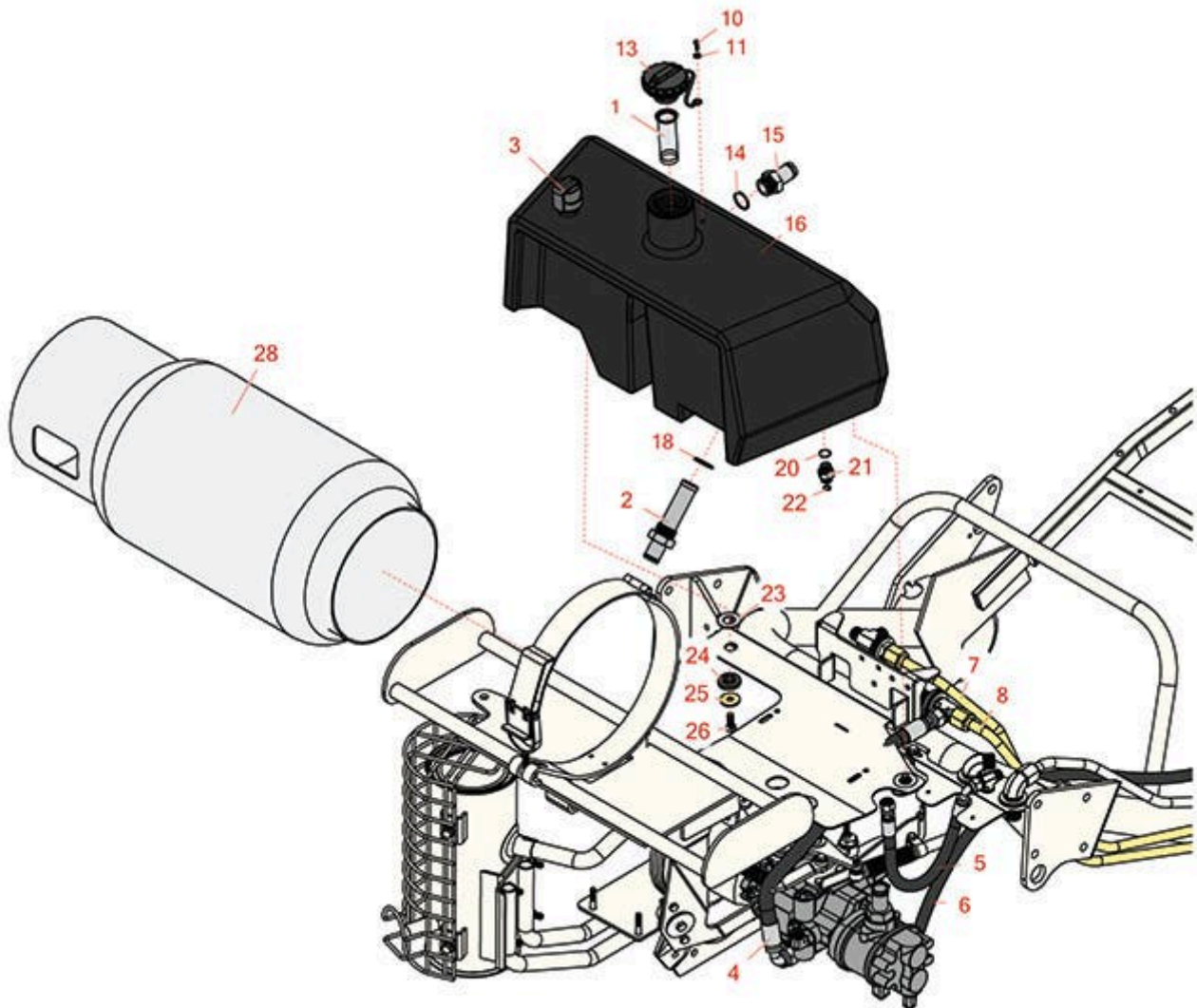




Replaces R&R Products Greens Max 2200LP Parts

*Traction Unit
Hydraulic & Fuel Tanks*



All original equipment manufacturers names and part numbers are used for identification purposes only, and we are in no way implying that our products are original equipment parts. Prices subject to change without notice.



Replaces R&R Products Greens Max 2200LP Parts

*Traction Unit
Hydraulic & Fuel Tanks*



| Item No | R&R Part No. | OEM Part No. | Description | Qty Req | Order Quantity |
|---------|--------------|--------------|-------------|---------|----------------|
|---------|--------------|--------------|-------------|---------|----------------|

Filters

| | | | | | |
|---|------------------|-----------|---------------------------|---|--|
| 1 | R150309 | R83-1520 | Screen - Filler - Hyd Oil | 1 | |
| 2 | R150549 | R112-0211 | Strainer Assy | 1 | |
| 3 | R115-9793 | | Breather | 1 | |

Hoses

| | | | | | |
|---|------------------|--|---------------------|---|--|
| 4 | R99-6193 | | Hydraulic Hose Assy | 1 | |
| 5 | R105-5409 | | Hydraulic Hose Assy | 1 | |
| 6 | R105-4340 | | Hydraulic Hose Assy | 1 | |
| 7 | R112-0204 | | Tube-Hyd | 1 | |
| 8 | R112-0203 | | Tube-Hyd | 1 | |

Other Parts Available

| | | | | | |
|----|-----------------|-----------------------|---------------------------------------|---|--|
| 10 | R300104 | | Screw - Button HD Cap 10-32 x 5/8 | 1 | |
| 11 | R43-5930 | R01-176-0030 | Washer - Lock M6 | 1 | |
| 13 | R93-7160 | R92-6342, R93-3103 | Cap - Hyd Oil w/Tether | 1 | |
| 14 | R237-177 | | O-Ring - Str Fitting - Poly Tank | 1 | |
| 15 | R83-0870 | R83-0870-01 | Hydraulic Fitting - Straight Hose | 1 | |
| 16 | R150306 | | Tank - Hydraulic | 1 | |
| 18 | R237-146 | R340-146 | O-Ring | 1 | |
| 20 | R237-79 | | O-Ring | 1 | |
| 21 | R340-3 | | Hydraulic Fitting - Adapter Connector | 1 | |

All original equipment manufacturers names and part numbers are used for identification purposes only, and we are in no way implying that our products are original equipment parts. Prices subject to change without notice.



Replaces R&R Products Greens Max 2200LP Parts

*Traction Unit
Hydraulic & Fuel Tanks*



| Item No | R&R Part No. | OEM Part No. | Description | Qty Req | Order Quantity |
|---------|-----------------|--|---------------------------------|---------|----------------|
| 22 | R237-22 | R107-8844, R232-72, R237-78 | O-Ring | 1 | |
| 23 | R83-2400 | | Spacer | 3 | |
| 24 | R240-11 | | Bushing - Rubber - Flanged | 3 | |
| 25 | R63-8410 | R53-6380, R63-4810 | Washer - Isolator Bushing | 3 | |
| 26 | R323-6 | 323-6, R01-150-0010, R01-178-0608, R20-47-AD, R20-47-AGD, R3224-2, R49-3510, R908034P, R908332 | Bolt - Hex HD 3/8-16 x 1 GR5 YZ | 3 | |
| 28 | R151330 | | Cylinder - 33.5lb Propane | 1 | |

All original equipment manufacturers names and part numbers are used for identification purposes only, and we are in no way implying that our products are original equipment parts. Prices subject to change without notice.