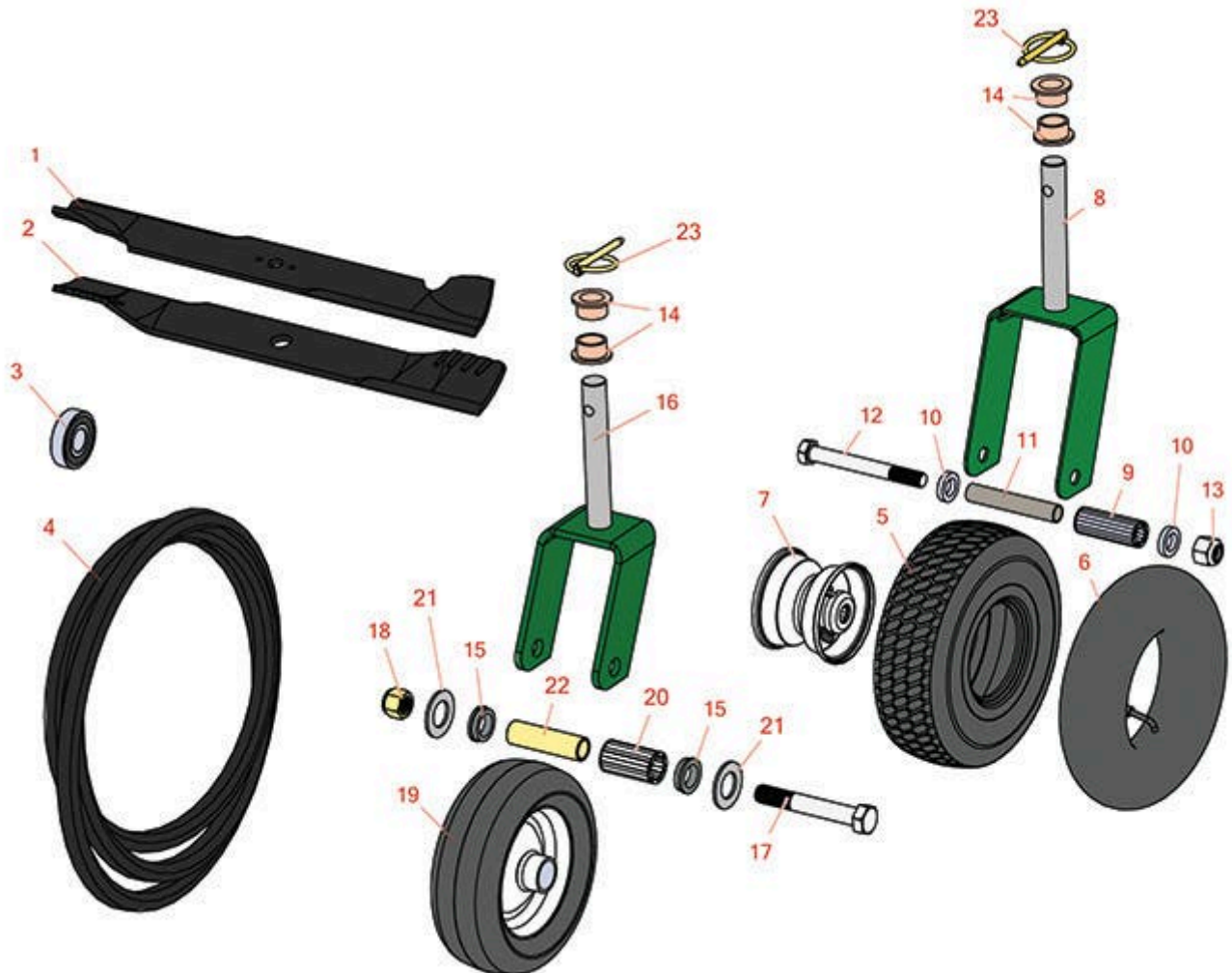




# Replaces Ransomes Bobcat 48", 61" & 74" Parts

Rotary Mower  
Rotary Parts



All original equipment manufacturers names and part numbers are used for identification purposes only, and we are in no way implying that our products are original equipment parts. Prices subject to change without notice.



# Replaces Ransomes Bobcat 48", 61" & 74" Parts

Rotary Mower  
Rotary Parts



Item No	R&R Part No.	OEM Part No.	Description	Qty Req	Order Quantity
1	<b>R32061</b>	32061	Mower Blade - Cutter 48 Deck	3	
1	<b>RRB3080-2101</b>	42180	Mower Blade - High-Lift 21 x 2.5in x 5/8 Mt Hole	3	
<i>Detail Description: R&amp;R Products rotary blades are manufactured in the USA with superior alloy steel and hardened for extended life. Lifetime guaranteed against defects in material and workmanship.:</i>					
1	<b>R112111-01</b>	112111-01	Mower Blade - Offset 48 Deck	3	
1	<b>R112111-03</b>	112111-03	Mower Blade - Offset 61 Deck	3	
1	<b>R112111-04</b>	112111-04	Mower Blade - Offset 74 Deck	3	
2	<b>R32061M</b>		Mower Blade - Cutter 48 Deck Gator Mulch	3	
2	<b>R42180M</b>	42180M	Mower Blade - 61 Deck Gator Mulch	3	
2	<b>R42139M</b>		Mower Blade - 74 Deck Gator Mulch	3	
3	<b>R35008</b>	35008	Bearing - Spindle	6	
4	<b>R69-6220</b>	48047A	Belt - Main Drive	1	
4	<b>R48238A</b>	48238A	Belt - Deck (Fits 74)	1	
4	<b>R48280A</b>	48280A	Belt - Deck (Fits 48)	1	

## Replaces 11" Pneumatic Caster Wheel & Fork

5	<b>RCT5190261</b>	48248	Tire - 410-4 Nhs (4 Ply) Carlisle Sawtooth	2	
<i>Detail Description: Upgrade your utility-based equipment with the reliable and versatile Carlisle Sawtooth tire. Designed for a wide range of applications, enjoy the smooth rolling performance, traction, and durability this tire offers. Whether you need it for wheelbarrows, pressure washers, generators, hand trucks, or lawn equipment, the Sawtooth tire is your go-to choice. Don't settle for subpar tires that compromise your productivity. Get ready to conquer your tasks with ease and efficiency.:</i>					

All original equipment manufacturers names and part numbers are used for identification purposes only, and we are in no way implying that our products are original equipment parts. Prices subject to change without notice.



# Replaces Ransomes Bobcat 48", 61" & 74" Parts

Rotary Mower  
Rotary Parts



Item No	R&R Part No.	OEM Part No.	Description	Qty Req	Order Quantity
6	<b>R48251</b>	48251	Tube - 4.10x350-4	2	
7	<b>R48252</b>	48252	Wheel - Less Tire/Tube	2	
8	<b>R46234A</b>	46234A	Caster Fork - 61/74DECKS	2	
8	<b>R146089</b>	146089	Caster Fork	2	
9	<b>R48250</b>	48250	Bearing - 3/4IDTS R48252	2	
9	<b>R170341</b>		Bearing - 3/4 x 1-3/8 x 3	2	
10	<b>R64163-14</b>	64163-14	Washer - Spacer Caster	8	
11	<b>R43119</b>	43119	Spacer - Caster Wheel	2	
12	<b>R64123-118</b>	64123-118	Bolt - Caster Fork 5/8 x 5-3/4	2	
13	<b>R64151-6</b>	64151-6	Locknut - 5/8-11	2	

## Replaces 8" Semi-Pneumatic Caster Wheel & Fork

14	<b>R48053-2A</b>	48053-2A	Bushing - Flanged Caster	4	
15	<b>R170343</b>		Bushing - Fits Caster Wh	4	
16	<b>R36250</b>	36250, 46028A	Caster Fork - 8 Semi-Pneu	2	
17	<b>R328-9</b>	64123-86	Capscrew - 3/4-10 x 5	2	
18	<b>R32153-6</b>	64151-12	Locknut - 3/4-10 ESNA Zinc	2	
19	<b>R38175</b>	38175, 48040A	Wheel - Semi Pneu. Caster Assy	2	
<i>Detail Description: Includes R170342 &amp; R170343:</i>					
20	<b>R48223N</b>	48223N	Bearing - 1 ID Fits R38175	2	
20	<b>R170342</b>		Bearing - Caster Wheel	2	
21	<b>R21-6540W</b>	64123-25	Washer - Grooved Rlr 2 OD x 1 ID	4	

All original equipment manufacturers names and part numbers are used for identification purposes only, and we are in no way implying that our products are original equipment parts. Prices subject to change without notice.



# Replaces Ransomes Bobcat 48", 61" & 74" Parts

*Rotary Mower  
Rotary Parts*



Item No	R&R Part No.	OEM Part No.	Description	Qty Req	Order Quantity
22	<b>R27-1200</b>	43073A	Spacer - Front Deck Wheel	2	
23	<b>R64173-03</b>	64173-03	Pin - Lynch	2	

All original equipment manufacturers names and part numbers are used for identification purposes only, and we are in no way implying that our products are original equipment parts. Prices subject to change without notice.