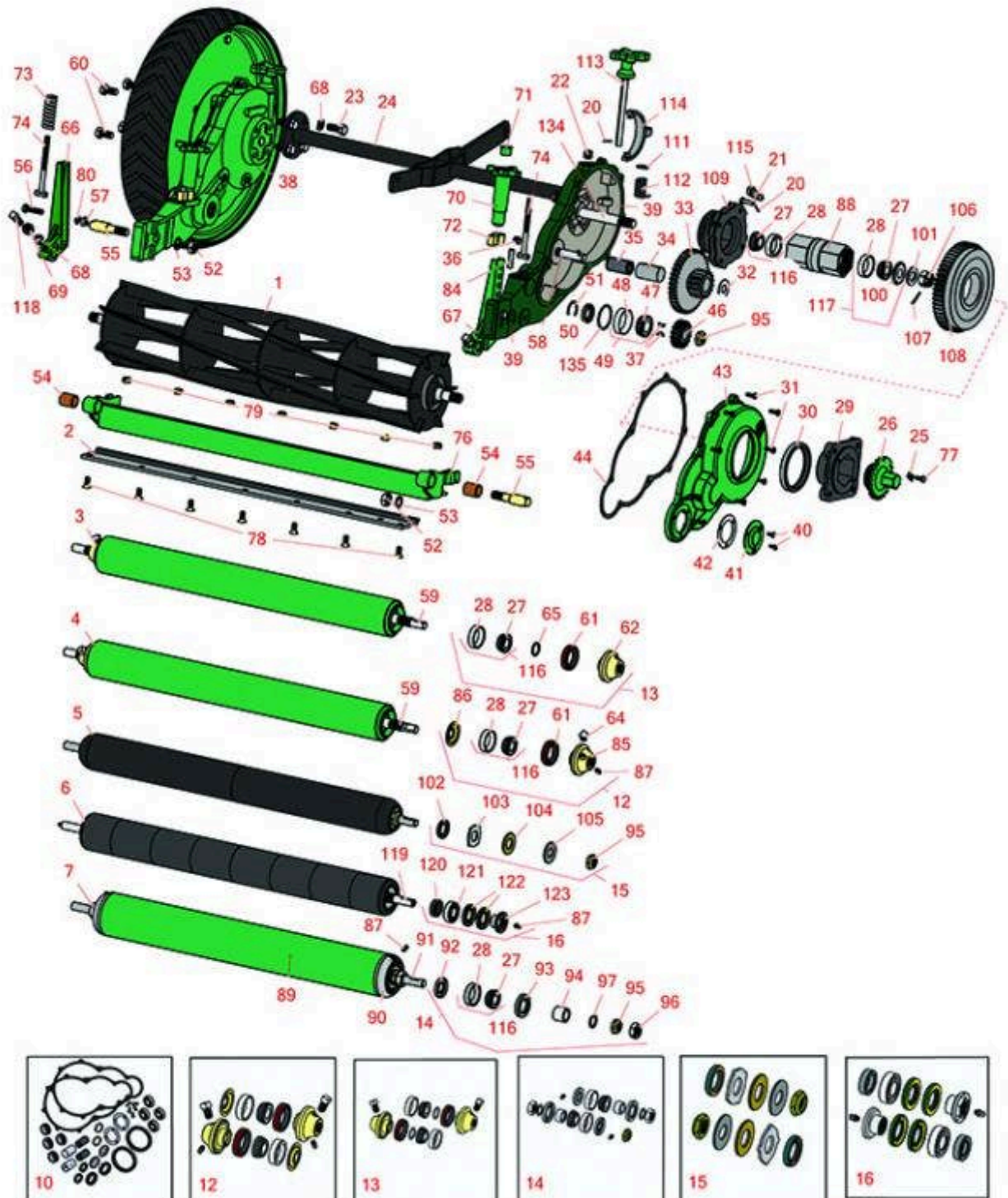




Replaces Lesco Fairway Parts

Reel & Bedknife



All original equipment manufacturers names and part numbers are used for identification purposes only, and we are in no way implying that our products are original equipment parts. Prices subject to change without notice.



Replaces Lesco Fairway Parts

Reel & Bedknife



Item R&R
No Part No.

OEM
Part No.

Description

Qty
Req

Order
Quantity

R&R Reels, Lifetime Guaranteed

Item No	R&R Part No.	OEM Part No.	Description	Qty Req	Order Quantity
1	R502671	011150	Reel - 6 Blade	1	

Detail Description: R&R Reel blades are expertly crafted from premium high carbon-boron alloy steel, heat-treated to perfectly complement both R&R and OEM bedknives. Each reel undergoes precision cylindrical grinding on bearing surfaces, followed by relief grinding for optimal performance. Advanced computer balancing ensures extended reel and bearing life. Backed by our lifetime guarantee against defects in materials and craftsmanship under normal use, R&R Reels deliver unmatched durability and cutting precision you can trust.:

1	R502672		Reel - 8 Blade	1	
---	----------------	--	----------------	---	--

Detail Description: R&R Reel blades are expertly crafted from premium high carbon-boron alloy steel, heat-treated to perfectly complement both R&R and OEM bedknives. Each reel undergoes precision cylindrical grinding on bearing surfaces, followed by relief grinding for optimal performance. Advanced computer balancing ensures extended reel and bearing life. Backed by our lifetime guarantee against defects in materials and craftsmanship under normal use, R&R Reels deliver unmatched durability and cutting precision you can trust.:

1	R502675	012619	Reel - 10 Blade	1	
---	----------------	--------	-----------------	---	--

Detail Description: R&R Reel blades are expertly crafted from premium high carbon-boron alloy steel, heat-treated to perfectly complement both R&R and OEM bedknives. Each reel undergoes precision cylindrical grinding on bearing surfaces, followed by relief grinding for optimal performance. Advanced computer balancing ensures extended reel and bearing life. Backed by our lifetime guarantee against defects in materials and craftsmanship under normal use, R&R Reels deliver unmatched durability and cutting precision you can trust.:

1	R502676	012618	Reel - 5 Blade	1	
---	----------------	--------	----------------	---	--

Detail Description: R&R Reel blades are expertly crafted from premium high carbon-boron alloy steel, heat-treated to perfectly complement both R&R and OEM bedknives. Each reel undergoes precision cylindrical grinding on bearing surfaces, followed by relief grinding for optimal performance. Advanced computer balancing ensures extended reel and bearing life. Backed by our lifetime guarantee against defects in materials and craftsmanship under normal use, R&R Reels deliver unmatched durability and cutting precision you can trust.:

R&R Bedknives, Lifetime Guaranteed

2	R325163	002819	Bedknife - 30" 7 Hole	1	
---	----------------	--------	-----------------------	---	--

All original equipment manufacturers names and part numbers are used for identification purposes only, and we are in no way implying that our products are original equipment parts. Prices subject to change without notice.



Replaces Lesco Fairway Parts

Reel & Bedknife



Item No	R&R Part No.	OEM Part No.	Description	Qty Req	Order Quantity
---------	--------------	--------------	-------------	---------	----------------

Detail Description: R&R Bedknives are manufactured from high carbon-boron alloy steel and then hardened to RC46-49 to match the temper of our reel blades and original equipment reels. Bedknives are surface ground on the top and front edge and straightened three times before being packaged with oil for rust prevention. All R&R Bedknives now have an increased front edge grind for added life. All R&R Bedknives are guaranteed against defects in material and workmanship under normal use for the life of the part.:

2	R101251		Bedknife - Double Lip Fwy	1	
---	----------------	--	---------------------------	---	--

Detail Description: R&R Bedknives are manufactured from high carbon-boron alloy steel and then hardened to RC46-49 to match the temper of our reel blades and original equipment reels. Bedknives are surface ground on the top and front edge and straightened three times before being packaged with oil for rust prevention. All R&R Bedknives now have an increased front edge grind for added life. All R&R Bedknives are guaranteed against defects in material and workmanship under normal use for the life of the part.:

R&R Rollers

3	R009225	009225	Roller - Smooth Tubular Steel Oil Filled	1	
---	----------------	--------	--	---	--

4	R700500G		Roller - Smooth Tubular Steel Regreasable	1	
---	-----------------	--	---	---	--

Tech Note: Constructed with a through shaft, this heavy duty roller uses greasable tapered bearings for extended life.:

Detail Description: Constructed with a through shaft, this heavy duty roller uses greasable tapered bearings for extended life.:

5	R1013902		Roller - Smooth UHMW Polyethylene	1	
---	-----------------	--	-----------------------------------	---	--

Tech Note: Machined from solid UHMW, this low maintenance roller uses a 1" solid stainless steel shaft and requires no grease. UHMW material prevents build-up of debris.:

Detail Description: Machined from solid UHMW, this low maintenance roller uses a 1" solid stainless steel shaft and requires no grease. UHMW material prevents build-up of debris.:

6	R1013910		Roller - Fusion Smooth UHMW Polyethylene	1	
---	-----------------	--	--	---	--

Tech Note: Machined from solid UHMW plastic that prevents build-up of debris. This roller turns on precision stainless ball bearings.:

Detail Description: Machined from solid UHMW plastic that prevents build-up of debris. This roller turns on precision stainless ball bearings.:

All original equipment manufacturers names and part numbers are used for identification purposes only, and we are in no way implying that our products are original equipment parts. Prices subject to change without notice.



Replaces Lesco Fairway Parts

Reel & Bedknife



Item No	R&R Part No.	OEM Part No.	Description	Qty Req	Order Quantity
7	R026599	026599	Roller	1	

Overhaul Kits

10	R500600		Overhaul Kit - Cutting Unit	1	
----	----------------	--	-----------------------------	---	--

Tech Note: Includes 18 ea: R407706 Screws; 6 ea: R254-78 Bearings, R254-79 Bearing Cups; 2 ea: R302755 Cups, R311957 Rings, R315872 Seals, R315873 Seals, R315876 Gaskets, R315914 Bearings, R315928 Gaskets, R315967 Seals, R315977 Bearings; 1... <Click Part# for more>:

Detail Description: Includes 18 ea: R407706 Screws; 6 ea: R254-78 Bearings, R254-79 Bearing Cups; 2 ea: R302755 Cups, R311957 Rings, R315872 Seals, R315873 Seals, R315876 Gaskets, R315914 Bearings, R315928 Gaskets, R315967 Seals, R315977 Bearings; 1 ea: R315910 Spacer R315978 sleeve, R328062 Seal;:

12	R700505		Conversion Kit - Roller	1	
----	----------------	--	-------------------------	---	--

Tech Note: Includes: 2 each: R254-78 Bearing Cones, R254-79 Bearing Cups, R328062 Seals, R412063 Square Head Set Screws, R700501 Roller Ends & R700502 Grease Retainers.:

Detail Description: Includes: 2 each: R254-78 Bearing Cones, R254-79 Bearing Cups, R328062 Seals, R412063 Square Head Set Screws, R700501 Roller Ends & R700502 Grease Retainers.:

13	R100140		Overhaul Kit - Oil Filled Roller	1	
----	----------------	--	----------------------------------	---	--

Tech Note: Includes 2 ea.: R500574 Roller Collar, R500534 Bearing Cup & Cone, R459007 O-ring, R328062 Seal, R412063 Screw:

Detail Description: Includes 2 ea.: R500574 Roller Collar, R500534 Bearing Cup & Cone, R459007 O-ring, R328062 Seal, R412063 Screw:

14	R100165		Overhaul Kit - Roller	1	
----	----------------	--	-----------------------	---	--

Tech Note: Includes 2 ea.: R253-117 Seals, R253-122 Seals, R254-78 Bearings, R254-79 Bearing Cups, R302-5 Grease Fittings, R3220-7 Nuts, R47-7510 Washers, R5-4523 Sleeves; 1 ea.: R3296-15 Locknut:

Detail Description: Includes 2 ea.: R253-117 Seals, R253-122 Seals, R254-78 Bearings, R254-79 Bearing Cups, R302-5 Grease Fittings, R3220-7 Nuts, R47-7510 Washers, R5-4523 Sleeves; 1 ea.: R3296-15 Locknut:

15	R101399		Overhaul Kit - UHMW 2 Pc Roller	1	
----	----------------	--	---------------------------------	---	--

Tech Note: Fits all R&R 2-1/2" - 3-1/2" Dia. Black UHMW Plastic Rollers that do not use ball bearings.. Includes 2 ea.: R1503230 Star Washers, R1503470 Seals, R150333 Thrust Washers, R3296-15 Locknuts, R1503471 Bronze Thrust Washers:

All original equipment manufacturers names and part numbers are used for identification purposes only, and we are in no way implying that our products are original equipment parts. Prices subject to change without notice.



Replaces Lesco Fairway Parts

Reel & Bedknife



Item No	R&R Part No.	OEM Part No.	Description	Qty Req	Order Quantity
---------	--------------	--------------	-------------	---------	----------------

Detail Description: Fits all R&R 2-1/2" - 3-1/2" Dia. Black UHMW Plastic Rollers that do not use ball bearings.. Includes 2 ea.: R1503230 Star Washers, R1503470 Seals, R150333 Thrust Washers, R3296-15 Locknuts, R1503471 Bronze Thrust Washers:

16	R114-5430		Overhaul Kit - Roller	1
----	------------------	--	-----------------------	---

Tech Note: Includes 4 ea.: R112-7494 Seals; 2 ea.: R302-5 Grease Zerk, R114-3717 Seals, R112-5290 Bearings & R114-3745 Locknuts:

Detail Description: Includes 4 ea.: R112-7494 Seals; 2 ea.: R302-5 Grease Zerk, R114-3717 Seals, R112-5290 Bearings & R114-3745 Locknuts:

Other Parts Available

20	R460012	003145	Pin - Cotter 3/32 x 3/4	8
----	----------------	--------	-------------------------	---

21	R315867	002533	Pin - Hardened Pawl	8
----	----------------	--------	---------------------	---

22	R472205	002834	Plug - 3/8	2
----	----------------	--------	------------	---

23	R400406	002924	Bolt - Hex HD 1/2-13 x 1-1/4	8
----	----------------	--------	------------------------------	---

24	R108096G	009215	Axle - Main Pgf	1
----	-----------------	--------	-----------------	---

25	R327676	002050	Tab - Locking	2
----	----------------	--------	---------------	---

26	R204119G	009222	Cap - Hub	2
----	-----------------	--------	-----------	---

27	R254-78		Tapered Bearing Cone	2
----	----------------	--	----------------------	---

28	R254-79		Cup - Bearing	2
----	----------------	--	---------------	---

Tech Note: Use R254-79M installation mandrel to properly install race.:

Detail Description: Use R254-79M installation mandrel to properly install race.:

29	R203984	009223	Hub - Ground Wheel	2
----	----------------	--------	--------------------	---

30	R315967	002741	Seal - Cover	2
----	----------------	--------	--------------	---

31	R407706	002976	Screw - Housing Cover	18
----	----------------	--------	-----------------------	----

32	R302295	002766	Washer	2
----	----------------	--------	--------	---

33	R331834	002885	Gear - Int. Ductile Steel	2
----	----------------	--------	---------------------------	---

All original equipment manufacturers names and part numbers are used for identification purposes only, and we are in no way implying that our products are original equipment parts. Prices subject to change without notice.



Replaces Lesco Fairway Parts

Reel & Bedknife



Item No	R&R Part No.	OEM Part No.	Description	Qty Req	Order Quantity
34	R315978	002767	Sleeve - Bearing	2	
35	R315977	002754	Bearing - Int Gear	2	
36	R472203	010818	Plug - 1/4	2	
37	R315877	002585	Key - Pinion Gear	4	
38	R154499G	009216	Housing - Gear LH	1	
39	R154500G	009217	Housing - Gear RH	1	
40	R408052	017192	Screw - 12-24 x 1/2 Bind HD	10	
41	R352635G	009224	Cap - Cover	2	
42	R315876	002572	Gasket - Insp Plate	2	
43	R203986G	009228	Cover - Housing	2	
44	R315928	002663	Gasket - Cover	2	
46	R315843	002494	Gear - Pinion	2	
47	R315914		Tapered Bearing Cone	2	
48	R302755		Cup - Bearing	2	
49	R500711		Bearing - with Cup	2	
50	R315872	002546	Seal - Reel	2	
51	R315873	008290	Seal - Washer	2	
52	R443828	003015	Nut - 5/8-18 Hex	2	
53	R447224	003106	Washer - Lock 5/8 Int Star Z	2	
54	R545723	002637	Bushing - For Backing Stud	2	
55	R315909	002611	Stud - Bedknife Backing	2	
55	R500264		Stud - with Bushing	2	

All original equipment manufacturers names and part numbers are used for identification purposes only, and we are in no way implying that our products are original equipment parts. Prices subject to change without notice.



Replaces Lesco Fairway Parts

Reel & Bedknife



Item No	R&R Part No.	OEM Part No.	Description	Qty Req	Order Quantity
56	R400266	011075	Bolt - Hex HD 3/8-16 x 1-1/2	2	
57	R444510	010799	Nut - 3/8-16 Sq.	2	
58	R315851	002507	Stud - Intermediate	2	
59	R328058	002833	Shaft - Roller	1	
60	R400438	010644	Bolt - Hex HD 1/2-20 x 1	6	
61	R328062	002859	Seal - Roller	2	
62	R500574	002846	Collar - Roller	2	
64	R412063	010757	Screw - Sq. HD. Set	2	
65	R459007	003132	O-Ring - Roller	2	
66	R500763G	009219	Bracket - Roller LH	1	
67	R500764G	009220	Bracket - Roller RH	1	
68	R446154	010734, 010873	Washer - Lock 1/2	2	
69	R443818	010778	Nut - 1/2-13 Hex Jam Zinc	2	
70	R500548G	009221	Handle - Adjusting	2	
71	R312794	002481	Plug - Adj. Handle	2	
72	R315964	002702	Spring - Friction	2	
73	R315966	002728	Spring - Adjusting	2	

Tech Note: Spring overall length is 2-3/4":

Detail Description: Spring overall length is 2-3/4":

73	R315844		Spring - Worn Reel	2	
----	----------------	--	--------------------	---	--

Tech Note: Special spring used for worn reels, 2-1/2" long:

Detail Description: Special spring used for worn reels, 2-1/2" long:

All original equipment manufacturers names and part numbers are used for identification purposes only, and we are in no way implying that our products are original equipment parts. Prices subject to change without notice.



Replaces Lesco Fairway Parts

Reel & Bedknife



Item No	R&R Part No.	OEM Part No.	Description	Qty Req	Order Quantity
74	R315965	002715	Screw - Adjusting Fairway	2	
<i>Tech Note: 4-1/2" overall length:</i>					
<i>Detail Description: 4-1/2" overall length:</i>					
76	R130304G	009211	Backing Bar - Bed Knife	1	
<i>Tech Note: Includes R545723:</i>					
<i>Detail Description: Includes R545723:</i>					
77	R400106	002898	Bolt - Hex HD 1/4-20 x 5/8	2	
78	R101270	002963	Screw - Bedknife 3/8-24 x 13/16	7	
79	R101271	003080	Nut - Bedknife	7	
80	R3254-6	010719, 010777	Washer - Lock 3/8	2	
84	R461406	003171	Pin - Roll	2	
85	R700501		Roller End - Regreasable	2	
86	R700502		Retainer - Grease	2	
87	R302-5	060078	Fitting - Grease	2	
88	R500236	002860	Cylinder - Wheel	2	
<i>Tech Note: Includes 1 R500533 & R500534:</i>					
<i>Detail Description: Includes 1 R500533 & R500534:</i>					
89	R5-3940	006612	Tube - Roller	1	
90	R4-5659	006586	Roller End	2	
91	R026597	026597	Shaft - Roller - Fits Lesco	1	
92	R253-122	005255	Seal	2	
93	R253-117	005268	Seal - Outer Triple Lip	2	

All original equipment manufacturers names and part numbers are used for identification purposes only, and we are in no way implying that our products are original equipment parts. Prices subject to change without notice.



Replaces Lesco Fairway Parts

Reel & Bedknife



Item No	R&R Part No.	OEM Part No.	Description	Qty Req	Order Quantity
94	R5-4523	006625	Sleeve - Roller	2	
95	R3296-15	006716	Locknut - 3/4-16 Nylon Jam	1	
96	R3220-7	010328	Nut - 3/4-16 Jam Zinc	2	
97	R47-7510		Washer - Nylon	2	
98	R500534	010710	Bearing - with Cup	4	
<i>Detail Description: Kit includes: 1 ea R254-78- Bearing Cone & R254-79 Bearing Cone:</i>					
99	R500533		Bearing - w/Cup and Ring	2	
100	R311957		Ring - Nilos	2	
101	R453022	003119	Washer - 3/4 SAE	2	
102	R1503470		Seal - Inner Wiper	2	
103	R1503230		Washer - Thrust Outer Keyed	2	
104	R1503471		Washer - Thrust SAE660 Bronze	2	
105	R150333		Washer - Flat Keyed Outer SS	2	
106	R445686	003067	Nut - 3/4-16 Castle	2	
107	R460028	003107	Pin - Cotter 1/8 x 1	2	
108	R203976	002701	Gear - Main Ductile Steel	2	
109	R203975	010322	Wheel - Pawl Carrier	2	
111	R315861	002520	Washer	2	
112	R316765	002793	Spring - RH	1	
112	R316766	002806	Spring - LH	1	
113	R153215G	009218	Handle - Release	2	
114	R203968	006121	Fork - Release	2	

All original equipment manufacturers names and part numbers are used for identification purposes only, and we are in no way implying that our products are original equipment parts. Prices subject to change without notice.



Replaces Lesco Fairway Parts

Reel & Bedknife



Item No	R&R Part No.	OEM Part No.	Description	Qty Req	Order Quantity
115	R204871	002727	Pawl - Main Gear Ductile	8	
116	R545515	002912	Stud - Ground Wheel	2	
117	R315910	010393	Spacer	1	
118	R412003	010874	Screw - 1/2-13 x 1-1/2 Sq HD	2	
119	R1013911		Shaft	1	
120	R114-3717		Seal	2	
121	R112-5290		Bearing - Stainless	2	
122	R112-7494		Seal	4	
123	R114-3745		Locknut - Bearing - Stainless	2	

All original equipment manufacturers names and part numbers are used for identification purposes only, and we are in no way implying that our products are original equipment parts. Prices subject to change without notice.