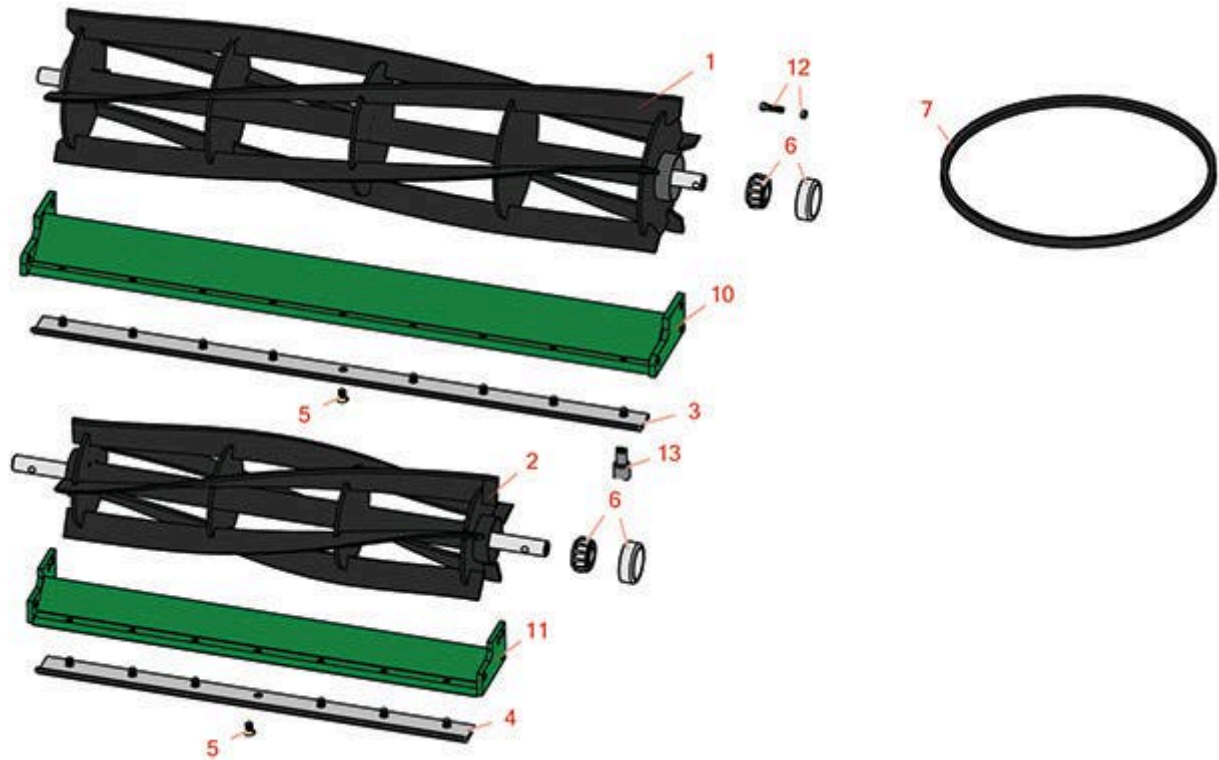




Replaces National 68 Mower Parts

Cutting Unit
Reel & Bedknife



All original equipment manufacturers names and part numbers are used for identification purposes only, and we are in no way implying that our products are original equipment parts. Prices subject to change without notice.



Replaces National 68 Mower Parts

Cutting Unit
Reel & Bedknife



Item No	R&R Part No.	OEM Part No.	Description	Qty Req	Order Quantity
---------	--------------	--------------	-------------	---------	----------------

R&R Reels, Lifetime Guaranteed

1	RE318	E318	Reel - 5 Blade Rear Unit	1
---	--------------	------	--------------------------	---

Detail Description: R&R Reel blades are expertly crafted from premium high carbon-boron alloy steel, heat-treated to perfectly complement both R&R and OEM bedknives. Each reel undergoes precision cylindrical grinding on bearing surfaces, followed by relief grinding for optimal performance. Advanced computer balancing ensures extended reel and bearing life. Backed by our lifetime guarantee against defects in materials and craftsmanship under normal use, R&R Reels deliver unmatched durability and cutting precision you can trust.:

2	RE360	200922, E360	Reel - 5 Blade Wing Unit	2
---	--------------	-----------------	--------------------------	---

Detail Description: R&R Reel blades are expertly crafted from premium high carbon-boron alloy steel, heat-treated to perfectly complement both R&R and OEM bedknives. Each reel undergoes precision cylindrical grinding on bearing surfaces, followed by relief grinding for optimal performance. Advanced computer balancing ensures extended reel and bearing life. Backed by our lifetime guarantee against defects in materials and craftsmanship under normal use, R&R Reels deliver unmatched durability and cutting precision you can trust.:

R&R Bedknives, Lifetime Guaranteed

3	RE831	E317, E831	Bedknife - w/Rivets	1
---	--------------	---------------	---------------------	---

Tech Note: Fits Rear Unit:

Detail Description: R&R Bedknives are manufactured from high carbon-boron alloy steel and then hardened to RC46-49 to match the temper of our reel blades and original equipment reels. Bedknives are surface ground on the top and front edge and straightened three times before being packaged with oil for rust prevention. All R&R Bedknives now have an increased front edge grind for added life. All R&R Bedknives are guaranteed against defects in material and workmanship under normal use for the life of the part.:

3	R700406		Bedknife - Use w/ R700405	1
---	----------------	--	---------------------------	---

Tech Note: Fits Rear - Screw on Style:

Detail Description: R&R Bedknives are manufactured from high carbon-boron alloy steel and then hardened to RC46-49 to match the temper of our reel blades and original equipment reels. Bedknives are surface ground on the top and front edge and straightened three times before being packaged with oil for rust prevention. All R&R Bedknives now have an increased front edge grind for added life. All R&R Bedknives are guaranteed against defects in material and workmanship under normal use for the life of the part.:

4	RE358	E358	Bedknife - Wing Unit w/Rivets	2
---	--------------	------	-------------------------------	---

All original equipment manufacturers names and part numbers are used for identification purposes only, and we are in no way implying that our products are original equipment parts. Prices subject to change without notice.



Replaces National 68 Mower Parts

Cutting Unit
Reel & Bedknife



Item No	R&R Part No.	OEM Part No.	Description	Qty Req	Order Quantity
---------	--------------	--------------	-------------	---------	----------------

Detail Description: R&R Bedknives are manufactured from high carbon-boron alloy steel and then hardened to RC46-49 to match the temper of our reel blades and original equipment reels. Bedknives are surface ground on the top and front edge and straightened three times before being packaged with oil for rust prevention. All R&R Bedknives now have an increased front edge grind for added life. All R&R Bedknives are guaranteed against defects in material and workmanship under normal use for the life of the part.:

4	R700407		Bedknife	2	
---	----------------	--	----------	---	--

Detail Description: R&R Bedknives are manufactured from high carbon-boron alloy steel and then hardened to RC46-49 to match the temper of our reel blades and original equipment reels. Bedknives are surface ground on the top and front edge and straightened three times before being packaged with oil for rust prevention. All R&R Bedknives now have an increased front edge grind for added life. All R&R Bedknives are guaranteed against defects in material and workmanship under normal use for the life of the part.:

4	R201504		Bedknife	2	
---	----------------	--	----------	---	--

Detail Description: R&R Bedknives are manufactured from high carbon-boron alloy steel and then hardened to RC46-49 to match the temper of our reel blades and original equipment reels. Bedknives are surface ground on the top and front edge and straightened three times before being packaged with oil for rust prevention. All R&R Bedknives now have an increased front edge grind for added life. All R&R Bedknives are guaranteed against defects in material and workmanship under normal use for the life of the part.:

Service Tools

13	R51-0880		Bedknife Screw Driver Tool	0	
----	-----------------	--	----------------------------	---	--

Detail Description: Easily install and remove bed knife screws with the help of a ratchet with 3/8" drive. Tool manufactured with hardened alloy steel.:

Other Parts Available

5	R101283		Rivet - Bedknife 5/16 x 3/4	0	
---	----------------	--	-----------------------------	---	--

5	R150477		Screw - Bedknife 5/16-18 x 1/2	0	
---	----------------	--	--------------------------------	---	--

Tech Note: Fits R&R Bed Bar:

5	R150478	02109	Screw - Bedknife 5/16-18 x 3/4	9	
---	----------------	-------	--------------------------------	---	--

Tech Note: Fits O.E.M. Bed Bar Only:

Detail Description: Used to Convert Riveted Bed Bar to Bolt on Bedknives:

All original equipment manufacturers names and part numbers are used for identification purposes only, and we are in no way implying that our products are original equipment parts. Prices subject to change without notice.



Replaces National 68 Mower Parts

Cutting Unit
Reel & Bedknife



Item No	R&R Part No.	OEM Part No.	Description	Qty Req	Order Quantity
5	R201802	201802	Nut - Bedknife	9	
<i>Tech Note: Fits O.E.M. Bed Bar Only:</i>					
<i>Detail Description: Used to Convert Riveted Bed Bar to Bolt on Bedknives:</i>					
6	RE840	E323, E840	Bearing - with Cup	2	
7	RE310	A805, E310	Belt - Rear Mower	1	
<i>Detail Description: Fits Wisconsin Engine Torque Team:</i>					
7	RA338	A338	Belt	1	
7	RA339	A339	Belt - Drive	1	
7	RE373B	E373B	Belt - Wing Mower	1	
10	R200231	200231, E316	Bed Bar - For Bedknife - 30	1	
11	R200820	200820, E356	Bed Bar - For 21 Bedknife	1	
12	R200256	200256, E320A, E320B	Screw - w/Nut Reel Brg Adj.	3	

All original equipment manufacturers names and part numbers are used for identification purposes only, and we are in no way implying that our products are original equipment parts. Prices subject to change without notice.