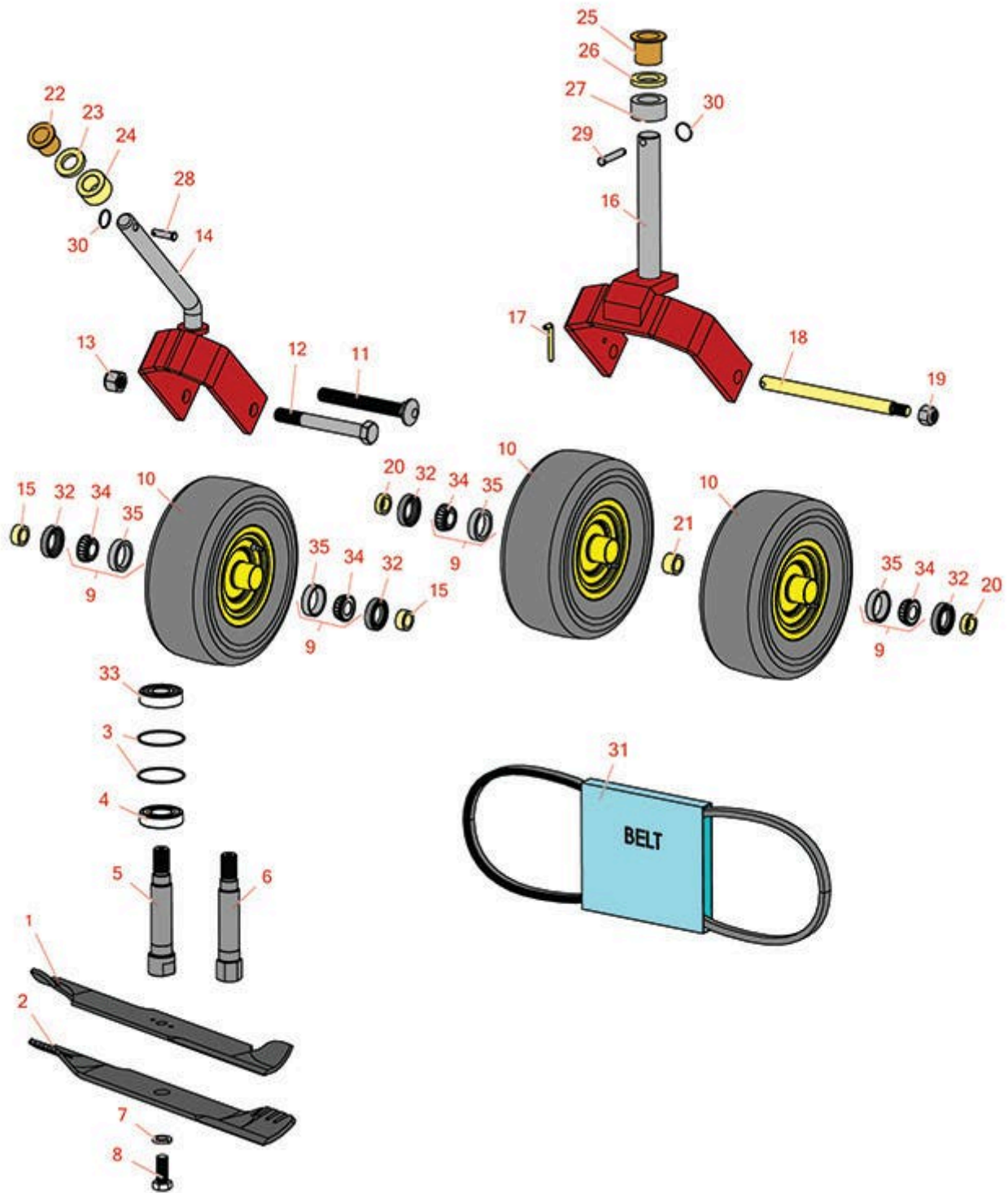




# Replaces Lastec Articulator Parts

Rotary Mower  
Rotary Parts



All original equipment manufacturers names and part numbers are used for identification purposes only, and we are in no way implying that our products are original equipment parts. Prices subject to change without notice.



# Replaces Lastec Articulator Parts

Rotary Mower

Rotary Parts



Item R&R  
No Part No.

OEM  
Part No. Description

Qty  
Req

Order  
Quantity

## Rotary Blades

1	<b>RRB3080-2101</b>	P128	Mower Blade - High-Lift 21 x 2.5in x 5/8 Mt Hole	7
---	---------------------	------	--	---

*Tech Note: 21 in High Lift:*

2	<b>R42180M</b>		Mower Blade - 61 Deck Gator Mulch	7
---	----------------	--	-----------------------------------	---

## Other Parts Available

3	<b>RG-366</b>	P105	O-Ring	14
---	---------------	------	--------	----

4	<b>R358672</b>	P104	Bearing - Ball	7
---	----------------	------	----------------	---

*Tech Note: Bottom:*

5	<b>RT114</b>	T114	Spindle - Power	1
---	--------------	------	-----------------	---

6	<b>RT106</b>	T106	Spindle - Standard	6
---	--------------	------	--------------------	---

7	<b>RF104</b>	F104	Washer - Lock 5/8	7
---	--------------	------	-------------------	---

8	<b>RF103</b>	F103	Bolt - Hex HD 5/8-18 x 1-1/2	7
---	--------------	------	------------------------------	---

9	<b>R500534</b>	P292	Bearing - with Cup	2
---	----------------	------	--------------------	---

10	<b>RA150</b>	A150, P100, P226	Tire w/Wheel Assy 9 x 3.5-4 Smooth	0
----	--------------	------------------------	------------------------------------	---

*Tech Note: Urethane Filled w/3/4" Tapered Bearings:*

11	<b>RF101</b>	F101	Bolt - Carriage 3/4-10 x 6	1
----	--------------	------	----------------------------	---

12	<b>RF164</b>	F164	Bolt - Hex HD 3/4-10 x 6	1
----	--------------	------	--------------------------	---

13	<b>RF102</b>	F102	Locknut - 3/4-10 ESNA L/Nut	1
----	--------------	------	-----------------------------	---

14	<b>RW118A</b>	W118A	Yoke - Wheel Carriage Bolt	2
----	---------------	-------	----------------------------	---

14	<b>RW118</b>	W118	Yoke - Wheel Hex HD Bolt	2
----	--------------	------	--------------------------	---

14	<b>RW120A</b>	W120A	Yoke - Rear Fixed Wheel Cb	1
----	---------------	-------	----------------------------	---

All original equipment manufacturers names and part numbers are used for identification purposes only, and we are in no way implying that our products are original equipment parts. Prices subject to change without notice.



# Replaces Lastec Articulator Parts

Rotary Mower

Rotary Parts



Item No	R&R Part No.	OEM Part No.	Description	Qty Req	Order Quantity
14	<b>RW120</b>	W120	Yoke - Rear Fixed Wheel Hh	1	
14	<b>RW132A</b>	W132A	Yoke - Side Fixed Wheel Cb	1	
14	<b>RW132</b>	W132	Yoke - Side Fixed Wheel Hh	1	
14	<b>RW133A</b>	W133A	Yoke - Side Fixed Wheel Cb	1	
14	<b>RW133</b>	W133	Yoke - Side Fixed Wheel Hh	1	
15	<b>RP296</b>	P296	Spacer - Bearing	2	
16	<b>RW174</b>	W174	Yoke - Dual Wheel 1-1/4 Shft	2	
17	<b>RP180-M</b>	P180-M	Axle - L-Pin Dual Wheel Yoke	2	
18	<b>RT134</b>	T134	Axle - Dual Wheel Yoke Std 9 7/8	1	
18	<b>RT136</b>	T136	Axle - Dual Wheel Yoke Ext 10 1/4	1	
19	<b>RF150</b>	F150	Locknut - 5/8-11 ESNA Full	1	
20	<b>RT125</b>	T125	Spacer - Outer Brg Yoke	2	
21	<b>RT126</b>	T126	Spacer - Inner Brg Yoke	1	
22	<b>RP109</b>	P109	Bushing - Bronze	1	
23	<b>RT104</b>	T104	Spacer - Caster Wheel 1/4	1	
24	<b>RT107</b>	T107	Spacer - Wheel 1	1	
25	<b>RP203</b>	P203	Bushing - Flanged	1	
26	<b>RT132</b>	T132	Spacer - 1/4	1	
27	<b>RT133</b>	T133	Spacer - Dual Wheel 1	1	
28	<b>RP110-M</b>	P110-M	Clevis Pin - 3/8 x 1 5/16	1	
29	<b>RP212-M</b>	P212-M	Clevis Pin - 3/8 x 2 1/8	1	
30	<b>RP111</b>	P111	Ring - 1 Kick Out	1	

All original equipment manufacturers names and part numbers are used for identification purposes only, and we are in no way implying that our products are original equipment parts. Prices subject to change without notice.



# Replaces Lastec Articulator Parts

Rotary Mower

Rotary Parts



Item No	R&R Part No.	OEM Part No.	Description	Qty Req	Order Quantity
31	<b>RP146</b>	P146	Belt - Drive B49	1	
31	<b>RP147</b>	P147	Belt - Deck B56	1	
32	<b>RP293</b>	P293	Seal - Fits RA150 Wheel	2	
33	<b>R35008</b>	P103	Bearing - Spindle	7	
<i>Tech Note: Top:</i>					
34	<b>R254-78</b>		Tapered Bearing Cone	2	
35	<b>R254-79</b>		Cup - Bearing	2	
<i>Tech Note: Use R254-79M installation mandrel to properly install race.:</i>					

All original equipment manufacturers names and part numbers are used for identification purposes only, and we are in no way implying that our products are original equipment parts. Prices subject to change without notice.