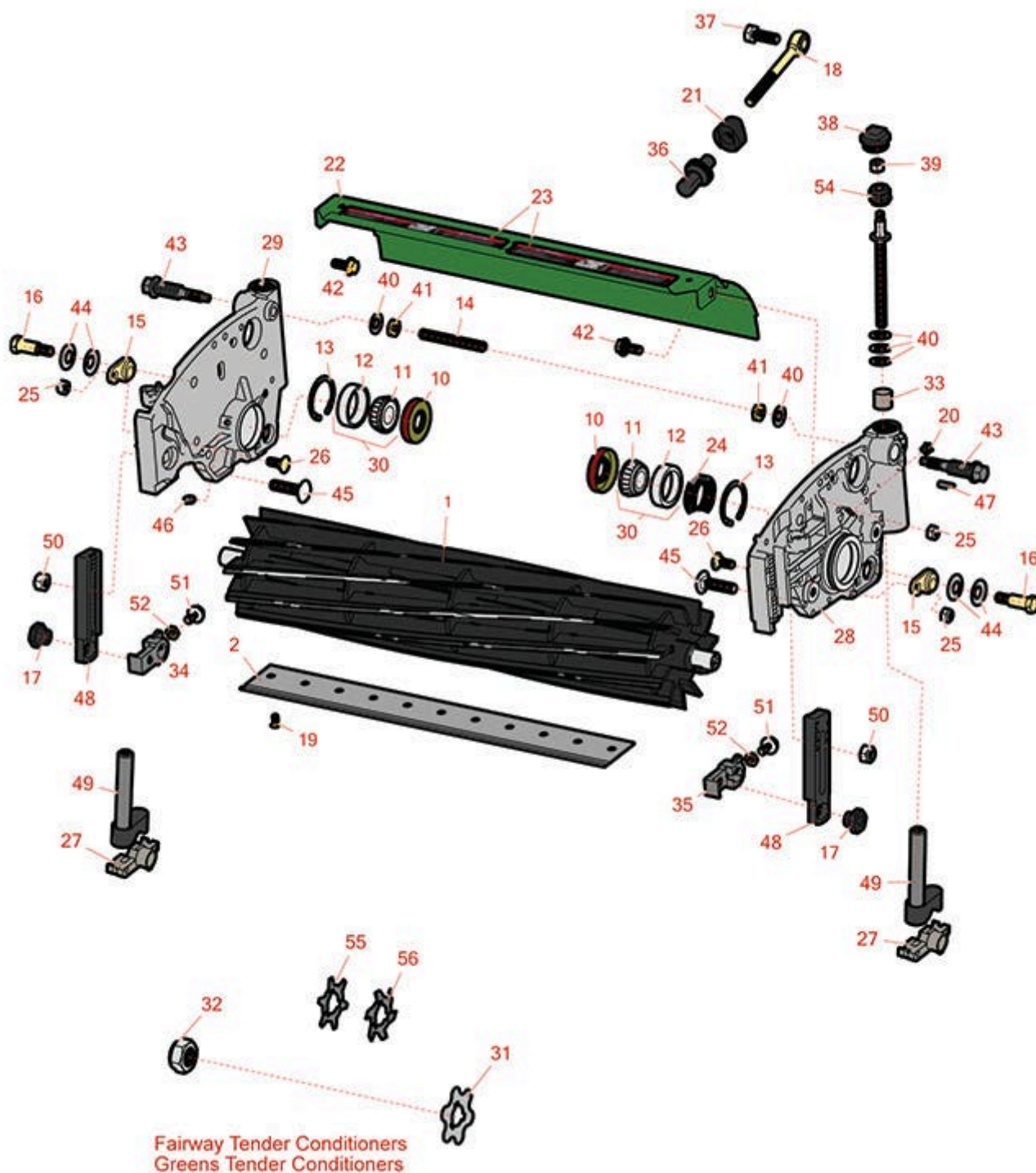




# Replaces John Deere 8000A E-Cut Hybrid Reel Mower Parts

Cutting Unit  
Reel & Bedknife



All original equipment manufacturers names and part numbers are used for identification purposes only, and we are in no way implying that our products are original equipment parts. Prices subject to change without notice.



# Replaces John Deere 8000A E-Cut Hybrid Reel Mower Parts

Cutting Unit  
Reel & Bedknife



Item No	R&R Part No.	OEM Part No.	Description	Qty Req	Order Quantity
---------	--------------	--------------	-------------	---------	----------------

## R&R Reels, Lifetime Guaranteed

1	<b>RTCA19348</b>	TCA19348	Reel - 7 Blade	1
---	------------------	----------	----------------	---

*Detail Description: R&R Reel blades are expertly crafted from premium high carbon-boron alloy steel, heat-treated to perfectly complement both R&R and OEM bedknives. Each reel undergoes precision cylindrical grinding on bearing surfaces, followed by relief grinding for optimal performance. Advanced computer balancing ensures extended reel and bearing life. Backed by our lifetime guarantee against defects in materials and craftsmanship under normal use, R&R Reels deliver unmatched durability and cutting precision you can trust.:*

1	<b>RTCA19349</b>	TCA19349	Reel - 11 Blade	1
---	------------------	----------	-----------------	---

*Detail Description: R&R Reel blades are expertly crafted from premium high carbon-boron alloy steel, heat-treated to perfectly complement both R&R and OEM bedknives. Each reel undergoes precision cylindrical grinding on bearing surfaces, followed by relief grinding for optimal performance. Advanced computer balancing ensures extended reel and bearing life. Backed by our lifetime guarantee against defects in materials and craftsmanship under normal use, R&R Reels deliver unmatched durability and cutting precision you can trust.:*

1	<b>RTCA23622</b>	TCA23622	Reel - 14 Blade	1
---	------------------	----------	-----------------	---

*Detail Description: R&R Reel blades are expertly crafted from premium high carbon-boron alloy steel, heat-treated to perfectly complement both R&R and OEM bedknives. Each reel undergoes precision cylindrical grinding on bearing surfaces, followed by relief grinding for optimal performance. Advanced computer balancing ensures extended reel and bearing life. Backed by our lifetime guarantee against defects in materials and craftsmanship under normal use, R&R Reels deliver unmatched durability and cutting precision you can trust.:*

## Bedknives

2	<b>RMT4846</b>	MT4846, MT4906, UC18877	Bedknife - Tournament	1
---	----------------	-------------------------------	-----------------------	---

*Detail Description: R&R Bedknives are manufactured from high carbon-boron alloy steel and then hardened to RC46-49 to match the temper of our reel blades and original equipment reels. Bedknives are surface ground on the top and front edge and straightened three times before being packaged with oil for rust prevention. All R&R Bedknives now have an increased front edge grind for added life. All R&R Bedknives are guaranteed against defects in material and workmanship under normal use for the life of the part.:*

2	<b>RMT7350</b>	MT6944, MT7350	Bedknife - 22in Low Cut Min HOC .079	0
---	----------------	-------------------	---	---

All original equipment manufacturers names and part numbers are used for identification purposes only, and we are in no way implying that our products are original equipment parts. Prices subject to change without notice.



# Replaces John Deere 8000A E-Cut Hybrid Reel Mower Parts

Cutting Unit  
Reel & Bedknife



Item No	R&R Part No.	OEM Part No.	Description	Qty Req	Order Quantity
---------	--------------	--------------	-------------	---------	----------------

*Detail Description: R&R Bedknives are manufactured from high carbon-boron alloy steel and then hardened to RC46-49 to match the temper of our reel blades and original equipment reels. Bedknives are surface ground on the top and front edge and straightened three times before being packaged with oil for rust prevention. All R&R Bedknives now have an increased front edge grind for added life. All R&R Bedknives are guaranteed against defects in material and workmanship under normal use for the life of the part.:*

2	<b>RMT6944</b>	MT6944, MT7350, UC19156	Bedknife - Low Cut Min HOC .079	0	
---	----------------	-------------------------------	------------------------------------	---	--

*Detail Description: R&R Bedknives are manufactured from high carbon-boron alloy steel and then hardened to RC46-49 to match the temper of our reel blades and original equipment reels. Bedknives are surface ground on the top and front edge and straightened three times before being packaged with oil for rust prevention. All R&R Bedknives now have an increased front edge grind for added life. All R&R Bedknives are guaranteed against defects in material and workmanship under normal use for the life of the part.:*

## Other Parts Available

10	<b>RET14566</b>	ET14566	Seal - Reel	2	
11	<b>R254-78</b>	JD8188	Tapered Bearing Cone	2	
12	<b>R254-79</b>	JD8226	Cup - Bearing	2	
<i>Detail Description: Use R254-79M installation mandrel to properly install race.:</i>					
13	<b>R40M7226</b>	40M1862, 40M7226	Ring - Retaining	2	
14	<b>RTC25398</b>	TCU25398	Compression Spring	1	
15	<b>RTC24334</b>	TCU24334	Retainer	2	
16	<b>RMT3016</b>	MT3016	Bolt - Bed Bar	2	
17	<b>RTC28635</b>	TCU24555, TCU28635	Eccentric	2	
18	<b>RTC25223</b>	TCU25223, TCU30798	Spherical Rod End	2	
19	<b>R101278</b>	21M7194	Screw - Bedknife	11	

All original equipment manufacturers names and part numbers are used for identification purposes only, and we are in no way implying that our products are original equipment parts. Prices subject to change without notice.



# Replaces John Deere 8000A E-Cut Hybrid Reel Mower Parts

Cutting Unit  
Reel & Bedknife



Item No	R&R Part No.	OEM Part No.	Description	Qty Req	Order Quantity
20	<b>R170714</b>	E14814	Fitting - Pressure Relief	2	
21	<b>RTC25394</b>	TCU25394, TCU27453	Base	2	
22	<b>RTCA18643</b>	TCA18643	Shield - (w/Labels)	1	
23	<b>RMT6517</b>	MT6517	Label - Warning	2	
24	<b>RTC23880</b>	TCU23880, TCU28964	Compression Spring - Reel Bearing	1	
25	<b>RH137328</b>	H137328	Locknut	2	
26	<b>R03M7184</b>	03M7184	Bolt - Carriage M8	2	
27	<b>RTC28987</b>	TCU25228, TCU28987	Half Clamp - Roller Bkt	2	
28	<b>RTC35637</b>	TCU24427, TCU35637	Panel - LH	1	
29	<b>RTC35638</b>	TCU24426, TCU35638	Panel - RH	1	
30	<b>R500534</b>		Bearing - with Cup	2	
<i>Detail Description: Kit includes: 1 ea R254-78- Bearing Cone &amp; R254-79 Bearing Cone:</i>					
31	<b>RMT2624</b>	MT2624	Knife - Greens Conditioner	30	
32	<b>RN198341</b>	N198341	Nut - Nyloc 7/8-14	1	
33	<b>RMT74</b>	MT74	Bushing - Roller Bkt	2	
34	<b>RUC16109</b>	TCU24461, UC16109	Bracket - RH	1	
35	<b>RUC18211</b>	TCU24461, UC18211	Bracket - LH	1	
36	<b>RUC16137</b>	TCU24955, UC16137	Adjuster	2	

All original equipment manufacturers names and part numbers are used for identification purposes only, and we are in no way implying that our products are original equipment parts. Prices subject to change without notice.



# Replaces John Deere 8000A E-Cut Hybrid Reel Mower Parts

Cutting Unit  
Reel & Bedknife



Item No	R&R Part No.	OEM Part No.	Description	Qty Req	Order Quantity
37	R19M7168	19M7168	Bolt - M10-1.5 x 30 mm Hex Head Class 8.8	2	
38	RUC16102	TCU24949, UC16102	Cap	2	
39	RM148268	M148268	Lock Nut	2	
40	RET16679	ET16679	Washer - Spring	8	
41	R14M7152	14M7152	Nut - 10mm x 1.5 Jam	2	
42	R19M7866	19M7866	Bolt - Flanged Hex M8-1.25 x 20	2	
43	RTC26458	TCU26458	Worm Gear	2	
44	RN168012	N168012	Washer - Spring	4	
45	R03M7194	03M7194	Bolt	2	
46	R302-5	JD7797, JD7842, JD7844	Fitting - Grease	4	
47	RR30587	30587, R30587	Pin - Dowell 1/4 Dia. x .75	4	
48	RUC16108	TCU24460, UC16108	Bracket	2	
49	RAUC13512	AUC13512, TCA18706	Adjuster	2	
50	R14M7517	14M7517	Locknut - 10mm x 1.5 ESNA	6	
51	R33114-016	19M7162	Bolt - Hx HD 8mm x 1.25 x 15	2	
52	R14M7151	14M7151	Nut - Jam Roller Adj	2	
54	RTC40491	TCU24683, TCU40491	Worm Gear	2	
55	RET14707	ET14707	Verti-Cut Blade - .025 x 2.375	57	

All original equipment manufacturers names and part numbers are used for identification purposes only, and we are in no way implying that our products are original equipment parts. Prices subject to change without notice.



# Replaces John Deere 8000A E-Cut Hybrid Reel Mower Parts

*Cutting Unit  
Reel & Bedknife*



Item No	R&R Part No.	OEM Part No.	Description	Qty Req	Order Quantity
56	RET14707C		Verti-Cut Blade - .025 x 2.375 Carbide Tipped	57	

All original equipment manufacturers names and part numbers are used for identification purposes only, and we are in no way implying that our products are original equipment parts. Prices subject to change without notice.