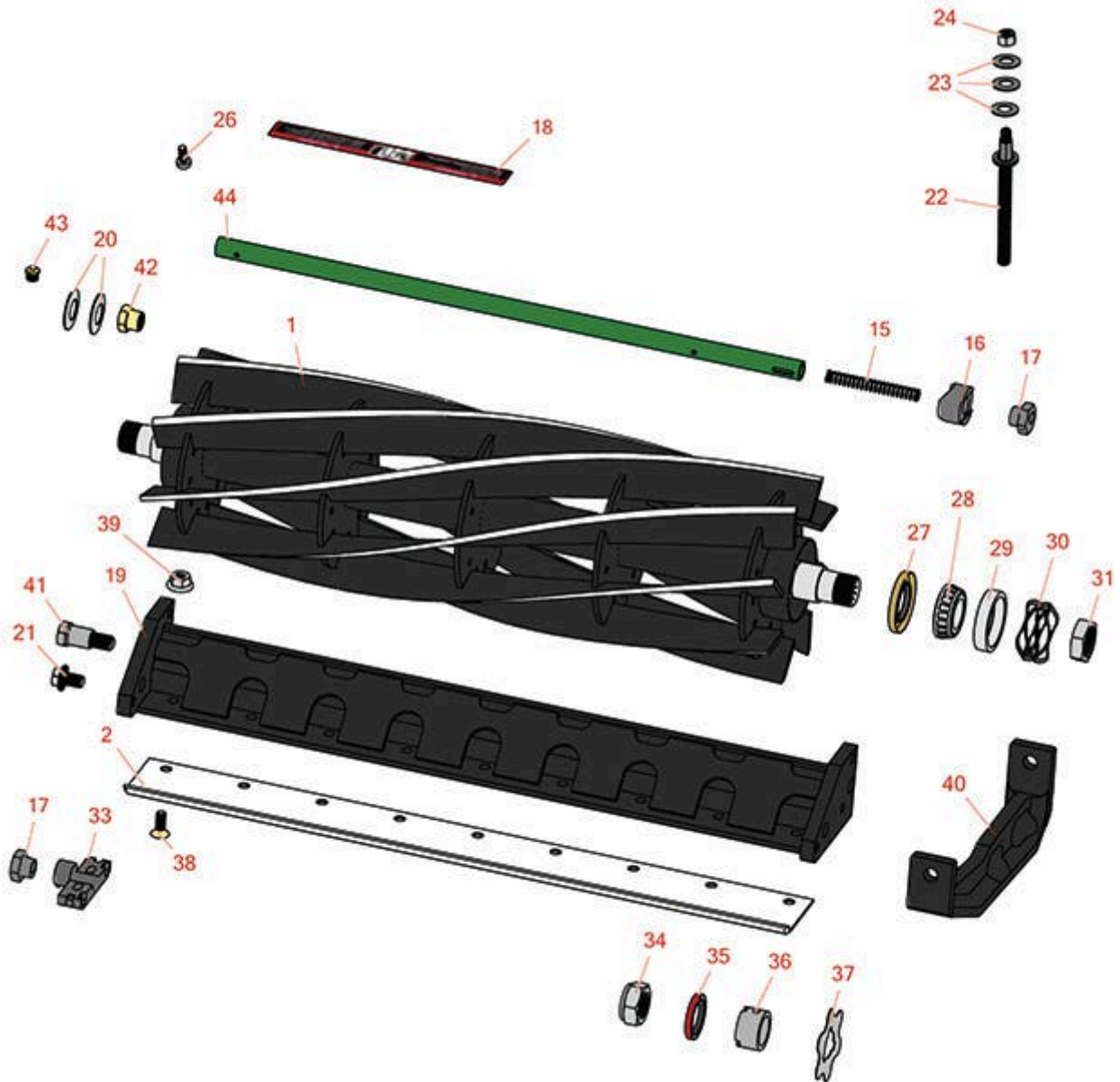




# Replaces John Deere 7700A Reel Mower

## Parts

Cutting Unit  
Reel & Bedknife



All original equipment manufacturers names and part numbers are used for identification purposes only, and we are in no way implying that our products are original equipment parts. Prices subject to change without notice.



# Replaces John Deere 7700A Reel Mower

## Parts

Cutting Unit  
Reel & Bedknife



Item No	R&R Part No.	OEM Part No.	Description	Qty Req	Order Quantity
---------	--------------	--------------	-------------	---------	----------------

### R&R Reels, Lifetime Guaranteed

1	<b>RTCA19354</b>	TCA19354	Reel - 10 Blade - Internal Splines	1	
1	<b>RTCA19353</b>	TCA19353	Reel - 8 Blade - Internal Splines	1	
1	<b>RAMT2895</b>	AMT2895	Reel - 5 Blade	1	

### R&R Bedknives, Lifetime Guaranteed

2	<b>RET17751</b>	ET17751	Bedknife - Standard 12mm	1	
2	<b>RMT1928</b>	MT1928	Bedknife - 9.5mm (3/8)	1	
2	<b>RMT3983</b>	MT3983	Bedknife - 6.3 mm (1/4)	1	
2	<b>RTCUC32581</b>	TCUC32581	Bed Knife - Razor 1/4 in HOC - Extended	1	

### R&R Razor Tool Steel Bedknives, Lifetime Guaranteed

2	<b>R130135</b>		Bedknife - Razor Tool Steel - 22 High Cut	1	
---	----------------	--	---	---	--

### Other Parts Available

15	<b>RTCUC25398</b>	TCUC25398	Compression Spring	1	
16	<b>RTCUC25394</b>	TCUC25394, TCUC27453	Base	2	
17	<b>RTCUC28635</b>	TCUC24555, TCUC28635	Eccentric	2	
18	<b>RMT6517</b>	MT6517	Label - Warning	1	
19	<b>RAMT2973</b>	AMT2973	Backing Bar - Bed Knife	1	
20	<b>RET16678</b>	ET16678	Washer - Spring	4	
21	<b>R19M7783</b>	19M7783	Screw - Bed Bar Mount	6	
22	<b>RTCUC26123</b>	TCUC26123	Adjuster	2	
23	<b>RET16679</b>	ET16679	Washer - Spring	6	

All original equipment manufacturers names and part numbers are used for identification purposes only, and we are in no way implying that our products are original equipment parts. Prices subject to change without notice.



# Replaces John Deere 7700A Reel Mower

## Parts

Cutting Unit  
Reel & Bedknife



Item No	R&R Part No.	OEM Part No.	Description	Qty Req	Order Quantity
24	<b>RM148268</b>	M148268	Lock Nut	2	
26	<b>R21M7246</b>	21M7246	Screw	0	
27	<b>RTC25266</b>	TCU25266	Seal	2	
28	<b>R254-94</b>	JD8933, TCU37582	Tapered Bearing Cone	2	
29	<b>R254-72</b>	JD8253	Cup - Bearing	2	
30	<b>R170610</b>	TCU26530	Spring - Compression	1	
31	<b>RTC26215</b>	TCU26215	Nut - Reel	2	
33	<b>RTC28987</b>	TCU28987	Half Clamp - Roller Bkt	2	
34	<b>RN198341</b>	N198341	Nut - Nyloc 7/8-14	2	
35	<b>RMT1115</b>	MT1115	Seal - Reel	2	
36	<b>RET14917</b>	ET14917	Spacer	75	
37	<b>RMT2624</b>	MT2624	Knife - Greens Conditioner	38	
38	<b>R19M7573</b>	19M7573	Screw - Bedknife M8-1.25 x 20	9	
39	<b>R14M7396</b>	14M7396	Locknut - Flanged Nyloc	9	
39	<b>RH135891</b>	H135891	Locknut - 10mm x 1.5 Flanged 10.9	9	
<i>Tech Note: High Strength:</i>					
40	<b>RMT2527</b>	MT2527	Shoe - Skid	2	
41	<b>RMT6338</b>	MT6338	Bolt - Shoulder	2	
42	<b>RET16572</b>	ET16572	Nut - Hex	2	
43	<b>R170714</b>	E14814	Fitting - Pressure Relief	2	
44	<b>RTC26729</b>	TCU26729	Tube	1	

All original equipment manufacturers names and part numbers are used for identification purposes only, and we are in no way implying that our products are original equipment parts. Prices subject to change without notice.