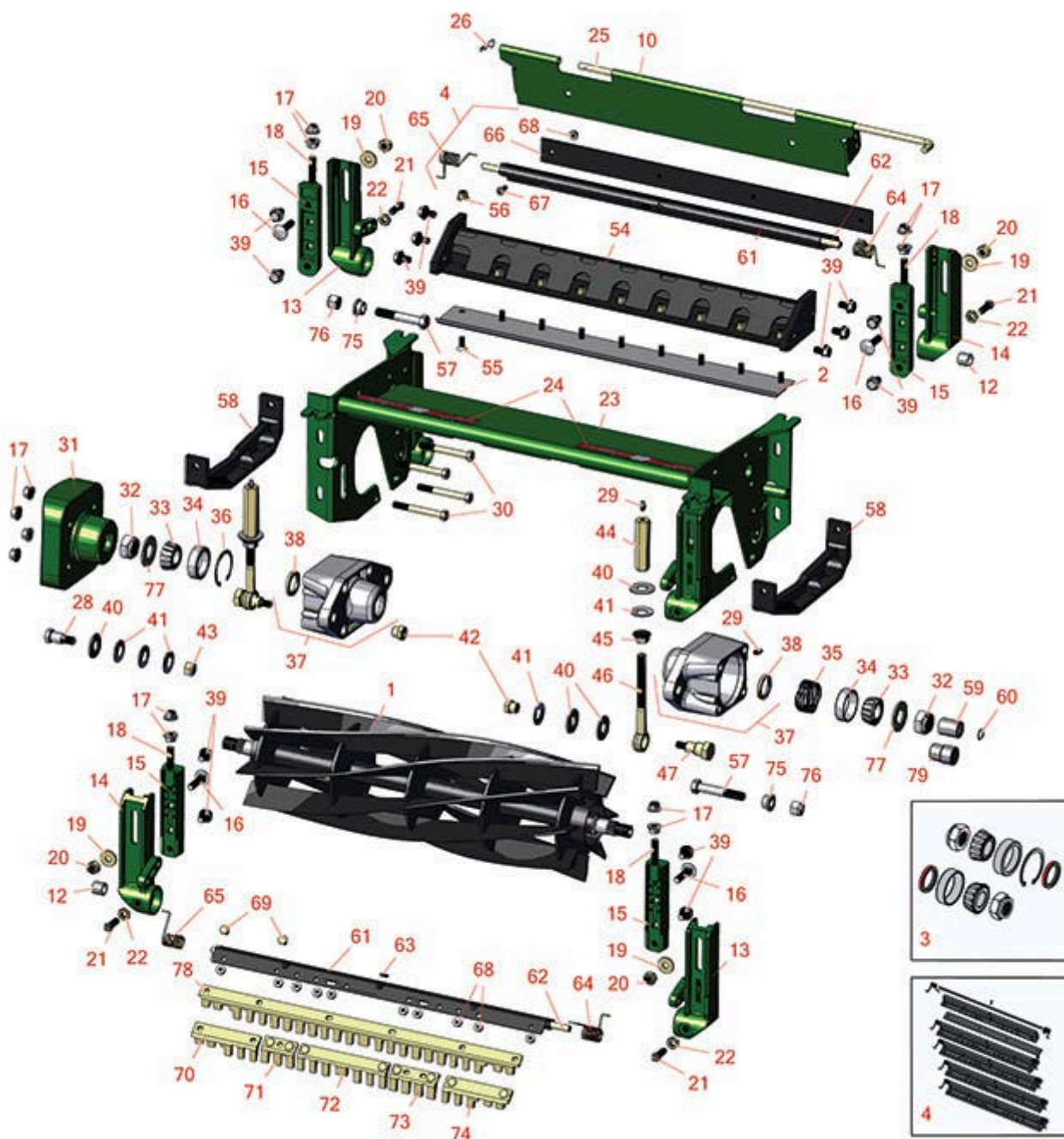




Replaces John Deere 3215B Reel Mower

Parts

Heavy Cutting Unit
Reel & Bedknife



All original equipment manufacturers names and part numbers are used for identification purposes only, and we are in no way implying that our products are original equipment parts. Prices subject to change without notice.



Replaces John Deere 3215B Reel Mower Parts

Heavy Cutting Unit
Reel & Bedknife



| Item No | R&R Part No. | OEM Part No. | Description | Qty Req | Order Quantity |
|---------|--------------|--------------|-------------|---------|----------------|
|---------|--------------|--------------|-------------|---------|----------------|

R&R Reels, Lifetime Guaranteed

| | | | | |
|---|------------------|---------|----------------|---|
| 1 | RAET11159 | AMT2893 | Reel - 8 Blade | 1 |
|---|------------------|---------|----------------|---|

Detail Description: R&R Reel blades are expertly crafted from premium high carbon-boron alloy steel, heat-treated to perfectly complement both R&R and OEM bedknives. Each reel undergoes precision cylindrical grinding on bearing surfaces, followed by relief grinding for optimal performance. Advanced computer balancing ensures extended reel and bearing life. Backed by our lifetime guarantee against defects in materials and craftsmanship under normal use, R&R Reels deliver unmatched durability and cutting precision you can trust.:

| | | | | |
|---|-----------------|---------|----------------|---|
| 1 | RAMT2895 | AMT2895 | Reel - 5 Blade | 1 |
|---|-----------------|---------|----------------|---|

Detail Description: R&R Reel blades are expertly crafted from premium high carbon-boron alloy steel, heat-treated to perfectly complement both R&R and OEM bedknives. Each reel undergoes precision cylindrical grinding on bearing surfaces, followed by relief grinding for optimal performance. Advanced computer balancing ensures extended reel and bearing life. Backed by our lifetime guarantee against defects in materials and craftsmanship under normal use, R&R Reels deliver unmatched durability and cutting precision you can trust.:

| | | | | |
|---|-----------------|---------|-----------------|---|
| 1 | RAMT2894 | AMT2894 | Reel - 10 Blade | 1 |
|---|-----------------|---------|-----------------|---|

Detail Description: R&R Reel blades are expertly crafted from premium high carbon-boron alloy steel, heat-treated to perfectly complement both R&R and OEM bedknives. Each reel undergoes precision cylindrical grinding on bearing surfaces, followed by relief grinding for optimal performance. Advanced computer balancing ensures extended reel and bearing life. Backed by our lifetime guarantee against defects in materials and craftsmanship under normal use, R&R Reels deliver unmatched durability and cutting precision you can trust.:

R&R Bedknives, Lifetime Guaranteed

| | | | | |
|---|-----------------|---------|--------------------------|---|
| 2 | RET17751 | ET17751 | Bedknife - Standard 12mm | 1 |
|---|-----------------|---------|--------------------------|---|

Detail Description: R&R Bedknives are manufactured from high carbon-boron alloy steel and then hardened to RC46-49 to match the temper of our reel blades and original equipment reels. Bedknives are surface ground on the top and front edge and straightened three times before being packaged with oil for rust prevention. All R&R Bedknives now have an increased front edge grind for added life. All R&R Bedknives are guaranteed against defects in material and workmanship under normal use for the life of the part.:

| | | | | |
|---|----------------|--------|------------------------|---|
| 2 | RMT1928 | MT1928 | Bedknife - 9.5mm (3/8) | 1 |
|---|----------------|--------|------------------------|---|

All original equipment manufacturers names and part numbers are used for identification purposes only, and we are in no way implying that our products are original equipment parts. Prices subject to change without notice.



Replaces John Deere 3215B Reel Mower Parts

Heavy Cutting Unit
Reel & Bedknife



| Item No | R&R Part No. | OEM Part No. | Description | Qty Req | Order Quantity |
|---------|--------------|--------------|-------------|---------|----------------|
|---------|--------------|--------------|-------------|---------|----------------|

Detail Description: R&R Bedknives are manufactured from high carbon-boron alloy steel and then hardened to RC46-49 to match the temper of our reel blades and original equipment reels. Bedknives are surface ground on the top and front edge and straightened three times before being packaged with oil for rust prevention. All R&R Bedknives now have an increased front edge grind for added life. All R&R Bedknives are guaranteed against defects in material and workmanship under normal use for the life of the part.:

| | | | | |
|---|----------------|--------|-------------------------|---|
| 2 | RMT3983 | MT3983 | Bedknife - 6.3 mm (1/4) | 1 |
|---|----------------|--------|-------------------------|---|

Detail Description: R&R Bedknives are manufactured from high carbon-boron alloy steel and then hardened to RC46-49 to match the temper of our reel blades and original equipment reels. Bedknives are surface ground on the top and front edge and straightened three times before being packaged with oil for rust prevention. All R&R Bedknives now have an increased front edge grind for added life. All R&R Bedknives are guaranteed against defects in material and workmanship under normal use for the life of the part.:

R&R Razor Tool Steel Bedknives, Lifetime Guaranteed

| | | | | |
|---|----------------|--|---|---|
| 2 | R130135 | | Bedknife - Razor Tool Steel - 22 High Cut | 1 |
|---|----------------|--|---|---|

Detail Description: R&R Razor bedknives are manufactured from premium alloy tool steel steel and then hardened to RC48-51 to match the temper of our Razor reel blades and original equipment premium series reels. Bedknives are surface ground on the top and front edge and specially packaged for rust prevention. All R&R Bedknives now have an increased front edge grind for added life. All R&R Bedknives are guaranteed against defects in material and workmanship under normal use for the life of the part. You can expect up to double the life over standard bedknives.:

Overhaul Kits

| | | | | |
|---|----------------|--|-----------------------------|---|
| 3 | R100174 | | Overhaul Kit - Cutting Unit | 0 |
|---|----------------|--|-----------------------------|---|

Detail Description: Includes 2 ea.: R254-90 Bearing Cups, RJD8960 Bearing Cones, RMT1115 Seals, RMT1211 Locknuts; 1 ea.: R32120-65 Retaining Ring:

| | | | | |
|---|-----------------|---------|----------------------------------|---|
| 4 | RBM17684 | BM17684 | Scraper Kit - Solid Roller SET/5 | 0 |
|---|-----------------|---------|----------------------------------|---|

Detail Description: Includes 20 ea: R03M7221 Bolt, R14M7303 Nut; 5 ea: R34M7010 Pin, R500571 Scraper Bar, RET17629 LH Spring, RET17630 RH Spring, RET17757 Pin, RMT2595 Scraper Blade:

Other Parts Available

| | | | | |
|----|-----------------|---------|---------------|---|
| 10 | RET17753 | ET17753 | Shield - Rear | 1 |
|----|-----------------|---------|---------------|---|

All original equipment manufacturers names and part numbers are used for identification purposes only, and we are in no way implying that our products are original equipment parts. Prices subject to change without notice.



Replaces John Deere 3215B Reel Mower Parts

Heavy Cutting Unit
Reel & Bedknife



| Item No | R&R Part No. | OEM Part No. | Description | Qty Req | Order Quantity |
|---------|--------------|------------------------------|-------------------------------|---------|----------------|
| 12 | RMT74 | MT74 | Bushing - Roller Bkt | 4 | |
| 13 | RMT6595 | MT6595 | Adjuster - L. Front / R. Rear | 2 | |
| 13 | RET17633 | ET17633 | Adjuster - L. Front / R. Rear | 2 | |
| 14 | RAMT100 | AMT100, ET17632 | Adjuster - R. Front / L. Rear | 2 | |
| 15 | RAET11311 | AET11311 | Clamp - Roller Bkt | 4 | |
| 16 | R03M7194 | 03M7194 | Bolt | 4 | |
| 17 | R14M7296 | 14M7296 | Nut - 10mm x 1.5 Flanged | 8 | |
| 18 | RET17646 | ET17646 | Stud - Clamp | 4 | |
| 19 | R24H1308 | 24H1308 | Washer | 4 | |
| 20 | R14M7400 | 14M7400 | Locknut - 10mm | 4 | |
| 21 | RH138435 | H138435 | Screw - Set | 2 | |
| 22 | R14M7152 | 14M7152 | Nut - 10mm x 1.5 Jam | 2 | |
| 23 | RAET11305 | AET11305 | Frame | 1 | |
| 24 | RMT6517 | MT6517 | Label - Warning | 2 | |
| 25 | RET17759 | ET17759 | Pin | 1 | |
| 26 | RR50647 | J16931, R50647 | Pin - Hair Cotter | 2 | |
| 28 | RMT6338 | MT6338 | Bolt - Shoulder | 2 | |
| 29 | R302-5 | JD7797, JD7842, JD7844 | Fitting - Grease | 4 | |
| 30 | R19M8197 | 19M8197 | Bolt - Hx HD | 8 | |
| 31 | RMT761 | MT761 | Weight | 1 | |

All original equipment manufacturers names and part numbers are used for identification purposes only, and we are in no way implying that our products are original equipment parts. Prices subject to change without notice.



Replaces John Deere 3215B Reel Mower Parts

*Heavy Cutting Unit
Reel & Bedknife*



| Item No | R&R Part No. | OEM Part No. | Description | Qty Req | Order Quantity |
|---------|--------------|----------------------|-----------------------------------|---------|----------------|
| 32 | RMT1211 | MT1211 | Locknut - 7/8-14 All Metal | 2 | |
| 33 | RJD8960 | JD8960 | Tapered Bearing Cone | 2 | |
| 34 | R254-90 | JD8239 | Tapered Bearing Cup | 2 | |
| 35 | RET17510 | ET17510 | Spring | 1 | |
| 36 | R32120-65 | N51168 | Ring - Retaining | 1 | |
| 37 | RAMT683 | AMT683 | Housing - Bearing w/Zerk and Seal | 2 | |
| 38 | RMT1115 | MT1115 | Seal - Reel | 2 | |
| 39 | R19M7783 | 19M7783 | Screw - Bed Bar Mount | 14 | |
| 40 | RET16424 | ET16424 | Washer | 6 | |
| 41 | RET16678 | ET16678 | Washer - Spring | 10 | |
| 42 | RET16572 | ET16572 | Nut - Hex | 2 | |
| 43 | RA31867 | A31867 | Locknut | 2 | |
| 44 | RAET10880 | AET10880, AMT2965 | Adjuster - Reel | 2 | |
| 45 | RET17361 | ET17361 | Nut - Flanged Eyebolt | 2 | |
| 46 | RET16897 | ET16897 | Eyebolt | 2 | |
| 47 | RET16896 | ET16896 | Bolt - Shoulder | 2 | |
| 54 | RAMT2973 | AMT2973 | Backing Bar - Bed Knife | 1 | |
| 55 | R19M7573 | 19M7573 | Screw - Bedknife M8-1.25 x 20 | 9 | |
| 56 | R14M7396 | 14M7396 | Locknut - Flanged Nyloc | 9 | |
| 57 | R19H1820 | 19H1820 | Cap Screw - 1/2-13 x 3 | 2 | |
| 58 | RMT2527 | MT2527 | Shoe - Skid | 2 | |

All original equipment manufacturers names and part numbers are used for identification purposes only, and we are in no way implying that our products are original equipment parts. Prices subject to change without notice.



Replaces John Deere 3215B Reel Mower Parts

Heavy Cutting Unit
Reel & Bedknife



| Item No | R&R Part No. | OEM Part No. | Description | Qty Req | Order Quantity |
|---------|--------------|---------------------|-------------------------------------|---------|----------------|
| 59 | RTCA12581 | TCA12581 | Coupling - Reel 11 Tooth | 1 | |
| 60 | RMT2745 | MT2745 | Snap Ring | 1 | |
| 61 | R500571 | MT2369 | Bar - Scraper | 2 | |
| 62 | RET17757 | ET11757, ET17757 | Pin - Scraper | 2 | |
| 63 | R34M7010 | 34M7010 | Pin - Spring | 2 | |
| 64 | RET17629 | ET17629 | Spring - Torsion LH | 2 | |
| 65 | RET17630 | ET17630 | Spring - Torsion RH | 2 | |
| 66 | RMT2595 | MT2595, MT2895 | Scraper Blade - Solid Roller | 1 | |
| 67 | R21M7246 | 21M7246 | Screw | 4 | |
| 68 | R14M7303 | 14M7303 | Nut - 6mm x 1.0 Flanged | 10 | |
| 69 | R03M7251 | 03M7251 | Bolt - Gr. Roller Scraper | 10 | |
| 70 | RMT5158 | MT5158 | Scraper - Fits J.D. RH End | 1 | |
| 71 | RMT2342 | MT2342 | Section - Grooved Scraper 3 Tooth | 1 | |
| 72 | RMT2340 | MT2340 | Scraper - Fits J.D. Center | 1 | |
| 73 | RMT2341 | MT2341 | Section - Grooved Scraper 4 Tooth | 1 | |
| 74 | RMT5159 | MT5159 | Scraper - Fits J.D. LH End | 1 | |
| 75 | RM71076 | M71076 | Bushing | 2 | |
| 76 | RK40014 | K40014 | Locknut - 1/2-13 All Metal Top Lock | 2 | |
| 77 | RM81551 | M81551 | Washer - 1.840 OD | 2 | |

All original equipment manufacturers names and part numbers are used for identification purposes only, and we are in no way implying that our products are original equipment parts. Prices subject to change without notice.



Replaces John Deere 3215B Reel Mower Parts

Heavy Cutting Unit
Reel & Bedknife



| Item No | R&R Part No. | OEM Part No. | Description | Qty Req | Order Quantity |
|--|--------------|--------------|-------------------------------|---------|----------------|
| 78 | R500558 | | Scraper - Grooved Roller | 2 | |
| <i>Detail Description: 1 Piece Scraper fits OEM AET11262 & AMT2966 Grooved Roller:</i> | | | | | |
| 79 | RMT7067 | MT7067 | Coupling - Splined 9/11 Tooth | 1 | |

All original equipment manufacturers names and part numbers are used for identification purposes only, and we are in no way implying that our products are original equipment parts. Prices subject to change without notice.