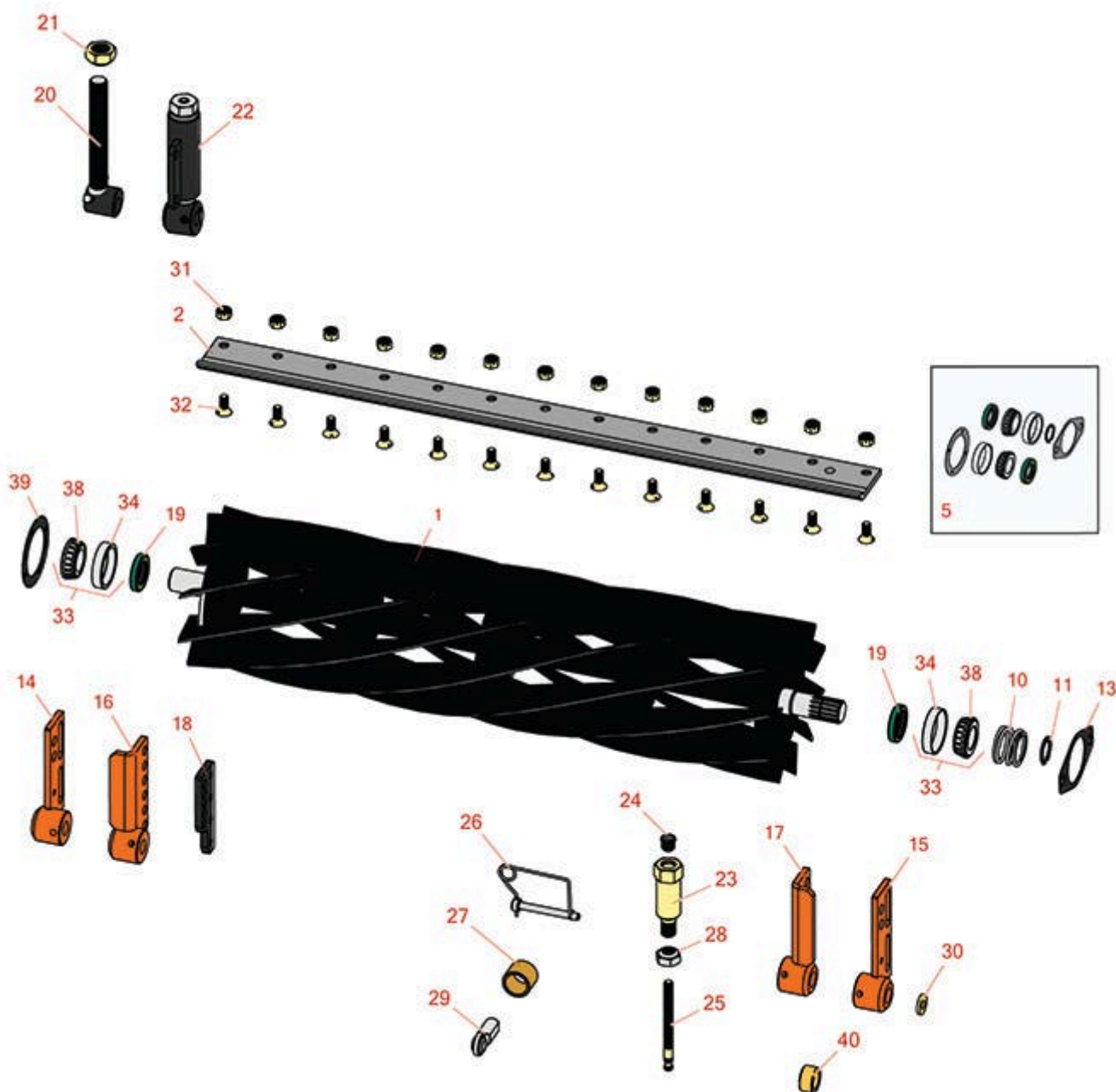




Replaces Jacobsen Tri-King 1900D Parts

Cutting Unit
Reel & Bedknife



All original equipment manufacturers names and part numbers are used for identification purposes only, and we are in no way implying that our products are original equipment parts. Prices subject to change without notice.



Replaces Jacobsen Tri-King 1900D Parts

Cutting Unit
Reel & Bedknife



Item No	R&R Part No.	OEM Part No.	Description	Qty Req	Order Quantity
---------	--------------	--------------	-------------	---------	----------------

R&R 26" Reels, Lifetime Guaranteed

1	R503274	122547, 503274	Reel - 5 Blade LH 26 in	1
---	----------------	-------------------	-------------------------	---

Detail Description: R&R Reel blades are expertly crafted from premium high carbon-boron alloy steel, heat-treated to perfectly complement both R&R and OEM bedknives. Each reel undergoes precision cylindrical grinding on bearing surfaces, followed by relief grinding for optimal performance. Advanced computer balancing ensures extended reel and bearing life. Backed by our lifetime guarantee against defects in materials and craftsmanship under normal use, R&R Reels deliver unmatched durability and cutting precision you can trust.:

1	R503275	122546, 503275	Reel - 5 Blade RH 26 in	1
---	----------------	-------------------	-------------------------	---

Detail Description: R&R Reel blades are expertly crafted from premium high carbon-boron alloy steel, heat-treated to perfectly complement both R&R and OEM bedknives. Each reel undergoes precision cylindrical grinding on bearing surfaces, followed by relief grinding for optimal performance. Advanced computer balancing ensures extended reel and bearing life. Backed by our lifetime guarantee against defects in materials and craftsmanship under normal use, R&R Reels deliver unmatched durability and cutting precision you can trust.:

1	R5002088	5002088	Reel - 7 Blade RH 26 in	1
---	-----------------	---------	-------------------------	---

Detail Description: R&R Reel blades are expertly crafted from premium high carbon-boron alloy steel, heat-treated to perfectly complement both R&R and OEM bedknives. Each reel undergoes precision cylindrical grinding on bearing surfaces, followed by relief grinding for optimal performance. Advanced computer balancing ensures extended reel and bearing life. Backed by our lifetime guarantee against defects in materials and craftsmanship under normal use, R&R Reels deliver unmatched durability and cutting precision you can trust.:

1	R5002087	5002087	Reel - 7 Blade LH - 26 in	1
---	-----------------	---------	---------------------------	---

Detail Description: R&R Reel blades are expertly crafted from premium high carbon-boron alloy steel, heat-treated to perfectly complement both R&R and OEM bedknives. Each reel undergoes precision cylindrical grinding on bearing surfaces, followed by relief grinding for optimal performance. Advanced computer balancing ensures extended reel and bearing life. Backed by our lifetime guarantee against defects in materials and craftsmanship under normal use, R&R Reels deliver unmatched durability and cutting precision you can trust.:

1	R503276	122549, 503276	Reel - 10 Blade LH/Center - 26 in	1
---	----------------	-------------------	-----------------------------------	---

All original equipment manufacturers names and part numbers are used for identification purposes only, and we are in no way implying that our products are original equipment parts. Prices subject to change without notice.



Replaces Jacobsen Tri-King 1900D Parts

Cutting Unit
Reel & Bedknife



Item No	R&R Part No.	OEM Part No.	Description	Qty Req	Order Quantity
---------	--------------	--------------	-------------	---------	----------------

Detail Description: R&R Reel blades are expertly crafted from premium high carbon-boron alloy steel, heat-treated to perfectly complement both R&R and OEM bedknives. Each reel undergoes precision cylindrical grinding on bearing surfaces, followed by relief grinding for optimal performance. Advanced computer balancing ensures extended reel and bearing life. Backed by our lifetime guarantee against defects in materials and craftsmanship under normal use, R&R Reels deliver unmatched durability and cutting precision you can trust.:

1	R503277	122548, 503277	Reel - 10 Blade RH - 26 in	1	
---	----------------	-------------------	----------------------------	---	--

Detail Description: R&R Reel blades are expertly crafted from premium high carbon-boron alloy steel, heat-treated to perfectly complement both R&R and OEM bedknives. Each reel undergoes precision cylindrical grinding on bearing surfaces, followed by relief grinding for optimal performance. Advanced computer balancing ensures extended reel and bearing life. Backed by our lifetime guarantee against defects in materials and craftsmanship under normal use, R&R Reels deliver unmatched durability and cutting precision you can trust.:

R&R 30" Reels, Lifetime Guaranteed

1	R503359	503359	Reel - 5 Blade LH/Center - 30 in	1	
---	----------------	--------	----------------------------------	---	--

Detail Description: R&R Reel blades are expertly crafted from premium high carbon-boron alloy steel, heat-treated to perfectly complement both R&R and OEM bedknives. Each reel undergoes precision cylindrical grinding on bearing surfaces, followed by relief grinding for optimal performance. Advanced computer balancing ensures extended reel and bearing life. Backed by our lifetime guarantee against defects in materials and craftsmanship under normal use, R&R Reels deliver unmatched durability and cutting precision you can trust.:

1	R503360	503360	Reel - 5 Blade RH 30 in	1	
---	----------------	--------	-------------------------	---	--

Detail Description: R&R Reel blades are expertly crafted from premium high carbon-boron alloy steel, heat-treated to perfectly complement both R&R and OEM bedknives. Each reel undergoes precision cylindrical grinding on bearing surfaces, followed by relief grinding for optimal performance. Advanced computer balancing ensures extended reel and bearing life. Backed by our lifetime guarantee against defects in materials and craftsmanship under normal use, R&R Reels deliver unmatched durability and cutting precision you can trust.:

1	R5002090	5002090	Reel - 7 Blade RH 30 in	1	
---	-----------------	---------	-------------------------	---	--

Detail Description: R&R Reel blades are expertly crafted from premium high carbon-boron alloy steel, heat-treated to perfectly complement both R&R and OEM bedknives. Each reel undergoes precision cylindrical grinding on bearing surfaces, followed by relief grinding for optimal performance. Advanced computer balancing ensures extended reel and bearing life. Backed by our lifetime guarantee against defects in materials and craftsmanship under normal use, R&R Reels deliver unmatched durability and cutting precision you can trust.:

All original equipment manufacturers names and part numbers are used for identification purposes only, and we are in no way implying that our products are original equipment parts. Prices subject to change without notice.



Replaces Jacobsen Tri-King 1900D Parts

Cutting Unit
Reel & Bedknife



Item No	R&R Part No.	OEM Part No.	Description	Qty Req	Order Quantity
---------	--------------	--------------	-------------	---------	----------------

1	R5002089	5002089	Reel - 7 Blade LH - 30 in	1	
---	-----------------	---------	---------------------------	---	--

Detail Description: R&R Reel blades are expertly crafted from premium high carbon-boron alloy steel, heat-treated to perfectly complement both R&R and OEM bedknives. Each reel undergoes precision cylindrical grinding on bearing surfaces, followed by relief grinding for optimal performance. Advanced computer balancing ensures extended reel and bearing life. Backed by our lifetime guarantee against defects in materials and craftsmanship under normal use, R&R Reels deliver unmatched durability and cutting precision you can trust.:

1	R503361	503361	Reel - 10 Blade LH/Center - 30 in	1	
---	----------------	--------	-----------------------------------	---	--

Detail Description: R&R Reel blades are expertly crafted from premium high carbon-boron alloy steel, heat-treated to perfectly complement both R&R and OEM bedknives. Each reel undergoes precision cylindrical grinding on bearing surfaces, followed by relief grinding for optimal performance. Advanced computer balancing ensures extended reel and bearing life. Backed by our lifetime guarantee against defects in materials and craftsmanship under normal use, R&R Reels deliver unmatched durability and cutting precision you can trust.:

1	R503362	503362	Reel - 10 Blade RH - 30 in	1	
---	----------------	--------	----------------------------	---	--

Detail Description: R&R Reel blades are expertly crafted from premium high carbon-boron alloy steel, heat-treated to perfectly complement both R&R and OEM bedknives. Each reel undergoes precision cylindrical grinding on bearing surfaces, followed by relief grinding for optimal performance. Advanced computer balancing ensures extended reel and bearing life. Backed by our lifetime guarantee against defects in materials and craftsmanship under normal use, R&R Reels deliver unmatched durability and cutting precision you can trust.:

R&R Bedknives, Lifetime Guaranteed

2	R503550	331692, 503363, 503550	Bedknife - 30 in (13 Hole)	1	
---	----------------	------------------------------	----------------------------	---	--

Detail Description: R&R Bedknives are manufactured from high carbon-boron alloy steel and then hardened to RC46-49 to match the temper of our reel blades and original equipment reels. Bedknives are surface ground on the top and front edge and straightened three times before being packaged with oil for rust prevention. All R&R Bedknives now have an increased front edge grind for added life. All R&R Bedknives are guaranteed against defects in material and workmanship under normal use for the life of the part.:

2	R3000249	3000249, 336419, 554284	Bedknife - 7/16 - 26 Inch	1	
---	-----------------	-------------------------------	---------------------------	---	--

Overhaul Kits & Service Tools

All original equipment manufacturers names and part numbers are used for identification purposes only, and we are in no way implying that our products are original equipment parts. Prices subject to change without notice.



Replaces Jacobsen Tri-King 1900D Parts

Cutting Unit
Reel & Bedknife



Item No	R&R Part No.	OEM Part No.	Description	Qty Req	Order Quantity
5	R100132		Overhaul Kit - Cutting Unit	1	
<i>Detail Description: Includes 2 ea.: R254-72 Bearing Cups, R254-94 Bearing Cones & R337593 Seals; 1 ea.: R364777 Gasket, R364147 Gasket & R458039 Retaining Ring:</i>					
Other Parts Available					
10	R364148	364148	Spring - Reel Brg Tension	1	
11	R458039	458039	Ring - Retaining	1	
13	R364777	364777	Gasket - Motor End	1	
14	R132312	132312	Bracket - Roller RH	1	
15	R132313	132313	Bracket - Roller LH	1	
16	R132028	132028	Bracket - Front H.O.C. RH	1	
17	R132029	132029	Bracket - Front H.O.C. LH	1	
18	R338859	338859	Plate - Backup Roller Bracket	1	
19	R337593	3000983, 337593	Seal	2	
20	R132680	132680	Adjusting - Assy Rear Roller	2	
21	R3000313	3000313, 366833	Nut - Roller Adjusting	4	
22	R131879	131879	Bracket Adj Assy - Rear Roller	2	
23	R3003611	3003611	Handle - Adjusting 3/8-24 Thread	2	
24	R472519	472519	Plug - Adjusting Handle	2	
25	R3004189	3004189	Screw - Adjusting Reel 3/8-24 Thd	2	
26	R3005435	3000924, 3005435	Pin - Quick Release Swivel Hous.	1	

All original equipment manufacturers names and part numbers are used for identification purposes only, and we are in no way implying that our products are original equipment parts. Prices subject to change without notice.



Replaces Jacobsen Tri-King 1900D Parts

Cutting Unit
Reel & Bedknife



Item No	R&R Part No.	OEM Part No.	Description	Qty Req	Order Quantity
27	R364140	364140	Bushing	2	
<i>Tech Note: Pull Frame:</i>					
28	R445718	445718, 445801	Locknut - 5/8-18 All Metal	2	
29	R366974	366974	Bearing - Rod End	2	
30	R366653	366653	Spacer	2	
31	R101271	445684	Nut - Bedknife	13	
32	R101270	402698, 403757	Screw - Bedknife 3/8-24 x 13/16	13	
33	R500596	500596	Tapered Bearing Set - Cup and Cone	2	
34	R254-72	313456	Cup - Bearing	2	
38	R254-94	313089	Tapered Bearing Cone	2	
39	R364147	364147	Gasket - Cover	1	
40	R3005156	3005156	Sleeve - Wear Hardened	2	

All original equipment manufacturers names and part numbers are used for identification purposes only, and we are in no way implying that our products are original equipment parts. Prices subject to change without notice.