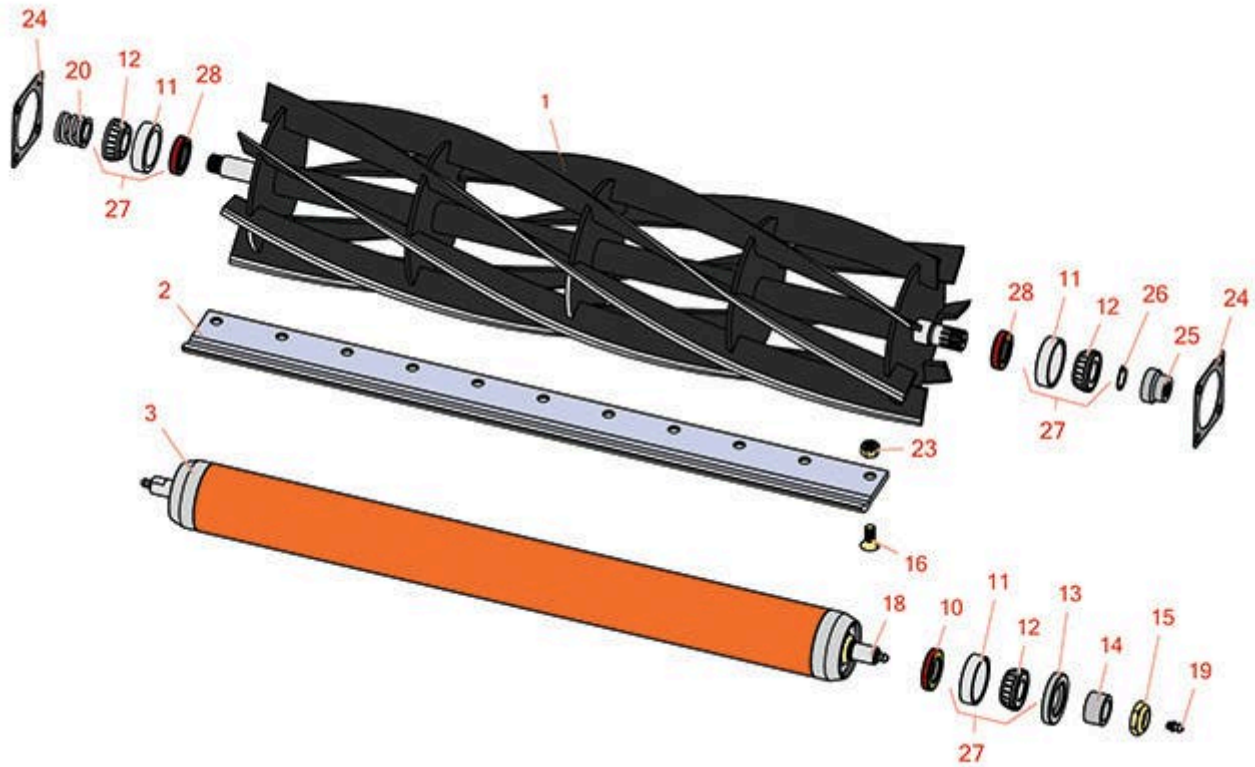




# Replaces Jacobsen Trim King Parts

Cutting Unit  
Reel & Bedknife



All original equipment manufacturers names and part numbers are used for identification purposes only, and we are in no way implying that our products are original equipment parts. Prices subject to change without notice.



# Replaces Jacobsen Trim King Parts

Cutting Unit  
Reel & Bedknife



Item No	R&R Part No.	OEM Part No.	Description	Qty Req	Order Quantity
---------	--------------	--------------	-------------	---------	----------------

## R&R Reels, Lifetime Guaranteed

1	<b>R101269</b>		Reel - 7 Blade LH	1
---	----------------	--	-------------------	---

*Detail Description:* R&R Reel blades are manufactured from high carbon-boron alloy steel and then hardened to RC46-49 to match the temper of our bedknives and original equipment bedknives. All R&R Reels are cylindrically ground on bearing surfaces and then relief ground. Reels are then precision computer balanced for extended bearing and reel life. R&R Products Reels are guaranteed against defects in material and workmanship for the life of the reel under normal use.:

1	<b>R502887</b>	502887	Reel - 5 Blade LH	1
---	----------------	--------	-------------------	---

*Detail Description:* R&R Reel blades are expertly crafted from premium high carbon-boron alloy steel, heat-treated to perfectly complement both R&R and OEM bedknives. Each reel undergoes precision cylindrical grinding on bearing surfaces, followed by relief grinding for optimal performance. Advanced computer balancing ensures extended reel and bearing life. Backed by our lifetime guarantee against defects in materials and craftsmanship under normal use, R&R Reels deliver unmatched durability and cutting precision you can trust.:

1	<b>R502888</b>	502888	Reel - 5 Blade RH/Center	1
---	----------------	--------	--------------------------	---

*Detail Description:* R&R Reel blades are expertly crafted from premium high carbon-boron alloy steel, heat-treated to perfectly complement both R&R and OEM bedknives. Each reel undergoes precision cylindrical grinding on bearing surfaces, followed by relief grinding for optimal performance. Advanced computer balancing ensures extended reel and bearing life. Backed by our lifetime guarantee against defects in materials and craftsmanship under normal use, R&R Reels deliver unmatched durability and cutting precision you can trust.:

## R&R Bedknives, Lifetime Guaranteed

2	<b>R3000249</b>	3000249, 336419, 554284	Bedknife - 7/16 - 26 Inch	1
---	-----------------	-------------------------------	---------------------------	---

## R&R Rollers

3	<b>R104120</b>	132874	Roller - Smooth Tubular Steel	1
---	----------------	--------	-------------------------------	---

*Detail Description:* Constructed with a through shaft, this heavy duty roller uses greasable tapered bearings for extended life.:

3	<b>R104125</b>	116940, 131863, 132639	Roller - Smooth Tubular Steel	0
---	----------------	------------------------------	-------------------------------	---

All original equipment manufacturers names and part numbers are used for identification purposes only, and we are in no way implying that our products are original equipment parts. Prices subject to change without notice.



# Replaces Jacobsen Trim King Parts

Cutting Unit  
Reel & Bedknife



Item No	R&R Part No.	OEM Part No.	Description	Qty Req	Order Quantity
---------	--------------	--------------	-------------	---------	----------------

*Detail Description: Constructed with a through shaft, this heavy duty roller uses greasable tapered bearings for extended life.:*

## Other Parts Available

10	<b>R253-152</b>	3001656	Seal - Inner Roller	2	
11	<b>R254-79</b>	254-79, 4121175	Cup - Bearing	2	
<i>Detail Description: Use R254-79M installation mandrel to properly install race.:</i>					
12	<b>R254-78</b>	254-78, 385174, 4121174, 4135152	Tapered Bearing Cone	2	
13	<b>R253-117</b>	253-117, 3004882	Seal - Outer Triple Lip	2	
14	<b>R5-4038</b>	5-4038	Sleeve - Wear Reel Shaft	2	
15	<b>R3296-15</b>	3296-15, 367029, 444742	Locknut - 3/4-16 Nylon Jam	2	
16	<b>R101270</b>	402698, 403757	Screw - Bedknife 3/8-24 x 13/16	11	
18	<b>R104104</b>		Shaft - Solid Roller	1	
19	<b>R302-5</b>	302-5, 471214, 471223, 471226	Fitting - Grease	2	
20	<b>R363047</b>	348846, 363047	Spring - Reel	1	
23	<b>R101271</b>	445684	Nut - Bedknife	11	
24	<b>R345473</b>	345473	Gasket - Reel Motor	1	
25	<b>R4247911</b>	162567, 337370, 4247911	Coupling - Hyd Motor - Glass Filled	1	

All original equipment manufacturers names and part numbers are used for identification purposes only, and we are in no way implying that our products are original equipment parts. Prices subject to change without notice.



# Replaces Jacobsen Trim King Parts

Cutting Unit  
Reel & Bedknife



Item No	R&R Part No.	OEM Part No.	Description	Qty Req	Order Quantity
26	<b>R458013</b>	458013	Ring - Retaining	1	
27	<b>R500534</b>	500534, R500534	Bearing - with Cup	2	
<i>Detail Description: Kit includes: 1 ea R254-78- Bearing Cone &amp; R254-79 Bearing Cone:</i>					
28	<b>R336962</b>	336962	Seal	2	

All original equipment manufacturers names and part numbers are used for identification purposes only, and we are in no way implying that our products are original equipment parts. Prices subject to change without notice.