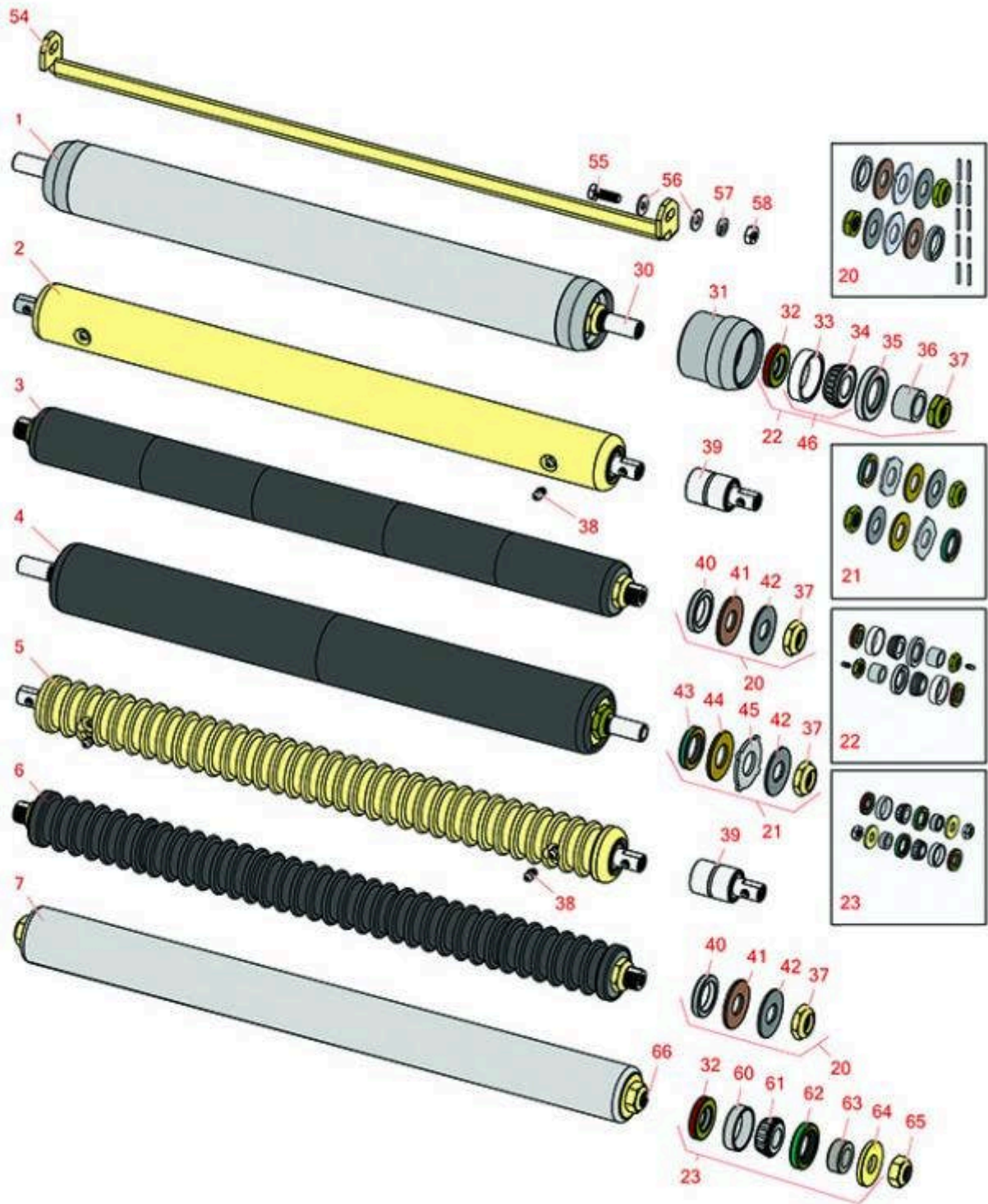




# Replaces Jacobsen LF-550 Parts

5" Cutting Unit  
Rear Rollers



All original equipment manufacturers names and part numbers are used for identification purposes only, and we are in no way implying that our products are original equipment parts. Prices subject to change without notice.



# Replaces Jacobsen LF-550 Parts

5" Cutting Unit  
Rear Rollers



Item No	R&R Part No.	OEM Part No.	Description	Qty Req	Order Quantity
---------	--------------	--------------	-------------	---------	----------------

## R&R Rear Rollers

1	<b>R100105</b>	100105, 1002446, 1003728	Roller - Smooth Heavy Duty Tubular Steel	0	
---	----------------	--------------------------------	--	---	--

*Tech Note: Constructed with a through shaft, this heavy duty roller uses tapered bearings for extended life. This roller body measures 21" in length.:*

2	<b>R68597</b>	68597	Roller - Smooth Solid Steel	0	
---	---------------	-------	-----------------------------	---	--

*Tech Note: Machined from solid steel, this heavy weight roller uses greasable "water-pump" style bearings.:*

3	<b>R101335</b>		Roller - Smooth UHMW Polyethylene	0	
---	----------------	--	-----------------------------------	---	--

*Tech Note: Machined from solid UHMW, this low maintenance roller uses a 1" solid stainless steel shaft and requires no grease. UHMW material prevents build-up of debris.:*

4	<b>R1013662</b>		Roller - Smooth UHMW Polyethylene	0	
---	-----------------	--	-----------------------------------	---	--

*Tech Note: Machined from solid UHMW, this low maintenance roller uses a 1" solid stainless steel shaft and requires no grease. UHMW material prevents build-up of debris.:*

5	<b>R101120</b>	101120, 68580	Roller - Grooved Machined Solid Steel	0	
---	----------------	------------------	---------------------------------------	---	--

*Tech Note: Machined from solid steel, this heavy weight roller uses greasable "water-pump" style bearings.:*

6	<b>R101337</b>		Roller - Grooved UHMW Polyethylene	0	
---	----------------	--	------------------------------------	---	--

*Tech Note: Machined from solid UHMW, this low maintenance roller rotates around a 1" solid stainless steel shaft and requires no bearings or grease. Patented groove design and smooth UHMW material prevents build-up of debris. Shaft length measures 26-3/4":*

7	<b>R1000770</b>	1000770	Roller - Smooth Heavy Duty Tubular Steel	0	
---	-----------------	---------	--	---	--

*Tech Note: Constructed with a through shaft, this heavy-duty roller uses tapered bearings for extended life. Body length measures 23-1/4":*

## Overhaul Kits

All original equipment manufacturers names and part numbers are used for identification purposes only, and we are in no way implying that our products are original equipment parts. Prices subject to change without notice.



# Replaces Jacobsen LF-550 Parts

5" Cutting Unit  
Rear Rollers



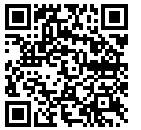
Item No	R&R Part No.	OEM Part No.	Description	Qty Req	Order Quantity
20	<b>R101395</b>	100139, 101395	Overhaul Kit - UHMW Roller	1	
<i>Tech Note: Fits all R&amp;R 2" Dia. Black UHMW Polyethylene Rollers. Includes 10 ea.: R150322 Roll Pins; 2 ea.: R3296-15 Locknuts, R150347T Teflon Seals, R150333 Thrust Washers, &amp; R150334A Bronze Thrust Washers:</i>					
21	<b>R101399</b>		Overhaul Kit - UHMW 2 Pc Roller	1	
<i>Tech Note: Fits all R&amp;R 2-1/2" - 3-1/2" Dia. Black UHMW Plastic Rollers that do not use ball bearings.. Includes 2 ea.: R1503230 Star Washers, R1503470 Seals, R150333 Thrust Washers, R3296-15 Locknuts, R1503471 Bronze Thrust Washers:</i>					
22	<b>R100136</b>		Overhaul Kit - Roller	1	
<i>Tech Note: Includes 2 ea.: R150674 Wear Sleeves, R253-152 Seals, R253-117 Seals, R254-78 Bearings, R254-79 Bearing Cups, R3296-15 Locknuts &amp; R302-5 Grease Fittings:</i>					
23	<b>R100139</b>		Overhaul Kit - Roller	1	
<i>Tech Note: Includes 2 ea.: R254-67 Bearing Cups, R254-68 Bearing Cones, R337593 Seals, R253-152 Seals R3001762 Wear Sleeves, R3000698 Washers &amp; R445718 Locknuts:</i>					
<b>Other Parts Available</b>					
30	<b>R100106</b>	100106	Shaft - Fits HD Rear Roller	1	
31	<b>R61-0380</b>		Roller End - Cap Solid	2	
32	<b>R253-152</b>	3001656	Seal - Inner Roller	2	
33	<b>R254-79</b>	254-79, 4121175	Cup - Bearing	2	
<i>Tech Note: Use R254-79M installation mandrel to properly install race.:</i>					
34	<b>R254-78</b>	254-78, 385174, 4121174, 4135152	Tapered Bearing Cone	2	
35	<b>R253-117</b>	253-117, 3004882	Seal - Outer Triple Lip	2	
36	<b>R150674</b>	150674	Sleeve - Wear 3/4 Plated	2	

All original equipment manufacturers names and part numbers are used for identification purposes only, and we are in no way implying that our products are original equipment parts. Prices subject to change without notice.



# Replaces Jacobsen LF-550 Parts

5" Cutting Unit  
Rear Rollers



Item No	R&R Part No.	OEM Part No.	Description	Qty Req	Order Quantity
37	<b>R3296-15</b>	3296-15, 367029, 444742	Locknut - 3/4-16 Nylon Jam	2	
38	<b>R302-5</b>	302-5, 471214, 471223, 471226	Fitting - Grease	2	
39	<b>R101482</b>	101482	Bearing - Rear Machined Roller	2	
40	<b>R150347T</b>		Seal - Nonstick Lip	2	
41	<b>R150334A</b>		Washer - Thrust SAE660 Bronze	2	
42	<b>R150333</b>		Washer - Flat Keyed Outer SS	2	
43	<b>R1503470</b>		Seal - Inner Wiper	2	
44	<b>R1503471</b>		Washer - Thrust SAE660 Bronze	2	
45	<b>R1503230</b>		Washer - Thrust Outer Keyed	2	
46	<b>R500534</b>	500534, R500534	Bearing - with Cup	2	
54	<b>R338735</b>	338735	Scraper - Rear Roller	1	
55	<b>R400186</b>	400186	Bolt - Hex HD 5/16-18 x 7/8	2	
56	<b>R310266</b>	310266, 452004, 452006, 452008	Washer - Flat 5/16 USS	2	
56	<b>R453009</b>	3256-23, 452004, 452006, 452008, 453009	Washer - Flat 5/16 SAE	2	
57	<b>R446136</b>	446134, 446136	Washer - Lock 5/16 Zinc	2	
58	<b>R443106</b>	443106	Nut - 5/16-18 Y/Zinc Plated	2	

All original equipment manufacturers names and part numbers are used for identification purposes only, and we are in no way implying that our products are original equipment parts. Prices subject to change without notice.



# Replaces Jacobsen LF-550 Parts

5" Cutting Unit

Rear Rollers



Item No	R&R Part No.	OEM Part No.	Description	Qty Req	Order Quantity
60	<b>R254-67</b>	307108, 5000625, 500625	Cup - Bearing	2	
61	<b>R254-68</b>	307109, 5000625, 500625	Tapered Bearing Cone	2	
62	<b>R337593</b>	3000983, 337593	Seal	2	
63	<b>R3001762</b>	30001762, 3001762	Sleeve - Wear Hardened	2	
64	<b>R3000698</b>	3000698	Washer	2	
65	<b>R3296-33</b>	444820, 445718, 445801	Locknut - 5/8-18 ESNA Jam	2	
66	<b>R3001654</b>	3001654	Shaft - Roller	1	

All original equipment manufacturers names and part numbers are used for identification purposes only, and we are in no way implying that our products are original equipment parts. Prices subject to change without notice.