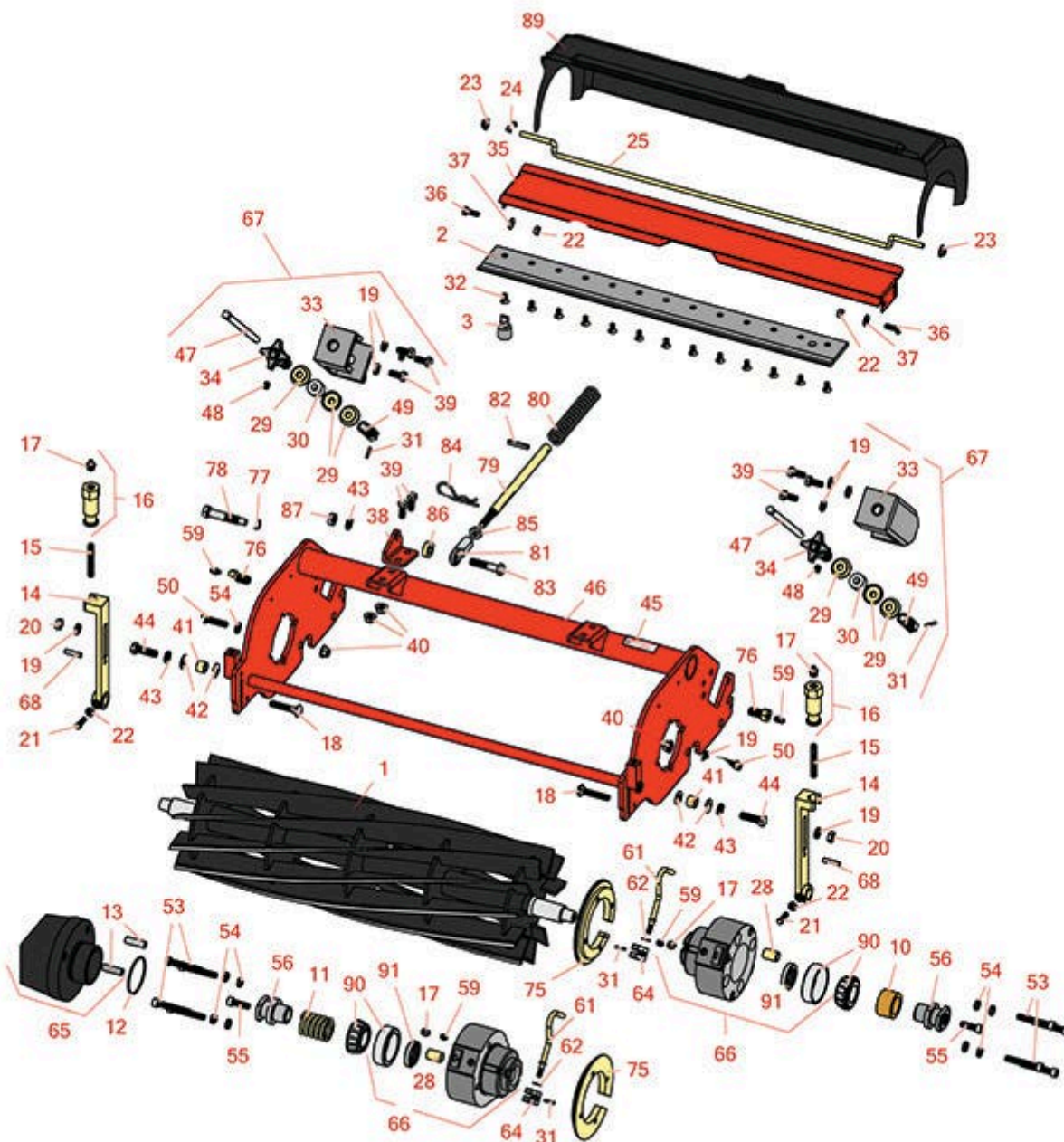




# Replaces Jacobsen LF-3407 Parts

7" Cutting Unit  
Reel & Bedknife



All original equipment manufacturers names and part numbers are used for identification purposes only, and we are in no way implying that our products are original equipment parts. Prices subject to change without notice.



## Replaces Jacobsen LF-3407 Parts

7" Cutting Unit  
Reel & Bedknife



Item No	R&R Part No.	OEM Part No.	Description	Qty Req	Order Quantity
---------	--------------	--------------	-------------	---------	----------------

### R&R Reels, Lifetime Guaranteed

1	<b>R2810471</b>	2810471	Reel - 9 Blade	1	
---	-----------------	---------	----------------	---	--

*Detail Description:* R&R Reel blades are expertly crafted from premium high carbon-boron alloy steel, heat-treated to perfectly complement both R&R and OEM bedknives. Each reel undergoes precision cylindrical grinding on bearing surfaces, followed by relief grinding for optimal performance. Advanced computer balancing ensures extended reel and bearing life. Backed by our lifetime guarantee against defects in materials and craftsmanship under normal use, R&R Reels deliver unmatched durability and cutting precision you can trust.:

1	<b>R5002762</b>	2810472, 5002762	Reel - 11 Blade	1	
---	-----------------	---------------------	-----------------	---	--

*Detail Description:* R&R Reel blades are expertly crafted from premium high carbon-boron alloy steel, heat-treated to perfectly complement both R&R and OEM bedknives. Each reel undergoes precision cylindrical grinding on bearing surfaces, followed by relief grinding for optimal performance. Advanced computer balancing ensures extended reel and bearing life. Backed by our lifetime guarantee against defects in materials and craftsmanship under normal use, R&R Reels deliver unmatched durability and cutting precision you can trust.:

### R&R Bedknives, Lifetime Guaranteed

2	<b>R503460</b>	503257, 503460	Bedknife - 22 in 13 Hole	1	
---	----------------	-------------------	--------------------------	---	--

*Detail Description:* R&R Bedknives are manufactured from high carbon-boron alloy steel and then hardened to RC46-49 to match the temper of our reel blades and original equipment reels. Bedknives are surface ground on the top and front edge and straightened three times before being packaged with oil for rust prevention. All R&R Bedknives now have an increased front edge grind for added life. All R&R Bedknives are guaranteed against defects in material and workmanship under normal use for the life of the part.:

### R&R Razor Tool Steel Bedknives, Lifetime Guaranteed

2	<b>R101523</b>		Bedknife - Razor Tool Steel - 22 High Cut	1	
---	----------------	--	---	---	--

*Detail Description:* R&R Razor bedknives are manufactured from premium alloy tool steel steel and then hardened to RC48-51 to match the temper of our Razor reel blades and original equipment premium series reels. Bedknives are surface ground on the top and front edge and specially packaged for rust prevention. All R&R Bedknives now have an increased front edge grind for added life. All R&R Bedknives are guaranteed against defects in material and workmanship under normal use for the life of the part. You can expect up to double the life over standard bedknives.:

### Service Tools

All original equipment manufacturers names and part numbers are used for identification purposes only, and we are in no way implying that our products are original equipment parts. Prices subject to change without notice.



## Replaces Jacobsen LF-3407 Parts

7" Cutting Unit  
Reel & Bedknife



Item No	R&R Part No.	OEM Part No.	Description	Qty Req	Order Quantity
---------	--------------	--------------	-------------	---------	----------------

3	<b>R101272T</b>		Bedknife Screw Driver Tool	0	
---	-----------------	--	----------------------------	---	--

*Tech Note: Easily install and remove bed knife screws with the help of a ratchet. Tool manufactured with hardened alloy steel.:*

*Detail Description: Easily install and remove bed knife screws with the help of a ratchet. Tool manufactured with hardened alloy steel.:*

### Other Parts Available

10	<b>R3004800</b>	3004800	Spacer - Hardened Reel	1	
11	<b>R3004734</b>	3004734	Spring - Compression	1	
12	<b>R3006021</b>	3006021	O-Ring	1	
13	<b>R3006022</b>	3006022	Pin - Hardened Counter Balance	2	
14	<b>R3004738</b>	3004738	Adjuster - Front Roller	2	
15	<b>R343616</b>	343616, 443102	Stud	2	
16	<b>R365009</b>	3005692, 365009, 365170, 441674	Knob - Adjusting Roller	2	
17	<b>R170714</b>	170714, 471240, 471242	Fitting - Pressure Relief	4	
18	<b>R441674</b>	441674	Screw - 5/16-18 x 1-3/4 Carriage	2	
19	<b>R446136</b>	446134, 446136	Washer - Lock 5/16 Zinc	2	
20	<b>R443106</b>	443106	Nut - 5/16-18 Y/Zinc Plated	2	
21	<b>R352737</b>	352737	Screw - Set 1/4 x 7/8 Sq Head	2	
22	<b>R443102</b>	443102	Nut - 1/4-20 Yellow Zinc	4	
23	<b>R445525</b>	445525	Nut - 1/4 Pal	2	

All original equipment manufacturers names and part numbers are used for identification purposes only, and we are in no way implying that our products are original equipment parts. Prices subject to change without notice.



## Replaces Jacobsen LF-3407 Parts

7" Cutting Unit  
Reel & Bedknife



Item No	R&R Part No.	OEM Part No.	Description	Qty Req	Order Quantity
24	<b>R3009281</b>	3009281	Spring - Torsion 22 Roller	1	
24	<b>R3005267</b>	3005267	Spring - Torsion 24 Roller	1	
25	<b>R3009280</b>	3009280	Scraper - 22 Rear Roller (Rod)	1	
25	<b>R3005316</b>	3005316	Scraper - 24 Rear Roller (Rod)	1	
28	<b>R545940</b>	2500759, 545940	Bushing	2	
29	<b>R3009892</b>	3009075, 3009892	Spacer - Cup	6	
30	<b>R3010470</b>	3008946, 3010470	Spring - Urethane	1	
31	<b>R012419</b>	461357, 461359	Pin - Roll 1/8 x 3/4	2	
32	<b>R101272</b>	101272, 3009138, 402578, 800813	Screw - Bedknife 1/4-20 x 1/2	13	
33	<b>R3004795</b>	3004795	Housing - Bed Knife Adj	1	
34	<b>R2000125</b>	2000125, 2000215	Knob, Bedknife Adj.	2	
35	<b>R3006248</b>	3006248	Deflector	1	
36	<b>R321-4</b>	321-4, 400108	Bolt - Hex HD 1/4-20 x 3/4	2	
37	<b>R453023</b>	453023	Washer - Flat 1/4	2	
38	<b>R3008601</b>	3008601	Bracket - Spring Holddown	1	
39	<b>R400184</b>	400184, 400194	Screw - 5/16-18 x 3/4 Hex	2	
40	<b>R445795</b>	445795	Nut - 5/16-18 Flanged	2	
41	<b>R3006290</b>	3006290	Spacer - Hardened	2	

All original equipment manufacturers names and part numbers are used for identification purposes only, and we are in no way implying that our products are original equipment parts. Prices subject to change without notice.



## Replaces Jacobsen LF-3407 Parts

7" Cutting Unit  
Reel & Bedknife



Item No	R&R Part No.	OEM Part No.	Description	Qty Req	Order Quantity
42	<b>R453011</b>	453011	Washer - Flat 3/8 SAE Y/Zinc	4	
43	<b>R3254-6</b>	3254-6, 446140, 446142	Washer - Lock 3/8	2	
44	<b>R400264</b>	400264	Bolt - Hex HD 3/8-16 x 1-1/4	2	
45	<b>R354083</b>	354083, 361877, 4127335	Decal - Danger	2	
46	<b>R5002609</b>	5002609	Frame	1	
47	<b>R3010472</b>	3004798, 3010472	Rod - Bedknife Adj	1	
48	<b>R422511</b>	422511	Screw - Set w/Nylon Plug	1	
49	<b>R3010471</b>	3004799, 3009894, 3010471	Bolt - Special	1	
50	<b>R434036</b>	434036	Screw - Soc HD 5/16-18 x 1-1/4	2	
53	<b>R434049</b>	434049	Bolt - Soc HD Cap 5/16-18 x 2	8	
54	<b>R362643</b>	362643	Spacer - Brg Housing	8	
55	<b>R434004</b>	434003, 434004	Screw - Soc HD 5/16-18 x 1	2	
56	<b>R4166860</b>	3004737, 3010046, 4166860	Coupler	2	
59	<b>R302-5</b>	302-5, 471214, 471223, 471226	Fitting - Grease	2	
61	<b>R3006028</b>	3006028	Rod	2	
62	<b>R455066</b>	455066	Washer - M6 Flat	2	

All original equipment manufacturers names and part numbers are used for identification purposes only, and we are in no way implying that our products are original equipment parts. Prices subject to change without notice.



## Replaces Jacobsen LF-3407 Parts

7" Cutting Unit  
Reel & Bedknife



Item No	R&R Part No.	OEM Part No.	Description	Qty Req	Order Quantity
64	<b>R4130092</b>	4130092	Block - Clamp	2	
65	<b>R2000135</b>	2000135	Casting - Weight - Counter Balance	1	
66	<b>R1002811</b>	1002811	Bearing Housing Assy	2	
67	<b>R1002532</b>	1002532	Adjusting Assy - Bedknife	2	
68	<b>R461256</b>	461256	Pin - 1/4 x 1	2	
75	<b>R3005210</b>	3005210	Ring - Retaining	2	
76	<b>R345470</b>	1002226, 345470	Bolt - Rear Roller 7/16-20	2	
<i>Detail Description: Incl. Grease Zerk:</i>					
77	<b>R454017</b>	454017	Shim - Bed Bar Bolt	2	
78	<b>R347169</b>	347169, 365501	Stud - Backing RH 2-5/16	2	
79	<b>R3008593</b>	3008593	Shaft - Down Pressure	1	
80	<b>R311870</b>	311870	Spring - Compression	1	
81	<b>R366974</b>	366974	Bearing - Rod End	1	
82	<b>R461397</b>	461397	Pin - Roll 1/4 x 1-1/4	1	
83	<b>R400266</b>	400266	Bolt - Hex HD 3/8-16 x 1-1/2	1	
83	<b>R400268</b>	400268	Bolt - Hex HD 3/8-16 x 1-3/4	1	
84	<b>R460312</b>	460312	Pin - Hair Cotter	1	
85	<b>R3219-3</b>	3219-3, 443112, 443812	Nut - 3/8-24	1	
86	<b>R352435</b>	352435	Spacer	1	
87	<b>R443110</b>	306562, 443110, 444762	Nut - 3/8-16 Hex	1	

All original equipment manufacturers names and part numbers are used for identification purposes only, and we are in no way implying that our products are original equipment parts. Prices subject to change without notice.



## Replaces Jacobsen LF-3407 Parts

7" Cutting Unit  
Reel & Bedknife



Item No	R&R Part No.	OEM Part No.	Description	Qty Req	Order Quantity
89	<b>R3005209</b>	3005209	Shield - Grass	1	
90	<b>R5002477</b>	5002477	Bearing - w/Cup	2	
91	<b>R3006030</b>	3006030	Seal	2	

All original equipment manufacturers names and part numbers are used for identification purposes only, and we are in no way implying that our products are original equipment parts. Prices subject to change without notice.