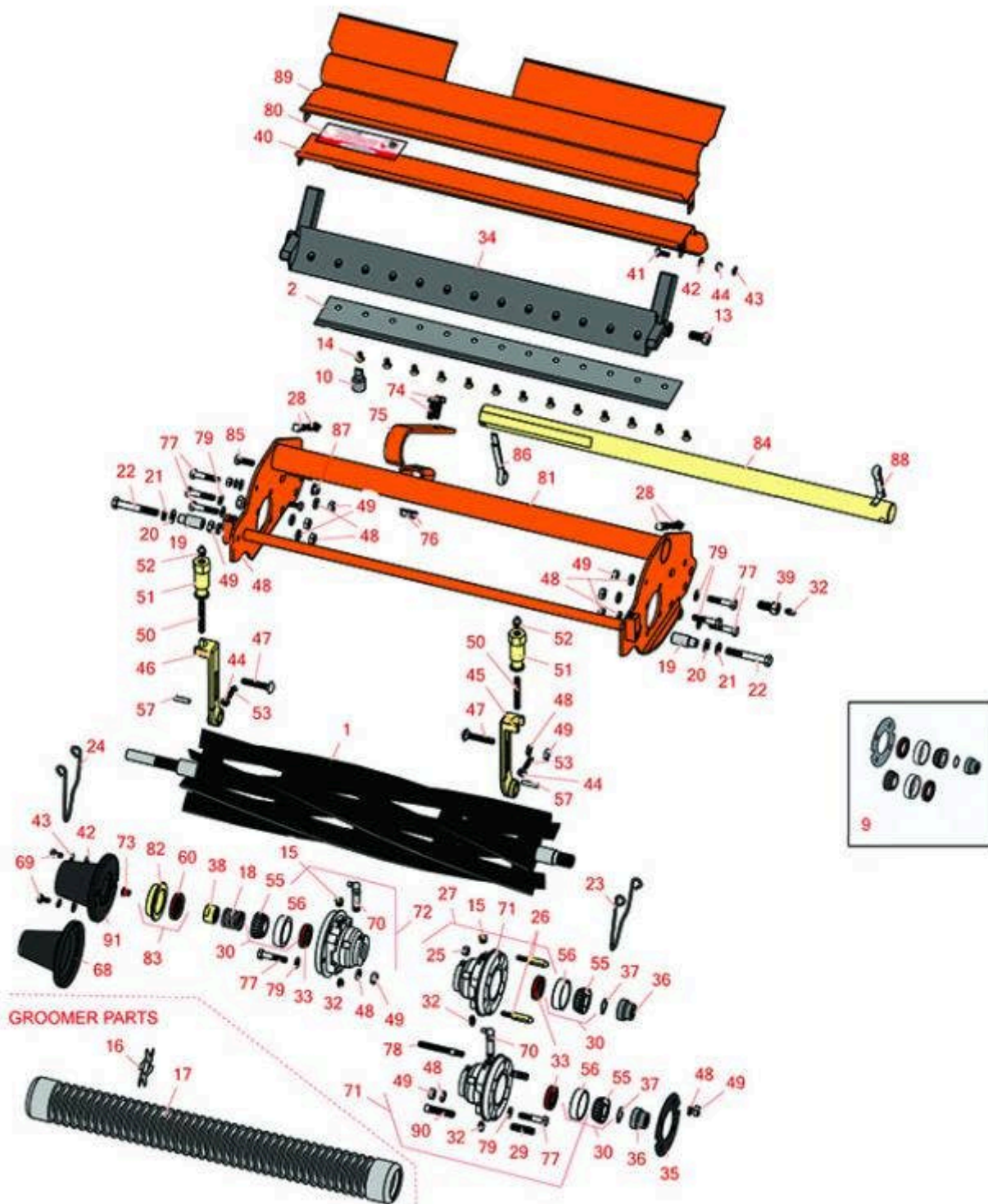




Replaces Jacobsen LF-128 Parts

Cutting Unit
Reel & Bedknife



All original equipment manufacturers names and part numbers are used for identification purposes only, and we are in no way implying that our products are original equipment parts. Prices subject to change without notice.



Replaces Jacobsen LF-128 Parts

Cutting Unit
Reel & Bedknife



| Item No | R&R Part No. | OEM Part No. | Description | Qty Req | Order Quantity |
|---------|--------------|--------------|-------------|---------|----------------|
|---------|--------------|--------------|-------------|---------|----------------|

R&R Reels, Lifetime Guaranteed

| | | | | | |
|---|----------------|--------------------------------|-------------------|---|--|
| 1 | R503319 | 5001095, 5003053, 503319 | Reel - 7 Blade LH | 2 | |
|---|----------------|--------------------------------|-------------------|---|--|

Detail Description: R&R Reel blades are expertly crafted from premium high carbon-boron alloy steel, heat-treated to perfectly complement both R&R and OEM bedknives. Each reel undergoes precision cylindrical grinding on bearing surfaces, followed by relief grinding for optimal performance. Advanced computer balancing ensures extended reel and bearing life. Backed by our lifetime guarantee against defects in materials and craftsmanship under normal use, R&R Reels deliver unmatched durability and cutting precision you can trust.:

| | | | | | |
|---|----------------|--|-------------------|---|--|
| 1 | R503320 | 5001096, 5003054, 5003064, 503320 | Reel - 7 Blade RH | 3 | |
|---|----------------|--|-------------------|---|--|

Detail Description: R&R Reel blades are expertly crafted from premium high carbon-boron alloy steel, heat-treated to perfectly complement both R&R and OEM bedknives. Each reel undergoes precision cylindrical grinding on bearing surfaces, followed by relief grinding for optimal performance. Advanced computer balancing ensures extended reel and bearing life. Backed by our lifetime guarantee against defects in materials and craftsmanship under normal use, R&R Reels deliver unmatched durability and cutting precision you can trust.:

| | | | | | |
|---|----------------|--------------------|-------------------|---|--|
| 1 | R503321 | 5001097, 503321 | Reel - 5 Blade LH | 2 | |
|---|----------------|--------------------|-------------------|---|--|

Detail Description: R&R Reel blades are expertly crafted from premium high carbon-boron alloy steel, heat-treated to perfectly complement both R&R and OEM bedknives. Each reel undergoes precision cylindrical grinding on bearing surfaces, followed by relief grinding for optimal performance. Advanced computer balancing ensures extended reel and bearing life. Backed by our lifetime guarantee against defects in materials and craftsmanship under normal use, R&R Reels deliver unmatched durability and cutting precision you can trust.:

| | | | | | |
|---|----------------|--------------------|-------------------|---|--|
| 1 | R503322 | 5001098, 503322 | Reel - 5 Blade RH | 3 | |
|---|----------------|--------------------|-------------------|---|--|

Detail Description: R&R Reel blades are expertly crafted from premium high carbon-boron alloy steel, heat-treated to perfectly complement both R&R and OEM bedknives. Each reel undergoes precision cylindrical grinding on bearing surfaces, followed by relief grinding for optimal performance. Advanced computer balancing ensures extended reel and bearing life. Backed by our lifetime guarantee against defects in materials and craftsmanship under normal use, R&R Reels deliver unmatched durability and cutting precision you can trust.:

| | | | | | |
|---|----------------|-------------------|--------------------------|---|--|
| 2 | R503460 | 503257, 503460 | Bedknife - 22 in 13 Hole | 0 | |
|---|----------------|-------------------|--------------------------|---|--|

All original equipment manufacturers names and part numbers are used for identification purposes only, and we are in no way implying that our products are original equipment parts. Prices subject to change without notice.



Replaces Jacobsen LF-128 Parts

Cutting Unit
Reel & Bedknife



| Item No | R&R Part No. | OEM Part No. | Description | Qty Req | Order Quantity |
|---------|--------------|--------------|-------------|---------|----------------|
|---------|--------------|--------------|-------------|---------|----------------|

Detail Description: R&R Bedknives are manufactured from high carbon-boron alloy steel and then hardened to RC46-49 to match the temper of our reel blades and original equipment reels. Bedknives are surface ground on the top and front edge and straightened three times before being packaged with oil for rust prevention. All R&R Bedknives now have an increased front edge grind for added life. All R&R Bedknives are guaranteed against defects in material and workmanship under normal use for the life of the part.:

R&R Razor Tool Steel Bedknives, Lifetime Guaranteed

| | | | | | |
|---|---------|--|---|---|--|
| 2 | R101523 | | Bedknife - Razor Tool Steel - 22 High Cut | 1 | |
|---|---------|--|---|---|--|

Detail Description: R&R Razor bedknives are manufactured from premium alloy tool steel steel and then hardened to RC48-51 to match the temper of our Razor reel blades and original equipment premium series reels. Bedknives are surface ground on the top and front edge and specially packaged for rust prevention. All R&R Bedknives now have an increased front edge grind for added life. All R&R Bedknives are guaranteed against defects in material and workmanship under normal use for the life of the part. You can expect up to double the life over standard bedknives.:

Overhaul Kits & Service Tools

| | | | | | |
|---|---------|--|-----------------------------|---|--|
| 9 | R100125 | | Overhaul Kit - Cutting Unit | 0 | |
|---|---------|--|-----------------------------|---|--|

Detail Description: Includes 2 ea.: R336962 Seals, R254-78 Bearings, R254-79 Cups; 1 ea.:R337677 Seal, R458013 Ring, R364901Gasket, R337370 Coupling:

| | | | | | |
|----|----------|--|----------------------------|---|--|
| 10 | R101272T | | Bedknife Screw Driver Tool | 0 | |
|----|----------|--|----------------------------|---|--|

Tech Note: Easily install and remove bed knife screws with the help of a ratchet. Tool manufactured with hardened alloy steel.:

Detail Description: Easily install and remove bed knife screws with the help of a ratchet. Tool manufactured with hardened alloy steel.:

Other Parts Available

| | | | | | |
|----|---------|--|-------------------------------|----|--|
| 13 | R315298 | 315298 | Bolt - Bed Bar | 2 | |
| 14 | R101272 | 101272, 3009138, 402578, 800813 | Screw - Bedknife 1/4-20 x 1/2 | 13 | |
| 15 | R170714 | 170714, 471240, 471242 | Fitting - Pressure Relief | 2 | |

All original equipment manufacturers names and part numbers are used for identification purposes only, and we are in no way implying that our products are original equipment parts. Prices subject to change without notice.



Replaces Jacobsen LF-128 Parts

Cutting Unit
Reel & Bedknife



| Item No | R&R Part No. | OEM Part No. | Description | Qty Req | Order Quantity |
|--|--------------|---|----------------------------------|---------|----------------|
| 16 | R365230 | 365230 | Verti-Cut Blade - 2-1/2 Dia. | 40 | |
| 17 | R390900 | 390900 | Roller - Grooved 2-1/2 x 22 | 1 | |
| <i>Detail Description: Note: w/ 1/2 Spacing:</i> | | | | | |
| 18 | R363047 | 348846, 363047 | Spring - Reel | 1 | |
| 19 | R101525 | 101525 | Spacer - Mower Mounting Assy | 2 | |
| 20 | R453011 | 453011 | Washer - Flat 3/8 SAE Y/Zinc | 4 | |
| 21 | R3254-6 | 3254-6, 446140, 446142 | Washer - Lock 3/8 | 2 | |
| 22 | R101526 | 101526 | Bolt - Hex HD 3/8-16 x 2-1/2 GR5 | 2 | |
| 23 | R2810166 | 2810166, 3010637 | Clip - Spring Motor | 1 | |
| 24 | R2810165 | 2810165, 2810166, 3010236, 3010636 | Clip - Spring Motor | 1 | |
| 25 | R32152-4 | 32152-4, 444708 | Locknut - 1/4-20 All Metal | 2 | |
| 26 | R3010296 | 3010296 | Pin - Motor Mounting | 2 | |
| 27 | R1004786 | 1004786 | Housing - Bearing Quick Clip | 1 | |
| <i>Detail Description: Includes: R336962, R302-5, R254-79, R3010296, R32152-4 & R170714:</i> | | | | | |
| 28 | R412506 | 412503, 412506 | Screw - Bed Bar Adjusting | 4 | |
| 29 | R101327 | | Stud - Housing | 2 | |
| <i>Detail Description: Fits R101328 Only:</i> | | | | | |
| 30 | R500534 | 500534, R500534 | Bearing - with Cup | 2 | |

All original equipment manufacturers names and part numbers are used for identification purposes only, and we are in no way implying that our products are original equipment parts. Prices subject to change without notice.



Replaces Jacobsen LF-128 Parts

Cutting Unit
Reel & Bedknife



| Item No | R&R Part No. | OEM Part No. | Description | Qty Req | Order Quantity |
|---------|--------------|--------------|-------------|---------|----------------|
|---------|--------------|--------------|-------------|---------|----------------|

Detail Description: Kit includes: 1 ea R254-78- Bearing Cone & R254-79 Bearing Cone:

| | | | | | |
|----|-----------------|--|-------------------------------------|---|--|
| 32 | R302-5 | 302-5, 471214, 471223, 471226 | Fitting - Grease | 2 | |
| 33 | R336962 | 336962 | Seal | 2 | |
| 34 | R220278 | 121856, 220278, 5000415 | Backing Bar - Cast | 1 | |
| 34 | R2000068 | 2000068 | Bed Bar | 1 | |
| 35 | R364901 | 364901 | Gasket - Reel Motor | 1 | |
| 36 | R4247911 | 162567, 337370, 4247911 | Coupling - Hyd Motor - Glass Filled | 1 | |
| 36 | R3001720 | 3001720 | Coupler - Iron - Hyd Motor | 1 | |
| 37 | R458013 | 458013 | Ring - Retaining | 1 | |
| 38 | R364900 | 364900 | Nut - Reel Tension | 1 | |
| 39 | R345470 | 1002226, 345470 | Bolt - Rear Roller 7/16-20 | 2 | |

Detail Description: Incl. Grease Zerk:

| | | | | | |
|----|----------------|-------------------------------|----------------------------|---|--|
| 40 | R390950 | 126724, 2810043, 390950 | Shield - Grass | 1 | |
| 41 | R400106 | 400106 | Bolt - Hex HD 1/4-20 x 5/8 | 2 | |
| 42 | R453023 | 453023 | Washer - Flat 1/4 | 4 | |
| 43 | R3253-3 | 3253-3, 446128, 446130 | Washer - Lock 1/4 | 4 | |
| 44 | R443102 | 443102 | Nut - 1/4-20 Yellow Zinc | 2 | |

All original equipment manufacturers names and part numbers are used for identification purposes only, and we are in no way implying that our products are original equipment parts. Prices subject to change without notice.



Replaces Jacobsen LF-128 Parts

Cutting Unit
Reel & Bedknife



| Item No | R&R Part No. | OEM Part No. | Description | Qty Req | Order Quantity |
|---|----------------|---|----------------------------------|---------|----------------|
| 45 | R153979 | 153979, 3008439 | Bracket - Front Roller | 1 | |
| 46 | R153980 | 153980, 3008438 | Bracket - Front Roller | 1 | |
| 47 | R441674 | 441674 | Screw - 5/16-18 x 1-3/4 Carriage | 2 | |
| 48 | R446136 | 446134, 446136 | Washer - Lock 5/16 Zinc | 2 | |
| 49 | R443106 | 443106 | Nut - 5/16-18 Y/Zinc Plated | 2 | |
| 50 | R343616 | 343616, 443102 | Stud | 2 | |
| 51 | R365009 | 3005692, 365009, 365170, 441674 | Knob - Adjusting Roller | 2 | |
| 52 | R471219 | 366852, 471219 | Zerk - Grease | 2 | |
| 53 | R352737 | 352737 | Screw - Set 1/4 x 7/8 Sq Head | 2 | |
| 55 | R254-78 | 254-78, 385174, 4121174, 4135152 | Tapered Bearing Cone | 2 | |
| 56 | R254-79 | 254-79, 4121175 | Cup - Bearing | 2 | |
| <i>Detail Description: Use R254-79M installation mandrel to properly install race.:</i> | | | | | |
| 57 | R461256 | 461256 | Pin - 1/4 x 1 | 2 | |
| 60 | R337677 | 315257, 337677 | Seal - Oil | 1 | |
| 68 | R338675 | 338675, 557775 | Cover - Shaft End | 1 | |
| 69 | R400104 | 400104 | Bolt - Hex HD 1/4-20 x 1/2 | 2 | |

All original equipment manufacturers names and part numbers are used for identification purposes only, and we are in no way implying that our products are original equipment parts. Prices subject to change without notice.



Replaces Jacobsen LF-128 Parts

Cutting Unit
Reel & Bedknife



| Item No | R&R Part No. | OEM Part No. | Description | Qty Req | Order Quantity |
|---|----------------|---|------------------------------------|---------|----------------|
| 70 | R363896 | 363896 | Fitting - Grease w/Extension | 2 | |
| 71 | R163396 | 163396 | Housing - Reel Brg Motor End | 1 | |
| <i>Detail Description: Includes: 4 ea: R361097 Stud; 1 ea: R254-79 Cup, R336962 Seal, R363896 Grease Fitting:</i> | | | | | |
| 71 | R164146 | 163679, 164146 | Housing - Reel Bearing - Motor End | 1 | |
| <i>Tech Note: Housing has no studs, uses 2 bolts:</i> | | | | | |
| <i>Detail Description: Includes: 1 ea: R170714 Fitting, R254-79 Cup, R302-5 Fitting & R336962 Seal:</i> | | | | | |
| 71 | R101328 | | Housing - Bearing Motor End | 1 | |
| <i>Detail Description: Includes R302-5, R336962, R170714, R101327 & Cup Portion of R500534. Housing has 2 studs, uses no bolts:</i> | | | | | |
| 72 | R164144 | 1000480, 163397, 164144, 2000060 | Housing - Reel Bearing | 1 | |
| <i>Detail Description: Includes R336962 Seal, R302-5 Zerk, R170714 Relief Fitting & R254-79 Cup:</i> | | | | | |
| 73 | R352132 | 352132 | Caplug - Reel Shaft End | 1 | |
| 74 | R403751 | 403751 | Bolt - Serrated Washer HD | 2 | |
| 75 | R354928 | 354928 | Stop - Mower | 1 | |
| 76 | R445722 | 445722 | Nut - Serrated Washer | 2 | |
| 77 | R400192 | 400192 | Bolt - Hex HD 5/16-18 x 1-1/2 | 8 | |
| 78 | R361097 | 361097 | Stud - Reel Brg Housing | 1 | |
| 79 | R453009 | 3256-23, 452004, 452006, 452008, 453009 | Washer - Flat 5/16 SAE | 4 | |

All original equipment manufacturers names and part numbers are used for identification purposes only, and we are in no way implying that our products are original equipment parts. Prices subject to change without notice.



Replaces Jacobsen LF-128 Parts

*Cutting Unit
Reel & Bedknife*



| Item No | R&R Part No. | OEM Part No. | Description | Qty Req | Order Quantity |
|---------|-----------------|-------------------------------|-----------------------------|---------|----------------|
| 80 | R354083 | 354083, 361877, 4127335 | Decal - Danger | 1 | |
| 81 | R122685 | 119245, 122685, 503325 | Frame | 1 | |
| 82 | R363814 | 163892, 363814 | Spacer - Seal | 1 | |
| 83 | R163398 | 163398, 163892 | Seal - Spacer Assy | 1 | |
| 84 | R364898 | 364898 | Shaft - Weight Bar | 1 | |
| 85 | R400186 | 400186 | Bolt - Hex HD 5/16-18 x 7/8 | 1 | |
| 86 | R460080 | 460080 | Pin - Cotter 3/8 x 3 | 1 | |
| 87 | R445781 | 445781 | Nut - 5/16-18 Whiz | 1 | |
| 88 | R460068 | 460068 | Pin - Cotter 1/4 x 2 | 4 | |
| 89 | R390940 | 390940, 67780 | Deflector - Rear Discharge | 1 | |
| 90 | R441812 | 441812 | Screw - 3/8-1-1/2 Sq HD Set | 2 | |
| 91 | R2000065 | 2000065 | Weight - Counter | 1 | |

All original equipment manufacturers names and part numbers are used for identification purposes only, and we are in no way implying that our products are original equipment parts. Prices subject to change without notice.