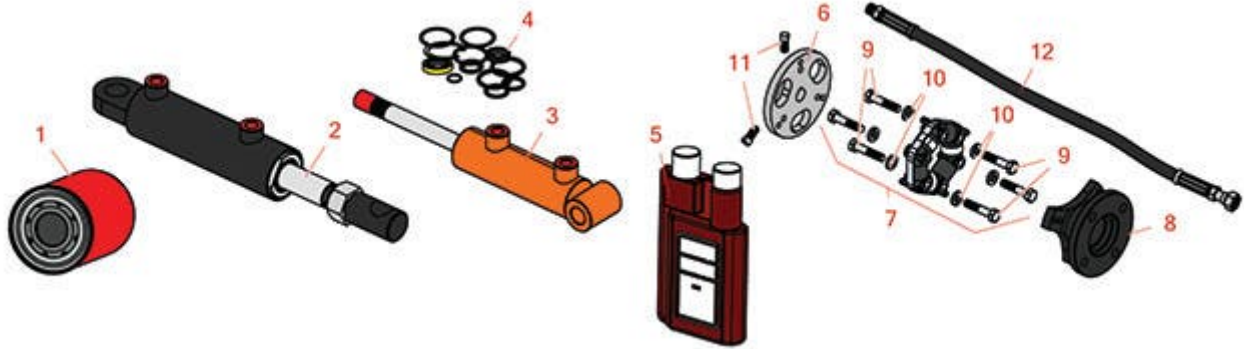




# Replaces Jacobsen Greens King IV Parts

*Traction Unit - Models 62302, 62303, 62305 & 62306*  
*Hydraulics*



All original equipment manufacturers names and part numbers are used for identification purposes only, and we are in no way implying that our products are original equipment parts. Prices subject to change without notice.



# Replaces Jacobsen Greens King IV Parts

Traction Unit - Models 62302, 62303, 62305 & 62306  
Hydraulics



Item No	R&R Part No.	OEM Part No.	Description	Qty Req	Order Quantity
1	<b>R558022</b>	558022	Baldwin Oil Filter - Hyd	1	
1	<b>RRF10612</b>	558022	SilverGuard Oil Filter	1	
1	<b>R353937</b>	353937, 551135	Filter - Cartridge Oil	1	
2	<b>R130210</b>	130210, 131434	Hydraulic Cylinder - Front	1	
3	<b>R131081</b>	131081, 131435	Hydraulic Cylinder - Rear	1	
4	<b>R500798</b>	500798	Seal Kit - Fits R130210 Cylinder	1	
4	<b>R502869</b>	501255, 502869	Seal Kit - Fits R131081 Cylinder	1	
4	<b>R4138591</b>	4138591	Seal Kit - Fits 4138520 Cylinder	1	
4	<b>R4137139</b>	4137139	Seal Kit - Fits 4138500 Cylinder	1	
5	<b>R525-16</b>		Hydraulic Oil Dye - 16 oz	0	
<i>Detail Description: Red dye provides leak detection and color coding for oils, synthetic oils, fats, waxes, resins and most solvents. Free from any insolubles. Concentrate. Use 1/2 oz. per 5 Gallons of oil. 16 oz bottle.:</i>					
6	<b>R241785</b>	241785	Coupling - Pump	1	
7	<b>R336550</b>	336550	Disc - Hyd Coupling	1	
8	<b>R220218</b>	220218	Extension - Flywheel Pto	1	
9	<b>R400192</b>	400192	Bolt - Hex HD 5/16-18 x 1-1/2	6	
10	<b>R446136</b>	446134, 446136	Washer - Lock 5/16 Zinc	6	
11	<b>R412015</b>	412015	Screw - Set 5/16-18 x 5/8SH	2	
12	<b>R130750</b>	130750	Hydraulic Hose Assy - Pump to Steel	1	

All original equipment manufacturers names and part numbers are used for identification purposes only, and we are in no way implying that our products are original equipment parts. Prices subject to change without notice.



## Replaces Jacobsen Greens King IV Parts

*Traction Unit - Models 62302, 62303, 62305 & 62306*  
*Hydraulics*



Item No	R&R Part No.	OEM Part No.	Description	Qty Req	Order Quantity
12	<b>R130751</b>	130751	Hydraulic Hose Assy - Pump to Tube	1	
12	<b>R131451</b>	131451	Hydraulic Hose Assy - Front Lift Cylinder	1	
12	<b>R131150</b>	131150	Hydraulic Hose Assy - Tube Rear Cylinder	1	
12	<b>R131151</b>	131151	Hose - Reel Motor Return	3	
12	<b>R131152</b>	131152	Hose - Reel Motor Pressure	3	
12	<b>R131802</b>	131802	Hydraulic Hose Assy - Pump to Tube	1	
12	<b>R131803</b>	131803	Hydraulic Hose Assy - Pump to Tube	2	
12	<b>R160041</b>	160041	Hydraulic Hose Assy - Front Lift Cylinder	1	
12	<b>R160042</b>	160042	Hydraulic Hose Assy - Rear Lift Cylinder	2	
12	<b>R1000223</b>	1000223	Hydraulic Hose Assy - Reel Motor Pressure	2	
12	<b>R1000224</b>	1000224	Hydraulic Hose Assy - Reel Motor Return	2	
12	<b>R131149</b>	131149	Hydraulic Hose Assy - Valve to Pump	1	
12	<b>R131804</b>	131804	Hydraulic Hose Assy - Trac Pump/Valve	1	
12	<b>R131153</b>	131153	Hydraulic Hose Assy - Trac Pump/Valve	1	
12	<b>R1001011</b>	1001011	Hydraulic Hose Assy - Center Motor Pressure	1	

All original equipment manufacturers names and part numbers are used for identification purposes only, and we are in no way implying that our products are original equipment parts. Prices subject to change without notice.