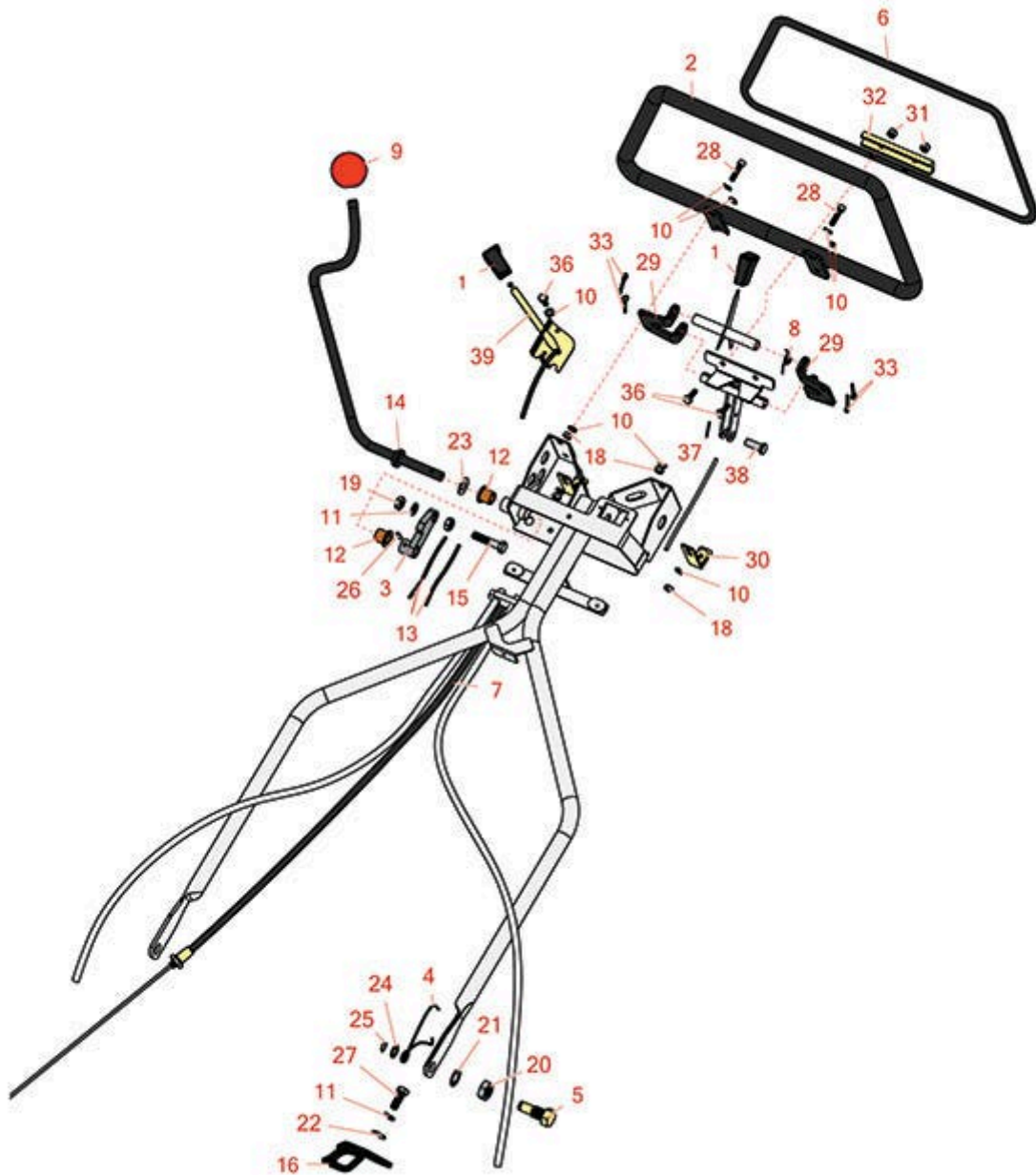




Replaces Jacobsen Greens King 526

Parts

Traction Unit
Handle



All original equipment manufacturers names and part numbers are used for identification purposes only, and we are in no way implying that our products are original equipment parts. Prices subject to change without notice.



Replaces Jacobsen Greens King 526

Parts

*Traction Unit
Handle*



| Item No | R&R Part No. | OEM Part No. | Description | Qty Req | Order Quantity |
|---------|-----------------|------------------------------|-------------------------------|---------|----------------|
| 1 | R366768 | 366768 | Knob - Black Rubber | 2 | |
| 2 | R1001250 | 1001250 | Handle Loop | 1 | |
| 3 | R2000067 | 2000067 | Lever - Brake Clutch | 1 | |
| 4 | R2809900 | 2809900 | Spring - LH Torsion | 1 | |
| 4 | R2809901 | 2809901 | Spring - RH Torsion | 1 | |
| 5 | R2811559 | 2811559 | Bolt - Handle Mounting | 2 | |
| 6 | R3002179 | 3002179 | Handle Loop | 1 | |
| 7 | R3002477 | 3002477 | Cable - Clutch | 1 | |
| 8 | R3002480 | 3002480 | Torsion Spring - Handle Latch | 1 | |
| 9 | R101551 | 3002001 | Knob - Threaded Brake Handle | 1 | |
| 10 | R3253-3 | 3253-3, 446128, 446130 | Washer - Lock 1/4 | 4 | |
| 11 | R3254-6 | 3254-6, 446140, 446142 | Washer - Lock 3/8 | 3 | |
| 12 | R366708 | 366708 | Bearing - Flanged | 2 | |
| 13 | R101563 | | Cable - Brake | 2 | |
| 13 | R366741 | 366741 | Cable - Brake | 2 | |
| 14 | R101550 | 1000634 | Handle - Brake - Threaded | 1 | |
| 15 | R400268 | 400268 | Bolt - Hex HD 3/8-16 x 1-3/4 | 1 | |
| 16 | R4115960 | 4115960 | Stop - LH Handle | 1 | |
| 16 | R4115961 | 4115961 | Stop - RH Handle | 1 | |

All original equipment manufacturers names and part numbers are used for identification purposes only, and we are in no way implying that our products are original equipment parts. Prices subject to change without notice.



Replaces Jacobsen Greens King 526

Parts

*Traction Unit
Handle*



| Item No | R&R Part No. | OEM Part No. | Description | Qty Req | Order Quantity |
|---------|-----------------|------------------------------|------------------------------|---------|----------------|
| 18 | R443102 | 443102 | Nut - 1/4-20 Yellow Zinc | 4 | |
| 19 | R443110 | 306562, 443110, 444762 | Nut - 3/8-16 Hex | 2 | |
| 20 | R443828 | 443828 | Nut - 5/8-18 Hex | 2 | |
| 21 | R447224 | 447224 | Washer - Lock 5/8 Int Star Z | 2 | |
| 22 | R453011 | 453011 | Washer - Flat 3/8 SAE Y/Zinc | 2 | |
| 23 | R454008 | 454008 | Spring Washer 1/2 x 3/4 | 1 | |
| 24 | R455012 | 455012 | Washer - Flat 1/2 x 3/4 | 2 | |
| 25 | R458006 | 458006 | Ring - Retaining | 2 | |
| 26 | R461181 | 461181 | Grooved Pin - 3/16 x 3/4 | 1 | |
| 27 | RF3205 | 400188, 400262 | Bolt - Hex HD 3/8-16 x 1 | 2 | |
| 28 | R316796 | 316796, 434029 | Bolt - Allen HD 1/4-20 x 1 | 2 | |
| 29 | R3002047 | 3002047 | Bracket | 2 | |
| 30 | R1001292 | 1001292 | Bracket - Handle Bar Cover | 2 | |
| 31 | R32152-4 | 32152-4, 444708 | Locknut - 1/4-20 All Metal | 2 | |
| 32 | R101553 | 3004259 | Channel - Loop | 1 | |
| 33 | R460026 | 460026 | Pin - Cotter 1/8 x 3/4 | 4 | |
| 36 | R321-4 | 321-4, 400108 | Bolt - Hex HD 1/4-20 x 3/4 | 2 | |
| 37 | R1023-4 | 460014 | Pin - Cotter 3/32 x 3/4 | 1 | |
| 38 | R461462 | 461462 | Clevis Pin - 3/8 x 1 3/32 | 1 | |

All original equipment manufacturers names and part numbers are used for identification purposes only, and we are in no way implying that our products are original equipment parts. Prices subject to change without notice.



Replaces Jacobsen Greens King 526

Parts

*Traction Unit
Handle*



| Item No | R&R Part No. | OEM Part No. | Description | Qty Req | Order Quantity |
|---------|----------------|--------------|------------------|---------|----------------|
| 39 | R366743 | 366743 | Throttle Control | 1 | |

All original equipment manufacturers names and part numbers are used for identification purposes only, and we are in no way implying that our products are original equipment parts. Prices subject to change without notice.