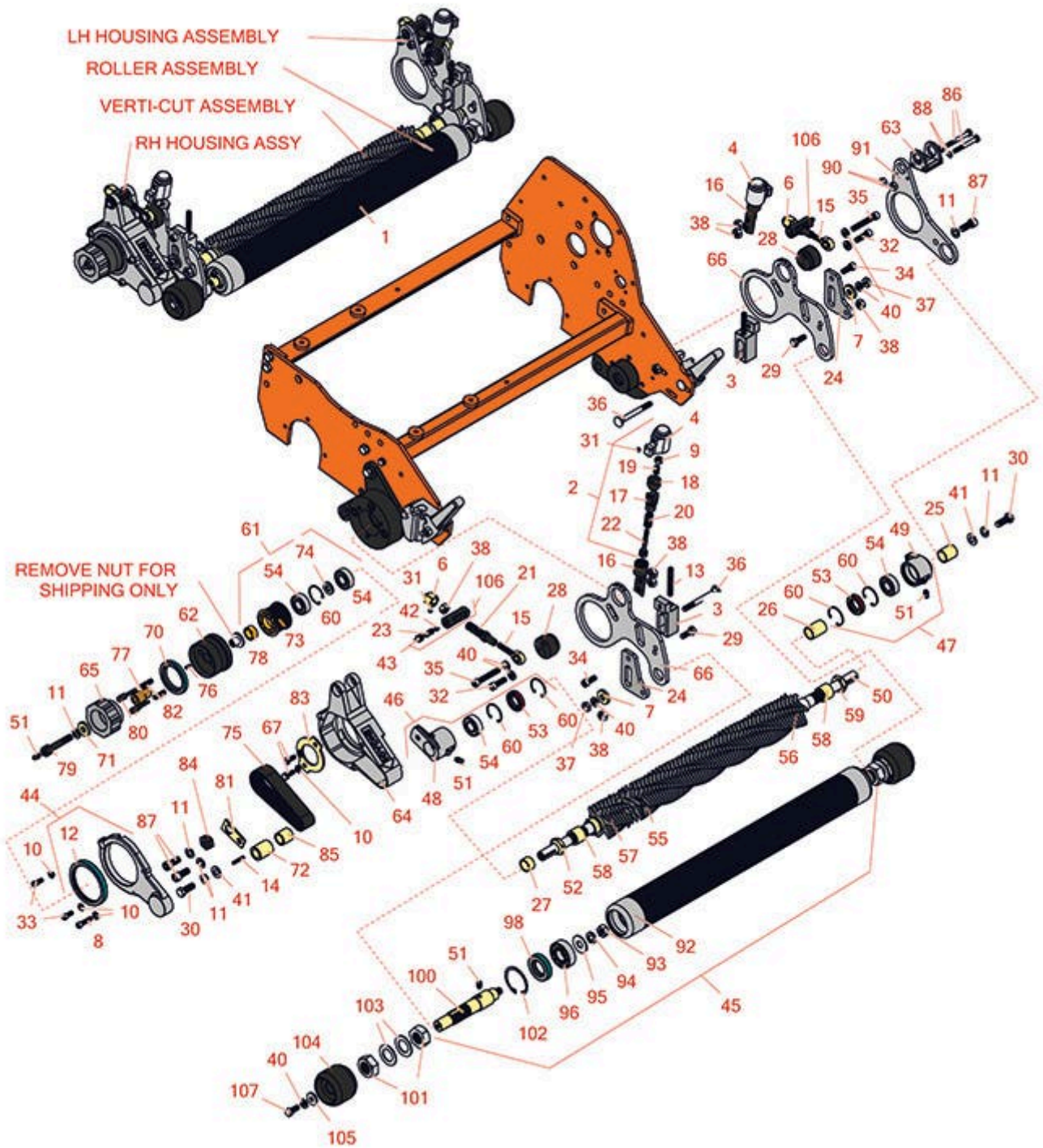




Replaces Jacobsen Greens King 422

Parts

Cutting Unit
Groomer



All original equipment manufacturers names and part numbers are used for identification purposes only, and we are in no way implying that our products are original equipment parts. Prices subject to change without notice.



Replaces Jacobsen Greens King 422

Parts

Cutting Unit
Groomer



| Item No | R&R Part No. | OEM Part No. | Description | Qty Req | Order Quantity |
|------------------------------|-----------------|------------------------------|---------------------------------|---------|----------------|
| Groomer Kits | | | | | |
| 1 | R101110 | 68624 | Groomer Assy - Fits 18 in Units | 0 | |
| 1 | R101111 | 68624 | Groomer Assy - Fits 22 in Units | 0 | |
| 1 | R101112 | 68624 | Groomer Assy - Fits 26 in Units | 0 | |
| Other Parts Available | | | | | |
| 2 | R163761 | 163761 | Knob - Quick Hgt Adj | 2 | |
| 3 | R164050 | 164050 | Adjusting Block Assy - R.H. | 1 | |
| 3 | R164051 | 164051 | Adjusting Block Assy - L.H. | 1 | |
| 4 | R271919 | 271919 | Knob - Fits Groomer | 2 | |
| 6 | R3005108 | 3005108 | Knob - Roller Adjusting | 2 | |
| 7 | R310103 | 310103 | Spacer | 2 | |
| 8 | R316796 | 316796, 434029 | Bolt - Allen HD 1/4-20 x 1 | 2 | |
| 9 | R32152-4 | 32152-4, 444708 | Locknut - 1/4-20 All Metal | 2 | |
| 10 | R3253-3 | 3253-3, 446128, 446130 | Washer - Lock 1/4 | 3 | |
| 11 | R3254-6 | 3254-6, 446140, 446142 | Washer - Lock 3/8 | 2 | |
| 12 | R338752 | 338752 | Seal | 1 | |
| 13 | R343616 | 343616, 443102 | Stud | 2 | |
| 14 | R345556 | 345556 | Key - Sq 1/8 x 1 | 1 | |

All original equipment manufacturers names and part numbers are used for identification purposes only, and we are in no way implying that our products are original equipment parts. Prices subject to change without notice.



Replaces Jacobsen Greens King 422

Parts

*Cutting Unit
Groomer*



| Item No | R&R Part No. | OEM Part No. | Description | Qty Req | Order Quantity |
|---------|----------------|-------------------|-----------------------------------|---------|----------------|
| 15 | R365247 | 365247 | Rod End | 2 | |
| 16 | R365265 | 365265 | Adj. Link - Fits Groomer | 2 | |
| 17 | R365266 | 365266 | Bolt - Groomer Adjusting | 2 | |
| 18 | R365267 | 365267 | Plunger - Fits Groomer | 2 | |
| 19 | R365268 | 365268 | Spring - Stainless - Knob Assy | 2 | |
| 20 | R365269 | 365269 | Spring - Stainless - Knob Assy | 2 | |
| 21 | R365270 | 365270 | Bolt - Groomer Adjusting | 2 | |
| 22 | R365271 | 365271 | Bolt | 2 | |
| 23 | R365291 | 365291 | Spring - Fits Groomer Pin Assy | 2 | |
| 24 | R366658 | 366658 | Link - Roller Adjusting | 2 | |
| 25 | R366660 | 366660 | Spacer - .875 x .630 x 1 | 1 | |
| 26 | R366661 | 366661 | Spacer - .875 x .630 x 1.25 | 2 | |
| 27 | R367165 | 367165 | Spacer - .875 OD x .630 ID x .532 | 1 | |
| 28 | R367166 | 367166 | Cam - Fits Groomer Adj Assy | 2 | |
| 29 | R400186 | 400186 | Bolt - Hex HD 5/16-18 x 7/8 | 2 | |
| 30 | R400298 | 400298 | Bolt - Hex HD 3/8-24 x 1 | 2 | |
| 31 | R422502 | 422502 | Set Screw - 1/4-20 x 1/4 Nyloc | 4 | |
| 32 | R434004 | 434003, 434004 | Screw - Soc HD 5/16-18 x 1 | 2 | |
| 33 | R434011 | 434011 | Bolt - Soc HD Cap 1/4-20 x 5/8 | 1 | |
| 34 | R434024 | 434024 | Bolt - Soc HD Cap 5/16-18 x 3/4 | 2 | |
| 35 | R434049 | 434049 | Bolt - Soc HD Cap 5/16-18 x 2 | 2 | |

All original equipment manufacturers names and part numbers are used for identification purposes only, and we are in no way implying that our products are original equipment parts. Prices subject to change without notice.



Replaces Jacobsen Greens King 422

Parts

Cutting Unit
Groomer



| Item No | R&R Part No. | OEM Part No. | Description | Qty Req | Order Quantity |
|---|-----------------|-------------------|---------------------------------|---------|----------------|
| 36 | R441687 | 441687 | Bolt - Carriage 5/16-18 x 3 | 1 | |
| 36 | R441688 | 441688 | Bolt - Carriage 5/16-18 x 3-1/2 | 1 | |
| 37 | R443106 | 443106 | Nut - 5/16-18 Y/Zinc Plated | 2 | |
| 38 | R444718 | 444718 | Nut - 5/16-18 Center Lock YZ | 6 | |
| 40 | R446136 | 446134, 446136 | Washer - Lock 5/16 Zinc | 6 | |
| 41 | R453011 | 453011 | Washer - Flat 3/8 SAE Y/Zinc | 2 | |
| 42 | R465006 | 465006 | Steel Ball - 5/16 | 2 | |
| 43 | R471219 | 366852, 471219 | Zerk - Grease | 2 | |
| 44 | R132214 | 132214 | Cover and Seal Assy | 1 | |
| 45 | R100115 | | Groomer Roller - 22 in | 1 | |
| <i>Tech Note: Note: 2 1/2 in Dia w/1/4 Spacing:</i> | | | | | |
| 45 | R100116 | | Groomer Roller - 18 in | 1 | |
| <i>Tech Note: Note: 2 1/2 in Dia w/1/4 Spacing:</i> | | | | | |
| 45 | R100117 | | Groomer Roller - 26 in | 1 | |
| <i>Tech Note: Note: 2 1/2 in Dia w/1/4 Spacing:</i> | | | | | |
| 46 | R132210 | 132210 | Bearing Housing Assy | 1 | |
| 47 | R132211 | 132211 | Bearing Housing Assy | 1 | |
| 48 | R241807 | 241807 | Bearing Housing | 1 | |
| 49 | R241808 | 241808 | Bearing Housing | 1 | |
| 50 | R3000782 | 3000782 | Shaft - Fits 18 Groomer | 1 | |
| 50 | R390857 | 390857 | Shaft - Fits 22 Groomer | 1 | |

All original equipment manufacturers names and part numbers are used for identification purposes only, and we are in no way implying that our products are original equipment parts. Prices subject to change without notice.



Replaces Jacobsen Greens King 422

Parts

Cutting Unit
Groomer



| Item No | R&R Part No. | OEM Part No. | Description | Qty Req | Order Quantity |
|---|-----------------|--|------------------------------|---------|----------------|
| 50 | R3000781 | 3000781 | Shaft - Fits 26 in Groomer | 1 | |
| 51 | R302-5 | 302-5, 471214, 471223, 471226 | Fitting - Grease | 3 | |
| 52 | R3296-15 | 3296-15, 367029, 444742 | Locknut - 3/4-16 Nylon Jam | 1 | |
| 53 | R336962 | 336962 | Seal | 2 | |
| 54 | R365229 | 365229 | Bearing | 2 | |
| 55 | R365230 | 365230 | Verti-Cut Blade - 2-1/2 Dia. | 0 | |
| <i>Tech Note: Blade Requirements: 71 blades for 22" groomers, 58 Blades for 18" groomers and 49 blades for 26" groomers :</i> | | | | | |
| 56 | R365234 | 365234 | Spacer - 1 1/16 x .467 | 48 | |
| 57 | R365236 | 365236 | Spacer - 1 1/16 x .247 | 59 | |
| <i>Tech Note: Fits 22":</i> | | | | | |
| 58 | R367161 | 367161 | Spacer - 1 OD x .75 | 2 | |
| 59 | R3220-7 | 443832 | Nut - 3/4-16 Jam Zinc | 1 | |
| 60 | R458461 | 458461 | Snap Ring | 4 | |
| 61 | R132212 | 132212 | Pulley Assy - Incl Bearing | 1 | |
| 62 | R163776 | 163776 | Pulley Assy - Incl Seal | 1 | |
| 63 | R2000088 | 2000088 | Pivot Block - Fits Groomer | 1 | |
| 64 | R220316 | 220316 | Belt Housing - Groomer | 1 | |
| 65 | R241817 | 241817 | Knob - Clutch | 1 | |
| 66 | R3002692 | 3002692 | Bracket - Roller Mounting | 2 | |

All original equipment manufacturers names and part numbers are used for identification purposes only, and we are in no way implying that our products are original equipment parts. Prices subject to change without notice.



Replaces Jacobsen Greens King 422

Parts

*Cutting Unit
Groomer*



| Item No | R&R Part No. | OEM Part No. | Description | Qty Req | Order Quantity |
|---------|----------------|------------------|------------------------------------|---------|----------------|
| 67 | R321-4 | 321-4, 400108 | Bolt - Hex HD 1/4-20 x 3/4 | 2 | |
| 70 | R338768 | 338768 | Seal - Oil | 1 | |
| 71 | R363841 | 363841 | Washer - Groomer Clutch | 1 | |
| 72 | R365227 | 365227 | Pulley - 16 Grooved | 1 | |
| 73 | R365228 | 365228 | Drive Pulley | 1 | |
| 74 | R365232 | 365232 | Spacer - Drive Pulley | 1 | |
| 75 | R365235 | 365235 | Belt - Timing Fits 2-1/2 Groomers | 1 | |
| 76 | R365239 | 365239 | Key - 1/8 x 1/8 x 7/16 | 1 | |
| 77 | R365254 | 365254 | Shaft - Stub - Clutch | 1 | |
| 78 | R365256 | 365256 | Spacer - Pulley .875 x .630 x .406 | 1 | |
| 79 | R365257 | 365257 | Bolt - Special Groomer Clutch | 1 | |
| 80 | R365258 | 365258 | Pin - Clutch | 2 | |
| 81 | R365260 | 365260 | Link - Belt Adjusting | 1 | |
| 82 | R365272 | 365272 | Spring - Clutch | 2 | |
| 83 | R366659 | 366659 | Clamp - Groomer | 1 | |
| 84 | R367162 | 367162 | Belt Tensioner - Eccentric | 1 | |
| 85 | R367163 | 367163 | Spacer - .875 x .630 x .880 | 1 | |
| 86 | R400120 | 400120 | Bolt - Hex HD 1/4-20 x 2 | 2 | |
| 87 | R434030 | 434030 | Bolt - Soc HD Cap 3/8-16 x 7/8 | 3 | |
| 88 | R447212 | 447212 | Lockwasher - 1/4 Internal Tooth | 2 | |
| 90 | RP570-3 | 443802 | Nut - 1/4-20 Hex Jam Zinc | 2 | |

All original equipment manufacturers names and part numbers are used for identification purposes only, and we are in no way implying that our products are original equipment parts. Prices subject to change without notice.



Replaces Jacobsen Greens King 422

Parts

Cutting Unit
Groomer



| Item No | R&R Part No. | OEM Part No. | Description | Qty Req | Order Quantity |
|---|-----------------|-------------------|---|---------|----------------|
| 91 | R340464 | 340464 | Bracket - Fits Groomer Mounting | 1 | |
| 92 | R390899 | 390899 | Roller Tube - Grooved 2.5 x 22 - 1/4 in Spacing | 1 | |
| <i>Tech Note: Note: W/ 1/4 Spacing:</i> | | | | | |
| 92 | R3000784 | 3000784 | Roller Tube - Grooved 2.5 x 18 | 1 | |
| <i>Tech Note: Note: W/ 1/4 Spacing:</i> | | | | | |
| 92 | R3000783 | 3000783 | Roller Tube - Grooved 2.5 x 26 | 1 | |
| <i>Tech Note: Note: W/ 1/4 Spacing:</i> | | | | | |
| 93 | R443816 | 443816 | Nut - 7/16-20 Hex Jam | 2 | |
| 94 | R446146 | 446146, 446148 | Lock Washer - 7/16 | 2 | |
| 95 | R453013 | 452008, 453013 | Washer - Flat 7/16 | 2 | |
| 96 | R365330 | 365330 | Bearing | 2 | |
| 98 | R338773 | 338773 | Seal | 2 | |
| 100 | R338772 | 338772 | Shaft - Roller - RH | 1 | |
| 100 | R340465 | 340465 | Shaft - Roller - LH | 1 | |
| 101 | R264 | 443836 | Nut - Jam Hardened 7/8-14 | 4 | |
| 102 | R458113 | 458113 | Ring - Snap Fits Groomer | 2 | |
| 103 | R365409 | 365409 | Spacer - Wheel | 4 | |
| 104 | R365343 | 365343 | Wheel - Anti Scalp | 2 | |
| 105 | R364441 | 364441, 366641 | Washer - Flat 5/16x7/8 | 2 | |

All original equipment manufacturers names and part numbers are used for identification purposes only, and we are in no way implying that our products are original equipment parts. Prices subject to change without notice.



Replaces Jacobsen Greens King 422

Parts

*Cutting Unit
Groomer*



| Item No | R&R Part No. | OEM Part No. | Description | Qty Req | Order Quantity |
|---------|-----------------|---------------------|---------------------------|---------|----------------|
| 106 | R3003401 | 3003401, 3003969 | Pin - Fits Groomer | 2 | |
| 107 | R400184 | 400184, 400194 | Screw - 5/16-18 x 3/4 Hex | 2 | |

All original equipment manufacturers names and part numbers are used for identification purposes only, and we are in no way implying that our products are original equipment parts. Prices subject to change without notice.