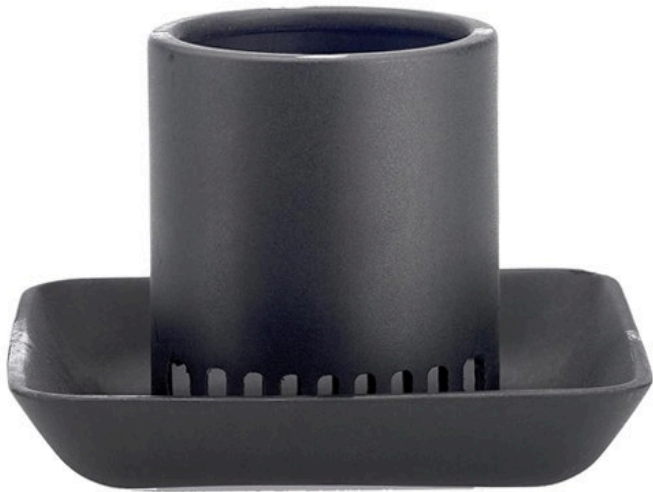




# Underhill Gulp Pro Mudguard - For Pumps Post 2020 RG7119



## Details

The MudGuard slides on the end of a Gulp Pro with 36" or 72" hose to prevent the pump from clogging in muddy conditions. This easy to attach and remove guard features a built-in filter to minimize mud and debris from burring into the pump.

- Fits Gulp Pro Water Removal Suction Pumps
- Built-in Filter Minimizes Clogging and Makes Pumping Easier
- A "Must Have" Accessory for Dirty Water Use
- Omni-Directional
- Easy On and Off for Cleaning Out Debris

## Specifications

Manufacturer	Underhill
Color	Black

## O.J. Company

294 Rang St-Paul Sherrington, J0L 2N0  
450-247-2758

<https://ojcompagnie.rrproducts.com/>