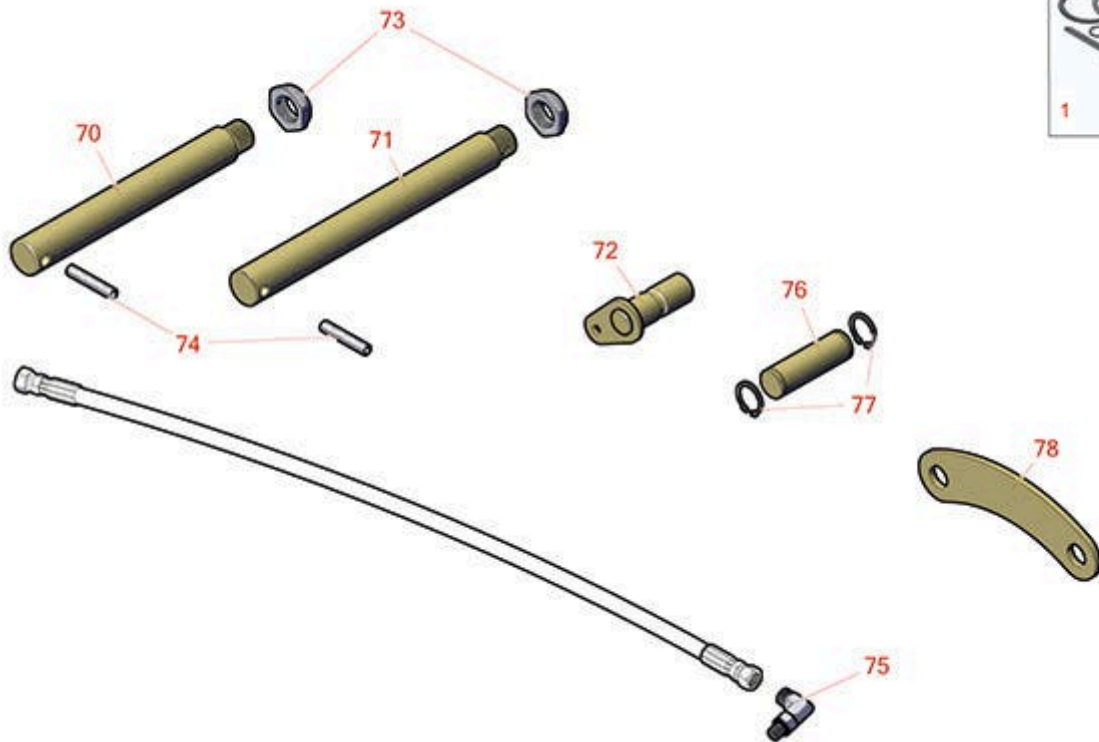




Replaces Toro Reelmaster 6700D Parts

Traction Unit - Models 03808 & 03813

Lift Arm



All original equipment manufacturers names and part numbers are used for identification purposes only, and we are in no way implying that our products are original equipment parts. Prices subject to change without notice.



Replaces Toro Reelmaster 6700D Parts

Traction Unit - Models 03808 & 03813

Lift Arm



Item No	R&R Part No.	OEM Part No.	Description	Qty Req	Order Quantity
---------	--------------	--------------	-------------	---------	----------------

Overhaul Kits

1	R107-2564	107-2564	Seal Kit - Fits 107-1981 Hyd Cyl	1	
---	------------------	----------	----------------------------------	---	--

Tech Note: Used on Hydraulic Cylinder No. 108-4440:

Other Parts Available

70	R98-8826	98-8826	Pin-Pivot	2	
----	-----------------	---------	-----------	---	--

Tech Note: Used on Rear No. 6 and No. 7 Lift Arm Assembly:

71	R95-7158	95-7158	Pin - Pivot	2	
----	-----------------	---------	-------------	---	--

Tech Note: Used on Front and Rear Lift Arms Assembly:

72	R105-9889	105-9889, 125-1906	Cylinder Pin Assy	2	
----	------------------	-----------------------	-------------------	---	--

73	R3296-49	3296-49	Locknut - 1 in 14	4	
----	-----------------	---------	-------------------	---	--

74	R32121-110	32121-110	Roll Pin - Slotted	4	
----	-------------------	-----------	--------------------	---	--

75	R340-132	340-132	Hydraulic Fitting - 90 Deg	5	
----	-----------------	---------	----------------------------	---	--

76	R92-7548	92-7548	Pin - Cylinder	2	
----	-----------------	---------	----------------	---	--

77	R458039	32151-36	Ring - Retaining	12	
----	----------------	----------	------------------	----	--

78	R98-8821	98-8821	Link - Rear	1	
----	-----------------	---------	-------------	---	--

79	R94-1444	94-1444	Union-Bulkhead	4	
----	-----------------	---------	----------------	---	--

80	R340-78	340-78	Nut - Lock Bulkhead	4	
----	----------------	--------	---------------------	---	--

81	R237-22	107-8844, 237-22, 237-78	O-Ring	7	
----	----------------	--------------------------------	--------	---	--

82	R340-103	340-103, 340-137	Hydraulic Fitting - 45 Deg	1	
----	-----------------	---------------------	----------------------------	---	--

All original equipment manufacturers names and part numbers are used for identification purposes only, and we are in no way implying that our products are original equipment parts. Prices subject to change without notice.



Replaces Toro Reelmaster 6700D Parts

Traction Unit - Models 03808 & 03813

Lift Arm



Item No	R&R Part No.	OEM Part No.	Description	Qty Req	Order Quantity
83	R237-21	237-21, 327-21	O-Ring	7	
84	R10-8110	10-8110	Washer - Pivot Pin	8	
85	R93-2704-03	93-2704-03	Link - Left	4	
86	R340-92	340-92	Hydraulic Fitting - Striaght	2	

All original equipment manufacturers names and part numbers are used for identification purposes only, and we are in no way implying that our products are original equipment parts. Prices subject to change without notice.