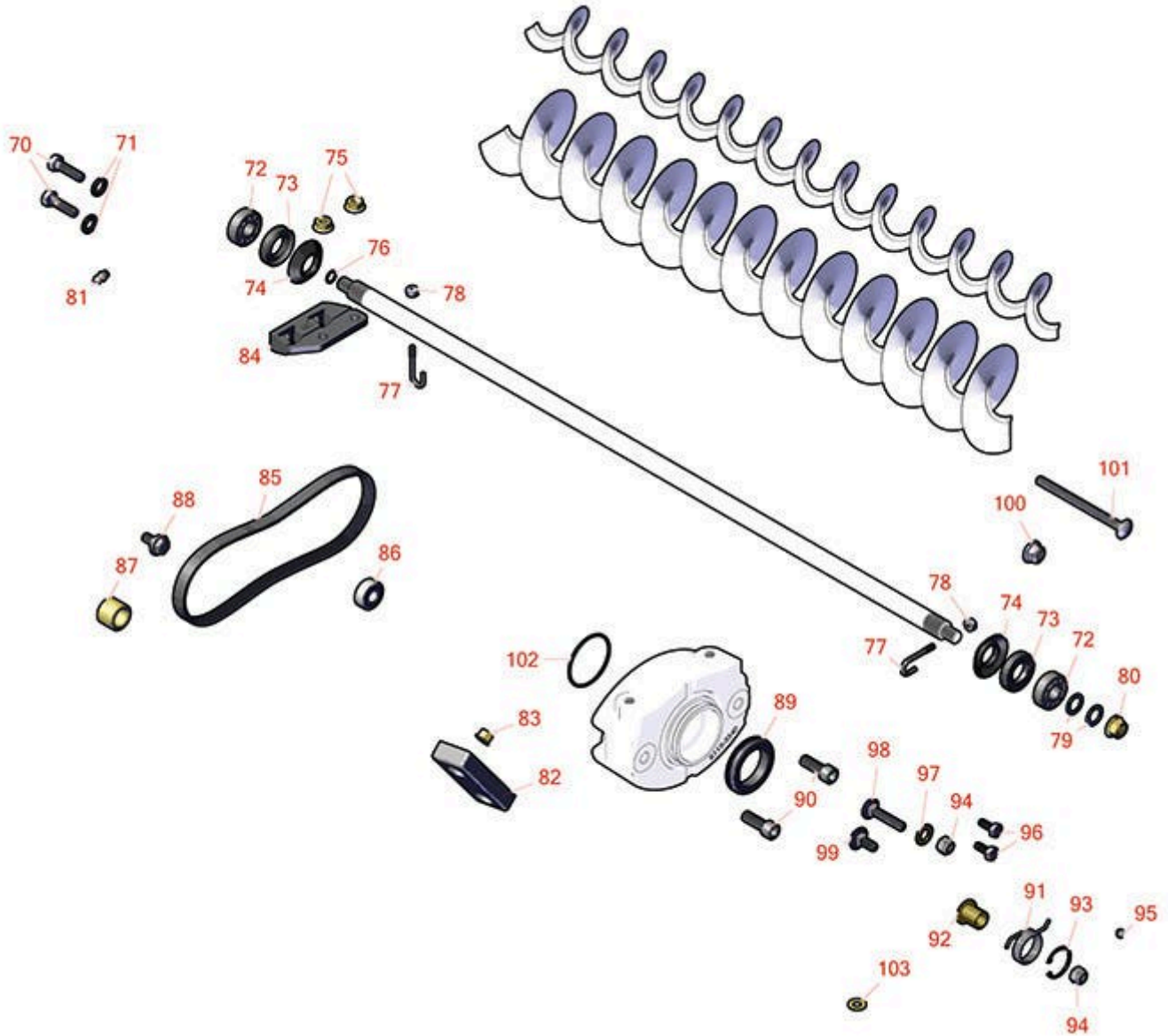




Replaces Toro Reelmaster 3550-D Parts

18in Cutting Unit - Model 03480, 03481, 03485, 03486,
03911 & 03912

Rear Roller Brush Kit



All original equipment manufacturers names and part numbers are used for identification purposes only, and we are in no way implying that our products are original equipment parts. Prices subject to change without notice.



Replaces Toro Reelmaster 3550-D Parts

18in Cutting Unit - Model 03480, 03481, 03485, 03486,
03911 & 03912

Rear Roller Brush Kit



Item No	R&R Part No.	OEM Part No.	Description	Qty Req	Order Quantity
70	R322-16	322-16, Apr-00	Bolt - Hex HD 5/16-18 x 1-1/8	10	
71	R94-6936	94-6936, 94-9236	Washer - Hardened - 5/16 SAE	20	
72	R95-0707	95-0707	Bearing - Self Aligning	1	
73	R106-8530	106-8530	Seal - Oil	2	
74	R108-4172	108-4172	Seal - Excluder	10	
75	R104-8300	104-8300, 104-8300 , 119-4041	Locknut - 5/16-18 Flanged Y/Zinc	20	
76	R237-22	107-8844, 237-22, 237-78	O-Ring	5	
77	R105-9632	105-9632	Bolt - J	2	
78	R3296-2	32127-10, 3296-2, 9157404	Nut - #10 Lock	2	
79	R112-6957	112-6957	Washer - Hardened	10	
80	R32128-19	104-8301, 104-9301, 32128-19	Locknut - 3/8-16 Flanged Top Lock	5	

All original equipment manufacturers names and part numbers are used for identification purposes only, and we are in no way implying that our products are original equipment parts. Prices subject to change without notice.



Replaces Toro Reelmaster 3550-D Parts

18in Cutting Unit - Model 03480, 03481, 03485, 03486,
03911 & 03912

Rear Roller Brush Kit



Item No	R&R Part No.	OEM Part No.	Description	Qty Req	Order Quantity
81	R302-5	21-6010, 302-11, 302-37, 302-47, 302-5, 302-57, 302-58, 302-6, 31-0300, 32-9660, 60-0800, 62-3880, 92-4181	Fitting - Grease	1	
82	R86-5350	86-5350	Bumper - Rubber	2	
83	R104-7201	104-7201	Locknut - 1/4-20 ESNA Flanged	6	
84	R108-4480	108-4480	Bracket - Rear Roller Brush	5	
85	R115-0894	115-0894	Belt-Brush 5 Inch	5	
86	R110-1701	110-1701	Bearing	1	
87	R108-4477	108-4477	Spacer	5	
88	R27-0411	27-0411	Bolt - Shoulder	5	
89	R240-7	240-7	Grommet - Rubber - 2 in OD	5	
90	R3274-7	3247-7, 3274-7	Bolt - Soc HD Cap 3/8-16 x 1	10	
91	R115-0839	115-0839	Spring - Idler - SS	5	
92	R256-155	256-155, 265-155	Bushing - Flanged	1	
93	R32151-60	32151-60	Ring - Snap	1	
94	R3296-47	3296-47	Locknut - 5/16-18 Jam Nyloc	30	
95	R150690	108-0989	Screw - Set 1/4-20 x 1/4	5	

All original equipment manufacturers names and part numbers are used for identification purposes only, and we are in no way implying that our products are original equipment parts. Prices subject to change without notice.



Replaces Toro Reelmaster 3550-D Parts

18in Cutting Unit - Model 03480, 03481, 03485, 03486,
03911 & 03912

Rear Roller Brush Kit



Item No	R&R Part No.	OEM Part No.	Description	Qty Req	Order Quantity
96	R400106	321-3, 513315, 908002P	Bolt - Hex HD 1/4-20 x 5/8	10	
97	R3256-45	3256-45	Washer - Flat .733 x .381 x .058 YZ	20	
98	R112-6950	112-6950, 3230-27	Bolt - Carriage 5/16-18 x 1-1/2	20	
99	R3230-23	3230-23, Mar-61	Bolt - 5/16-18x3/4 - Carriage	5	
100	R104-8301	104-8301, 104-9301, 109-6658, 133-7570	Locknut - 3/8-16 Nylon Flanged	5	
101	R106-9758		Bolt - Carriage 5/16x4	10	
101	RP17609-2	106-9758, 3230-7	Bolt - Carriage 5/16-18 x 1-1/2	10	
101	R3230-7	25-33-AGD, 3230-9	Bolt - Carriage 5/16-18 x 2 1/2	10	
102	R112-6968	112-6968	O-Ring	5	
103	R3256-22	24-9-BD, 3-1032, 3256-1, 3256-22, 93-0954, 93-0989	Washer - Flat 1/4 Yellow	4	
103	R33094-00	33094-00, 93-5914	Washer - Flat - 8mm Hardened	4	
103	R453023	3256-1, 3256-22, 3256-72, 33094-00	Washer - Flat 1/4	4	

All original equipment manufacturers names and part numbers are used for identification purposes only, and we are in no way implying that our products are original equipment parts. Prices subject to change without notice.



Replaces Toro Reelmaster 3550-D Parts

18in Cutting Unit - Model 03480, 03481, 03485, 03486,
03911 & 03912

Rear Roller Brush Kit



Item No	R&R Part No.	OEM Part No.	Description	Qty Req	Order Quantity
103	R3253-3	01-166-0070, 01-166-0410, 23-9-GD, 24-7150, 3253-3, 3256-1, 352-167	Washer - Lock 1/4	4	

All original equipment manufacturers names and part numbers are used for identification purposes only, and we are in no way implying that our products are original equipment parts. Prices subject to change without notice.