

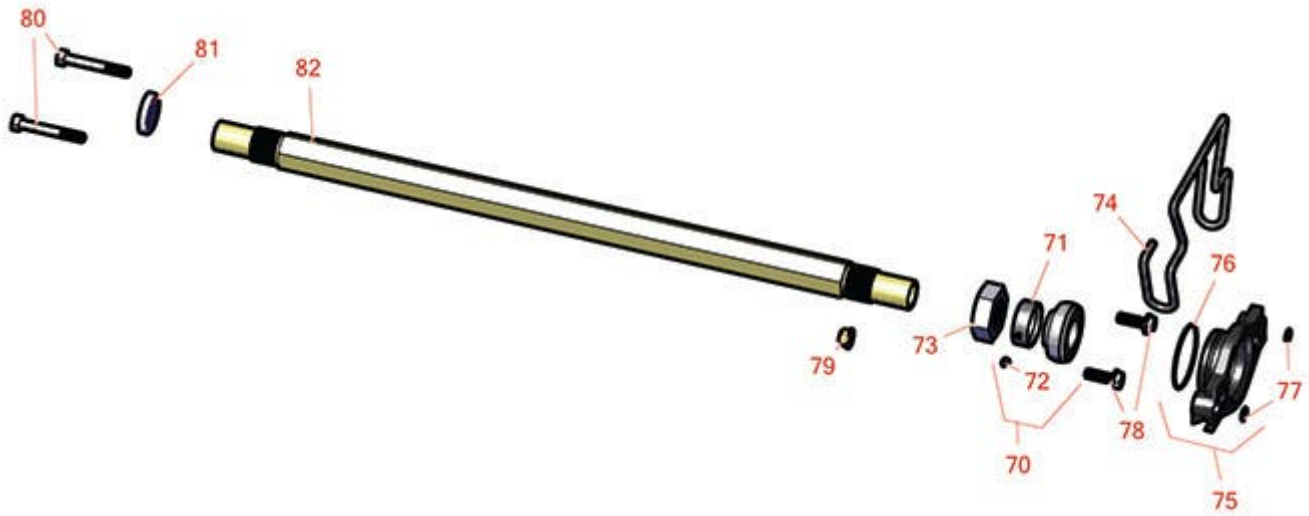


# Replaces Toro Greensmaster eTriFlex

## 3370 Parts

Tri-Roller Unit - Model 04722

Roller & Frame



All original equipment manufacturers names and part numbers are used for identification purposes only, and we are in no way implying that our products are original equipment parts. Prices subject to change without notice.



# Replaces Toro Greensmaster eTriFlex 3370 Parts

Tri-Roller Unit - Model 04722  
Roller & Frame



| Item No | R&R Part No. | OEM Part No. | Description | Qty Req | Order Quantity |
|---------|--------------|--------------|-------------|---------|----------------|
|---------|--------------|--------------|-------------|---------|----------------|

## Other Parts Available

|    |                  |                                                                                 |                                  |   |  |
|----|------------------|---------------------------------------------------------------------------------|----------------------------------|---|--|
| 70 | <b>R71-1360</b>  | 251-219,<br>251-253,<br>251-254,<br>251-320,<br>71-1360,<br>88-7880,<br>94-3405 | Bearing                          | 2 |  |
| 70 | <b>R54-9180</b>  | 54-9180,<br>99-6570                                                             | Kit - U-Joint                    | 2 |  |
| 71 | <b>R251-77</b>   | 251-77                                                                          | Collar - Bearing                 | 2 |  |
| 72 | <b>R3245-35</b>  | 3245-35                                                                         | Screw - Set 1/4-28 x 1/4         | 2 |  |
| 73 | <b>R3220-18</b>  | 3220-18,<br>67-5840                                                             | Nut - Jam V-Cut Shaft            | 2 |  |
| 74 | <b>R117-6706</b> | 117-6706                                                                        | Clamp - Motor                    | 1 |  |
| 75 | <b>R115-5227</b> | 115-5227                                                                        | Motor Adapter Assy               | 1 |  |
| 76 | <b>R360-0398</b> | 360-0398                                                                        | O-Ring                           | 2 |  |
| 77 | <b>R237-22</b>   | 107-8844,<br>237-22,<br>237-78                                                  | O-Ring                           | 1 |  |
| 78 | <b>R3234-29</b>  | 3234-17,<br>3234-29                                                             | Bolt - 5/16-18x1 Serr Hex        | 2 |  |
| 79 | <b>R104-8300</b> | 104-8300,<br>104-8300 ,<br>119-4041                                             | Locknut - 5/16-18 Flanged Y/Zinc | 4 |  |
| 80 | <b>R322-11</b>   | 01-150-0390,<br>01-178-0518,<br>20-31-AD,<br>322-11,<br>3223-7                  | Bolt - 5/16-18 x 2 1/4 Hx HD     | 2 |  |
| 81 | <b>R105-5708</b> | 105-5708,<br>121-4609                                                           | Plug - Expansion                 | 1 |  |

All original equipment manufacturers names and part numbers are used for identification purposes only, and we are in no way implying that our products are original equipment parts. Prices subject to change without notice.



# Replaces Toro Greensmaster eTriFlex

## 3370 Parts

*Tri-Roller Unit - Model 04722*

*Roller & Frame*



| Item No | R&R Part No.    | OEM Part No. | Description    | Qty Req | Order Quantity |
|---------|-----------------|--------------|----------------|---------|----------------|
| 82      | <b>R99-1611</b> | 99-1611      | Shaft - Spiker | 1       |                |

All original equipment manufacturers names and part numbers are used for identification purposes only, and we are in no way implying that our products are original equipment parts. Prices subject to change without notice.