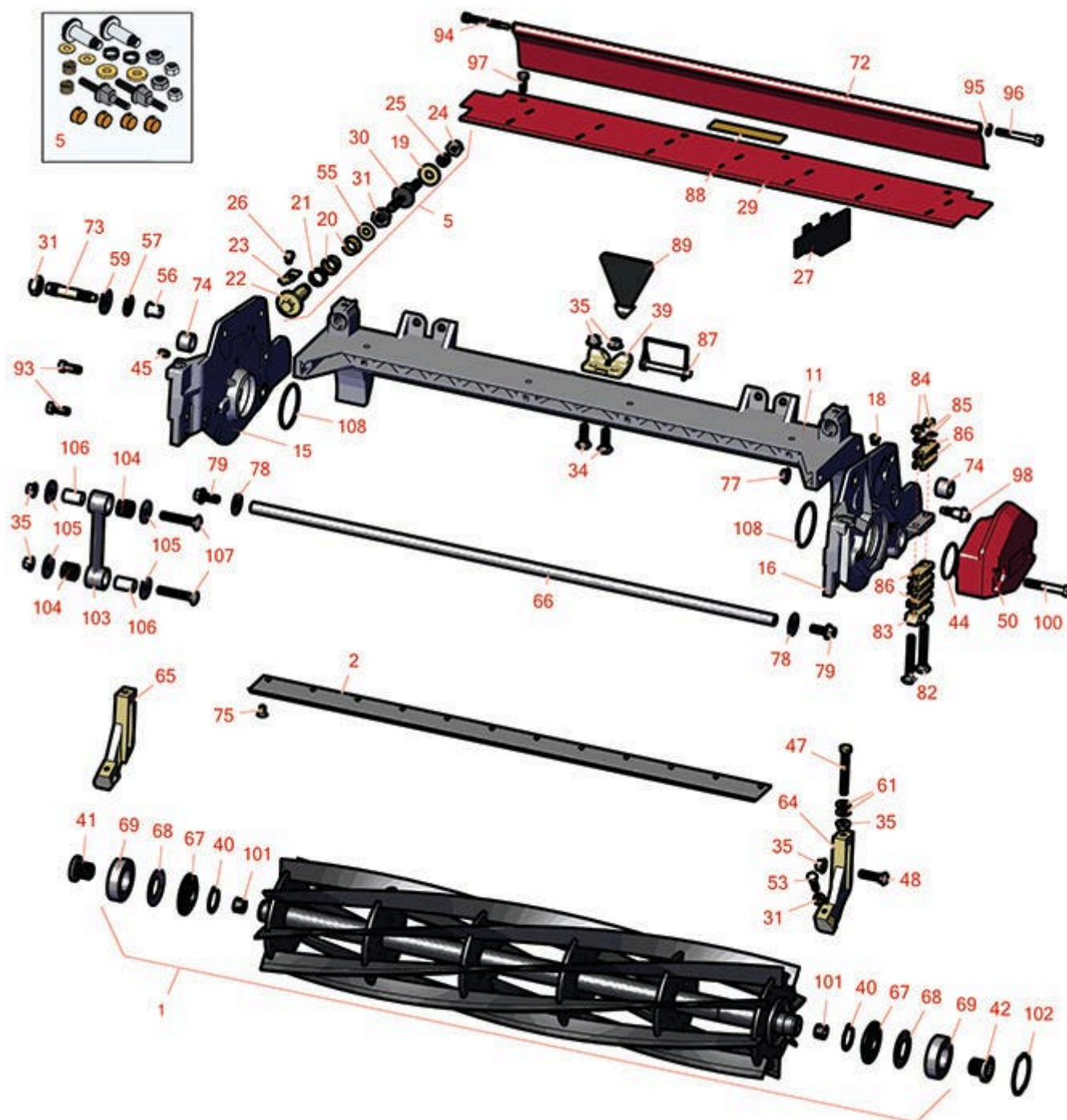




## Replaces Toro Reelmaster 3105-D Parts

32in DPA Cutting Unit - Models 03191

Reel & Bedknife



All original equipment manufacturers names and part numbers are used for identification purposes only, and we are in no way implying that our products are original equipment parts. Prices subject to change without notice.



## Replaces Toro Reelmaster 3105-D Parts

32in DPA Cutting Unit - Models 03191  
Reel & Bedknife



Item No	R&R Part No.	OEM Part No.	Description	Qty Req	Order Quantity
---------	--------------	--------------	-------------	---------	----------------

### R&R Reels, Lifetime Guaranteed

1	<b>R137-8483</b>	137-8483	Reel - 8 Blade Razor Series Radial (RR) w/Bearings and Seals 32x7	1	
---	------------------	----------	---	---	--

*Detail Description: R&R Reel blades are expertly crafted from premium high carbon-boron alloy steel, heat-treated to perfectly complement both R&R and OEM bedknives. Each reel undergoes precision cylindrical grinding on bearing surfaces, followed by relief grinding for optimal performance. Advanced computer balancing ensures extended reel and bearing life. Backed by our lifetime guarantee against defects in materials and craftsmanship under normal use, R&R Reels deliver unmatched durability and cutting precision you can trust.:*

1	<b>R137-8482</b>	137-8482	Reel - 5 Blade Razor Series Radial (RR) w/Bearings and Seals 32x7	1	
---	------------------	----------	---	---	--

*Detail Description: R&R Reel blades are expertly crafted from premium high carbon-boron alloy steel, heat-treated to perfectly complement both R&R and OEM bedknives. Each reel undergoes precision cylindrical grinding on bearing surfaces, followed by relief grinding for optimal performance. Advanced computer balancing ensures extended reel and bearing life. Backed by our lifetime guarantee against defects in materials and craftsmanship under normal use, R&R Reels deliver unmatched durability and cutting precision you can trust.:*

### R&R Bedknives, Lifetime Guaranteed

2	<b>R114-9391</b>	114-9391	Bedknife - 32 in Unit - Heavy Duty	1	
---	------------------	----------	------------------------------------	---	--

*Detail Description: R&R Bedknives are manufactured from high carbon-boron alloy steel and then hardened to RC46-49 to match the temper of our reel blades and original equipment reels. Bedknives are surface ground on the top and front edge and straightened three times before being packaged with oil for rust prevention. All R&R Bedknives now have an increased front edge grind for added life. All R&R Bedknives are guaranteed against defects in material and workmanship under normal use for the life of the part.:*

2	<b>R114-9389</b>	114-9389	Bedknife - 32 in Unit - Standard	1	
---	------------------	----------	----------------------------------	---	--

*Detail Description: R&R Bedknives are manufactured from high carbon-boron alloy steel and then hardened to RC46-49 to match the temper of our reel blades and original equipment reels. Bedknives are surface ground on the top and front edge and straightened three times before being packaged with oil for rust prevention. All R&R Bedknives now have an increased front edge grind for added life. All R&R Bedknives are guaranteed against defects in material and workmanship under normal use for the life of the part.:*

### R&R Razor Tool Steel Bedknives, Lifetime Guaranteed

2	<b>R112-8956</b>	112-8956	Bedknife - Razor Tool Steel - 32 x 3/8 Fairway	1	
---	------------------	----------	--	---	--

All original equipment manufacturers names and part numbers are used for identification purposes only, and we are in no way implying that our products are original equipment parts. Prices subject to change without notice.



# Replaces Toro Reelmaster 3105-D Parts

32in DPA Cutting Unit - Models 03191  
Reel & Bedknife



Item No	R&R Part No.	OEM Part No.	Description	Qty Req	Order Quantity
---------	--------------	--------------	-------------	---------	----------------

*Detail Description: R&R Razor bedknives are manufactured from premium alloy tool steel steel and then hardened to RC48-51 to match the temper of our Razor reel blades and original equipment premium series reels. Bedknives are surface ground on the top and front edge and specially packaged for rust prevention. All R&R Bedknives now have an increased front edge grind for added life. All R&R Bedknives are guaranteed against defects in material and workmanship under normal use for the life of the part. You can expect up to double the life over standard bedknives.:*

## Overhaul Kits

5	<b>R120-7230</b>	120-7230	Overhaul Kit - Fits DPA Units	1
---	------------------	----------	-------------------------------	---

*Detail Description: Incl 2 ea.: R108-0015, R115-7039, R119-4155, R120-5116, R120-5118, R120-5120, R3296-33, R3296-48 & 4 ea: R106-5344:*

## Other Parts Available

11	<b>R112-8978</b>	112-8978	Frame - Center 32 in Unit	1
----	------------------	----------	---------------------------	---

15	<b>R137-5979</b>	137-5979	Side Plate Assy - 7 in RH Aluminum	1
----	------------------	----------	------------------------------------	---

16	<b>R137-5976</b>	137-5976	Side Plate Assy - 7 in LH Aluminum	1
----	------------------	----------	------------------------------------	---

18	<b>R170714</b>	302-34, 302-39, 62-3520	Fitting - Pressure Relief	2
----	----------------	-------------------------------	---------------------------	---

19	<b>R119-4155</b>	119-4155	Washer - Hardened	2
----	------------------	----------	-------------------	---

20	<b>R106-5344</b>	106-5344	Bushing - Flanged and Keyed	4
----	------------------	----------	-----------------------------	---

21	<b>R120-5116</b>	120-5116	Washer - Wave	2
----	------------------	----------	---------------	---

22	<b>R120-5118</b>	120-5118	Shaft - Adjuster	2
----	------------------	----------	------------------	---

*Detail Description: 2012 & Newer:*

23	<b>R99-2097</b>	99-2097	Detent - Bed Bar Adjuster	2
----	-----------------	---------	---------------------------	---

24	<b>R3296-48</b>	119-4039, 32146-7, 3296-34, 3296-48	Locknut - 7/16-14 ESNA	2
----	-----------------	--	------------------------	---

All original equipment manufacturers names and part numbers are used for identification purposes only, and we are in no way implying that our products are original equipment parts. Prices subject to change without notice.



## Replaces Toro Reelmaster 3105-D Parts

32in DPA Cutting Unit - Models 03191

Reel & Bedknife



Item No	R&R Part No.	OEM Part No.	Description	Qty Req	Order Quantity
25	<b>R120-5120</b>	120-5120	Spring - Compression	2	
26	<b>R114-9396</b>	114-9396, 119-4067	Bolt - Hex HD 5/16-18 x 3/8	2	
27	<b>R110-1706</b>	110-1706	Deflector	7	
29	<b>R112-8983</b>	112-8983	Front Grass Shield Assy - 32 in Units	1	
30	<b>R115-7039</b>	115-7039	Screw - Adjuster - Bedbar	2	
31	<b>R3296-33</b>	3296-33	Locknut - 5/8-18 ESNA Jam	4	
34	<b>R3231-25</b>	01-173-0610, 30-9970, 3231-25, 3231-3, 900064P	Bolt - Carriage 3/8-16 x 1-1/4	2	
35	<b>R104-8301</b>	104-8301, 104-9301, 109-6658, 133-7570	Locknut - 3/8-16 Nylon Flanged	12	
39	<b>R110-4058</b>	110-4058	Bracket - Chain	1	
40	<b>R92-2601</b>	92-2601	Snap Ring	2	
41	<b>R127-7109</b>	127-7109	Insert-Threaded - 7 in Reel (RH)	1	
42	<b>R127-7111</b>	127-7111	Insert-Threaded - 7 in Reel (LH)	1	
44	<b>R112-6967</b>	112-6967	O-Ring	1	

All original equipment manufacturers names and part numbers are used for identification purposes only, and we are in no way implying that our products are original equipment parts. Prices subject to change without notice.



## Replaces Toro Reelmaster 3105-D Parts

32in DPA Cutting Unit - Models 03191

Reel & Bedknife



Item No	R&R Part No.	OEM Part No.	Description	Qty Req	Order Quantity
45	R302-5	21-6010, 302-11, 302-37, 302-47, 302-5, 302-57, 302-58, 302-6, 31-0300, 32-9660, 60-0800, 62-3880, 92-4181	Fitting - Grease	2	
47	R112-7451	100-9429, 112-7451	Bolt - Hex Tap 3/8-16 x 2-3/4	2	
48	R3231-4	01-157-0440, 01-173-0612, 3231-4	Bolt - Carriage 3/8-16 x 1-1/2	2	
50	R119-0614-01	119-0614-01	Weight	1	
53	R322-16	322-16, Apr-00	Bolt - Hex HD 5/16-18 x 1-1/8	2	
55	R108-0015	108-0015	Washer - Flat	2	
56	R56-9520	56-9520	Bushing - Nyliner	2	
57	R61-1950	61-1950	Washer - Nylon - Bed Bar	2	
59	R3256-26	01-166-0540, 01-166-0820, 17-2530, 24-13-BD, 30-8570, 3256-26, 356206, 48-9390	Washer - 1/2 in	2	
59	R87-7270-01	87-7270	Washer - Flat 1/2	2	

All original equipment manufacturers names and part numbers are used for identification purposes only, and we are in no way implying that our products are original equipment parts. Prices subject to change without notice.



## Replaces Toro Reelmaster 3105-D Parts

32in DPA Cutting Unit - Models 03191

Reel & Bedknife



Item No	R&R Part No.	OEM Part No.	Description	Qty Req	Order Quantity
59	R453017	01-166-0050, 01-166-0240, 01-166-0800, 24-13-AD, 24-14-AD, 32-8110, 3256-26, 3256-6, 453017, 69-8980, 87-7270	Washer - Flat 1/2	2	
61	R453011	01-166-0100, 01-166-0120, 01-166-0270, 01-166-0500, 01-166-0600, 01-166-0620, 132-4593, 2356-3, 237-12, 24-10-AD, 24-11-AD, 24-11-BD, 24-12-AD, 24-12-BD, 30-9310, 32-8190, 3256-24, 3256-3, 3256-36, 3256-4, 453011, 47-9950, 48-9220, 513458, 7-0052	Washer - Flat 3/8 SAE Y/Zinc	4	

All original equipment manufacturers names and part numbers are used for identification purposes only, and we are in no way implying that our products are original equipment parts. Prices subject to change without notice.



## Replaces Toro Reelmaster 3105-D Parts

32in DPA Cutting Unit - Models 03191

Reel & Bedknife



Item No	R&R Part No.	OEM Part No.	Description	Qty Req	Order Quantity
61	R453009	01-166-0400, 24-10-BD, 24-9-AD, 32-9650, 3256-2, 3256-23, 3256-3, 3256-67, 3290-217, 3556-3, 4-2390, 7-0152	Washer - Flat 5/16 SAE	4	
64	R120-0404	120-0404	Bracket- High HOC - LH	1	
<i>Detail Description: Fits 2011 &amp; Newer:</i>					
65	R120-0405	120-0405	Bracket - High HOC - RH	1	
<i>Detail Description: Fits 2011 &amp; Newer:</i>					
66	R112-8979	112-8979	Tube - Support - 32 in Units	1	
67	R127-4284	127-4284	Washer - Special	2	
68	R115-3299	115-3299	Seal- Flocked	2	
69	R115-3296	115-3296	Bearing	2	
72	R125-1998	125-1998	Grass Shield - Rear	1	
73	R106-9623	106-9623	Bolt - Bedbar	2	
74	R106-9618	106-9618	Bushing - Rubber	2	
75	R119-4151	119-4151	Screw - Bedknife 5/16-18 x 17/32	12	
77	R32128-43	30-8990, 32128-43, 3290-357	Nut - Flanged Whiz - 3/8-16	6	

All original equipment manufacturers names and part numbers are used for identification purposes only, and we are in no way implying that our products are original equipment parts. Prices subject to change without notice.



## Replaces Toro Reelmaster 3105-D Parts

32in DPA Cutting Unit - Models 03191

Reel & Bedknife



Item No	R&R Part No.	OEM Part No.	Description	Qty Req	Order Quantity
77	R3296-39	32127-25, 32128-36, 3290-357, 3296-17, 3296-22, 3296-39, 915663P, 99-7443	Locknut - 3/8-16 Nylon	6	
78	R130-8094	130-8094	Washer	2	
79	R3234-11	3234-11	Bolt - Hex Washer HD	2	
82	R3230-26	3230-26	Screw - Carriage 5/16-18 x 3	4	
83	R106-3924	106-3924	Bracket - Rear Roller	2	
84	R104-8300	104-8300, 104-8300 , 119-4041	Locknut - 5/16-18 Flanged Y/Zinc	4	
85	R94-6936	94-6936, 94-9236	Washer - Hardened - 5/16 SAE	4	
86	R119-0626	119-0626	Shim - Roller - 1/4 in - Slotted	12	
87	R107-7400	107-7400	Pin - Lynch	1	
88	R93-6688	93-6688	Decal - Warning	1	
<i>Tech Note: Serial 401420001- 405170000:</i>					
88	R137-9706	137-9706	Decal- Warning	1	
<i>Tech Note: Serial 405170001- 407899999:</i>					
89	R110-4088-03	110-4088-03, 119-8010-03	Kickstand	1	

All original equipment manufacturers names and part numbers are used for identification purposes only, and we are in no way implying that our products are original equipment parts. Prices subject to change without notice.





## Replaces Toro Reelmaster 3105-D Parts

32in DPA Cutting Unit - Models 03191

Reel & Bedknife



Item No	R&R Part No.	OEM Part No.	Description	Qty Req	Order Quantity
93	R323-6	01-150-0010, 01-178-0608, 20-47-AD, 20-47-AGD, 3224-2, 323-6, 49-3510, 908034P, 908332	Bolt - Hex HD 3/8-16 x 1 GR5 YZ	2	
94	R107-7773	107-7773	Bolt - Soc HD Cap 5/16-18 x 2-1/2	1	
95	R3256-74	3256-74	Washer - Flat	1	
96	R322-14	01-150-0830, 01-178-0524, 30-8900, 322-14	Bolt - Hex HD 5/16-18 x 3 GR5	1	
97	R3234-7	3234-7	Bolt - Hex Washer HD 5/16-18 x 5/8	4	
98	R107-2979	107-2979	Bolt - Shoulder	6	
100	R101526	01-150-0970, 01-178-0620, 20-53-AGD, 321-11, 3224-8, 323-11, 323-12, 323-31, 323-4, 323-47	Bolt - Hex HD 3/8-16 x 2-1/2 GR5	2	
101	R151064	127-7118	Plug - Rubber - Fits R&R Reel Shaft Only	2	
102	R105-5700	105-5700, 115-5258	Wave Washer - Bearing	1	
103	R16-9759	16-9759	Link Assy	4	
104	R94-8945	94-8945	Bushing - Bronze - Link Bar	8	

All original equipment manufacturers names and part numbers are used for identification purposes only, and we are in no way implying that our products are original equipment parts. Prices subject to change without notice.



## Replaces Toro Reelmaster 3105-D Parts

32in DPA Cutting Unit - Models 03191

Reel & Bedknife



Item No	R&R Part No.	OEM Part No.	Description	Qty Req	Order Quantity
105	<b>R93-8806</b>	93-8806	Washer-Hardened	16	
106	<b>R93-6981</b>	93-6981	Spacer	8	
107	<b>R3231-40</b>	3231-40	Bolt - Carriage 3/8-16 x 2 1/4	8	
108	<b>R117-8177</b>	117-8177	O-Ring	2	

All original equipment manufacturers names and part numbers are used for identification purposes only, and we are in no way implying that our products are original equipment parts. Prices subject to change without notice.