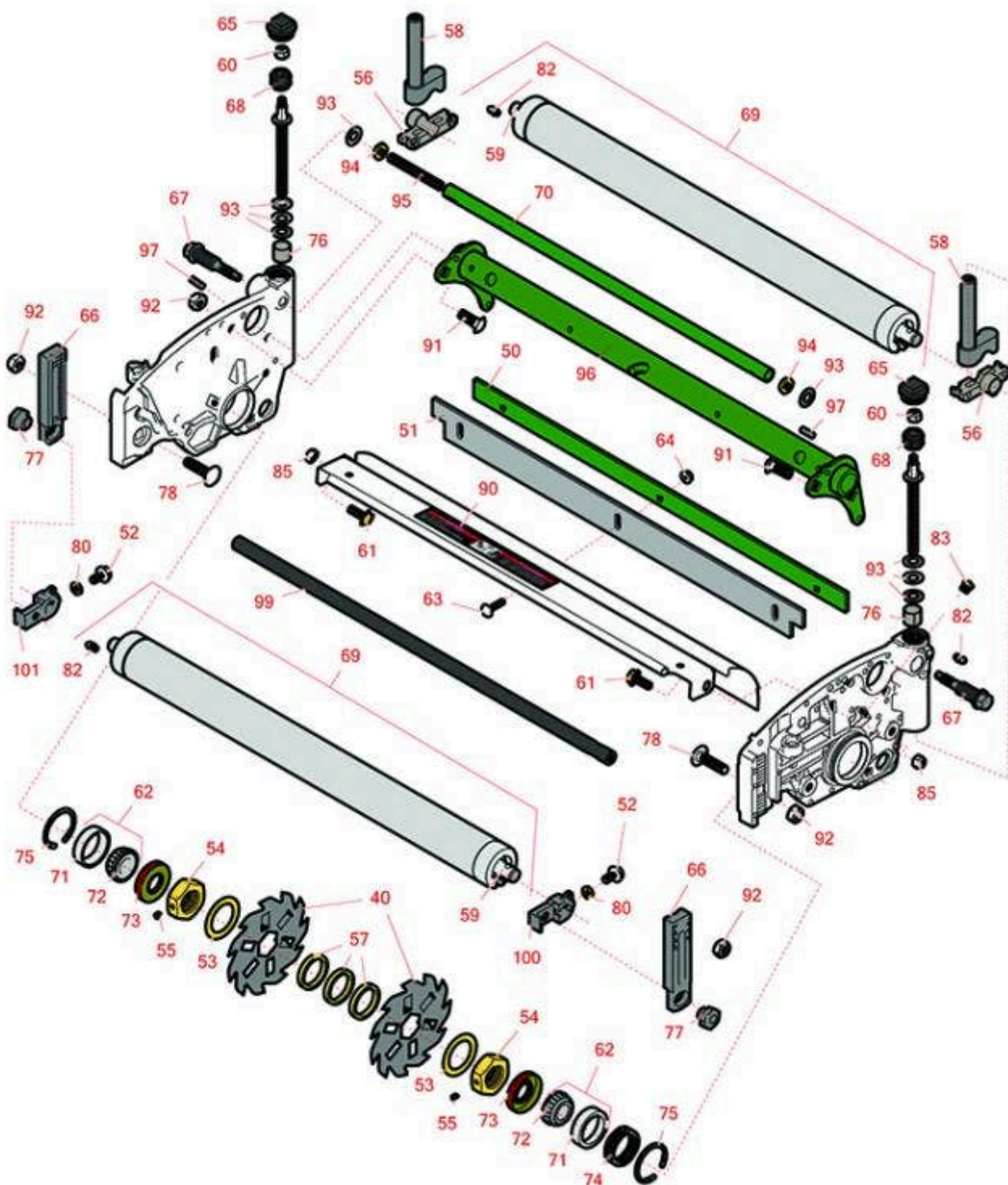




# Replaces John Deere 8500 Reel Mower Parts

*Verti-Cut Reel & Frame*



All original equipment manufacturers names and part numbers are used for identification purposes only, and we are in no way implying that our products are original equipment parts. Prices subject to change without notice.



# Replaces John Deere 8500 Reel Mower Parts

Verti-Cut Reel & Frame



Item No	R&R Part No.	OEM Part No.	Description	Qty Req	Order Quantity
---------	--------------	--------------	-------------	---------	----------------

## Blades

40	R150109C		Verti-Cut Blade - Carbide Tipped 1.2mm	27	
----	----------	--	---	----	--

*Detail Description: STRONG BY DESIGN. Each blade is made with the highest quality hand-picked steel, and laser-cut to our exacting specifications for superior toughness and wear.<BR><BR>TUNGSTEN CARBIDE TIPS. Protect blades from abrasion for extended life and maintain a consistent cutting depth. Optional cutting widths to meet local turf conditions.:*

40	R150209C	TCU26776	Verti-Cut Blade - Carbide Tipped 2mm	27	
----	----------	----------	---	----	--

*Detail Description: STRONG BY DESIGN. Each blade is made with the highest quality hand-picked steel, and laser-cut to our exacting specifications for superior toughness and wear.<BR><BR>TUNGSTEN CARBIDE TIPS. Protect blades from abrasion for extended life and maintain a consistent cutting depth. Optional cutting widths to meet local turf conditions.:*

## Other Parts Available

50	RAMT2704	AMT2704, MT169	Strap - Verticut Shield	1	
51	RET17914	ET17914	Rubber Isolator - Verticut	1	
52	R33114-016	19M7162	Bolt - Hx HD 8mm x 1.25 x 15	2	
53	R24H1513	24H1513	Washer	2	
54	RET17053	ET17053	Nut - 1-1/8-7 Jam Incl Set Screw	2	
55	R3245-35	22H841	Screw - Set 1/4-28 x 1/4	2	
56	RTC28987	TCU25228, TCU28987	Half Clamp - Roller Bkt	2	
57	RET17713	ET17713	Spacer - Vertical Mower Shaft	79	
58	RAUC13598	AUC13598, TCA19369	Adjuster	2	
59	RAA35741	AA35741, AET10129, TCA22836	Bearing	4	

All original equipment manufacturers names and part numbers are used for identification purposes only, and we are in no way implying that our products are original equipment parts. Prices subject to change without notice.



# Replaces John Deere 8500 Reel Mower Parts

Verti-Cut Reel & Frame



Item No	R&R Part No.	OEM Part No.	Description	Qty Req	Order Quantity
<i>Detail Description: 1/4" Side Hole:</i>					
60	<b>RM148268</b>	M148268	Lock Nut	2	
61	<b>R19M7866</b>	19M7866	Bolt - Flanged Hex M8-1.25 x 20	2	
62	<b>R500534</b>		Bearing - with Cup	2	
<i>Detail Description: Kit includes: 1 ea R254-78- Bearing Cone &amp; R254-79 Bearing Cone:</i>					
63	<b>R03M7232</b>	03M7232	Bolt - Carriage M6-1.0 x 25	3	
64	<b>R14M7303</b>	14M7303	Nut - 6mm x 1.0 Flanged	3	
65	<b>RUC16102</b>	TCU24949, UC16102	Cap	2	
66	<b>RUC16108</b>	TCU24460, UC16108	Bracket	2	
67	<b>RTC26458</b>	TCU26458	Worm Gear	2	
68	<b>RTC40491</b>	TCU24683, TCU40491	Worm Gear	2	
69	<b>RBM18480</b>	BM18480	Roller Assy - Solid 2"	2	
70	<b>RTC26729</b>	TCU26729	Tube	1	
71	<b>R254-79</b>	JD8226	Cup - Bearing	2	
<i>Detail Description: Use R254-79M installation mandrel to properly install race.:</i>					
72	<b>R254-78</b>	JD8188	Tapered Bearing Cone	2	
73	<b>RET14566</b>	ET14566	Seal - Reel	2	
74	<b>RTC23880</b>	TCU23880, TCU28964	Compression Spring - Reel Bearing	1	
75	<b>R40M7226</b>	40M1862, 40M7226	Ring - Retaining	2	

All original equipment manufacturers names and part numbers are used for identification purposes only, and we are in no way implying that our products are original equipment parts. Prices subject to change without notice.



# Replaces John Deere 8500 Reel Mower Parts

*Verti-Cut Reel & Frame*



Item No	R&R Part No.	OEM Part No.	Description	Qty Req	Order Quantity
76	<b>RMT74</b>	MT74	Bushing - Roller Bkt	2	
77	<b>RTC28635</b>	TCU24555, TCU28635	Eccentric	2	
78	<b>R03M7194</b>	03M7194	Bolt	2	
80	<b>R14M7151</b>	14M7151	Nut - Jam Roller Adj	2	
82	<b>R302-5</b>	JD7797, JD7842, JD7844	Fitting - Grease	2	
83	<b>R170714</b>	E14814	Fitting - Pressure Relief	2	
85	<b>RH137328</b>	H137328	Locknut	2	
90	<b>RMT6517</b>	MT6517	Label - Warning	1	
91	<b>R03M7191</b>	03M7191	Bolt - Carriage M10 x 25	4	
92	<b>R14M7517</b>	14M7517	Locknut - 10mm x 1.5 ESNA	4	
93	<b>RET16679</b>	ET16679	Washer - Spring	8	
94	<b>R14M7152</b>	14M7152	Nut - 10mm x 1.5 Jam	2	
95	<b>RTC25398</b>	TCU25398	Compression Spring	1	
96	<b>RAUC13891</b>	AUC13891, TCA18291	Frame	1	
97	<b>RR30587</b>	30587, R30587	Pin - Dowell 1/4 Dia. x .75	2	
99	<b>RUC13425</b>	UC13425	Rod - Hardened	1	
99	<b>RTC26727</b>	TCU26727	Rod	1	
100	<b>RUC18211</b>	TCU24461, UC18211	Bracket - LH	1	

All original equipment manufacturers names and part numbers are used for identification purposes only, and we are in no way implying that our products are original equipment parts. Prices subject to change without notice.



# Replaces John Deere 8500 Reel Mower Parts

*Verti-Cut Reel & Frame*



Item No	R&R Part No.	OEM Part No.	Description	Qty Req	Order Quantity
101	RUC16109	TCU24461, UC16109	Bracket - RH	1	

All original equipment manufacturers names and part numbers are used for identification purposes only, and we are in no way implying that our products are original equipment parts. Prices subject to change without notice.