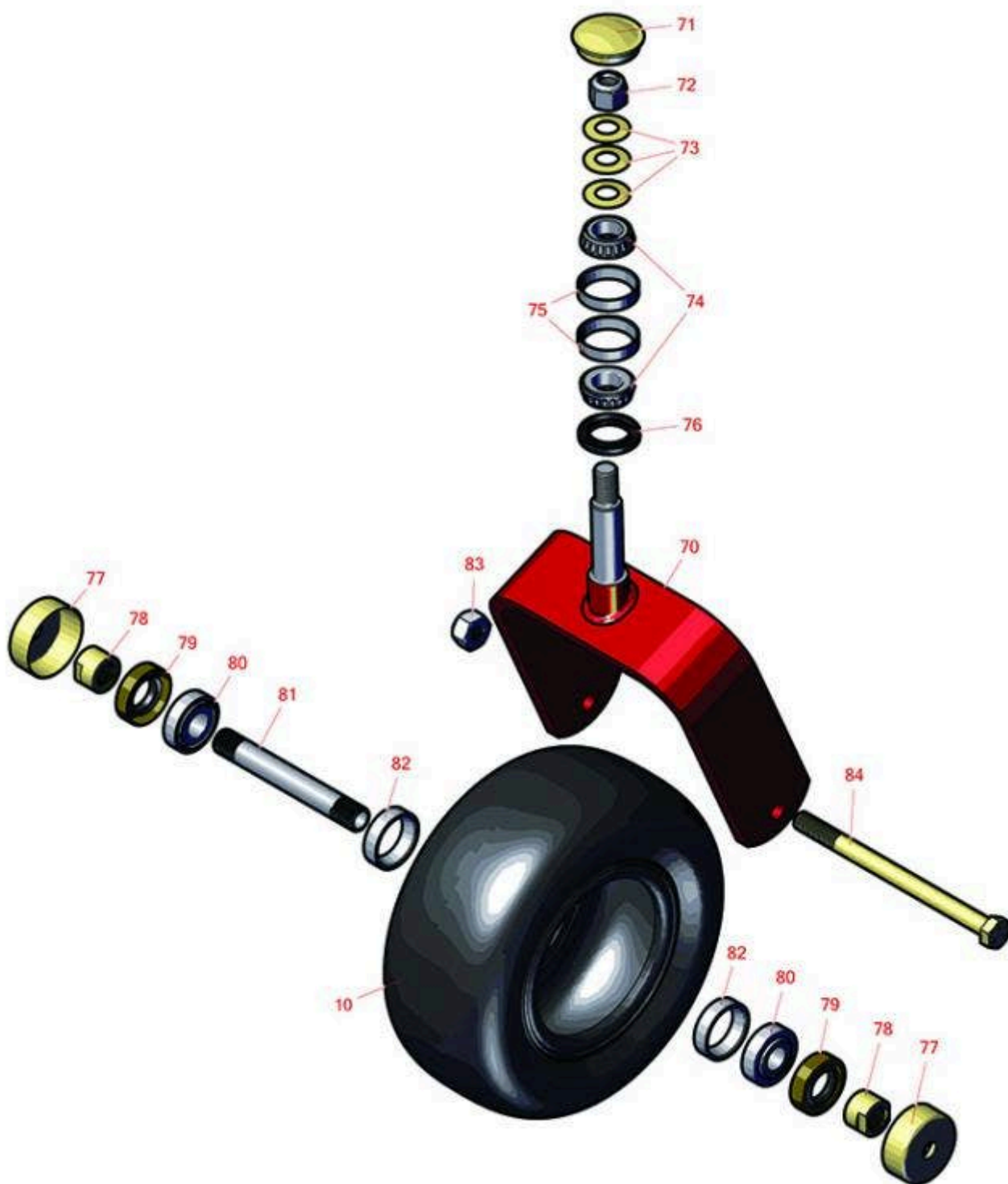




## Replaces Toro Z500 Z Master Parts

60in TURBO FORCE Side Discharge Mower  
Caster Wheel



All original equipment manufacturers names and part numbers are used for identification purposes only, and we are in no way implying that our products are original equipment parts. Prices subject to change without notice.



# Replaces Toro Z500 Z Master Parts

60in TURBO FORCE Side Discharge Mower

Caster Wheel



Item No	R&R Part No.	OEM Part No.	Description	Qty Req	Order Quantity
<b>Wheels</b>					
10	<b>RCT5121861</b>	1-523009, 126-5959	Tire - 13x6.50-6 Nhs (4 Ply) Carlisle Smooth	2	
<b>Other Parts Available</b>					
70	<b>R116-8888</b>	103-1474-01, 116-6707-01, 116-8888	Fork - Caster 7.875 in Inside	2	
71	<b>R103-4882</b>	103-4882	Grease Cap - Castor	2	
72	<b>R3296-51</b>	3296-51, 3296-81	Nut - Nylon Lock 3/4-10 Gr 8	2	
73	<b>R1-633508</b>	1-633508	Washer - Spring Disc	6	
74	<b>R254-94</b>	1-543509, 254-94, 32-8090, 32-8240, 32-9640, 40440, 62-3330	Tapered Bearing Cone	4	
75	<b>R254-72</b>	01-103-0050, 01-103-0120, 01-103-0140, 1-543508, 254-71, 254-72, 40439, 62-3340, 99-4511	Cup - Bearing	4	
76	<b>R1-543511</b>	1-543511	Seal- Grease	2	
77	<b>R103-2768</b>	103-2768	Guard - Seal	4	
78	<b>R103-3051</b>	103-3051	Spacer - Nut - Hardened	4	
79	<b>R103-0063</b>	103-0063	Seal - Grease	4	
80	<b>R500534</b>	1-633585	Bearing - with Cup	4	

All original equipment manufacturers names and part numbers are used for identification purposes only, and we are in no way implying that our products are original equipment parts. Prices subject to change without notice.



## Replaces Toro Z500 Z Master Parts

60in TURBO FORCE Side Discharge Mower

Caster Wheel



Item R&R

No Part No.

OEM

Part No.

Description

Qty  
Req

Order  
Quantity

*Detail Description: Kit includes: 1 ea R254-78- Bearing Cone & R254-79 Bearing Cone:*

81	<b>R103-5156</b>	103-5156	Axle- Caster	2
82	<b>R254-79</b>	01-103-0060, 01-103-0130, 1-633584, 252-106, 254-79, 32-7800, 32-9590	Cup - Bearing	4
<i>Detail Description: Use R254-79M installation mandrel to properly install race.:</i>				
83	<b>RF5003</b>	32127-29, 32131-5, 32132-5, 3296-23	Locknut - ESNA 1/2-13	2
84	<b>R325-39</b>	325-39	Bolt - Hx HD 1/2-13 x 9 1/2	2

All original equipment manufacturers names and part numbers are used for identification purposes only, and we are in no way implying that our products are original equipment parts. Prices subject to change without notice.