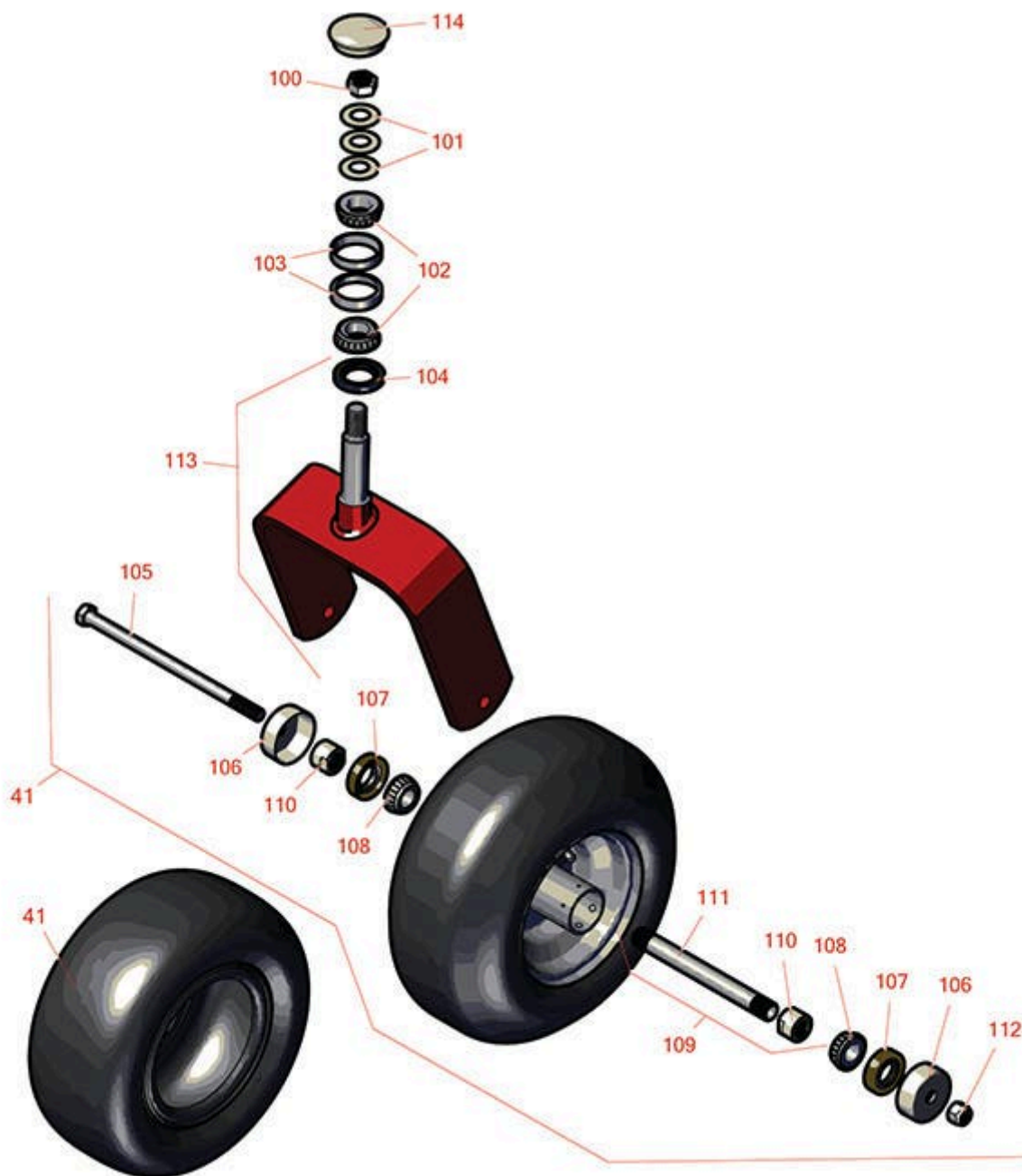




Replaces Toro Z Master 2000 Parts

Zero Turn Mower with 52in Deck - Model 74143

Caster Wheel



All original equipment manufacturers names and part numbers are used for identification purposes only, and we are in no way implying that our products are original equipment parts. Prices subject to change without notice.



Replaces Toro Z Master 2000 Parts

Zero Turn Mower with 52in Deck - Model 74143

Caster Wheel



Item No	R&R Part No.	OEM Part No.	Description	Qty Req	Order Quantity
---------	--------------	--------------	-------------	---------	----------------

Tires & Wheels

0	TIRES		Click Here to View Complete Tire Selection	0	
41	RCT5121861	1-523009, 126-5959	Tire - 13x6.50-6 Nhs (4 Ply) Carlisle Smooth	2	
42	R117-0361	117-0361	Tire & Wheel - 13x6.50-6 Pneumatic	2	
42	R127-9540	127-9540	Tire & Wheel - 13x6.50-6 Pneumatic	2	

Optional Michelin Tweel Tires

30	RTMT41011	109-9127, 126-7592, 126-7753, 127-9526, 127-9528, 127-9540, 139-3604, 139-3639, 140-4896	Michelin X Tweel Turf Caster Smooth - 13x6.5N6 (5/8in Mount) 290 lb Max Load	2	
----	------------------	--	--	---	--

Detail Description: Michelin X Tweel Turf casters replace the existing front casters on zero turn radius mowers, and completely eliminate the risk of flat tires. They have a consistent hub height which helps ensure the mower deck produces an even cut, while the poly-resin spokes help dampen the ride for enhanced operator comfort, even when navigating over curbs and other bumps. They are designed to provide a long wear life.:

30	RTMT73818	109-9127, 126-7592, 126-7753, 127-9526, 127-9528, 127-9540, 139-3604, 140-4896	Michelin X Tweel Turf Caster Grooved - 13x6.5N6 (5/8in Mount) 290 lb Max Load	2	
----	------------------	---	---	---	--

Detail Description: Michelin X Tweel Turf casters replace the existing front casters on zero turn radius mowers, and completely eliminate the risk of flat tires. They have a consistent hub height which helps ensure the mower deck produces an even cut, while the poly-resin spokes help dampen the ride for enhanced operator comfort, even when navigating over curbs and other bumps. They are designed to provide a long wear life.:

All original equipment manufacturers names and part numbers are used for identification purposes only, and we are in no way implying that our products are original equipment parts. Prices subject to change without notice.



Replaces Toro Z Master 2000 Parts

Zero Turn Mower with 52in Deck - Model 74143

Caster Wheel



Item No	R&R Part No.	OEM Part No.	Description	Qty Req	Order Quantity
31	RTMT40653		Michelin Spacer - 1/2in ID x 1in OD	4	
Other Parts Available					
100	R3296-51	3296-51, 3296-81	Nut - Nylon Lock 3/4-10 Gr 8	2	
101	R1-633508	1-633508	Washer - Spring Disc	6	
102	R254-94	1-543509, 254-94, 32-8090, 32-8240, 32-9640, 40440, 62-3330	Tapered Bearing Cone	4	
103	R254-72	01-103-0050, 01-103-0120, 01-103-0140, 1-543508, 254-71, 254-72, 40439, 62-3340, 99-4511	Cup - Bearing	4	
104	R116-5647	116-5647	Seal - Grease	4	
105	R325-37	325-36, 325-37	Bolt - Hex Head 1/2-13 x 7 Grade 5	2	
106	R103-2768	103-2768	Guard - Seal	4	
107	R103-0063	103-0063	Seal - Grease	4	
108	R254-78	01-102-0060, 01-102-0130, 1-633585, 254-78, 32-7790, 32-9580, 93-4813	Tapered Bearing Cone	4	
109	R126-5360	126-5360	Axle- Caster w/Spacer Nut	2	

All original equipment manufacturers names and part numbers are used for identification purposes only, and we are in no way implying that our products are original equipment parts. Prices subject to change without notice.



Replaces Toro Z Master 2000 Parts

Zero Turn Mower with 52in Deck - Model 74143

Caster Wheel



Item No	R&R Part No.	OEM Part No.	Description	Qty Req	Order Quantity
110	R103-3051	103-3051	Spacer - Nut - Hardened	4	
111	R103-3155	103-3155	Axle - Caster	2	
111	R103-5156	103-5156	Axle- Caster	1	
112	RF5003	32127-29, 32131-5, 32132-5, 3296-23	Locknut - ESNA 1/2-13	2	
113	R116-8883	1-632511-01	Caster Fork Assy Incl Seal 6.25 in Inside	1	
114	R103-4882	103-4882	Grease Cap - Castor	1	
115	R116-8888	103-1474-01, 116-6707-01, 116-8888	Fork - Caster 7.875 in Inside	1	

All original equipment manufacturers names and part numbers are used for identification purposes only, and we are in no way implying that our products are original equipment parts. Prices subject to change without notice.