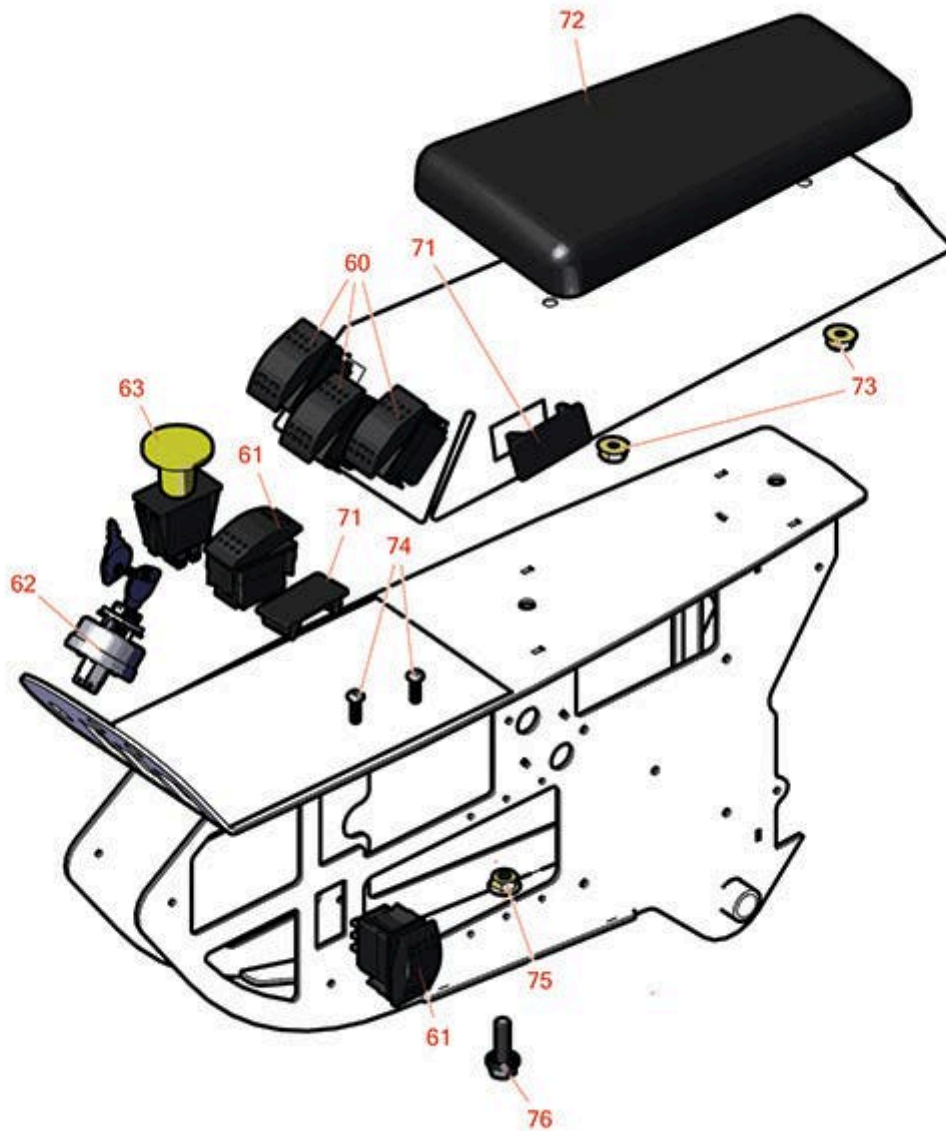




Replaces Toro Groundsmaster 4700-D Parts

*Traction Unit - Model 30899
Console & Control Arm*



All original equipment manufacturers names and part numbers are used for identification purposes only, and we are in no way implying that our products are original equipment parts. Prices subject to change without notice.



Replaces Toro Groundsmaster 4700-D Parts

*Traction Unit - Model 30899
Console & Control Arm*



Item No	R&R Part No.	OEM Part No.	Description	Qty Req	Order Quantity
---------	--------------	--------------	-------------	---------	----------------

Gauges and Controls

60	R100-1535	100-1535, 100-8492	Switch	3	
61	R95-8999	95-8999	Switch - Headlight	2	
62	R151386	106-5269, 121-5159	Ignition Switch Assy	1	
63	R93-9999	93-9999	Switch - Pto	1	

Other Parts Available

71	R99-7420	100-8493, 99-7420	Plug-Hole	2	
72	R108-7602	108-7602	Arm Rest	1	
73	R104-8300	104-8300, 104-8300 , 119-4041	Locknut - 5/16-18 Flanged Y/Zinc	2	
74	R3290-134	3290-134	Screw - 10-24x5/8 Hh Ms	2	
75	R104-8301	104-8301, 104-9301, 109-6658, 133-7570	Locknut - 3/8-16 Nylon Flanged	2	
76	R3234-42	3234-42	Bolt - 3/8-16 x 1 Hx HD Fl	2	

All original equipment manufacturers names and part numbers are used for identification purposes only, and we are in no way implying that our products are original equipment parts. Prices subject to change without notice.