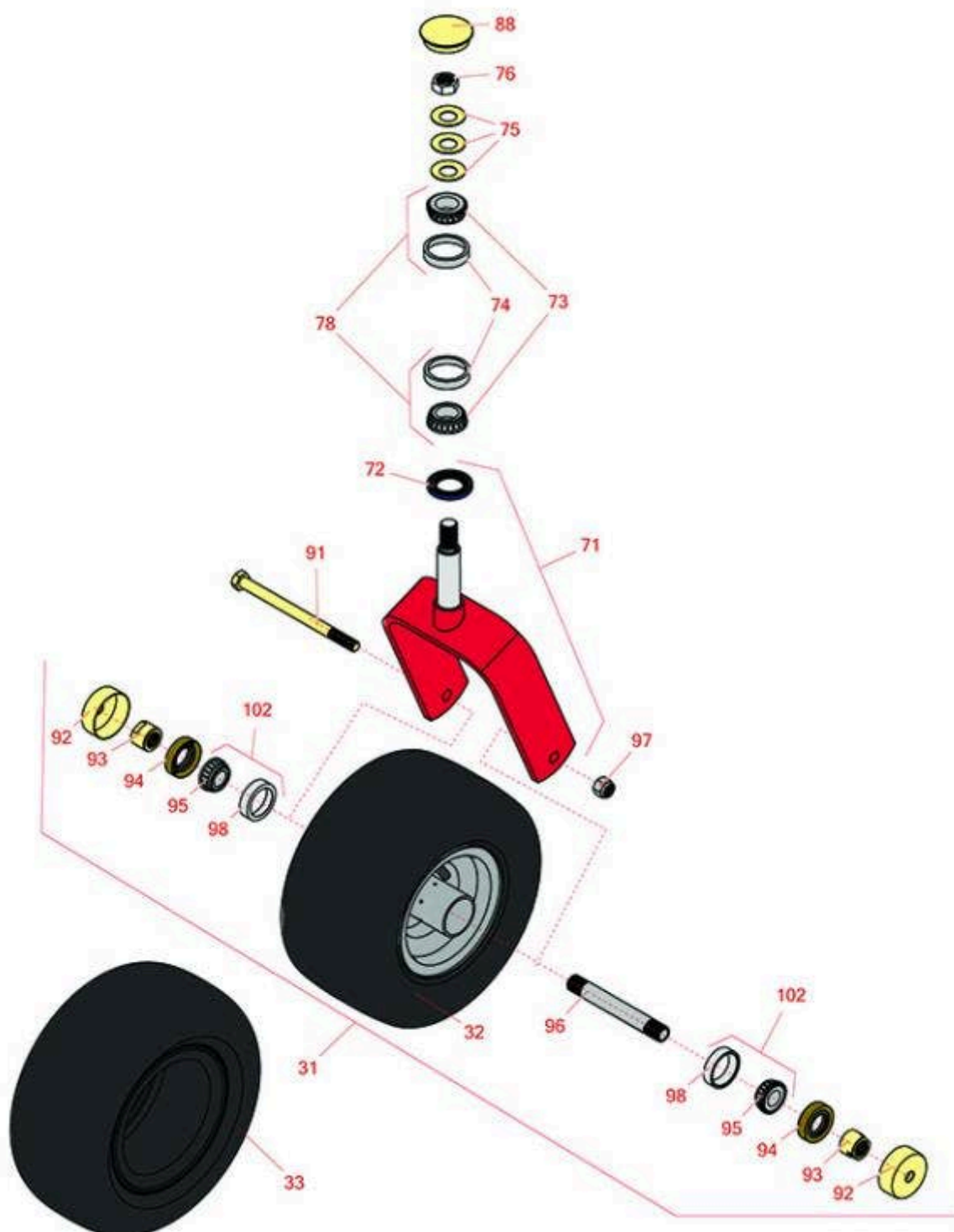




# Replaces Exmark Lazer Z AS-Series Parts

Zero-Turn Mower - Models LAS28KA524, LAS28KA524R  
Caster Wheel



All original equipment manufacturers names and part numbers are used for identification purposes only, and we are in no way implying that our products are original equipment parts. Prices subject to change without notice.



# Replaces Exmark Lazer Z AS-Series Parts

Zero-Turn Mower - Models LAS28KA524, LAS28KA524R  
Caster Wheel



Item No	R&R Part No.	OEM Part No.	Description	Qty Req	Order Quantity
<b>Tires</b>					
31	<b>R103-5189</b>	103-3785, 103-5189	Tire & Wheel - 13x5.00-6 Smooth Pneumatic 4 Ply	2	
32	<b>RCT5120211</b>	1-633002	Tire - 13x5.00-6 Nhs (4 Ply) Carlisle Smooth	2	
33	<b>RCT5121861</b>	1-523009, 125-5581, 126-5959	Tire - 13x6.50-6 Nhs (4 Ply) Carlisle Smooth	2	
<b>Other Parts Available</b>					
71	<b>R116-8883</b>	1-632511-01	Caster Fork Assy Incl Seal 6.25 in Inside	2	
71	<b>R1-632511-01</b>	1-632511-01	Caster Fork Assy Incl Seal 6.25 in Inside	0	
71	<b>R116-8888</b>	103-1474-01, 116--6707-01, 116-6707-01	Fork - Caster 7.875 in Inside	2	
72	<b>R1-543511</b>	1-543511, R & R ONLY	Seal- Grease	2	
72	<b>R116-5647</b>	116-5647, R & R ONLY	Seal - Grease	2	
73	<b>R254-94</b>	1-543509	Tapered Bearing Cone	4	
74	<b>R254-72</b>	1-543508	Cup - Bearing	4	
75	<b>R1-633508</b>	1-633508	Washer - Spring Disc	6	
76	<b>R3296-51</b>	3296-51	Nut - Nylon Lock 3/4-10 Gr 8	2	
78	<b>R500596</b>	R & R ONLY	Tapered Bearing Set - Cup and Cone	4	
88	<b>R103-4882</b>	103-4882	Grease Cap - Castor	2	
91	<b>R325-37</b>	325-36, 325-37	Bolt - Hex Head 1/2-13 x 7 Grade 5	2	
91	<b>R325-39</b>	325-39	Bolt - Hx HD 1/2-13 x 9 1/2	2	

All original equipment manufacturers names and part numbers are used for identification purposes only, and we are in no way implying that our products are original equipment parts. Prices subject to change without notice.



## Replaces Exmark Lazer Z AS-Series Parts

Zero-Turn Mower - Models LAS28KA524, LAS28KA524R  
Caster Wheel



Item No	R&R Part No.	OEM Part No.	Description	Qty Req	Order Quantity
92	<b>R103-2768</b>	103-2768	Guard - Seal	4	
93	<b>R103-3051</b>	103-3051	Spacer - Nut - Hardened	4	
94	<b>R103-0063</b>	103-0063	Seal - Grease	4	
95	<b>R254-78</b>	1-633585	Tapered Bearing Cone	4	
96	<b>R103-3155</b>	103-3155	Axle - Caster	2	
97	<b>RF5003</b>	3296-23	Locknut - ESNA 1/2-13	2	
98	<b>R254-79</b>	1-633584, R & R ONLY	Cup - Bearing	4	
<i>Detail Description: Use R254-79M installation mandrel to properly install race.:</i>					
102	<b>R500534</b>	1-633585, R & R ONLY	Bearing - with Cup	4	

*Detail Description: Kit includes: 1 ea R254-78- Bearing Cone & R254-79 Bearing Cone:*

All original equipment manufacturers names and part numbers are used for identification purposes only, and we are in no way implying that our products are original equipment parts. Prices subject to change without notice.