

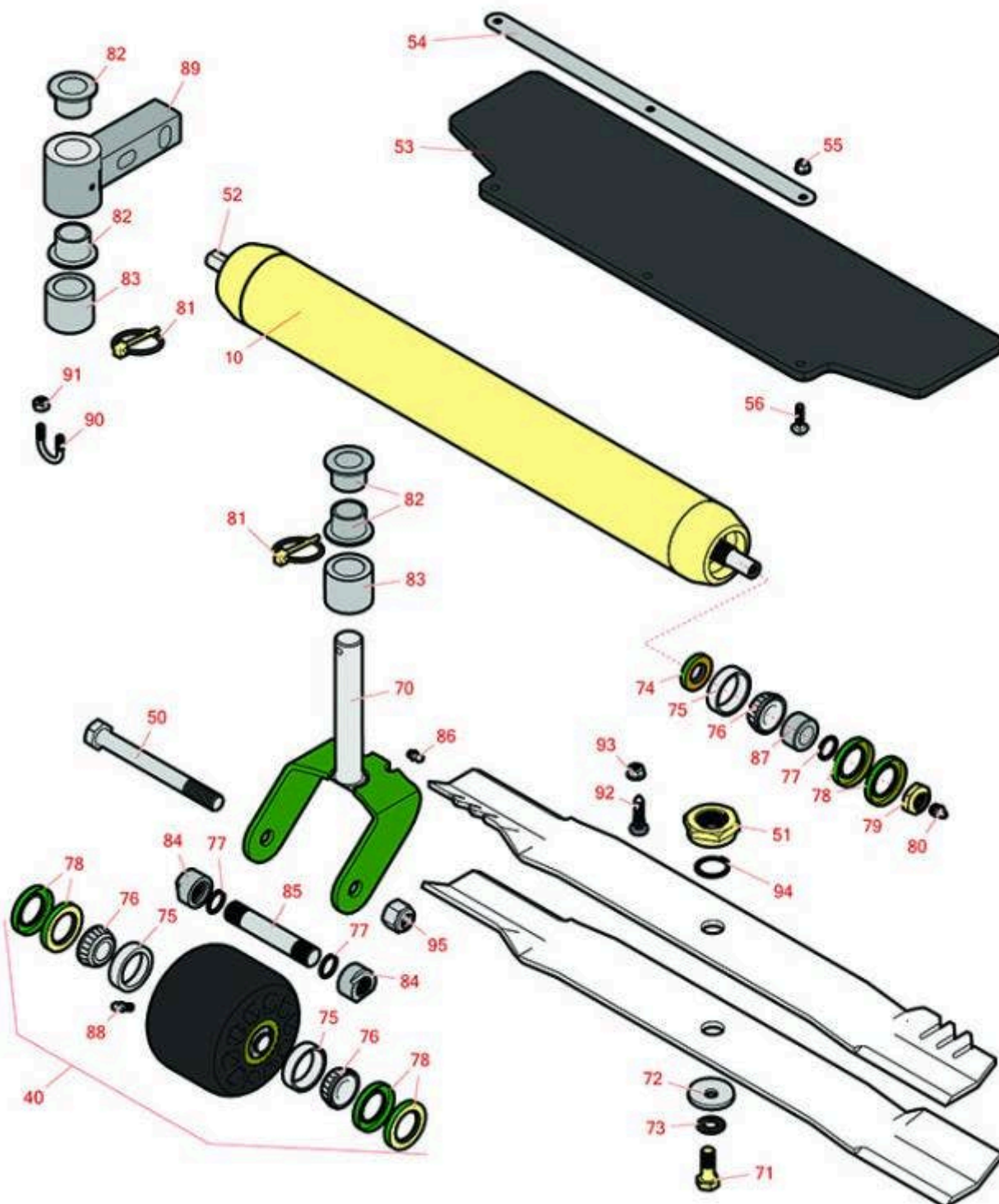


Replaces John Deere 7400 Rotary

Mower Parts

Rotary Cutting Unit

Rotary Cutting Unit



All original equipment manufacturers names and part numbers are used for identification purposes only, and we are in no way implying that our products are original equipment parts. Prices subject to change without notice.



Replaces John Deere 7400 Rotary

Mower Parts

Rotary Cutting Unit

Rotary Cutting Unit



Item No	R&R Part No.	OEM Part No.	Description	Qty Req	Order Quantity
---------	--------------	--------------	-------------	---------	----------------

Roller

10	RTCA17790	TCA17790	Roller - Smooth 76 mm (3 in)	3	
----	------------------	----------	------------------------------	---	--

Wheels

40	RTCA19047	TCA19047	Caster Wheel Assy	6	
----	------------------	----------	-------------------	---	--

Other Parts Available

50	R327-17	19H3185	Axle - Caster Fork 5/8-11 x 6	6	
51	RTC27862	TCU27862	Nut - Spindle	3	
52	RTC23559	TCU23559	Shaft - Roller - 28 in	3	
53	R500615	TCU23571	Rubber Guard	3	
54	RTC23572	TCU23572	Strip - Retaining	3	
55	R14M7397	14M7397, 14M7463	Locknut - 6mm x 1.0 ESNA Flanged	9	
56	R03M7232	03M7232	Bolt - Carriage M6-1.0 x 25	9	
70	RTCA17787	TCA17787	Caster Fork Assy	6	
71	RTC28104	TCU28104	Bolt - Blade 10.9 Hardness	3	
72	RM147138	M147138	Washer - Belville	3	
73	RTC27937	TCU27937	Washer - Anti Friction	3	
74	RET15756	ET15756, MT1739, MT739	Seal	12	
75	R254-79	JD8226	Cup - Bearing	12	
<i>Detail Description: Use R254-79M installation mandrel to properly install race.:</i>					
76	R254-78	JD8188	Tapered Bearing Cone	12	

All original equipment manufacturers names and part numbers are used for identification purposes only, and we are in no way implying that our products are original equipment parts. Prices subject to change without notice.



Replaces John Deere 7400 Rotary

Mower Parts

Rotary Cutting Unit

Rotary Cutting Unit



Item No	R&R Part No.	OEM Part No.	Description	Qty Req	Order Quantity
77	R237-54	U46731, U6731	O-Ring - Small	12	
78	RET15755	ET15755	Seal - Oil	12	
79	R3296-15	N101345	Locknut - 3/4-16 Nylon Jam	6	
80	R471219	471219, 471231, JD7759, JD7798	Zerk - Grease	5	
81	RM115827	M115827	Pin - Quick Lock	6	
82	RM83541	M83541	Bushing - Flanged - 1 in ID	24	
83	RTC24952	TCU24952	Spacer	6	
84	RTC26091	TCU26091	Spacer	12	
85	RTC26006	TCU26006	Axle - (A)	6	
86	R302-5	JD7797, JD7842, JD7844	Fitting - Grease	6	
87	RET15726	ET15726, RET15726	Sleeve - Wear Hardened	6	
88	R471217	JD7803	Fitting - Grease	6	
89	RTC25028	TCU25028	Pivot	6	
90	RB10937	B10937	U - Bolt 1/4-20	6	
91	R301504	M40333	Locknut - ESNA 1/4-20	12	
92	R19M7868	19M7868	Bolt - M8-1.25 x 30 HHF	12	
93	R14M7298	14M7298	Nut - 8mm x 1.25 Flanged	12	
94	R32120-2	M42702	Ring - Retaining	3	

All original equipment manufacturers names and part numbers are used for identification purposes only, and we are in no way implying that our products are original equipment parts. Prices subject to change without notice.



Replaces John Deere 7400 Rotary Mower Parts

Rotary Cutting Unit
Rotary Cutting Unit



Item No	R&R Part No.	OEM Part No.	Description	Qty Req	Order Quantity
95	R3296-53	U44915	Locknut - 5/8-11 ESNA Yellow	6	

All original equipment manufacturers names and part numbers are used for identification purposes only, and we are in no way implying that our products are original equipment parts. Prices subject to change without notice.