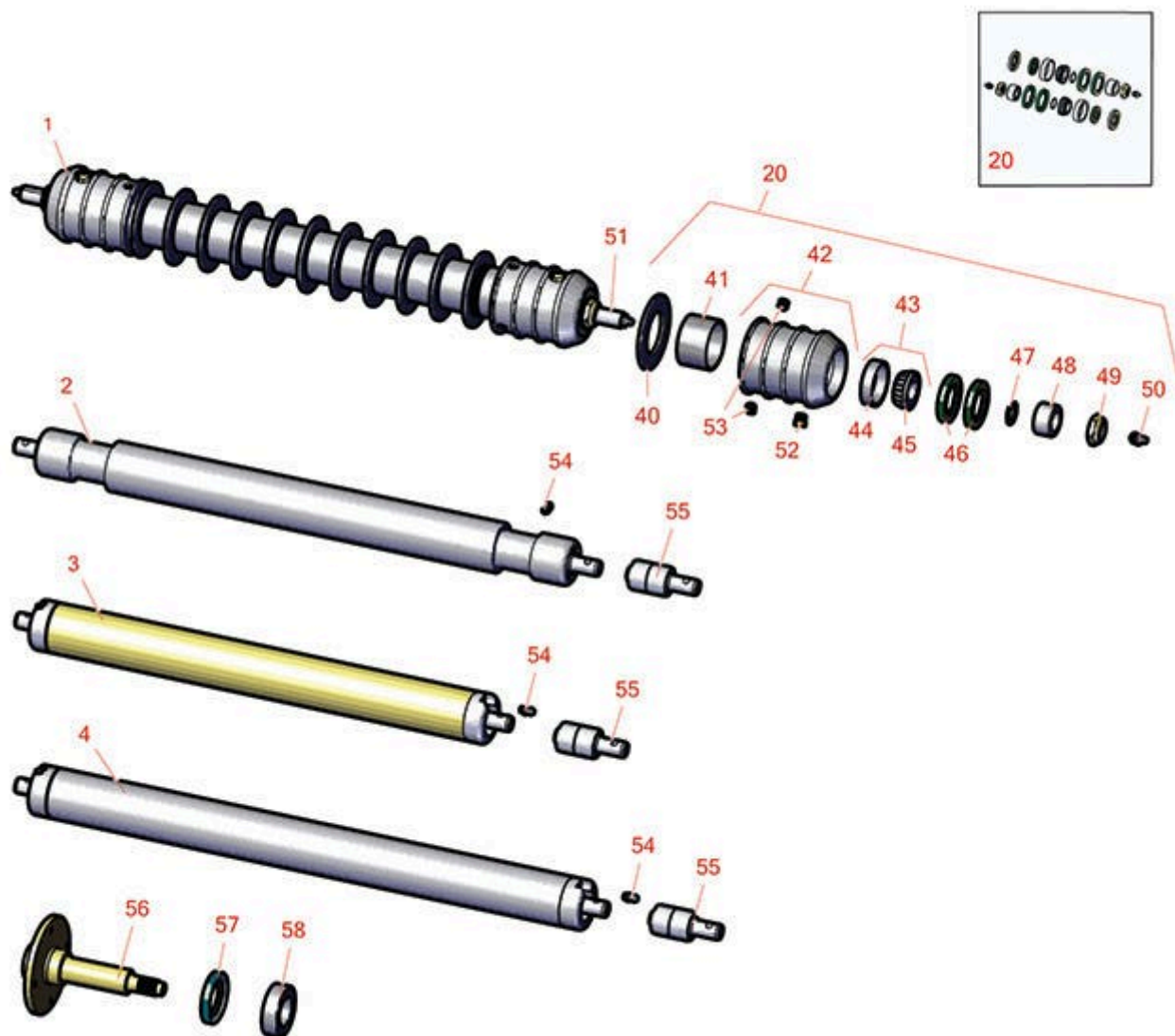




# Replaces John Deere 220SL Walking Greens Mower Parts

Cutting Unit  
Rollers



All original equipment manufacturers names and part numbers are used for identification purposes only, and we are in no way implying that our products are original equipment parts. Prices subject to change without notice.



# Replaces John Deere 220SL Walking Greens Mower Parts

Cutting Unit  
Rollers



Item No	R&R Part No.	OEM Part No.	Description	Qty Req	Order Quantity
---------	--------------	--------------	-------------	---------	----------------

## R&R Rollers

1	R500512	AMT2966, BM25317	Roller - Grooved Repairable Steel	1	
<i>Detail Description: Constructed with a through shaft and greasable ball bearings. This roller can be repaired by unscrewing the ends and replacing the series of washers and spacers.:</i>					
2	RBUC10786	BUC10786	Roller - Solid 2" x 22 1/2"	1	
3	RTCA19656	BM24203, BM24204, TCA19656	Roller - Smooth Tubular Steel	1	
4	RBM18480	BM18480	Roller Assy - Solid 2"	1	

## Overhaul Kits

20	RAET10632	AET10632	Overhaul Kit - Roller	1	
<i>Detail Description: Includes 4 ea: RET15755 Seal; 2 ea: R237-54 O-Ring, R253-122 Seal, R254-78 Bearing, R254-79 Cup, R3296-15 Locknut, R471219 Grease Zerk, RET15726 Sleeve, RET15756 Seal:</i>					

## Other Parts Available

40	R150673		Washer - 3 Repairable Roller	11	
41	R150676		Spacer - 2-3/4 Dia x 1-1/4 L	10	
42	R500511		Roller End - Threaded 3	2	
43	R500534		Bearing - with Cup	2	
<i>Detail Description: Kit includes: 1 ea R254-78- Bearing Cone &amp; R254-79 Bearing Cone:</i>					
44	R254-78	JD8188	Tapered Bearing Cone	2	
45	R254-79	JD8226	Cup - Bearing	2	
<i>Detail Description: Use R254-79M installation mandrel to properly install race.:</i>					
46	RET15755	ET15755	Seal - Oil	2	

All original equipment manufacturers names and part numbers are used for identification purposes only, and we are in no way implying that our products are original equipment parts. Prices subject to change without notice.



# Replaces John Deere 220SL Walking Greens Mower Parts

Cutting Unit  
Rollers



Item No	R&R Part No.	OEM Part No.	Description	Qty Req	Order Quantity
47	R237-54	U46731, U6731	O-Ring - Small	2	
48	RET15726	ET15726, RET15726	Sleeve - Wear Hardened	2	
49	R3296-15	N101345	Locknut - 3/4-16 Nylon Jam	2	
50	R471219	471219, 471231, JD7759, JD7798	Zerk - Grease	2	
51	RET17515	ET17515	Shaft - Roller	1	
52	R170714	E14814	Fitting - Pressure Relief	2	
53	R150691		Screw - Set Nyloc 3/8-16 x 3/8	4	
54	R302-5	JD7797, JD7842, JD7844	Fitting - Grease	2	
55	RAA35741	AA35741, AET10129, TCA22836	Bearing	2	
<i>Detail Description: 1/4" Side Hole:</i>					
56	RET11081	ET11081	Spindle - Traction Roller	1	
57	RET10285	ET10285	Seal	2	
58	R345050	AZ20217	Bearing	2	

All original equipment manufacturers names and part numbers are used for identification purposes only, and we are in no way implying that our products are original equipment parts. Prices subject to change without notice.